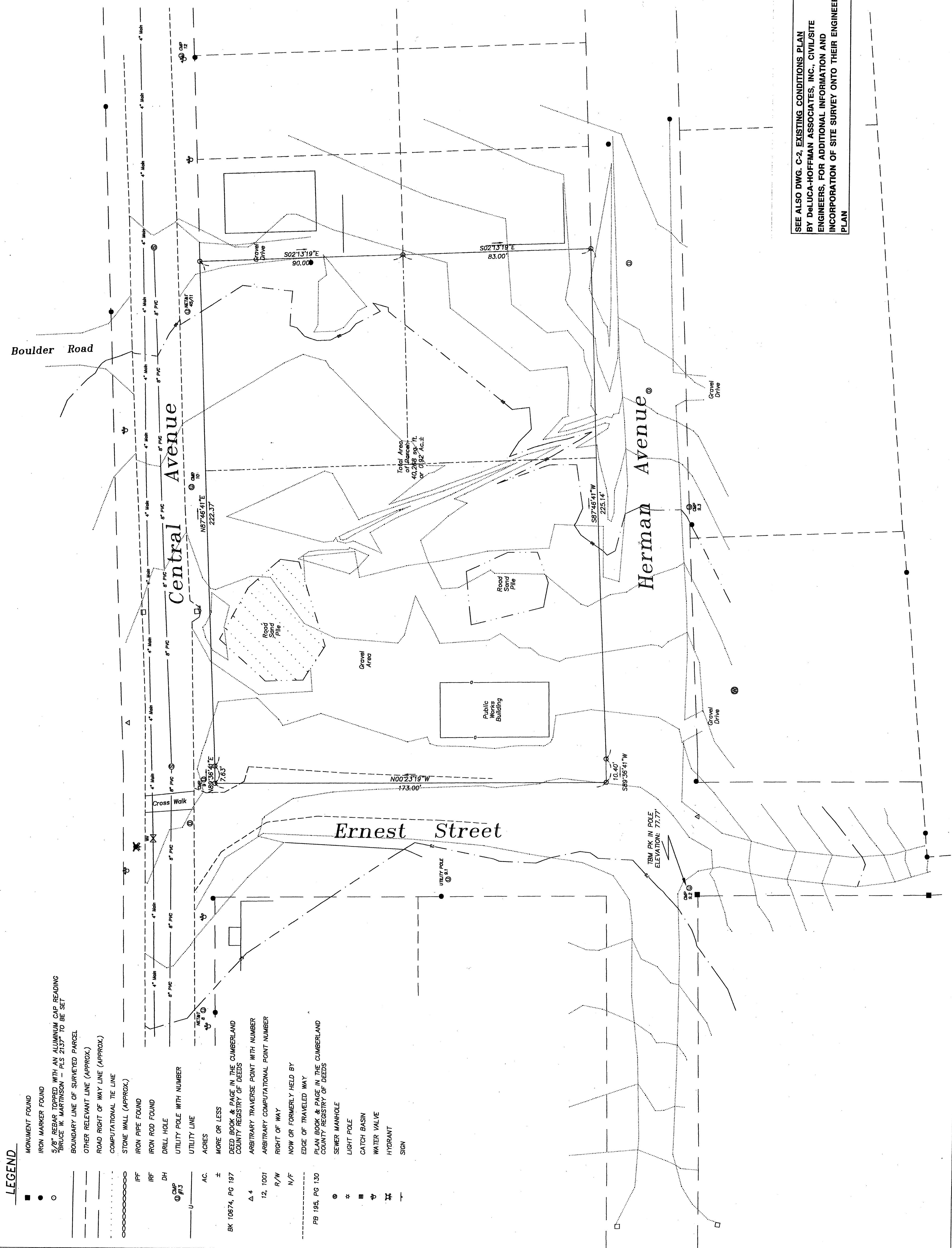


N
MAGNETIC
SEE NOTE 5



- LEGEND**
- MONUMENT FOUND
 - IRON MARKER FOUND
 - 5/8" REBAR TOPPED WITH AN ALUMINUM CHIP BEARING BRUCE W. MARTINSON - PLS 2137" TO BE SET
 - BOUNDARY LINE OF SURVEYED PARCEL
 - OTHER RELEVANT LINE (APPROX.)
 - ROAD RIGHT OF WAY LINE (APPROX.)
 - COMPUTATIONAL TIE LINE
 - STONE WALL (APPROX.)
 - IRON PIPE FOUND
 - IRON ROD FOUND
 - DRILL HOLE
 - UTILITY POLE WITH NUMBER
 - UTILITY LINE
 - ACRES
 - ± MORE OR LESS
 - BK 10874, PG 187 DEED BOOK & PAGE IN THE CUMBERLAND COUNTY REGISTRY OF DEEDS
 - △ 4 ARBITRARY TRAVERSE POINT WITH NUMBER
 - 12, 1001 ARBITRARY COMPUTATIONAL POINT NUMBER
 - R/W RIGHT OF WAY
 - N/F NOW OR FORMERLY HELD BY
 - EDGE OF TRAVELED WAY
 - PLAN BOOK & PAGE IN THE CUMBERLAND COUNTY REGISTRY OF DEEDS
 - SEWER MANHOLE
 - LIGHT POLE
 - CATCH BASIN
 - WATER VALVE
 - HYDRANT
 - SIGN

SEE ALSO DWG. C-2, EXISTING CONDITIONS PLAN BY DeLUCA-HOFFMAN ASSOCIATES, INC., CIVIL/SITE ENGINEERS, FOR ADDITIONAL INFORMATION AND INCORPORATION OF SITE SURVEY ONTO THEIR ENGINEERING PLAN

OWNER OF RECORD:
GRAPHIC SCALE
0' 20' 40'

BOUNDARY SURVEY
FOR
VOA
Pecks Island
CENTRAL AVENUE
PEAKS ISLAND, PORTLAND
(CUMBERLAND COUNTY)

DATE: APRIL 9, 2002 SCALE: 1" = 20'
Prepared By:
DIEGO LAND SERVICES, INC.
BRUCE W. MARTINSON, PRESIDENT
323 OLD BRINSWICK ROAD
BATH, MAINE 04530
TEL: (207) 442-5500
FAX: (207) 442-5504
EMAIL: bruce@dlsv.com
BOOK: 188

