

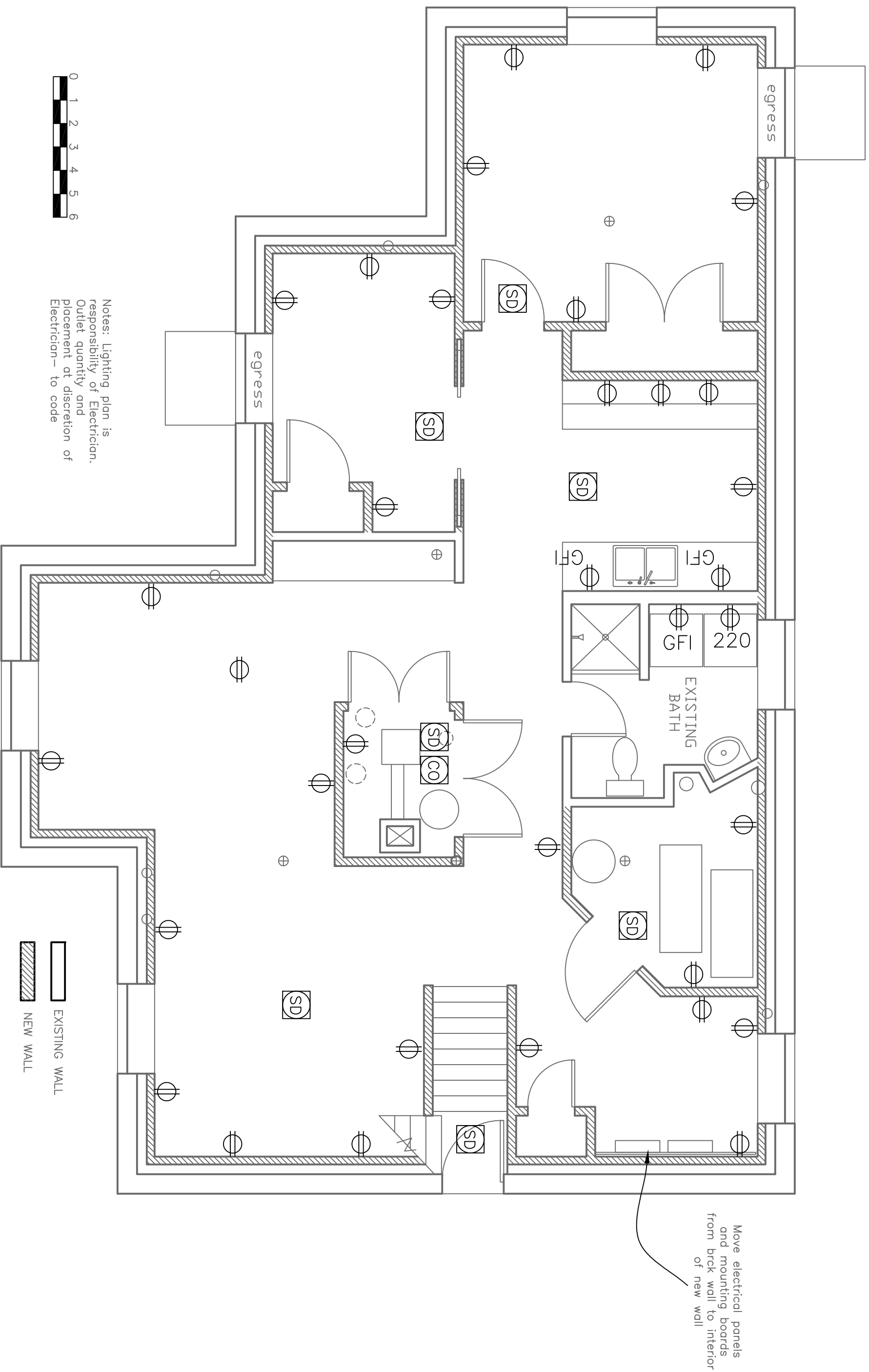
Rachel Conly
 Architectural Design
 26 Sterling Street
 Peaks Island, Maine 04108
 207.766.5625

**Proposed Basement
 Power Plan**

Maclissac
 155 Island Ave.
 Peaks Island, ME.
 04108

DATE 11.27.13 REVISED
 SCALE 1/4" = 1'-0" DRAWN BY **Harvey**

- NOTES**
- ⊕ duplex
 - ⊕ ground-fault circuit interrupter
 - ⊕ 220 volt switch
 - ⊕ 3-way switch
 - ⊕ dimmer switch
 - ⊕ smoke detector
 - ⊕ minimum 50 dfm wet fan
 - MIN 50 CFM
 - ⊕ ceiling mount light fixture
 - ⊕ pendant light fixture
 - ⊕ recessed can light fixture
 - ⊕ wall sconce light fixture
 - ⊕ wet location wall sconce light fixture
 - ⊕ fan/lighting
 - ⊕ fluorescent body switched
 - ○ ○ ○ undercounter
 - ⊕ ceiling fan / integral light
 - ⊕ ceiling fan
 - ⊕ phone jack
 - ⊕ DSL
 - ⊕ DSL
 - ⊕ CABLE
 - ⊕ CAT 5
 - ⊕ central vacuum
 - ⊕ compact fluorescent recessed can



A Proposed Basement Power Plan
 1/4" = 1'-0"