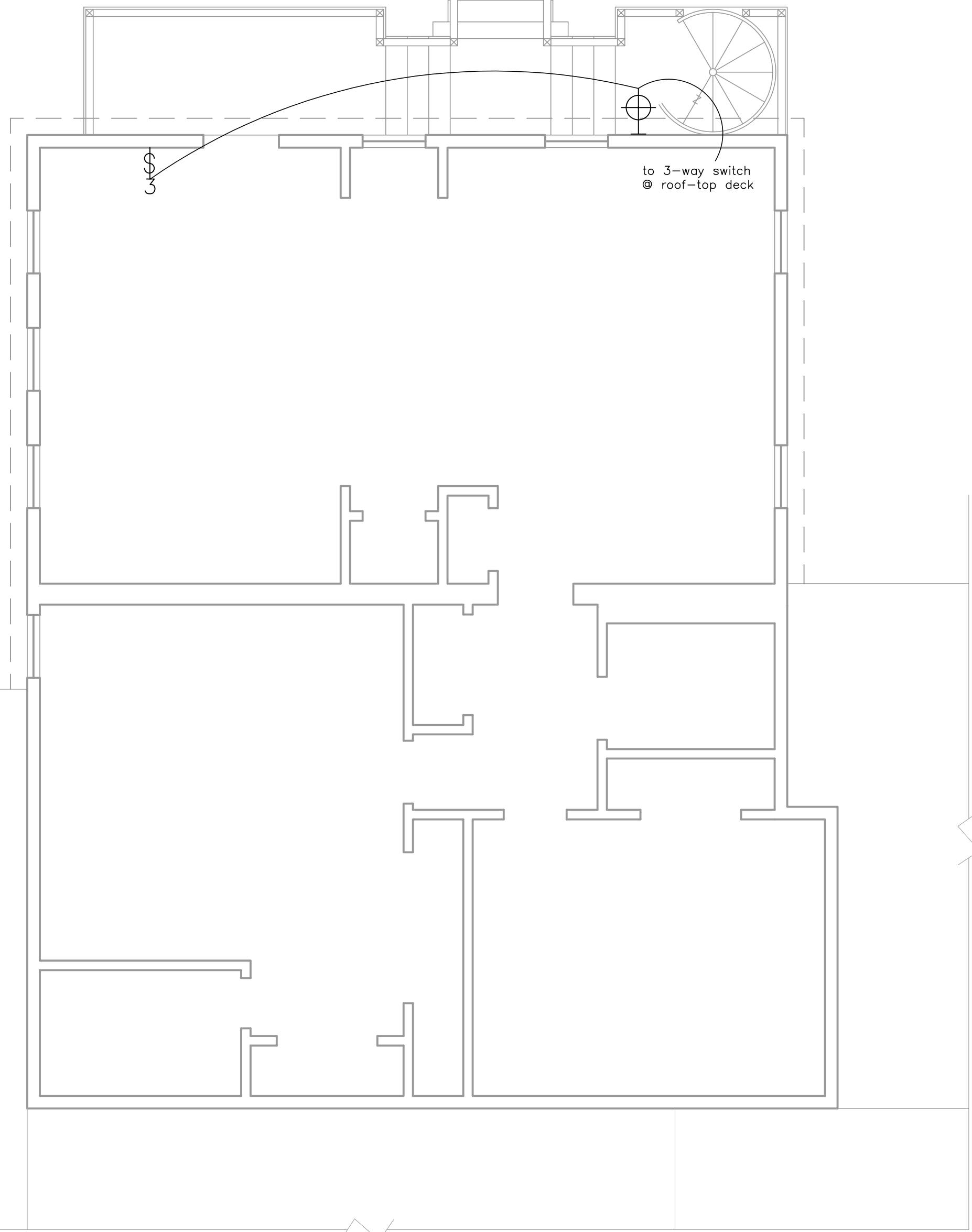
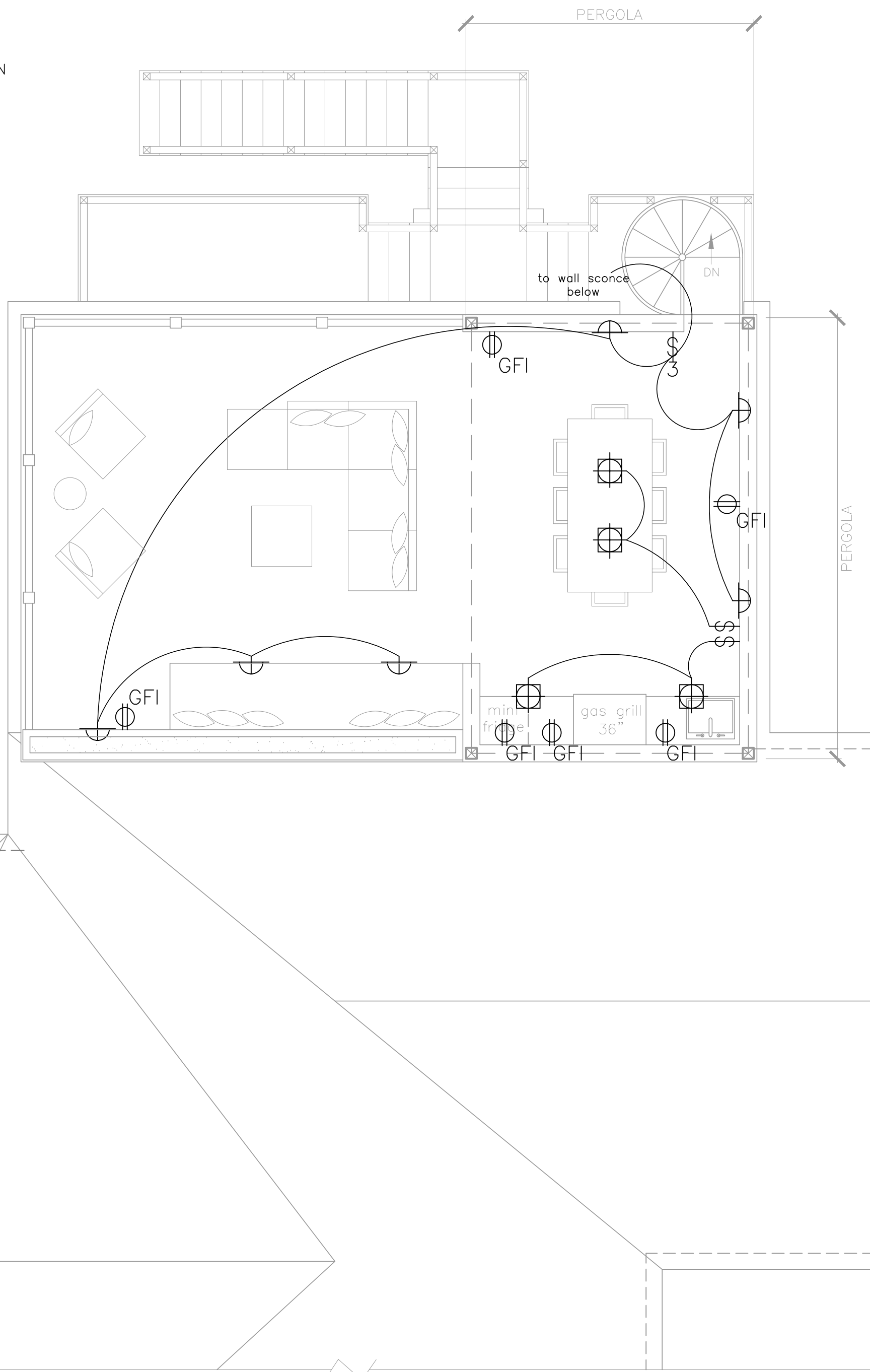


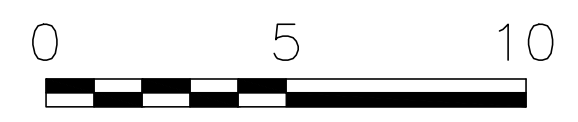
NOTE: FINAL LIGHTING AND POWER PLAN AT DISCRETION OF ELECTRICIAN, TO CODE. ALL SWITCHES AND LIGHT FIXTURES TO BE APPROVED FOR WET LOCATION USE.



A Proposed Second Floor Electrical
1/4" = 1'-0"



B Proposed Roof-top Deck Electrical
1/4" = 1'-0"



Rachel Conly
Architectural Design

26 Sterling Street
Peaks Island, Maine 04108
207.766.5625

Proposed Power & Lighting

PROJECT
Belden Residence
141 Island Ave.
Unit #6
Peaks Island, ME

DATE 02.05.15	REVISED
SCALE 1/4"=1'-0"	DRAWN BY Rachel & Harvey

- NOTES
- ⊕ ground-fault circuit interrupter
 - \$ switch
 - ⌘ 3-way switch
 - ⊕ wet location ceiling mount light fixture
 - ⌘ wet location "riser" style recessed wall light fixture
 - ⊕ wet location wall sconce light fixture

E1