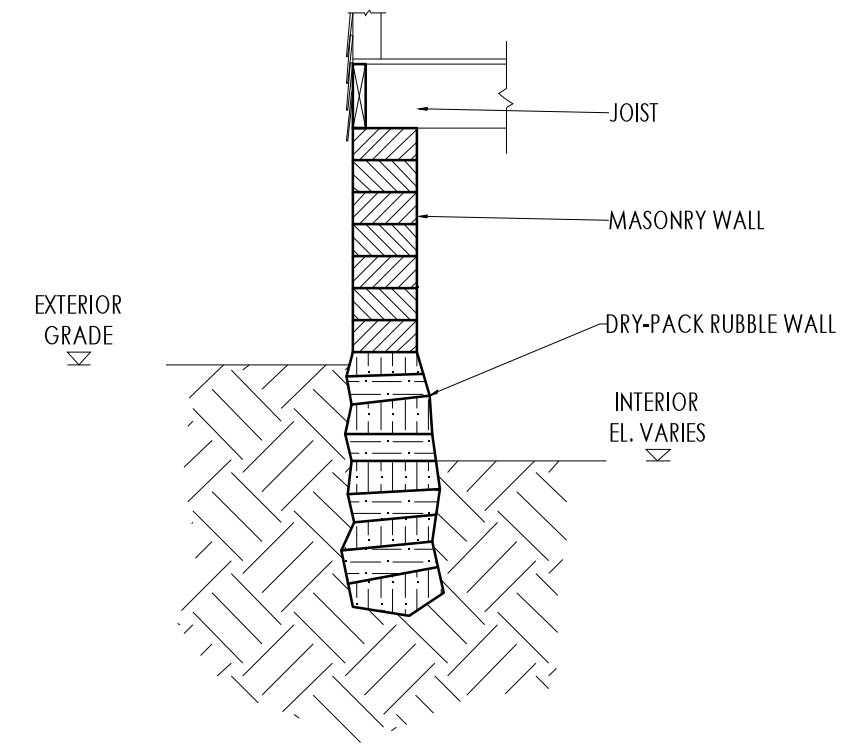
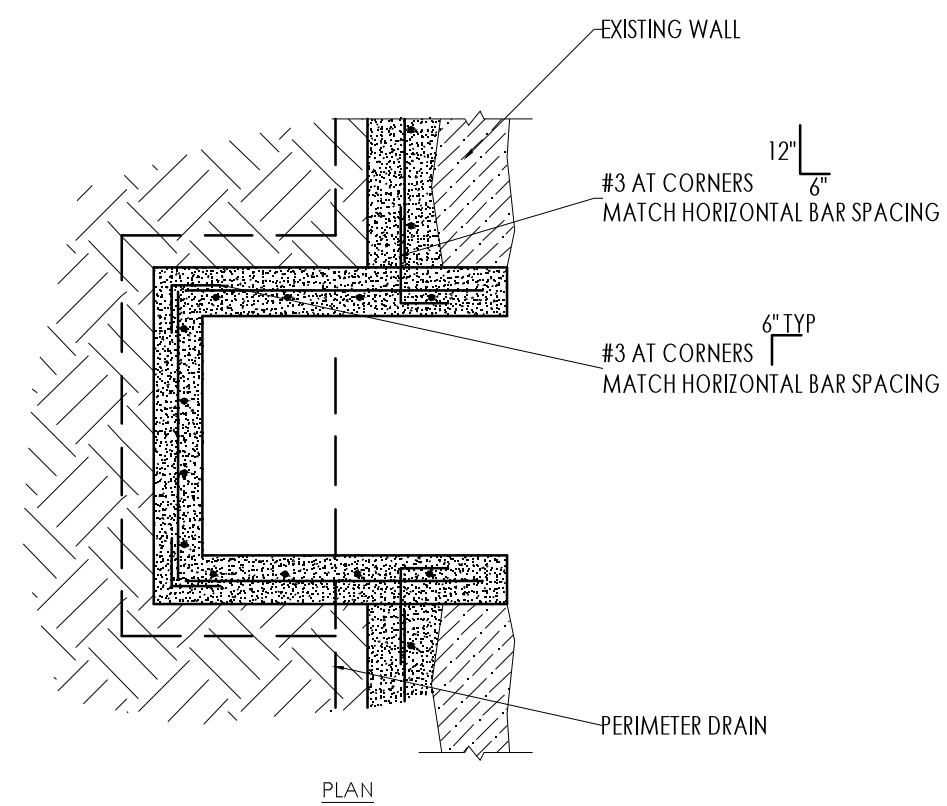


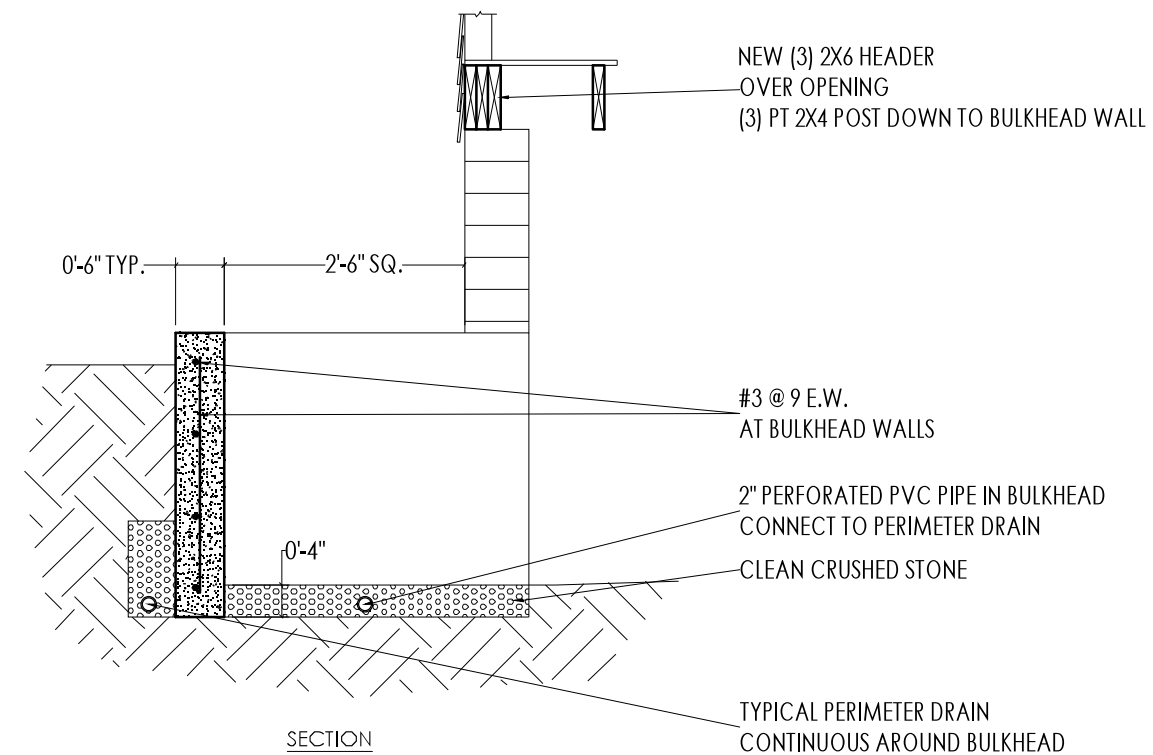
2 SECTION
1/2" = 1'-0"
1' 2'



1 EXISTING WALL
1/2" = 1'-0"
1' 2'

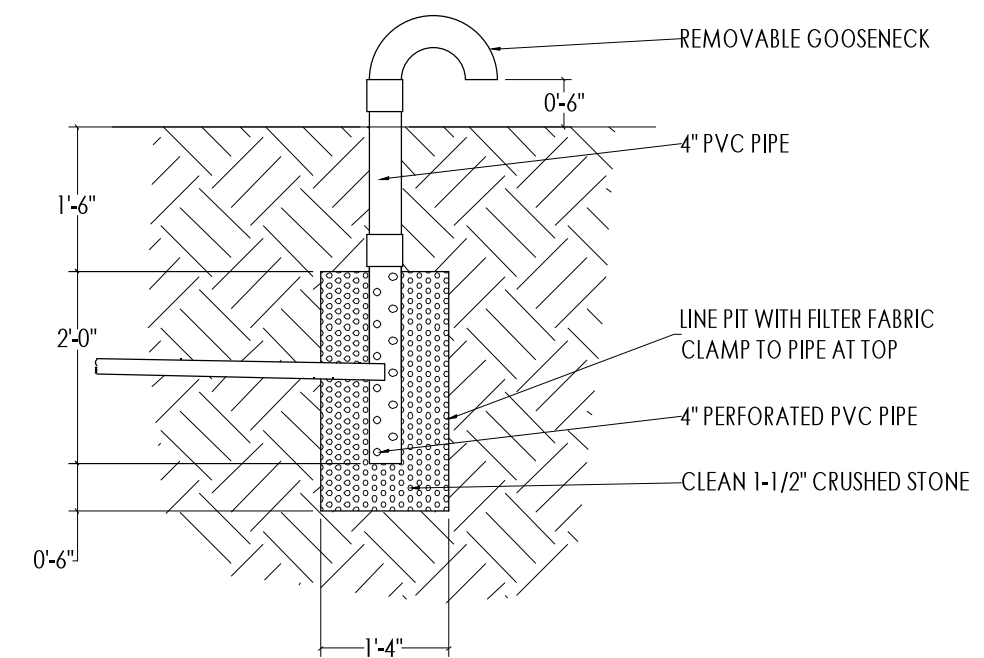


3 BULKHEAD
1/2" = 1'-0"
1' 2'

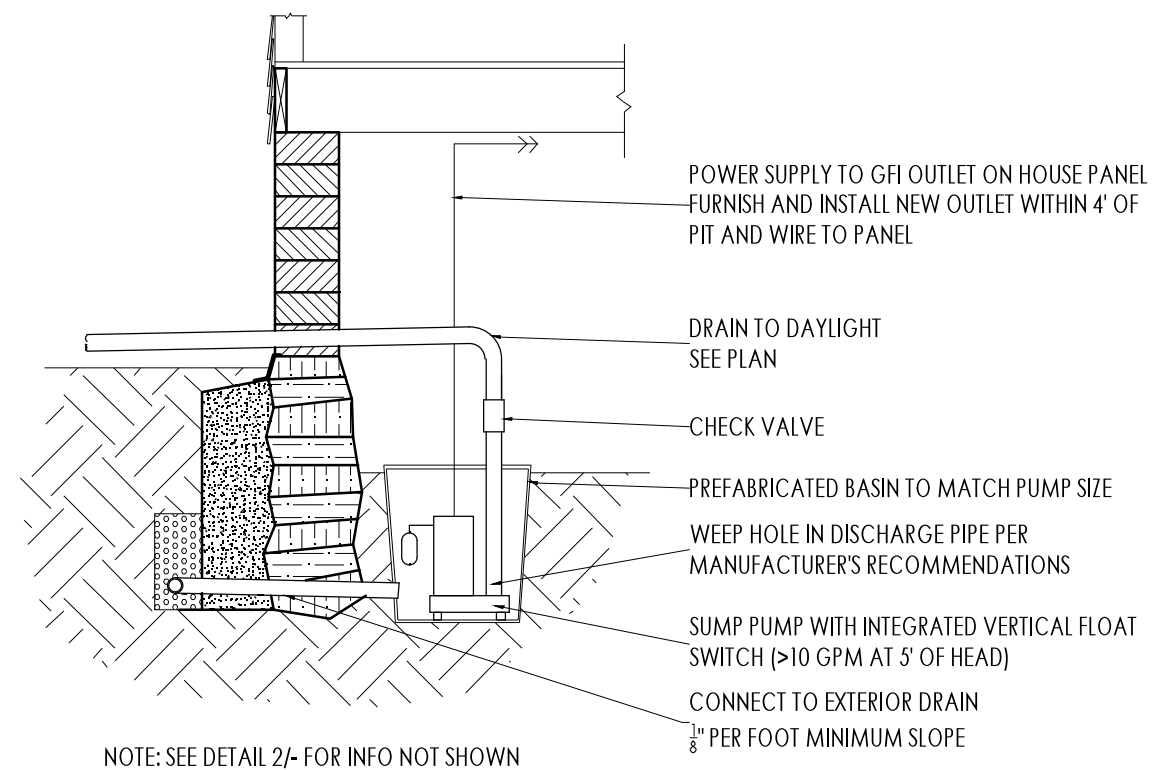


DRYWELL TEST PROCEDURE
PRIOR TO CONSTRUCTION

- (1) DIG TEST PIT 6" DIAMETER 48" DEEP AT LOCATION NOTED ON PLAN. CLEAN LOOSE SOIL FROM BOTTOM OF PIT.
- (2) PLACE 2" CLEAN CRUSHED STONE AT BOTTOM OF PIT.
- (3) PARTIALLY FILL DRAIN WITH 12" OF WATER TO PRESATURATE SOIL.
- (4) REPEAT STEP 4 AFTER FIRST 12" OF WATER HAS DRAINED.
- (5) FILL WATER LEVEL TO 6" ABOVE CRUSHED STONE.
- (6) AFTER 30 MINUTES, MEASURE AND NOTE WATER DROP TO NEAREST 1/16" AND REFILL TO 6" LINE. IF THE WATER DRAINS AWAY IN LESS THAN 30 MINUTES, ADJUST TEST INTERVAL TO TEN MINUTES.
- (7) REPEAT STEP 7 THREE TIMES. THE FINAL TEST IS USED TO CALCULATE PERCOLATION RATE (INCHES OF WATER DROP PER HOUR).
- (8) ACCEPTABLE PERCOLATION RATE IS GREATER THAN 1" WATER DROP PER 60 MINUTES. IF ACCEPTABLE PERCOLATION RATES ARE NOT ACHIEVED, TRY AN ALTERNATE TEST PIT LOCATION OR INSTALL SUMP PUMP ALTERNATE SEE DETAIL 4/-)



4 DRYWELL
1/2" = 1'-0"
1' 2'



4A SUMP
1/2" = 1'-0"
1' 2'

JACKSON
ENGINEERING

21 LUTHER STREET
PEAKS ISLAND, MAINE 04108
207-200-6106
JXENGINEERING.COM



PROJECT

AVENUE HOUSE
FOUNDATION
AND DRAINAGE
REPAIRS

ISLAND AVENUE
PEAKS ISLAND, MAINE

DATE

7/1/2013

SCALE

AS NOTED

REVISIONS

C2.0
DETAILS