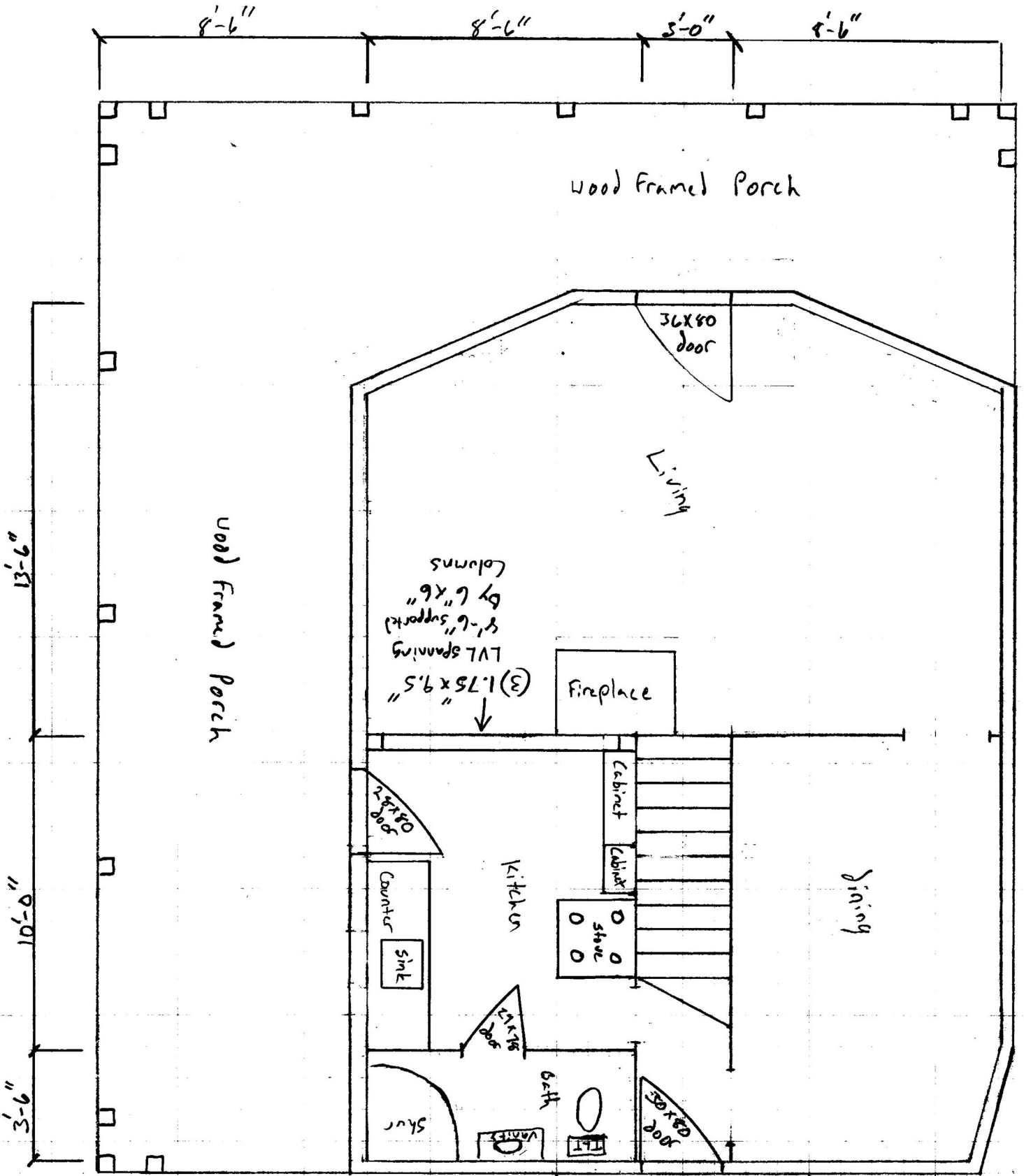


First Floor 1/4" = 1'
Floor Plan

Church Ave

□ Decorative support Columns



Wood Framed Porch

36x80 door

Living

LVL spanning 8'-6" supported by 6"x6" columns
(3) 1.75"x9.5"

Fireplace

Cabinet
Cabinet

Stove

Kitchen

Counter
Sink

Dining

Bath

Shower

4x4 Deck

Wood Framed Porch

8'-6"

8'-6"

5'-0"

8'-6"

13'-3 1/2"

10'-0"

13'-6"