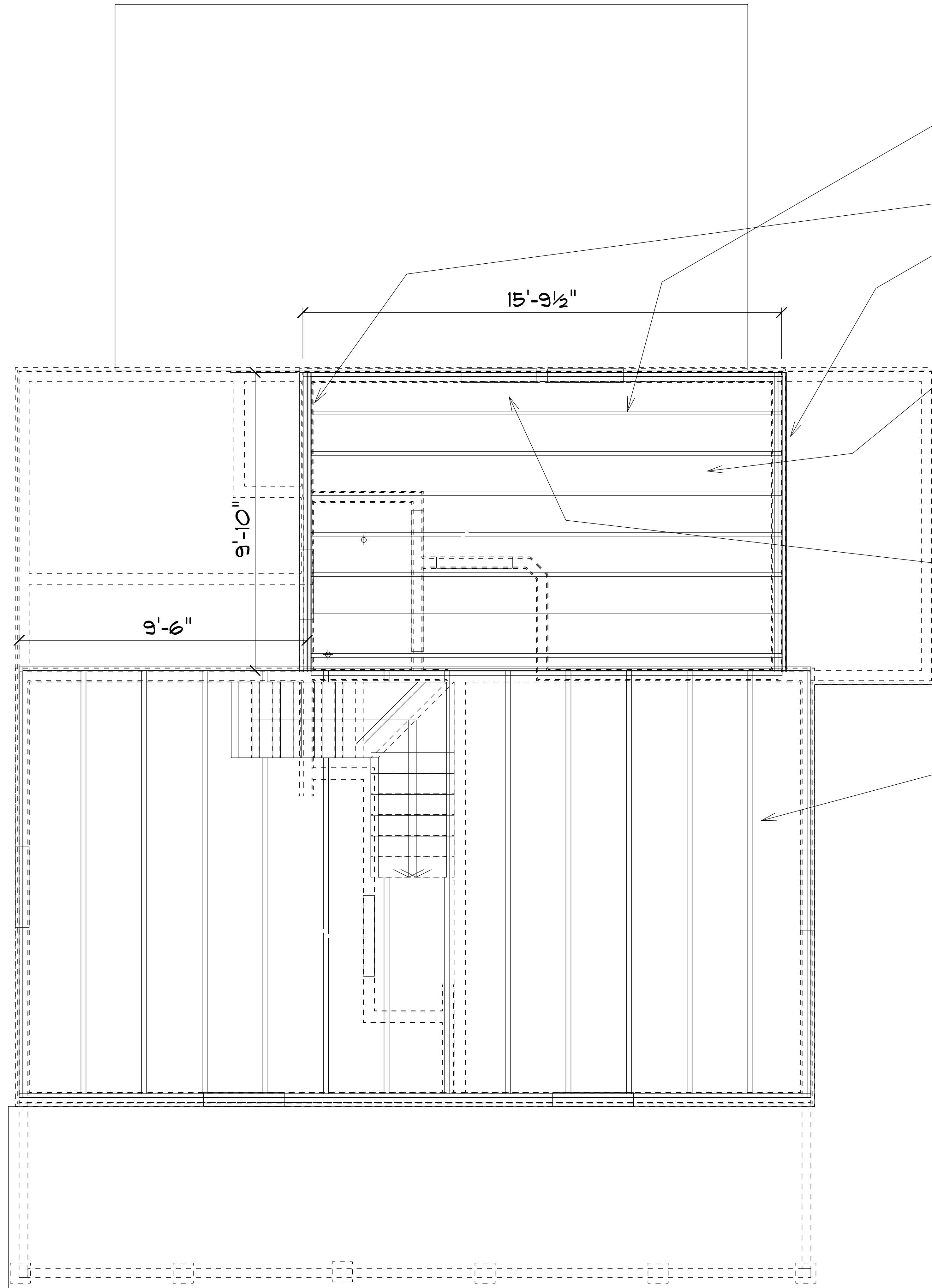


**Second Floor- Floor framing**

SCALE: 1/2" = 1'-0"



**Notes:**

- New floor to be I-Joist
  - Tus Joist 9 1/2" x 1 3/4"
  - TJI 110 spaced 16" O.C.
  - L360
- Support beams to be 3 1/2" x 11 7/8"
  - Frame top of beam flush with top of floor joists.
- Joist to connect to T&G Advantech
  - Glued and nailed with 2 3/8" ring shanked nails
- Structural ridge to be supported using continuous 3 1/2" PSL posts extending to new pier footings below.
- Exterior wall framing to be 2x4 KD
  - Spaced 16" O.C.
  - Single bottom plate, double top plate
- Window header to be (2)2x8 KD
- Existing floor joists true 2" x 6" joists spaced 24" O.C.