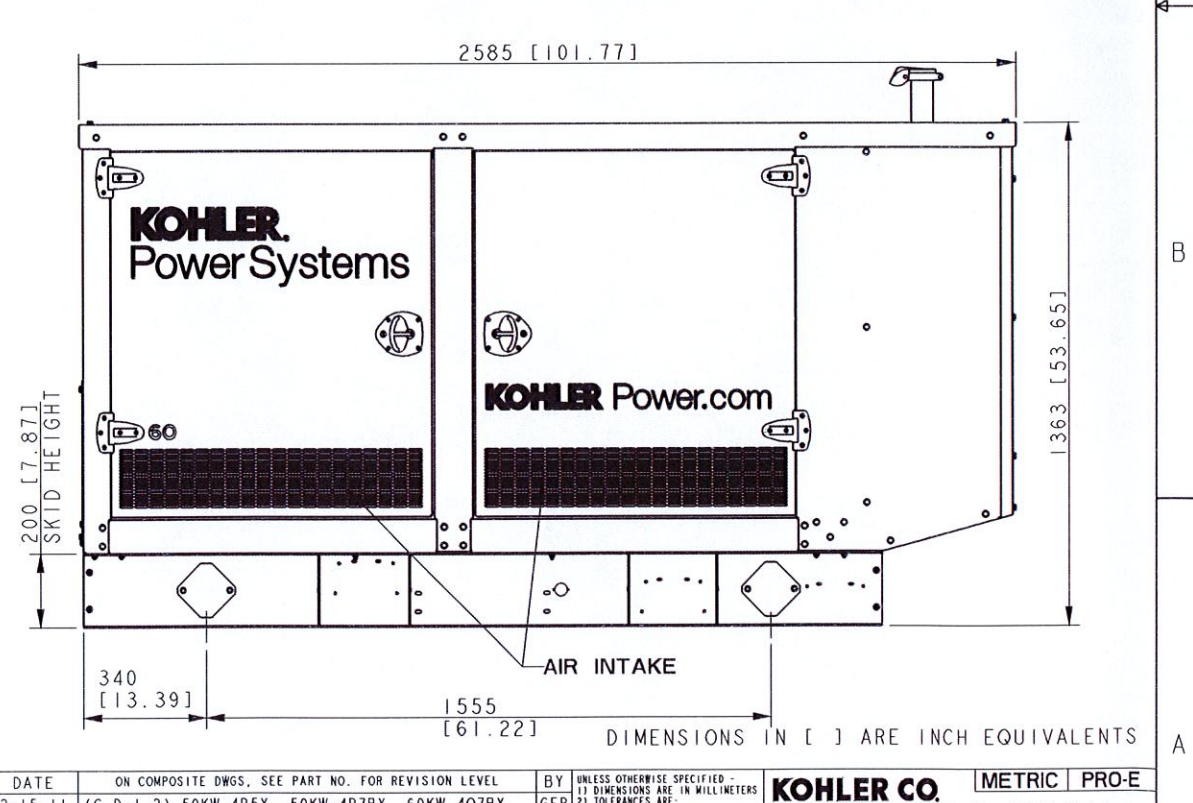
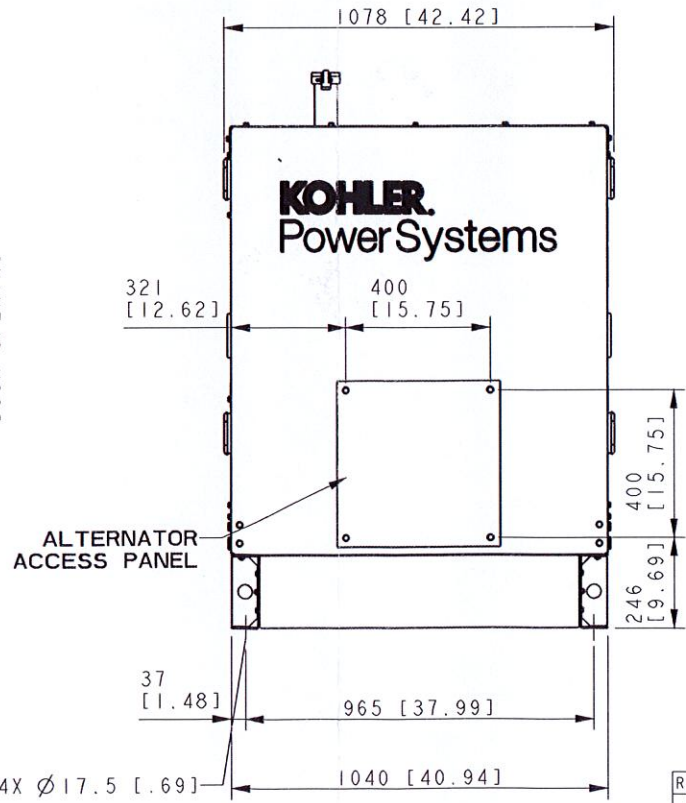
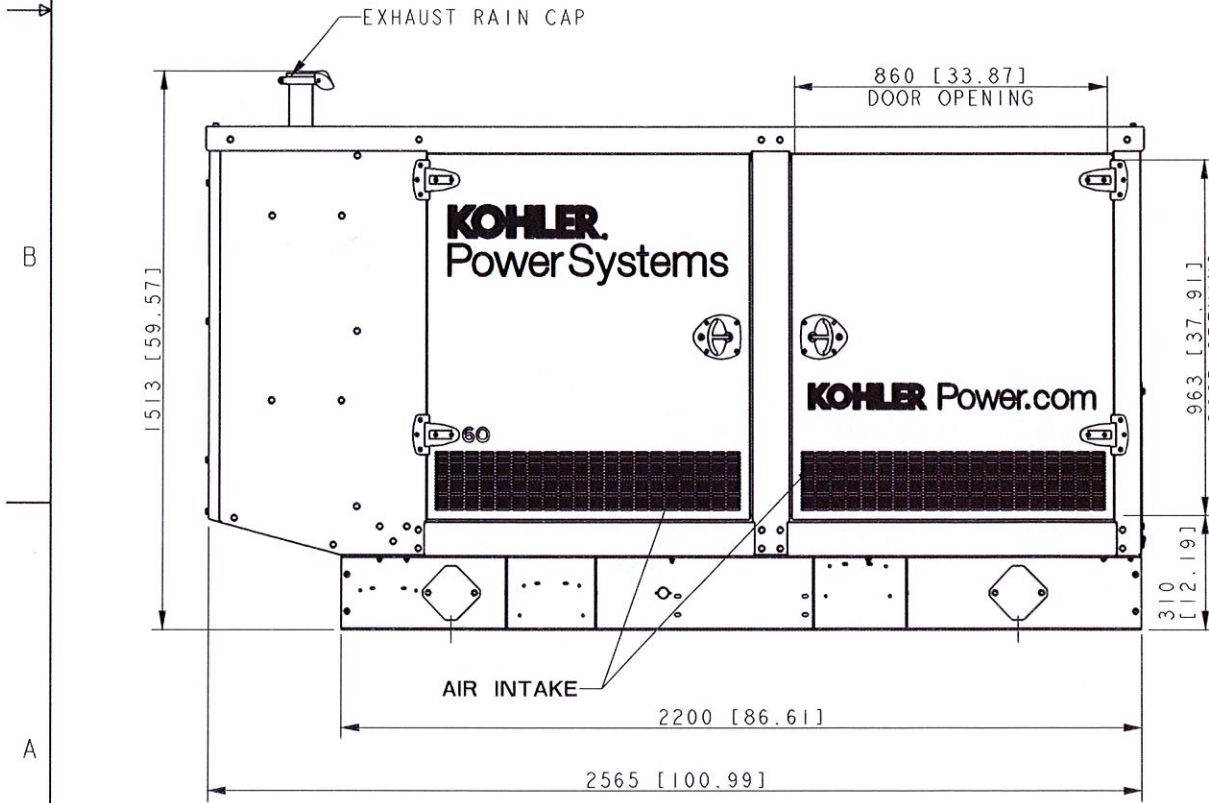


MODEL	GENSET WEIGHT (WET) WITH ENCLOSURE		ENCLOSURE ONLY	MODEL	GENSET WEIGHT (WET) WITH ENCLOSURE		ENCLOSURE ONLY
25kW 4P4/4Q4	STEEL WEATHER	855 Kg [1885 LBS]	239 Kg [527 LBS]	50KW 4P8 60KW 4Q8	STEEL WEATHER	1099 Kg [2423 LBS]	239 Kg [527 LBS]
	STEEL SOUND	860 Kg [1896 LBS]	244 Kg [538 LBS]		STEEL SOUND	1104 Kg [2434 LBS]	244 Kg [538 LBS]
	ALUMINUM SOUND	768 Kg [1693 LBS]	152 Kg [335 LBS]		ALUMINUM SOUND	1012 Kg [2231 LBS]	152 Kg [335 LBS]
30kW 4P5/4Q5	STEEL WEATHER	878 Kg [1936 LBS]	239 Kg [527 LBS]	60KW 4S7/4V7	STEEL WEATHER	1200 Kg [2646 LBS]	239 Kg [527 LBS]
	STEEL SOUND	883 Kg [1947 LBS]	244 Kg [538 LBS]		STEEL SOUND	1205 Kg [2657 LBS]	244 Kg [538 LBS]
	ALUMINUM SOUND	791 Kg [1744 LBS]	152 Kg [335 LBS]		ALUMINUM SOUND	1113 Kg [2454 LBS]	152 Kg [335 LBS]
30kW 4P7/4Q7	STEEL WEATHER	919 Kg [2026 LBS]	239 Kg [527 LBS]	60KW 4P10/4Q10	STEEL WEATHER	1142 Kg [2518 LBS]	239 Kg [527 LBS]
	STEEL SOUND	924 Kg [2037 LBS]	244 Kg [538 LBS]		STEEL SOUND	1147 Kg [2529 LBS]	244 Kg [538 LBS]
	ALUMINUM SOUND	832 Kg [1834 LBS]	152 Kg [335 LBS]		ALUMINUM SOUND	1055 Kg [2326 LBS]	152 Kg [335 LBS]
40kW 4P5/4Q5	STEEL WEATHER	936 Kg [2064 LBS]	239 Kg [527 LBS]	60KW 4S9/4V9	STEEL WEATHER	1253 Kg [2762 LBS]	239 Kg [527 LBS]
	STEEL SOUND	941 Kg [2075 LBS]	244 Kg [538 LBS]		STEEL SOUND	1258 Kg [2773 LBS]	244 Kg [538 LBS]
	ALUMINUM SOUND	849 Kg [1872 LBS]	152 Kg [335 LBS]		ALUMINUM SOUND	1166 Kg [2571 LBS]	152 Kg [335 LBS]
40kW 4Q7 45kW 4P7	STEEL WEATHER	977 Kg [2154 LBS]	239 Kg [527 LBS]	50KW 4P5X	STEEL WEATHER	1020 Kg [2249 LBS]	239 Kg [527 LBS]
	STEEL SOUND	982 Kg [2165 LBS]	244 Kg [538 LBS]		STEEL SOUND	1025 Kg [2260 LBS]	244 Kg [538 LBS]
	ALUMINUM SOUND	890 Kg [1962 LBS]	152 Kg [335 LBS]		ALUMINUM SOUND	933 Kg [2057 LBS]	152 Kg [335 LBS]
45kW 4P8/4Q8	STEEL WEATHER	997 Kg [2198 LBS]	239 Kg [527 LBS]	50KW 4P7BX/4Q7BX	STEEL WEATHER	1059 Kg [2335 LBS]	239 Kg [527 LBS]
	STEEL SOUND	1002 Kg [2209 LBS]	244 Kg [538 LBS]		STEEL SOUND	1064 Kg [2346 LBS]	244 Kg [538 LBS]
	ALUMINUM SOUND	910 Kg [2006 LBS]	152 Kg [335 LBS]		ALUMINUM SOUND	972 Kg [2143 LBS]	152 Kg [335 LBS]
45kW 4P10/4Q10	STEEL WEATHER	1040 Kg [2293 LBS]	239 Kg [527 LBS]	60KW 4P10X/4Q10X	STEEL WEATHER	1122 Kg [2475 LBS]	239 Kg [527 LBS]
	STEEL SOUND	1045 Kg [2304 LBS]	244 Kg [538 LBS]		STEEL SOUND	1127 Kg [2486 LBS]	244 Kg [538 LBS]
	ALUMINUM SOUND	953 Kg [2101 LBS]	152 Kg [335 LBS]		ALUMINUM SOUND	1032 Kg [2283 LBS]	152 Kg [335 LBS]
50 4P7/4Q7	STEEL WEATHER	1079 Kg [2379 LBS]	239 Kg [527 LBS]	50KW 4P8X	STEEL WEATHER	1070 Kg [2358 LBS]	239 Kg [527 LBS]
	STEEL SOUND	1084 Kg [2390 LBS]	244 Kg [538 LBS]		STEEL SOUND	1075 Kg [2369 LBS]	244 Kg [538 LBS]
	ALUMINUM SOUND	992 Kg [2187 LBS]	152 Kg [335 LBS]		ALUMINUM SOUND	982 Kg [2166 LBS]	152 Kg [335 LBS]
50 4P10/4Q10	STEEL WEATHER	1142 Kg [2518 LBS]	239 Kg [527 LBS]	60KW 4P7BX	STEEL WEATHER	1059 Kg [2335 LBS]	239 Kg [527 LBS]
	STEEL SOUND	1147 Kg [2529 LBS]	244 Kg [538 LBS]		STEEL SOUND	1064 Kg [2346 LBS]	244 Kg [538 LBS]
	ALUMINUM SOUND	1055 Kg [2326 LBS]	152 Kg [335 LBS]		ALUMINUM SOUND	972 Kg [2143 LBS]	152 Kg [335 LBS]
				60KW 4P8X	STEEL WEATHER	1070 Kg [2358 LBS]	239 Kg [527 LBS]
					STEEL SOUND	1075 Kg [2369 LBS]	244 Kg [538 LBS]
					ALUMINUM SOUND	982 Kg [2166 LBS]	152 Kg [335 LBS]



NOTE:  
IF IBC CERTIFICATION IS REQUIRED, SEE SEISMIC  
ADV FOR INSTALLATION INSTRUCTIONS

25-60 KW GM  
2009 EMISSIONS MODELS  
3PH RECONNECTABLE, 1PH  
AND 600V ALTERNATORS

REV	DATE	ON COMPOSITE DWGS, SEE PART NO. FOR REVISION LEVEL	BY	UNLESS OTHERWISE SPECIFIED - 1) DIMENSIONS ARE IN MILLIMETERS 2) TOLERANCES ARE: X.XX ± 0.25 X.X ± 1.0 X ± 1.5 SURFACE FINISH ANGLES ± 0° 30' MAX.	THIRD ANGLE PROJECTION	APPROVALS	DATE	KOHLER CO. METRIC PRO-E POWER SYSTEMS, KOHLER, WI 53044 U.S.A. THIS DRAWING IN DESIGN AND DETAIL IS KOHLER CO. PROPERTY AND MUST NOT BE USED EXCEPT IN CONNECTION WITH KOHLER CO. WORK. ALL RIGHTS OF DESIGN OR INVENTION ARE RESERVED.	
F	2-15-11	(C,D-1,2) 50KW 4P5X, 50KW 4P7BX, 60KW 4Q7BX, 50KW 4P10X AND 60KW 4Q10X ADDED. [91116]	GFR					TITLE	DIMENSION PRINT, 25-60 KW GM ENCLOSURE
G	2-15-13	VIEWS UPDATED TO NEW DECALS [CT32175]	SAM					SCALE	0.10 CAD NO.
H	4-24-13	DRAWING VOIDED [CT29991]	SAM					SHEET	1 of 1
J	5-7-13	DRAWING REINSTATED (C-3) 4P8X/4Q8X ADDED [C444961]	SAM					DRG NO.	ADV-7657
K	04-03-14	(C-3) 60KW 4Q7BX & 60KW 4Q8X REMOVED; MODEL: 60KW 4P7BX & 60KW 4P8X ADDED; (B-3 & B-7) CLEAN POWER DECALS REMOVED [CT76763]	SSH					APPROVED	RJD 12-9-08

DIMENSIONS IN [ ] ARE INCH EQUIVALENTS

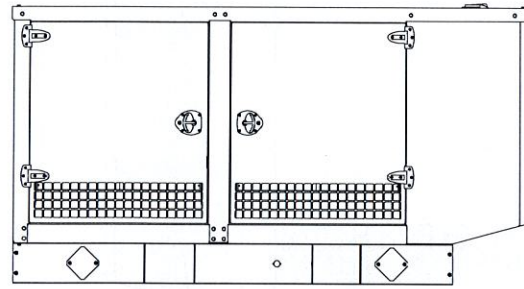


## Industrial Generator Set Accessories

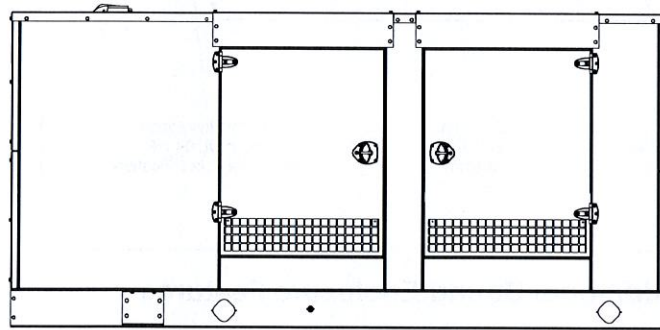
# KOHLER Power Systems

### Weather and Sound Enclosures

**9001**  
**KOHLER**  
 POWER SYSTEMS  
 NATIONALLY REGISTERED



25-60 kW Enclosure



80-150 kW Enclosure

#### Applicable to the following:

25-100REZG  
 50-150REZGB  
 80/100REZGD and 80/100RZGD  
 125/150REZGC and 125/150RZGC

#### Weather Enclosure Standard Features

- Internal-mounted critical silencer and flexible exhaust connector.
- Skid-mounted, steel construction with hinged doors.
- Fade-, scratch-, and corrosion-resistant Kohler® Power Armor™ cream beige automotive-grade textured finish.
- Lockable, flush-mounted door latches.
- Vertical air inlet and outlet discharge to redirect air and reduce noise.
- High wind bracing, 241 kph (150 mph). Available on all models, except 80/100REZGB with steel enclosure and 80/100RZGB with steel enclosure.

#### Sound Enclosure Standard Features

- Includes all of the weather enclosure features with the addition of acoustic insulation material.
- Skid-mounted, steel or aluminum construction with hinged doors. Aluminum enclosures are recommended for high humidity and/or high salt/coastal regions.
- Acoustic insulation that meets UL 94 HF1 flammability classification and repels moisture absorption.
- Sound attenuated enclosure that uses up to 51 mm (2 in.) of acoustic insulation, acoustic-lined air inlet hoods, and acoustic-lined air discharge hood.

### Weather and Sound Enclosure Specifications

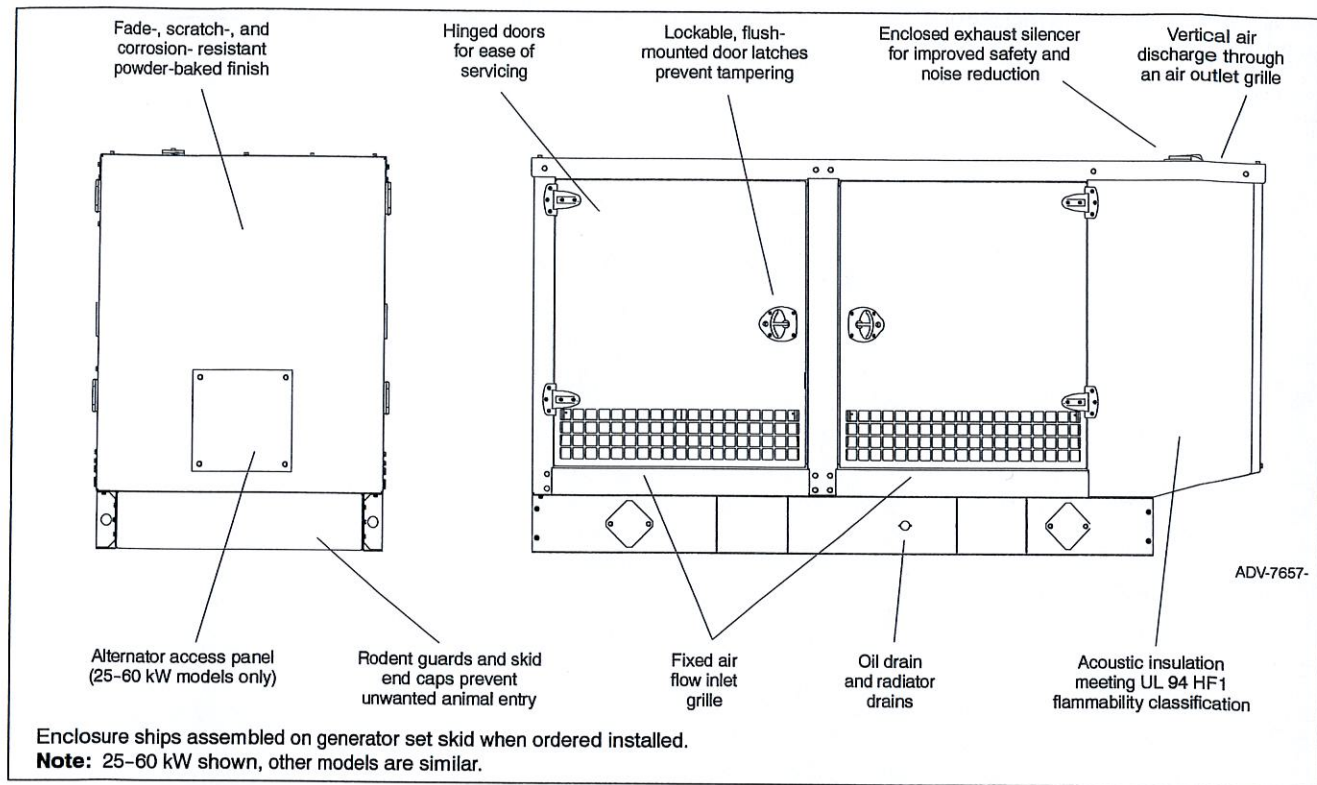
Model	Max. Dimensions, mm (in.)			Weight, kg (lb.) *			Sound Enclosure, Sound Pressure at 7 m (23 ft.), dB(A) at 60 Hz, Full Load
	Length	Width	Height	Steel Weather Enclosure	Steel Sound Enclosure	Aluminum Sound Enclosure	
25REZG	2585(101.8)	1078 (42.4)	1513 (59.6)	855 (1880)	860 (1891)	768 (1689)	68
30REZG				918 (2026)	924 (2037)	832 (1834)	68
40REZG				977 (2149)	982 (2160)	890 (1958)	66
45REZG				1040 (2288)	1045 (2299)	953 (2096)	66
50REZGB				1122 (2475)	1127 (2486)	1035 (2283)	64
60REZGB				1122 (2475)	1127 (2486)	1035 (2283)	65
80REZGD/RZGD				3526(138.8)	1153 (45.4)	1694 (66.7)	1454 (3205)
100REZG	3506(138.0)	1156 (45.5)	1696 (66.8)	1715 (3781)	1725 (3803)	1539 (3393)	74
100REZGD/RZGD	3526(138.8)	1153 (45.4)	1694 (66.7)	1557 (3434)	1568 (3457)	1506 (3321)	72
125REZGB	3506(138.0)	1156 (45.5)	1696 (66.8)	1741 (3837)	1751 (3859)	1565 (3449)	72
125REZGC/RZGC	3526(138.8)	1153 (45.4)	1724 (67.9)	1739 (3834)	1758 (3876)	1592 (3509)	71
150REZGB	3506(138.0)	1156 (45.5)	1696 (66.8)	1856 (4091)	1866 (4113)	1680 (3703)	75
150REZGC/RZGC	3526(138.8)	1153 (45.4)	1696 (66.8)	1877 (4138)	1897 (4183)	1730 (3813)	74

\* Weight includes the generator set (wet), enclosure, and silencer. The generator set weight represents using the largest alternator option.

Note: Refer to the respective ADV drawings for details. Refer to TIB-114 for complete generator set sound data.



## Weather and Sound Enclosure



### Enclosure Features

- Available in steel (14 gauge) formed panel, solid construction. Preassembled package offering corrosion resistant, dent resilient structure mounting directly to skid.
- Power Armor™ automotive-grade finish resulting in advanced corrosion and abrasion protection as well as enhanced edge coverage and color retention.
- Internal critical exhaust silencer offering maximum component life and operator safety.  
**NOTE:** Installing an additional length of exhaust tail pipe may increase backpressure levels. Please refer to the generator set spec sheet for the maximum backpressure value.
- Interchangeable modular panel construction. Allows complete serviceability or replacement without compromising enclosure design.
- Cooling/combustion air intake with a horizontal air inlet.  
 Sized for maximum cooling airflow.
- Service access. Multi-personnel doors for easy access to generator set control and servicing of the oil fill and battery.
- Cooling air discharge. Weather protective design featuring a vertical air discharge outlet grille. Redirects cooling air up and above enclosures to reduce noise ambient.

### Additional Sound Enclosure Features

- Available in steel (14 gauge) or aluminum 3.2 mm (0.125 in.) formed panel, solid construction.
- Attenuated design. Mechanically restrained acoustic insulation UL 94 HF1 listed for flame resistance.
- Cooling air discharge. The sound enclosures include acoustic insulation with urethane film.

### Available Approvals and Listings

- UL 2200 Listing
- CSA Approval
- IBC Seismic Certification

**NOTE:** Some models may have limited third-party approvals, see your local distributor for details.

**DISTRIBUTED BY:**

Availability is subject to change without notice. Kohler Co. reserves the right to change the design or specifications without notice and without any obligation or liability whatsoever. Contact your local Kohler® generator set distributor for availability.



Model: **40REZG**

# KOHLER POWER SYSTEMS

190-600 V Gas



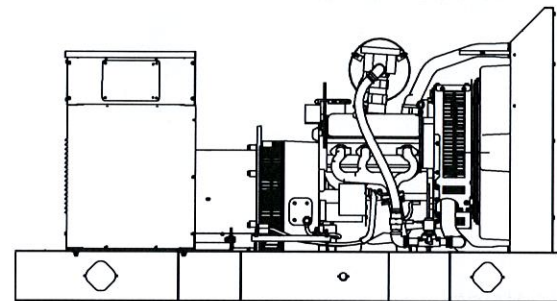
**EPA-Certified for Stationary  
Emergency Applications**

## Standard Features

- Kohler Co. provides one-source responsibility for the generating system and accessories.
- The generator set and its components are prototype-tested, factory-built, and production-tested.
- The 60 Hz generator set offers a UL 2200 listing.
- The generator set accepts rated load in one step.
- The 60 Hz generator set meets NFPA 110, Level 1, when equipped with the necessary accessories and installed per NFPA standards.
- A one-year limited warranty covers all systems and components. Two- and five-year extended warranties are also available.
- Alternator features:
  - The unique Fast-Response™ II excitation system delivers excellent voltage response and short-circuit capability using a permanent magnet (PM)-excited alternator.
  - The brushless, rotating-field alternator has broadrange reconnectability.
- Other features:
  - Kohler designed controllers for guaranteed system integration and remote communication. See Controllers on page 3.
  - The electronic, isochronous governor incorporates an integrated drive-by-wire throttle body actuator delivering precise frequency regulation.

## Ratings Range

Standby:	kW kVA	60 Hz	50 Hz
		33-40 33-50	24-34 26-40



## Generator Set Ratings

Alternator	Voltage	Ph	Hz	Natural Gas 130°C Rise Standby Rating		LP Gas 130°C Rise Standby Rating	
				kW/kVA	Amps	kW/kVA	Amps
4P5	120/208	3	60	39/49	135	39/49	135
	127/220	3	60	39/49	128	40/50	131
	120/240	3	60	39/49	117	39/49	117
	120/240	1	60	33/33	138	33/33	138
	139/240	3	60	39/49	117	40/50	120
	220/380	3	60	35/44	66	35/44	66
	277/480	3	60	39/49	58	40/50	60
	347/600	3	60	39/49	47	40/50	48
	110/190	3	50	31/39	119	32/40	122
	115/200	3	50	28/35	101	28/35	101
120/208	3	50	24/30	83	24/30	83	
110/220	3	50	31/39	102	32/40	105	
110/220	1	50	26/26	118	26/26	118	
220/380	3	50	31/39	59	32/40	61	
230/400	3	50	28/35	51	28/35	51	
240/416	3	50	24/30	42	24/30	42	
4Q5	120/240	1	60	38/38	158	38/38	158
	110/220	1	50	30/30	136	32/32	145
4Q7	120/240	1	60	40/40	167	40/40	167
	110/220	1	50	32/32	145	34/34	155

RATINGS: All three-phase units are rated at 0.8 power factor. All single-phase units are rated at 1.0 power factor. Standby Ratings: The standby rating is applicable to varying loads for the duration of a power outage. There is no overload capability for this rating. Prime Power Ratings: At varying load, the number of generator set operating hours is unlimited. A 10% overload capacity is available for one hour in twelve. Ratings are in accordance with ISO-8528-1 and ISO-3046-1. For limited running time and continuous ratings, consult the factory. Obtain technical information bulletin (TIB-101) for ratings guidelines, complete ratings definitions, and site condition derates. The generator set manufacturer reserves the right to change the design or specifications without notice and without any obligation or liability whatsoever. For dual fuel engines, use the natural gas ratings for both the primary and secondary fuels.



## Alternator Specifications

Specifications	Alternator
Manufacturer	Kohler
Type	4-Pole, Rotating-Field
Exciter type	Brushless, Permanent-Magnet
Leads: quantity, type	
4P5	12, Reconnectable
4Q5, 4Q7	4, 110-120/220-240
Voltage regulator	Solid State, Volts/Hz
Insulation:	NEMA MG1
Material	Class H
Temperature rise	130°C, Standby
Bearing: quantity, type	1, Sealed
Coupling	Flexible Disc
Amortisseur windings	Full
Voltage regulation, no-load to full-load	Controller Dependent
One-step load acceptance	100% of Rating
Unbalanced load capability	100% of Rated Standby Current
Peak motor starting kVA:	(35% dip for voltages below)
480 V, 380 V 4P5 (12 lead)	140 (60 Hz), 98 (50 Hz)
240 V, 220 V 4Q5 (4 lead)	95 (60 Hz), 78 (50 Hz)
240 V, 220 V 4Q7 (4 lead)	104 (60 Hz), 91 (50 Hz)

- NEMA MG1, IEEE, and ANSI standards compliance for temperature rise and motor starting.
- Sustained short-circuit current of up to 300% of the rated current for up to 10 seconds.
- Sustained short-circuit current enabling downstream circuit breakers to trip without collapsing the alternator field.
- Self-ventilated and dripproof construction.
- Vacuum-impregnated windings with fungus-resistant epoxy varnish for dependability and long life.
- Superior voltage waveform from a two-thirds pitch stator and skewed rotor.
- Fast-Response™ II brushless alternator with brushless exciter for excellent load response.

## Application Data

### Engine

Engine Specifications	60 Hz	50 Hz
Manufacturer	General Motors	
Engine: model, type	Industrial Powertrain Vortec 4.3 L, 4-Cycle Natural Aspiration	
Cylinder arrangement	V-6	
Displacement, L (cu. in.)	4.3 (262)	
Bore and stroke, mm (in.)	101.6 x 88.4 (4.00 x 3.48)	
Compression ratio	9.05:1	
Piston speed, m/min. (ft./min.)	318 (1044)	265 (870)
Main bearings: quantity, type	4, Babbitt	
Rated rpm	1800	1500
Max. power at rated rpm, kW (HP)	56 (75)	44.8 (60)
Engine power at standby rating, kW (HP)		
Natural Gas	41.9 (56)	40.3 (54)
LP Gas	45.3 (61)	42.5 (57)
Cylinder head material	Cast Iron	
Piston type and material	High Silicon Aluminum	
Crankshaft material	Nodular Iron	
Valve (exhaust) material	Forged Steel	
Governor type	Electronic	
Frequency regulation, no-load to full-load	Isochronous	
Frequency regulation, steady state	±0.5%	
Frequency	Fixed	
Air cleaner type, all models	Dry	

### Exhaust

Exhaust System	60 Hz	50 Hz
Exhaust manifold type	Dry	
Exhaust flow at rated kW, m <sup>3</sup> /min. (cfm)	8.8 (310)	7.4 (260)
Exhaust temperature at rated kW, dry exhaust, °C (°F)	649 (1200)	
Maximum allowable back pressure, kPa (in. Hg)	10.2 (3.0)	
Exhaust outlet size at engine hookup, mm (in.)	76 (3.0) OD	

### Engine Electrical

Engine Electrical System	60 Hz	50 Hz
Ignition system	Electronic, Distributor	
Battery charging alternator:		
Ground (negative/positive)	Negative	
Volts (DC)	12	
Ampere rating	70	
Starter motor rated voltage (DC)	12	
Battery, recommended cold cranking amps (CCA):		
Qty., rating for -18°C (0°F)	1, 630	
Battery voltage (DC)	12	

### Fuel

Fuel System	60 Hz	50 Hz
Fuel type	Natural Gas, LP Gas, or Dual Fuel	
Fuel supply line inlet	1 NPTF	
Natural gas fuel supply pressure, kPa (in. H <sub>2</sub> O)	1.74-2.74 (7-11)	
LPG vapor withdrawal fuel supply pressure, kPa (in. H <sub>2</sub> O)	1.24-2.74 (5-11)	
Dual fuel engine, LPG vapor withdrawal fuel supply pressure, kPa (in. H <sub>2</sub> O)	1.24 (5)	

Fuel Composition Limits *	Nat. Gas	LP Gas
Methane, % by volume	90 min.	—
Ethane, % by volume	4.0 max.	—
Propane, % by volume	1.0 max.	85 min.
Propene, % by volume	0.1 max.	5.0 max.
C <sub>4</sub> and higher, % by volume	0.3 max.	2.5 max.
Sulfur, ppm mass	25 max.	
Lower heating value, MJ/m <sup>3</sup> (Btu/ft <sup>3</sup> ), min.	33.2 (890)	84.2 (2260)

\* Fuels with other compositions may be acceptable. If your fuel is outside the listed specifications, contact your local distributor for further analysis and advice.



## Application Data

### Lubrication

Lubricating System	60 Hz	50 Hz
Type	Full Pressure	
Oil pan capacity, L (qt.)	4.3 (4.5)	
Oil pan capacity with filter, L (qt.)	5.7 (6.0)	
Oil filter: quantity, type	1, Cartridge	

### Cooling

Radiator System	60 Hz	50 Hz
Ambient temperature, °C (°F) *	50 (122)	
Engine jacket water capacity, L (gal.)	6.8 (1.8)	
Radiator system capacity, including engine, L (gal.)	19.7 (5.2)	
Engine jacket water flow, Lpm (gpm)	106.0 (28)	87.1 (23)
Heat rejected to cooling water at rated kW, dry exhaust, kW (Btu/min.)	39.2 (2230)	34.6 (1970)
Water pump type	Centrifugal	
Fan diameter, including blades, mm (in.)	533 (21)	
Fan, kWm (HP)	1.5 (2.0)	1.0 (1.2)
Max. restriction of cooling air, intake and discharge side of radiator, kPa (in. H <sub>2</sub> O)	0.125 (0.5)	

\* Enclosure with enclosed silencer reduces ambient temperature capability by 5°C (9°F).

### Operation Requirements

Air Requirements	60 Hz	50 Hz
Radiator-cooled cooling air, m <sup>3</sup> /min. (scfm) ‡	142 (5000)	113 (4000)
Combustion air, m <sup>3</sup> /min. (cfm)	2.61 (92)	2.20 (78)
Heat rejected to ambient air:		
Engine, kW (Btu/min.)	16.0 (910)	15.4 (860)
Alternator, kW (Btu/min.)	6.3 (360)	6.2 (350)

† Air density = 1.20 kg/m<sup>3</sup> (0.075 lbm/ft<sup>3</sup>)

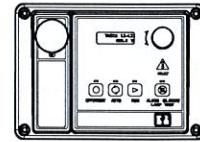
Fuel Consumption ‡	60 Hz	50 Hz
<b>Natural Gas, m<sup>3</sup>/hr. (cfh) at % load</b>	<b>Standby Ratings</b>	
100%	16.5 (584)	13.5 (477)
75%	13.8 (486)	10.4 (367)
50%	10.2 (360)	8.0 (281)
25%	7.7 (272)	5.8 (206)
<b>LP Gas, m<sup>3</sup>/hr. (cfh) at % load</b>	<b>Standby Ratings</b>	
100%	6.9 (242)	5.4 (190)
75%	5.4 (191)	4.2 (148)
50%	4.0 (141)	3.1 (111)
25%	2.9 (101)	2.3 (81)

‡ Nominal fuel rating: Natural gas, 37 MJ/m<sup>3</sup> (1000 Btu/ft.<sup>3</sup>)  
LP vapor, 93 MJ/m<sup>3</sup> (2500 Btu/ft.<sup>3</sup>)

LP vapor conversion factors:

8.58 ft.<sup>3</sup> = 1 lb.  
0.535 m<sup>3</sup> = 1 kg.  
36.39 ft.<sup>3</sup> = 1 gal.

### Controllers

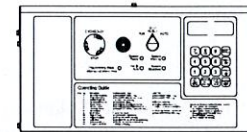


#### Decision-Maker® 3000 Controller

Provides advanced control, system monitoring, and system diagnostics for optimum performance and compatibility.

- Digital display and menu control provide easy local data access
- Measurements are selectable in metric or English units
- Remote communication thru a PC via network or serial configuration
- Controller supports Modbus® protocol
- Integrated hybrid voltage regulator with ±0.5% regulation
- Built-in alternator thermal overload protection
- NFPA 110 Level 1 capability

Refer to G6-100 for additional controller features and accessories.



#### Decision-Maker® 550 Controller

Provides advanced control, system monitoring, and system diagnostics with remote monitoring capabilities.

- Digital display and keypad provide easy local data access
- Measurements are selectable in metric or English units
- Remote communication thru a PC via network or modem configuration
- Controller supports Modbus® protocol
- Integrated voltage regulator with ±0.25% regulation
- Built-in alternator thermal overload protection
- NFPA 110 Level 1 capability

Refer to G6-46 for additional controller features and accessories.



KOHLER CO., Kohler, Wisconsin 53044 USA  
 Phone 920-457-4441, Fax 920-459-1646  
 For the nearest sales and service outlet in the  
 US and Canada, phone 1-800-544-2444  
 KohlerPower.com

Kohler Power Systems  
 Asia Pacific Headquarters  
 7 Jurong Pier Road  
 Singapore 619159  
 Phone (65) 6264-6422, Fax (65) 6264-6455

**Standard Features**

- Alternator Protection
- Battery Rack and Cables
- Electronic, Isochronous Governor
- Gas Fuel System (includes fuel mixer, electronic secondary gas regulator, gas solenoid valve, and flexible fuel line between the engine and the skid-mounted fuel system components)
- Integral Vibration Isolation
- Local Emergency Stop Switch
- Oil Drain Extension
- Operation and Installation Literature

**Available Options**

**Approvals and Listings**

- CSA Approval
- IBC Seismic Certification
- UL 2200 Listing

**Enclosed Unit**

- Sound Enclosure (with enclosed critical silencer)
- Weather Enclosure (with enclosed critical silencer)

**Open Unit**

- Exhaust Silencer, Critical (kit: PA-352663)
- Flexible Exhaust Connector, Stainless Steel

**Fuel System**

- Dual Fuel NG/LPG (automatic changeover)
- Flexible Fuel Line (required when the generator set skid is spring mounted)
- Gas Filter
- LP Liquid Withdrawal (vaporizer)
- Secondary Gas Solenoid Valve

**Controller**

- Common Fault Relay
- Communication Products and PC Software (Decision-Maker® 550 controller only)
- Customer Connection (Decision-Maker® 550 controller only)
- Dry Contact (isolated alarm) (Decision-Maker® 550 controller only)
- Input/Output Module (Decision-Maker® 3000 controller only)
- Remote Annunciator Panel
- Remote Audiovisual Alarm Panel (Decision-Maker® 550 controller only)
- Remote Emergency Stop
- Run Relay

**Cooling System**

- Block Heater, 1000 W, 110-120 V [recommended for ambient temperatures below 10°C (50°F)]
- Radiator Duct Flange

**Electrical System**

- Alternator Strip Heater
- Battery
- Battery Charger, Equalize/Float Type
- Battery Heater
- Line Circuit Breaker (NEMA1 enclosure)
- Line Circuit Breaker with Shunt Trip (NEMA1 enclosure)

**Miscellaneous**

- Air Cleaner Restrictor Indicator
- Certified Test Report
- Engine Fluids (oil and coolant) Added
- Rated Power Factor Testing
- Rodent Guards

**Literature**

- General Maintenance
- NFPA 110
- Overhaul
- Production

**Warranty**

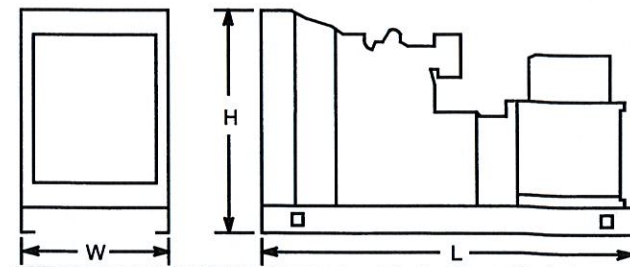
- 2-Year Basic
- 5-Year Basic
- 5-Year Comprehensive

**Other Options**

- 
- 
- 
- 
- 
- 
- 
- 

**Dimensions and Weights**

Overall Size, L x W x H, mm (in.):  
 Wide Skid 2200 x 1040 x 1172 (86.6 x 40.9 x 46.1)  
 Narrow Skid 2200 x 864 x 1172 (86.6 x 34.0 x 46.1)  
 Weight (radiator model), wet, kg (lb.): 556 (1225)



NOTE: This drawing is provided for reference only and should not be used for planning installation. Contact your local distributor for more detailed information.

**DISTRIBUTED BY:**