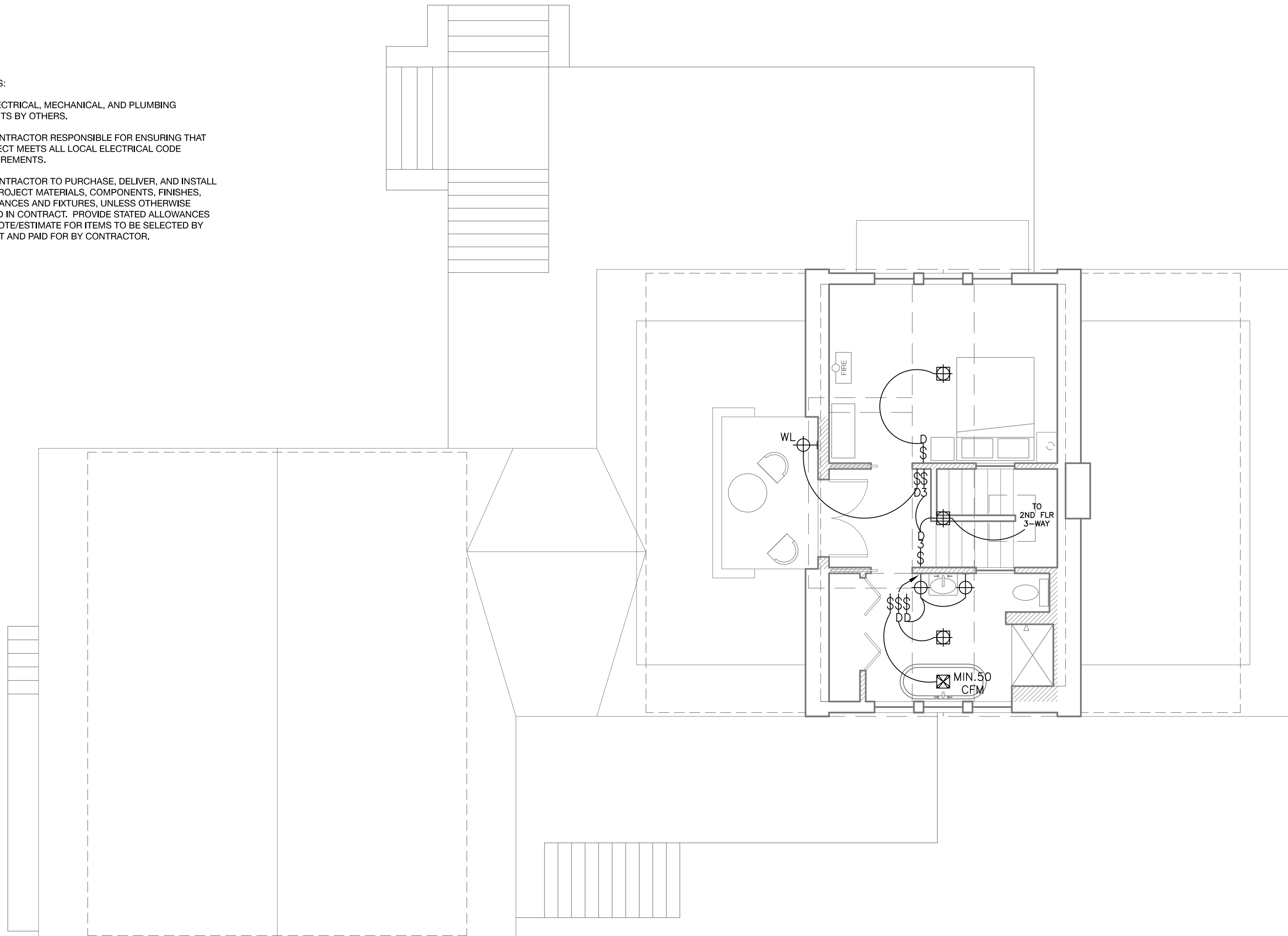


NOTES:

- 1.) ELECTRICAL, MECHANICAL, AND PLUMBING PERMITS BY OTHERS.
- 2.) CONTRACTOR RESPONSIBLE FOR ENSURING THAT PROJECT MEETS ALL LOCAL ELECTRICAL CODE REQUIREMENTS.
- 3.) CONTRACTOR TO PURCHASE, DELIVER, AND INSTALL ALL PROJECT MATERIALS, COMPONENTS, FINISHES, APPLIANCES AND FIXTURES, UNLESS OTHERWISE NOTED IN CONTRACT. PROVIDE STATED ALLOWANCES IN QUOTE/ESTIMATE FOR ITEMS TO BE SELECTED BY CLIENT AND PAID FOR BY CONTRACTOR.



**Rachel Conly**  
 Archtitectural Design  
 26 Sterling Street  
 Peaks Island, Maine 04108  
 207.766.5625

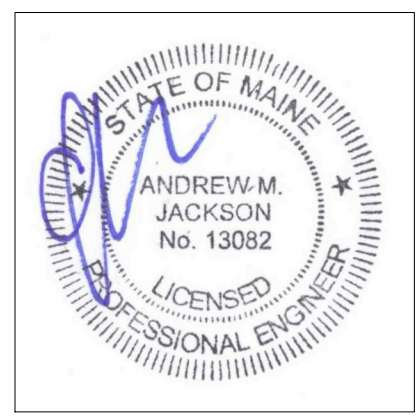
DATE	NOTES
2015.10.28	
REVISION	

3/16" = 1'

**Konzal Residence**  
 5 City Point Rd.  
 Peaks Island, ME  
 04108

**A Proposed Third Floor Lighting Plan**

- |   |   |   |   |   |  |   |
|---|---|---|---|---|--|---|
| <p>NOTES:</p> <ul style="list-style-type: none"> <li>⊕ DUPLEX RECEPTACLE</li> <li>⊕ GFI GROUND FAULT CIRCUIT INTERRUPTER</li> <li>⊕ 240 V</li> <li>⊕ 240</li> <li>⊕ SWITCH</li> </ul> | <ul style="list-style-type: none"> <li>⊕ 3-WAY SWITCH</li> <li>⊕ DIMMER SWITCH</li> <li>⊕ SD SMOKE DETECTOR</li> <li>⊕ CO CARBON MONOXIDE DETECTOR</li> </ul> | <ul style="list-style-type: none"> <li>⊕ CEILING MOUNT LIGHT FIXTURE</li> <li>⊕ WALL SCONCE LIGHT FIXTURE</li> <li>⊕ LOW PROFILE WALL SCONCE LIGHT FIXTURE</li> <li>⊕ WET LOCATION WALL SCONCE LIGHT FIXTURE</li> </ul> | <ul style="list-style-type: none"> <li>⊕ PENDANT LIGHT FIXTURE</li> <li>⊕ RC RECESSED CAN LIGHT FIXTURE</li> <li>⊕ FC COMPACT FLUORESCENT RECESSED CAN LIGHT</li> <li>⊕ ED 3" LED RECESSED CAN LIGHT</li> </ul> | <ul style="list-style-type: none"> <li>— UNDER-COUNTER LIGHTS</li> <li>— TRACK LIGHTING</li> <li>— LOCALLY SWITCHED CLOSET RATED LIGHT</li> </ul> | <ul style="list-style-type: none"> <li>⊕ CEILING FAN WITH INTEGRAL LIGHT</li> <li>⊕ CEILING FAN</li> <li>⊕ MINIMUM 50 CFM VENT FAN</li> <li>⊕ MINIMUM 50 CFM VENT FAN/LIGHT COMBO</li> </ul> | <ul style="list-style-type: none"> <li>⊕ PHONE JACK</li> <li>⊕ DSL DSL JACK</li> <li>⊕ C CABLE JACK</li> <li>⊕ CS CAT 5 JACK</li> <li>⊕ CV CENTRAL VACUUM PORT</li> </ul> |
|---|---|---|---|---|--|---|



**E6**

Proposed  
 Third Floor  
 Lighting Plan