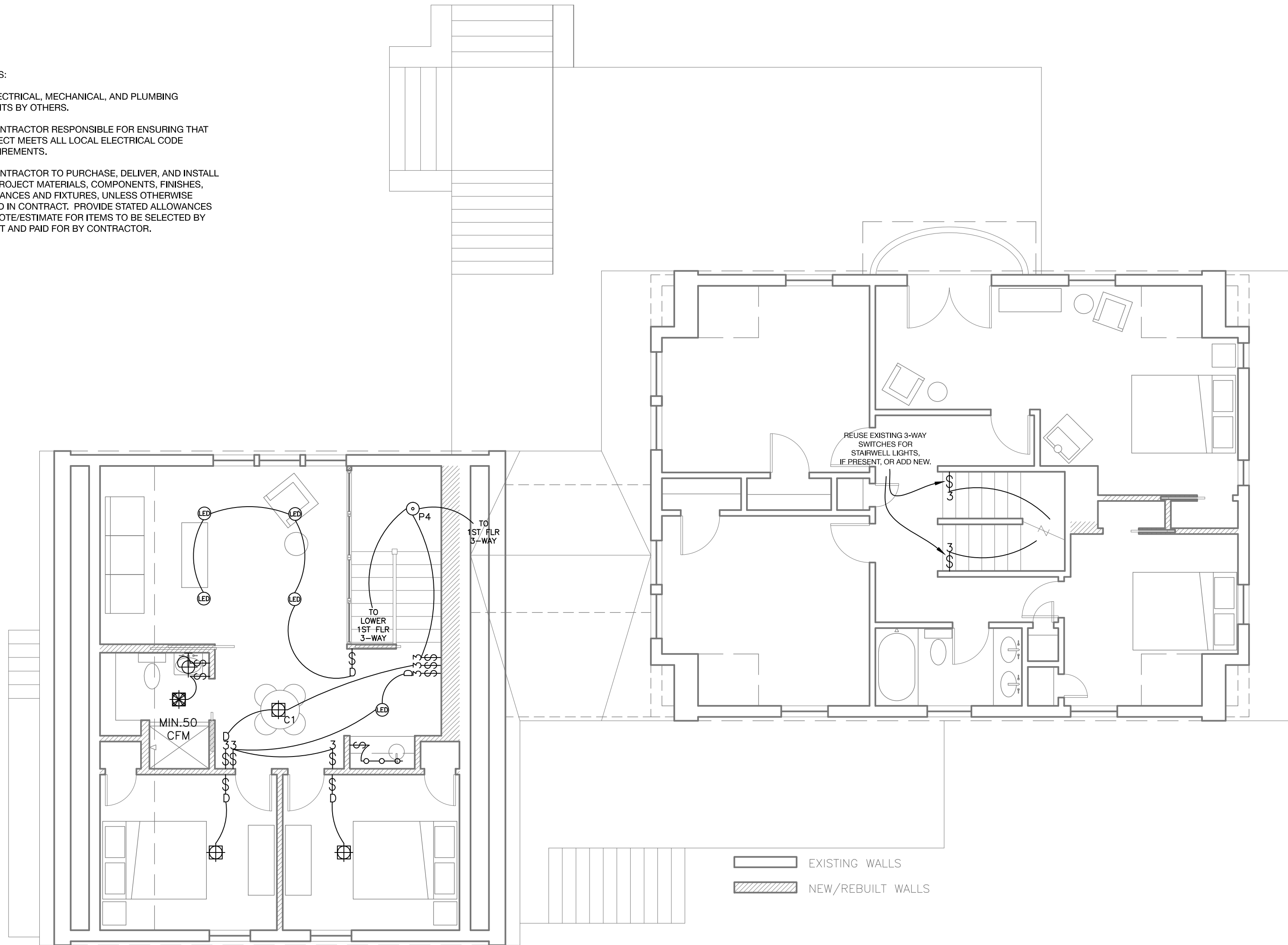


NOTES:

1.) ELECTRICAL, MECHANICAL, AND PLUMBING PERMITS BY OTHERS.

2.) CONTRACTOR RESPONSIBLE FOR ENSURING THAT PROJECT MEETS ALL LOCAL ELECTRICAL CODE REQUIREMENTS.

3.) CONTRACTOR TO PURCHASE, DELIVER, AND INSTALL ALL PROJECT MATERIALS, COMPONENTS, FINISHES, APPLIANCES AND FIXTURES, UNLESS OTHERWISE NOTED IN CONTRACT. PROVIDE STATED ALLOWANCES IN QUOTE/ESTIMATE FOR ITEMS TO BE SELECTED BY CLIENT AND PAID FOR BY CONTRACTOR.



Rachel Conly
Architectural Design
26 Sterling Street
Peaks Island, Maine 04108
207.766.5625

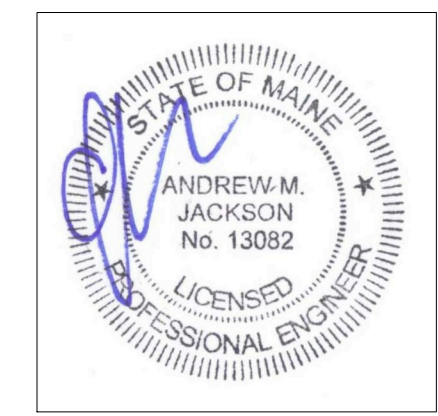
DATE	NOTES
2015.10.28	
	REVISED
3/16" = 1'	

Konzal Residence
5 City Point Rd.
Peaks Island, ME
04108

A Proposed Second Floor Lighting Plan

NOTES:

- | | | | | | | | | | | | | | |
|------|----------------------------------|-----|--------------------------|-----|--|------|--|---------|-------------------------------------|---|-------------------------------------|------|---------------------|
| ⊕ | DUPLEX RECEPTACLE | ⋈ | 3-WAY SWITCH | ⊕ | CEILING MOUNT LIGHT FIXTURE | ⊙ | PENDANT LIGHT FIXTURE | —○—○— | UNDER-COUNTER LIGHTS | ⊗ | CEILING FAN WITH INTEGRAL LIGHT | Δ | PHONE JACK |
| ⊕GFI | GROUND FAULT CIRCUIT INTERRUPTER | ⋈ | DIMMER SWITCH | ⊕ | WALL SCONCE LIGHT FIXTURE | ⊙RC | RECESSED CAN LIGHT FIXTURE | —Δ—Δ—Δ— | TRACK LIGHTING | ⊗ | CEILING FAN | ΔDSL | DSL JACK |
| ⊕240 | 240 V | ⊠SD | SMOKE DETECTOR | ⊕ | LOW PROFILE WALL SCONCE LIGHT FIXTURE | ⊙FC | COMPACT FLUORESCENT RECESSED CAN LIGHT | ⊕ | LOCALLY SWITCHED CLOSET RATED LIGHT | ⊗ | MINIMUM 50 CFM VENT FAN | ΔC | CABLE JACK |
| ⋈ | SWITCH | ⊠CO | CARBON MONOXIDE DETECTOR | ⊕WL | WET LOCATION WALL SCONCE LIGHT FIXTURE | ⊙LED | 3" LED RECESSED CAN LIGHT | ⊕ | | ⊗ | MINIMUM 50 CFM VENT FAN/LIGHT COMBO | ⊠CS | CAT 5 JACK |
| | | | | | | | | | | ⊗ | | ⊠CV | CENTRAL VACUUM PORT |



E4

Proposed
Second Floor
Lighting Plan