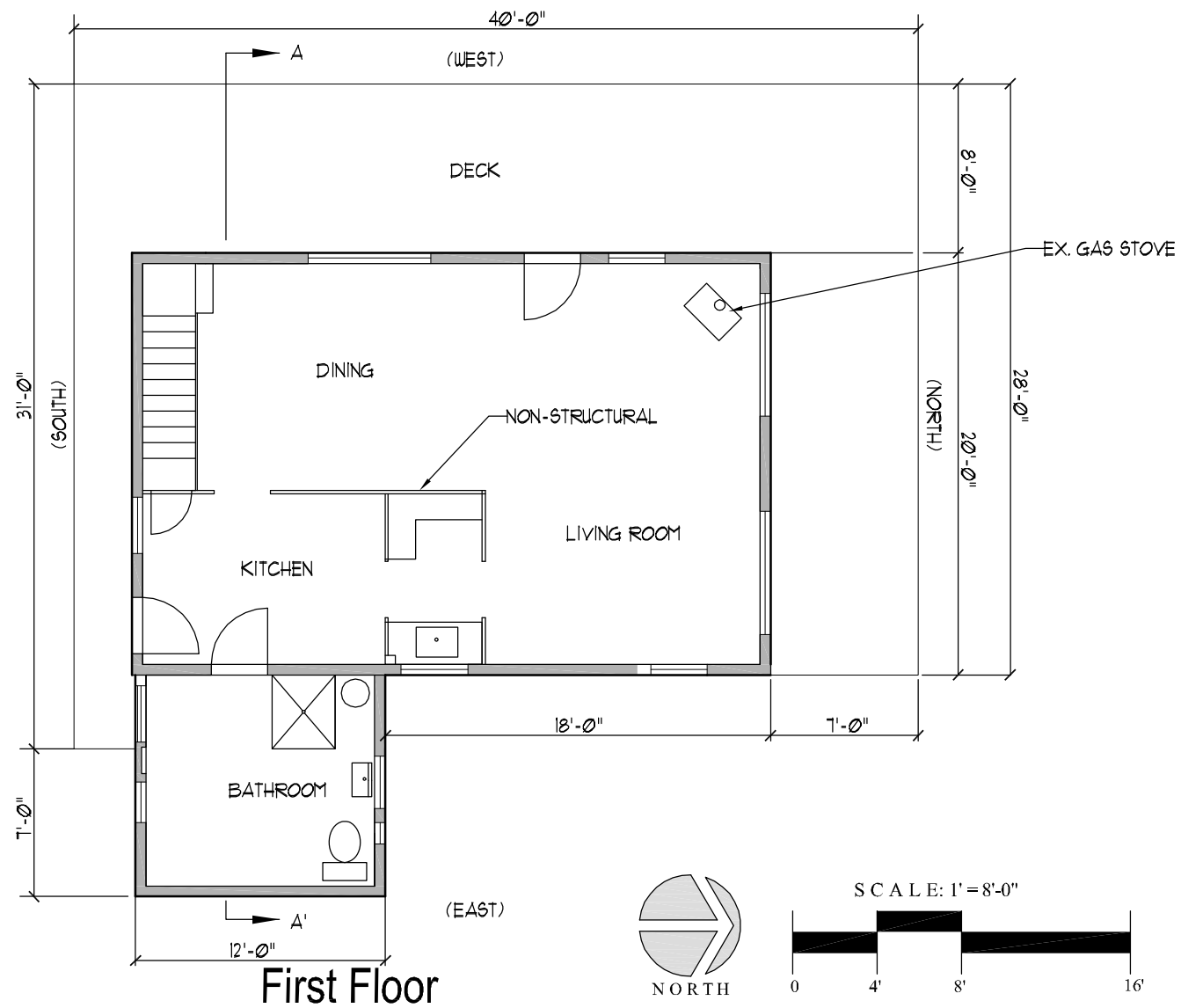
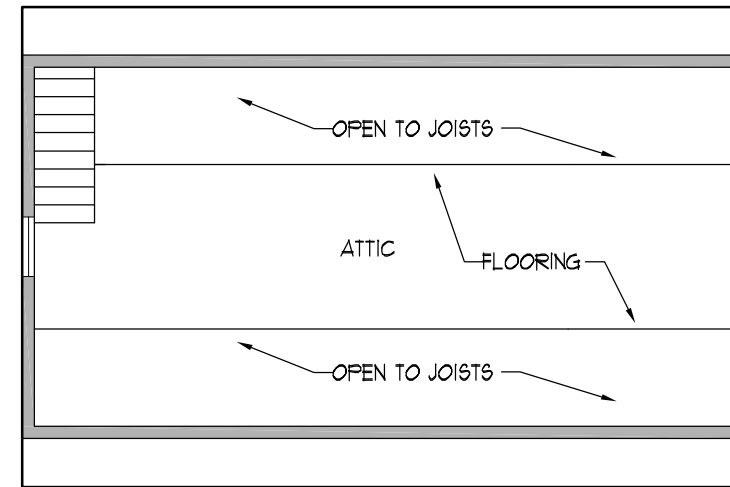


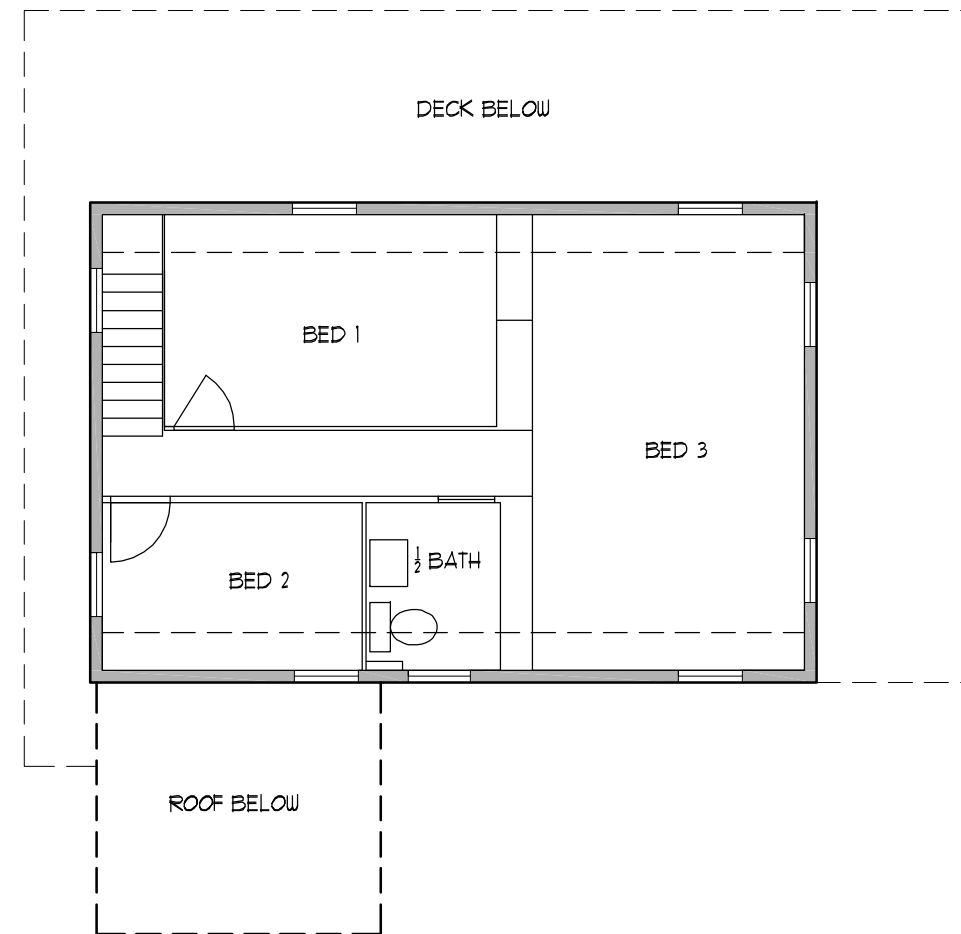
Section A - A'



First Floor



Third Floor



Second Floor

TITLE: Existing Conditions
EXHIBIT: A-1.0

Robinson Cottage
2 City Point Road
Peaks Island, Maine
SCALE: As Shown
DATE: 4/16/2015

MOHR & SHERIDIN
Landscape Architects, Inc.
18 Pleasant Street, Portland, Maine 04101
ph: 1.207.871.0003
fax: 1.207.871.1419