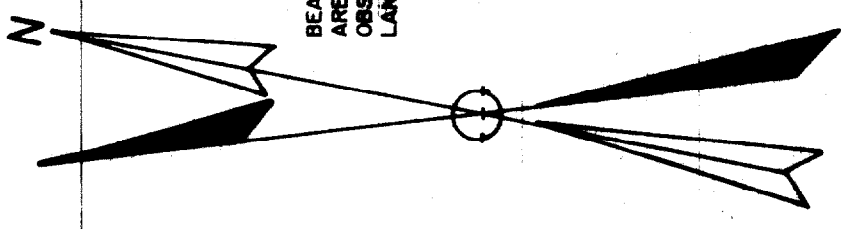




JAMES K. GILSON
 ISLAND AVENUE
 PEAKS ISLAND, PORTLAND, MAINE

PREPARED FOR
 AREA OF OVERLAP
 PLAN SHOWING



BEARINGS AS STATED ON THIS PLAN
 ARE REFERRED TO MAGNETIC NORTH
 OBSERVED JULY 1992 BY
 LAND USE CONSULTANTS, INC.

67
 27

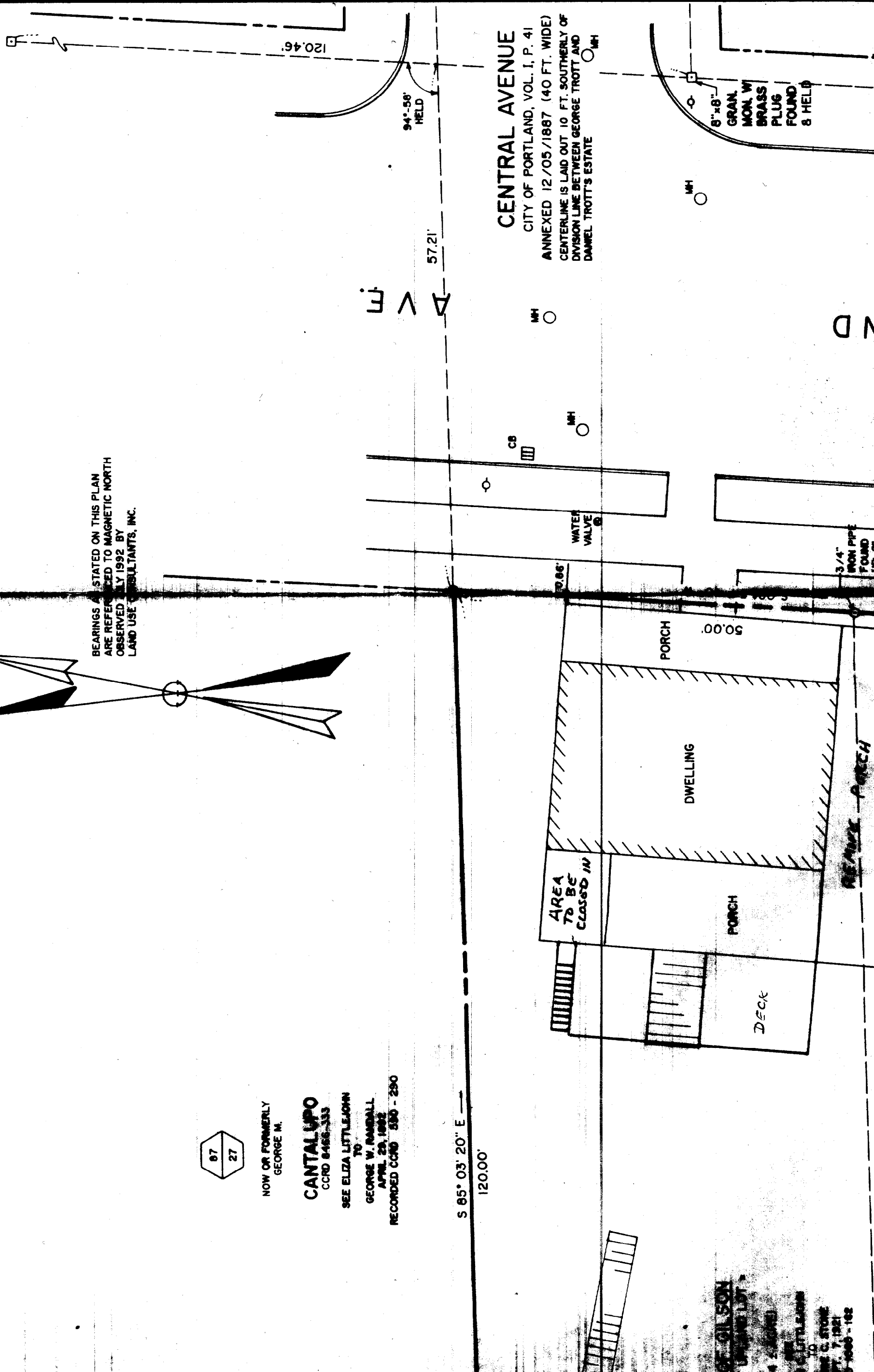
NOW OR FORMERLY
 GEORGE M.

CANTALUPO
 CCRO 84166-333

SEE ELIZA LITTLEJOHN
 TO
 GEORGE W. RANDALL
 APRIL 29, 1862

RECORDED CCRO 550 - 290

S 65° 03' 20" E
 120.00'



JAMES K. GILSON
 LAND SURVEYOR
 104 2-2000
 TO
 ELIZA LITTLEJOHN
 GEORGE W. RANDALL
 APRIL 29, 1862
 CCRO 550 - 290