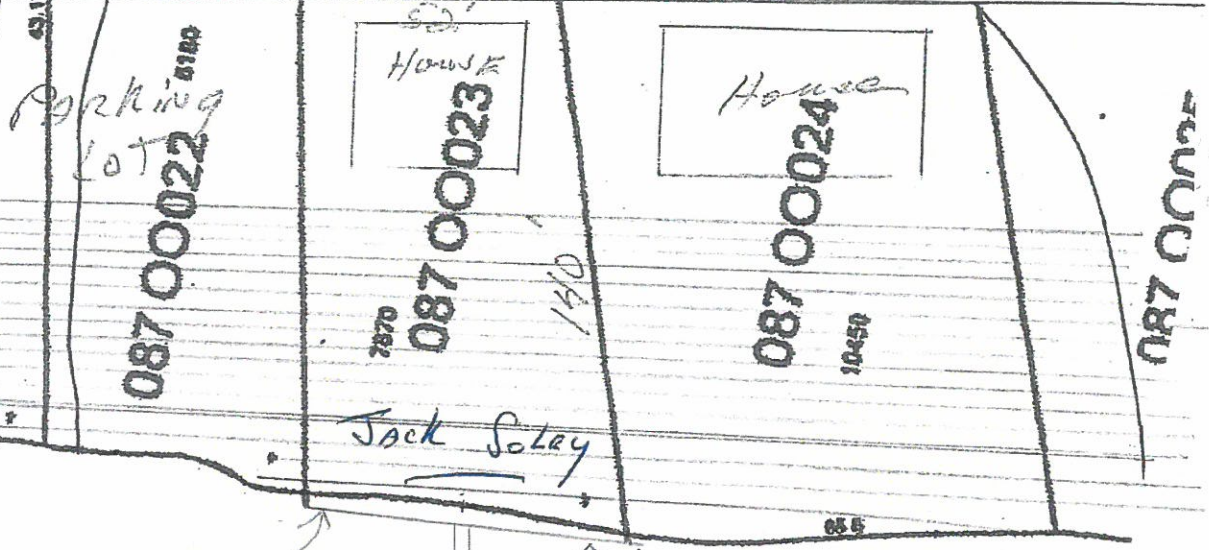
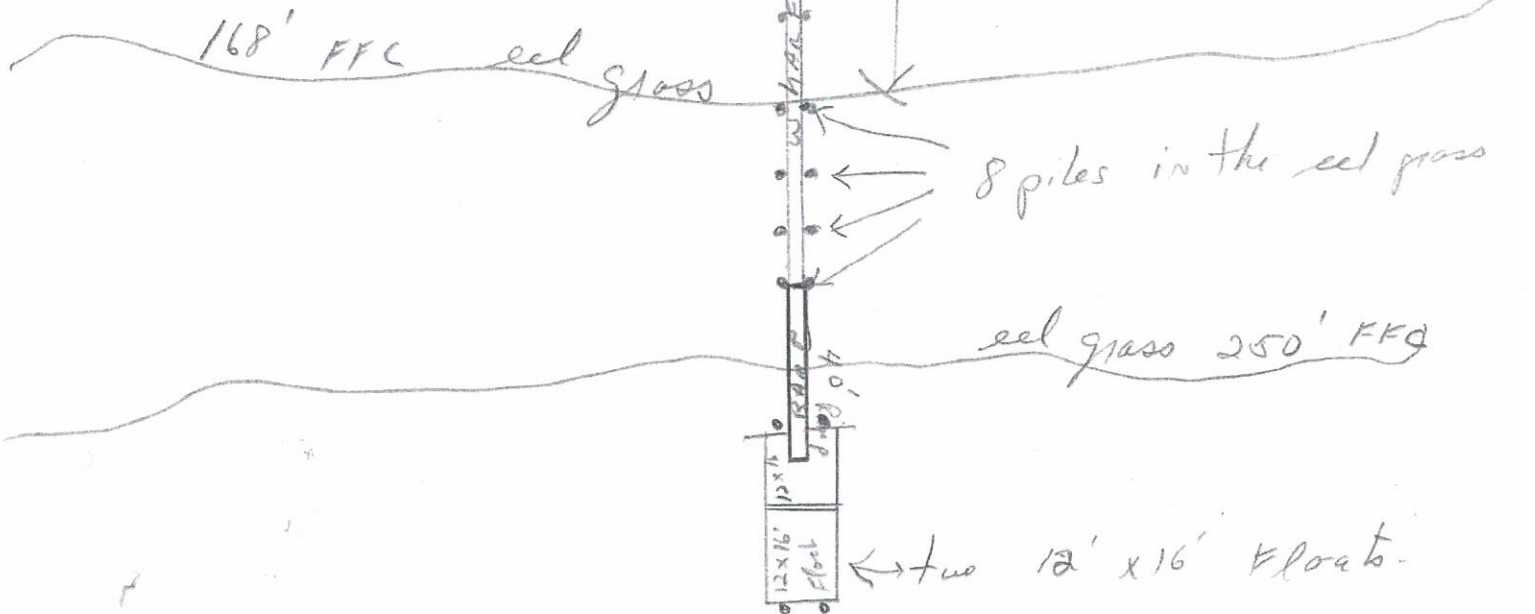


out on Lines
 0.000000
 30'
 01.00



FACE OF CONCRETE WALL

Wharf	-	230'
Ramp	-	40'
2 Floats	-	36'
Total Length	→	306'
	-	10'
minus slope on Ramp ↓		
		<u>296' LF</u>



FFC - From Face of Concrete wall

Final Plan

NOT TO SCALE

DEP Permit # L 271574PBN