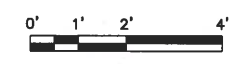


FIRE SUPPRESSION PLAN

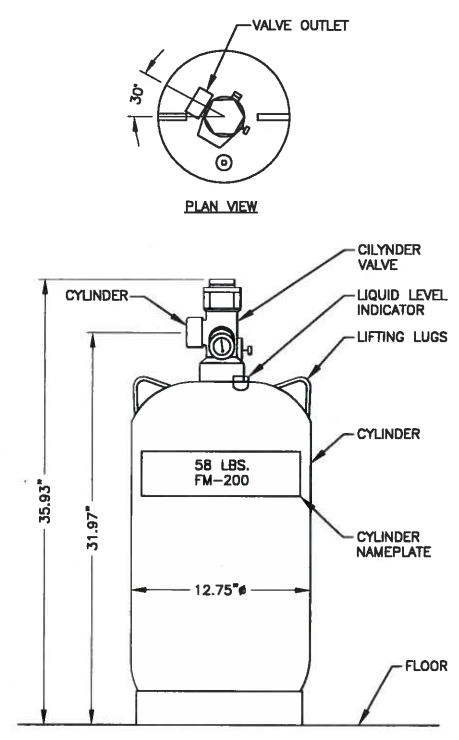
SCALE: 1/4"=1' FOR 11"x17"
1/2"=1' FOR 22"x34"



| BILL OF MATERIALS | |
|-------------------|--|
| 45 | FM 200 SYSTEM SMOKE DETECTOR - IONIZATION 120V/12V WITH RELAY * |
| 46 | FM 200 SYSTEM SMOKE DETECTOR - PHOTOELECTRIC WITH RELAY 120V/12V * |
| 47 | GAS EVACUATION DAMPER |
| 48 | FM 200 SYSTEM CEILING/WALL MOUNT FIRE STROBE/ HORN * |
| 49 | FM 200 SYSTEM FIRE DEPARTMENT LOCKABLE SWITCH * |
| 50 | FM 200 SYSTEM FIRE ALARM/SUPPRESSION CONTROL PANEL * |
| 51 | FM 200 SYSTEM ELECTRIC REMOTE CONTROL (PULL STATION) * |
| 52 | 450 CFM, 1/4 HP, 120/1/60 PURGE FAN * |
| 53 | FM 200 SYSTEM ABORT SWITCH SWITCH - CONSTANT PRESSURE TYPE * |
| 54 | FM 200 SYSTEM 70# FM 200 CYLINDER * |
| 55 | FM 200 SYSTEM 180° DISCHARGE NOZZLE * |
| 56 | EXHAUST AIR LOUVER - GREENHECK MODEL EDD-45 |
| 57 | TRANSFER AIR GRILLE, 45° DEFLECTION |
| 58 | 10LB CO2 FIRE EXTINGUISHER, MOUNTING BRACKET AND SIGNAGE |

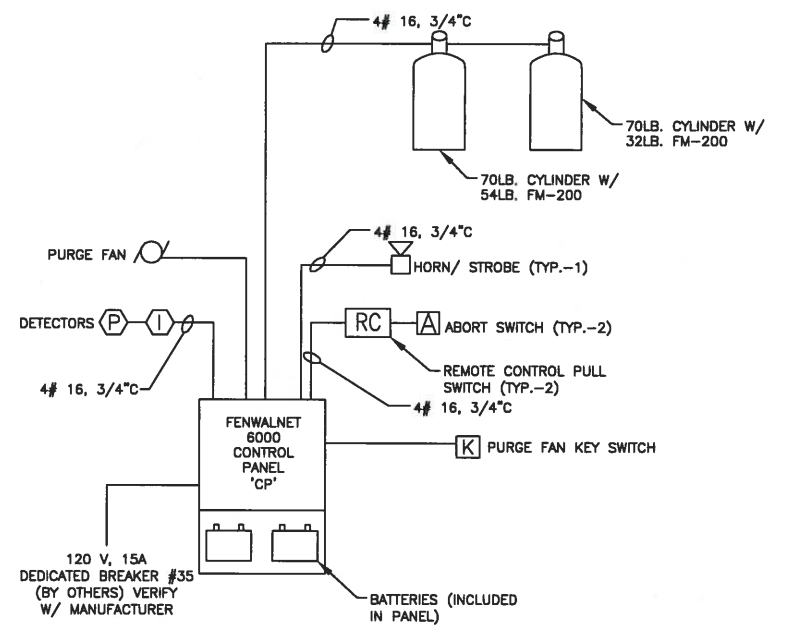
* ALL FM 200 FIRE SUPPRESSION SYSTEM EQUIPMENT TO INTERFACE WITH THE FENWALNET 6000 BY FENWAL PROTECTION SYSTEMS (OR APPROVED EQUAL). CONTRACTOR TO VERIFY ALL PART NUMBERS PRIOR TO PURCHASE.

| LEGEND | |
|--------|---|
| (P) | - PHOTO ELECTRIC SMOKE DETECTOR |
| (I) | - IONIZATION SMOKE DETECTOR |
| (A) | - ABORT STATION - CONSTANT PRESSURE TYPE (MOUNTING HT. 4'-0" MAX.) |
| (O) | - 70 LB. CYLINDER |
| (N) | - 90° NOZZLE |
| (M) | - 180° NOZZLE |
| (CP) | - FM-200 CONTROL PANEL |
| (RC) | - ELECTRIC REMOTE CONTROL PULL STATION |
| (S) | - STROBE/ HORN WITH MANUAL PULL STATION BELOW (MOUNTING HT. 7'-0" MAX.) |
| (K) | - KEY SWITCH |
| (WP) | - WEATHERPROOF |
| (G) | - BREAK GLASS EMERGENCY GENERATOR GAS SHUT DOWN UNIT |



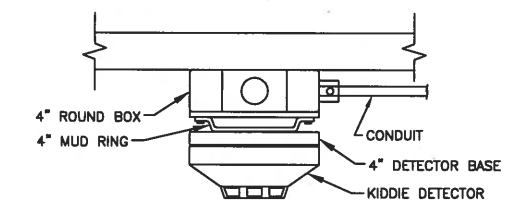
MOUNTING DETAIL FOR 70 LB CONTAINER

SCALE: N.T.S.



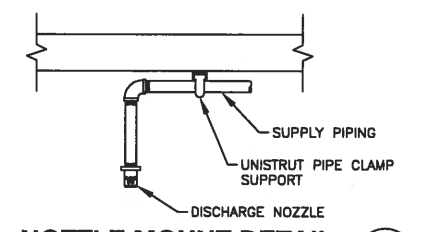
TYPICAL CONTROL PANEL RISER DIAGRAM

SCALE: N.T.S.



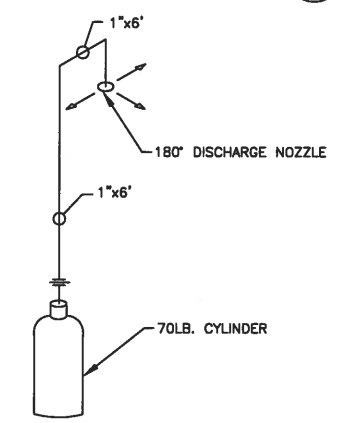
4" DETECTOR & BASE DETAIL

SCALE: N.T.S.



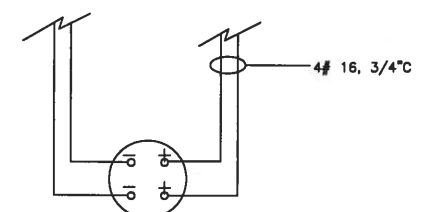
NOZZLE MOUNT DETAIL

SCALE: N.T.S.



ISOMETRIC PIPING DETAIL

SCALE: N.T.S.



DETECTOR SCHEMATIC

SCALE: N.T.S.

| FM - 200 CALCULATION | | | | | | | | |
|----------------------|-----------------|---------|-----------|-----------------|-----------------|----------------|----------------|----------------|
| HAZARD | DESIGN TEMP. OF | SQ. FT. | ROOM VOL. | % CONCENTRATION | FLOODING FACTOR | TOTAL REQUIRED | TOTAL PROVIDED | CONTAINER SIZE |
| EQUIPMENT ROOM | 70° | 165 | 1568 | 7% | 0.0341 | 54 LB. | 54 LB. | 70 LBS CYL. |
| GENERATOR ROOM | 70° | 97 | 922 | 7% | 0.0341 | 32 LB. | 32 LB. | 70 LBS CYL. |

NOTES:

- OVERALL INTERIOR HEIGHT: 9'-6"± AT HIGHEST POINT. 9'-6" HEIGHT USED FOR ROOM VOLUME CALCULATION.
- ALL PROPOSED INTERIOR EQUIPMENT LOCATIONS TO BE FIELD VERIFIED PRIOR TO FM-200 SYSTEM INSTALLATION.
- A.F.F. - ABOVE FINISHED FLOOR.
- FENWALNET 6000 FIRE ALARM/SUPPRESSION CONTROL PANEL BY FENWAL FIRE PROTECTION SYSTEMS. CONTRACTOR TO CONTACT ADVANCED SAFETY SYSTEMS FOR ORDERING INFORMATION @ (978) 532-5737.
- FIRE ALARM/SUPPRESSION SYSTEM TO BE TIED INTO MAIN SHELTER CIRCUIT BREAKER & INSTALLED PER MANUFACTURER'S RECOMMENDATIONS.
- HVAC DAMPERS TO CLOSE UPON ALARM SIGNAL. INSTALL DAMPERS PER MANUFACTURER RECOMMENDATIONS OR VOLUME OF CYLINDERS MUST BE INCREASED.
- ALL ITEMS SHOWN SCHEMATICALLY, CONTRACTOR TO FIELD VERIFY LOCATION OF EACH ITEM. SMOKE DETECTORS & NOZZLE DISCHARGE PATH SHOULD BE CLEAR OF OBSTRUCTIONS. LOCATION OF FIRE PANEL AND ABORT SWITCHES SHOULD ALLOW EQUIPMENT ROOM TO OPERATE PROPERLY.
- SIGN ON DOOR TO READ: "CAUTION SHELTER PROTECTED BY FM-200 FIRE ALARM/SUPPRESSION SYSTEM. DO NOT ENTER UNTIL VENTILATED". "CONTACT PORTLAND FIRE DEPARTMENT IN CASE OF EMERGENCY".
- EXHAUST FAN & INTAKE LOUVERS TO BE TIED INTO MAIN SHELTER CIRCUIT BREAKER PER MANUFACTURER'S RECOMMENDATIONS.

VERIZON WIRELESS
400 FRIBERG PARKWAY
WESTBOROUGH, MA 01581-3956

PORTLAND 6 ME

| CONSTRUCTION DRAWINGS | | |
|-----------------------|----------|---------------|
| 2 | 09/23/14 | FOR SUBMITTAL |
| 1 | 08/25/14 | FOR SUBMITTAL |
| A | 08/18/14 | FOR COMMENT |

Dewberry Engineers Inc.
280 SUMMER STREET
10TH FLOOR
BOSTON, MA 02210
PHONE: 617.685.5400
FAX: 617.685.3310

| | |
|-----------------|----------|
| DRAWN BY: | SK |
| REVIEWED BY: | MFT |
| CHECKED BY: | BBR |
| PROJECT NUMBER: | 50002925 |
| JOB NUMBER: | 50062235 |
| SITE ADDRESS | |

25 CHURCH AVE
PEAKS ISLAND, ME 04108

SHEET TITLE

FIRE SUPPRESSION PLAN

SHEET NUMBER

FS-1