

9RLS2 Submittal

AOI9RLS2, ASU9RLS2
Inverter Driven Heat Pump



Job Name: Carla Shaiken Approval: _____
 Location: 71 Brackett Avenue, Peaks Island Date: _____
 Engineer: n/a 04108 Construction: _____
 Submitted to: City of Portland Unit #: _____
 Submitted by: Hoggin Energy Drawing #: _____
 Reference: n/a

Outdoor Unit Power 208-230VAC-1Ph-60Hz
 Available Voltage Range 187-253VAC
 Fuse Size, Max. 20A
 MCA 10.5A

Compressor Inverter Driven Variable Speed DC Rotary
 No. Used 1
 Output 850W
 Lubricant Oil POE (RB68)
Fan type Propeller
 Motor Output 115W
 Airflow Rate Cooling/Heating (High) 1082 / 1840CFM

Refrigerant 410A
 Outdoor Unit 2lbs 10oz
 Control Electronic Expansion Valve
 O.D. Discharge (in) 1/4" (Flare)
 O.D. Suction (in) 3/8" (Flare)

Dimensions H x W x D
 Uncrated (in) 24-1/2 x 31-3/32 x 11-11/32
 (mm) (620 x 790 x 290)
 Crated (in) 28-1/16 x 37-7/32 x 15-9/16
 (mm) (713 x 945 x 395)

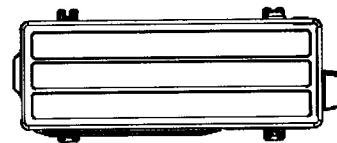
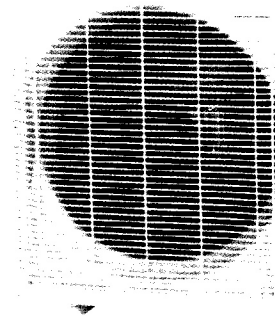
Weight Outdoor
 Net 84lbs (38kg)
 Gross Shipping 93lbs (42kg)

Cooling
 Rated Capacity 9,000BTU/h
 Min-Max Capacity 3,100-12,000BTU/h
 Rated Power Input 2.64kw
 Max. Power Input 3.60kw
 SEER 27.2
 Outdoor Sound Rating 48dB

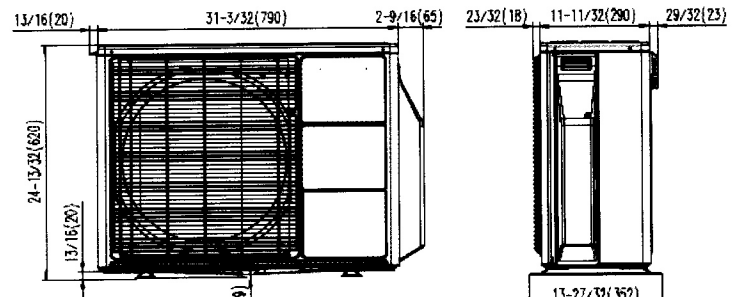
Heating
 Rated Capacity 12,000BTU/h
 Min-Max Capacity 3,100-22,000BTU/h
 Rated Power Input 3.52kw
 Max. Power Input 6.45kw
 HSPF 12.5
 Outdoor Sound Rating 49dB

Piping Lengths
 Max. Piping Length (Total) 66ft
 Max. Pipe Height Difference 49ft
 Connection method (Flared)

Operating Range
 Cooling 14°F~115°F DB
 Heating -5°F~75°F DB

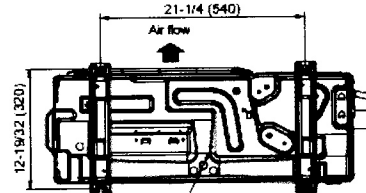


Top view

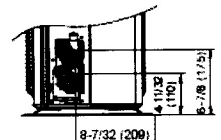


Front view

Side view



Bottom view



Fujitsu General America, Inc.
 Fairfield, NJ 07004
 Toll Free: 1-888-888-3424
 Fax: (973) 836-0447
 www.fujitsugeneral.com

Fujitsu products are subject to continuous improvements. Fujitsu reserves the right to modify product design, specifications and information in this data sheet without notice and without incurring any obligations.

Note: Specifications are based on the following conditions.

Power source of specifications : 230V

Cooling: Indoor temperature of 80°F(26.67°C)DB / 67°F(19.44°C)WB, and outdoor temperature of 95°F(35°C)DB/75°F(23.89°C)WB.

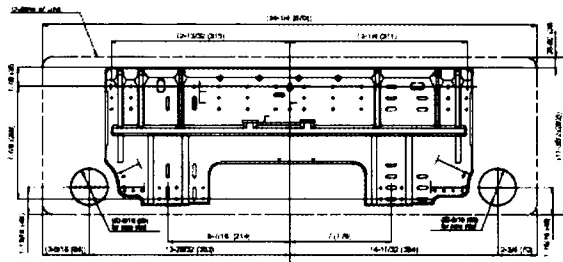
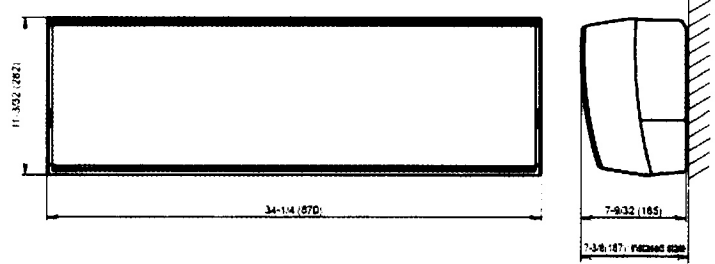
Heating: Indoor temperature of 70°F(21.11°C)DB / 60°F(15.56°C)WB, and outdoor temperature of 47°F(8.33°C)DB/43°F(6.11°C)WB.

Pipe length : 24ft.(7.5m), Height difference : 0 ft.(0m) [Outdoor unit - Indoor unit]





Indoor Unit Power	208-230VAC-1Ph-60Hz	
Available Voltage Range	187-253VAC	
Fan type	Cross flow	
Motor Output	29W	
MCA	0.4A	
Sound Pressure Level		
Cooling	Lo-Hi	21-43dB
Heating	Lo-Hi	21-43dB
Airflow rate		
Cooling	Lo-Hi	194-500dB
Heating	Lo-Hi	194-500dB
Dimensions H x W x D		
Uncrated	(in)	11-3/32 x 34-1/4 x 7-9/32
	(mm)	(282 x 870 x 185)
Crated	(in)	9-23/32 x 36-7/32 x 14-11/16
	(mm)	(247 x 920 x 373)
Weight Indoor		
Net	21lbs (9.5kg)	
Gross Shipping	27lbs (12kg)	



Fujitsu General America, Inc.
 Fairfield, NJ 07004
 Toll Free: 1-888-888-3424
 Fax: (973) 836-0447
 www.fujitsugeneral.com

Fujitsu products are subject to continuous improvements. Fujitsu reserves the right to modify product design, specifications and information in this data sheet without notice and without incurring any obligations.

