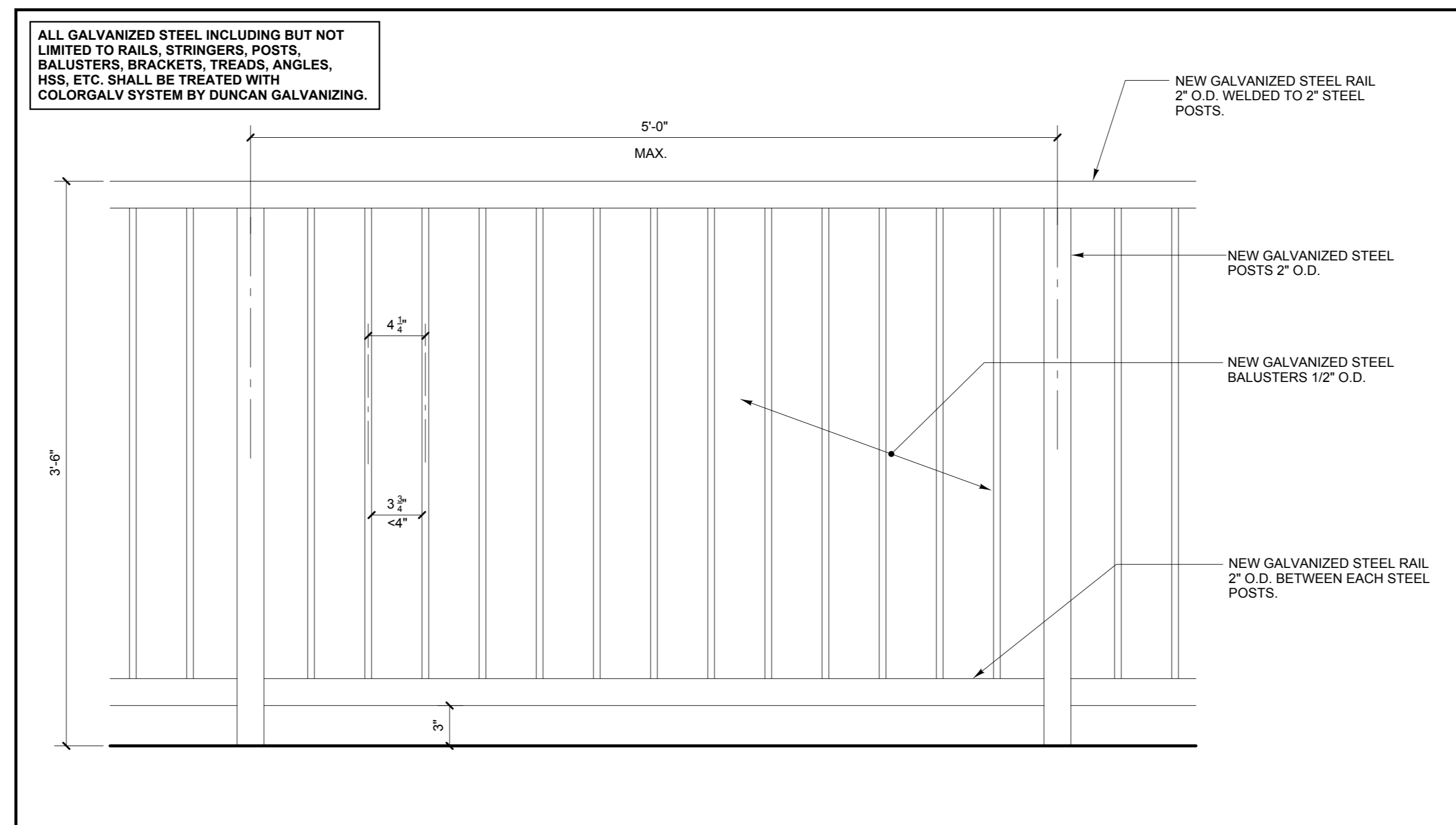
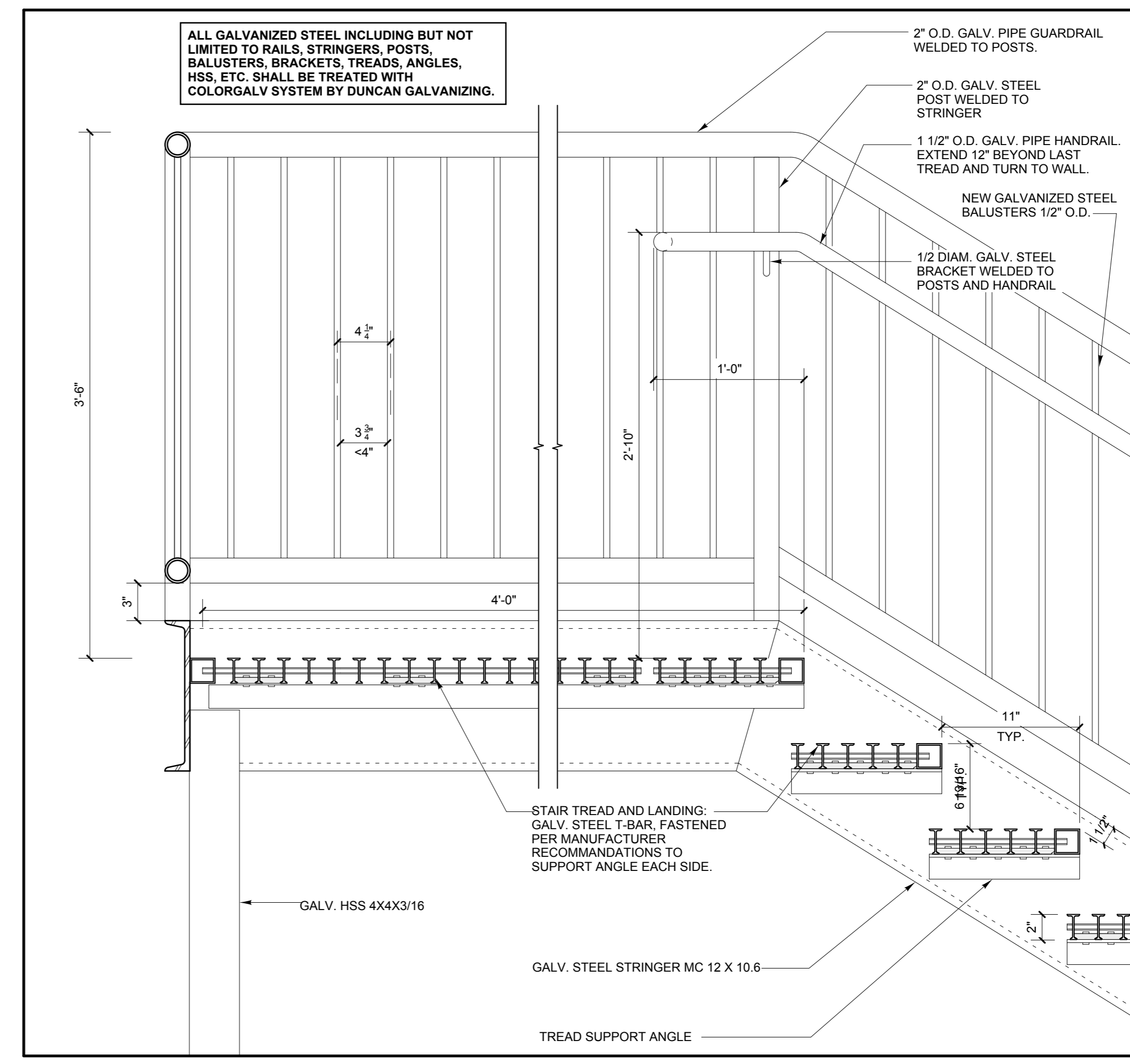


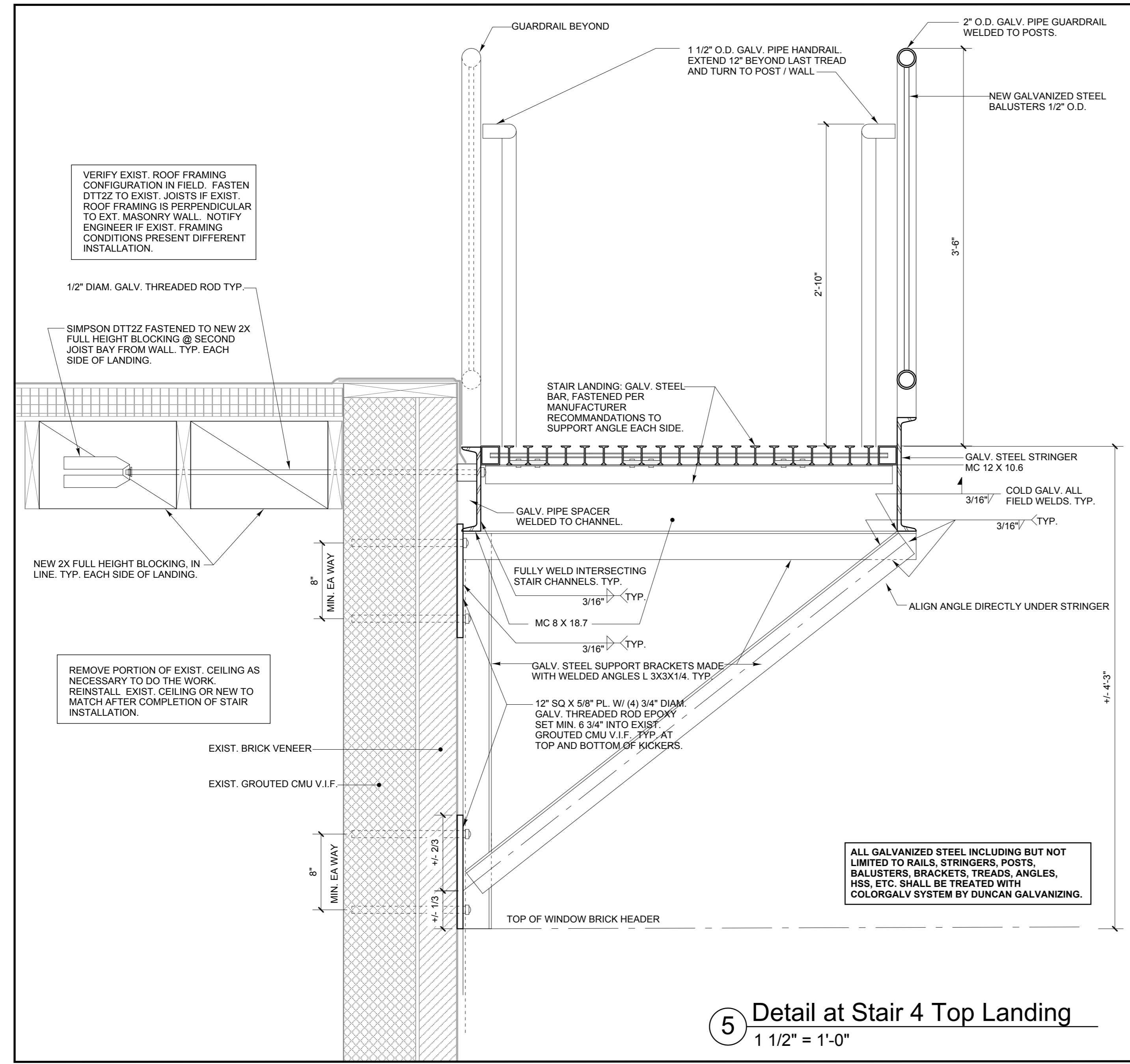
3 Typical Steel Stair Detail at Bottom
1 1/2" = 1'-0"



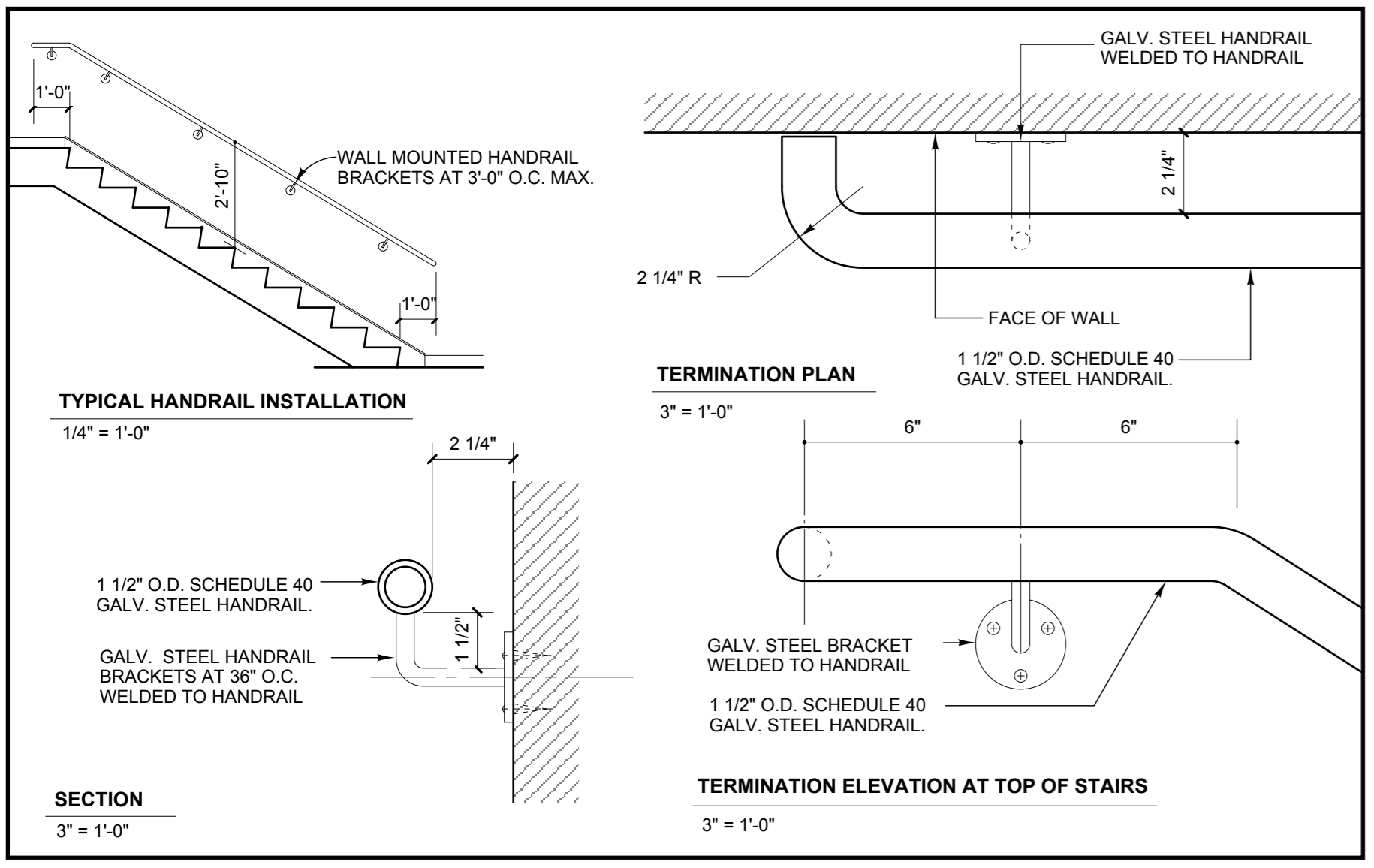
2 Typical Wall Guardrail Elevation
1 1/2" = 1'-0"



4 Typical Steel Stair Detail at Top Landing
1 1/2" = 1'-0"



5 Detail at Stair 4 Top Landing
1 1/2" = 1'-0"



1 Typical Wall Mounted Handrail Details
Scale: as indicated

ALL GALVANIZED STEEL INCLUDING BUT NOT LIMITED TO RAILS, STRINGERS, POSTS, BALUSTERS, BRACKETS, TREADS, ANGLES, HSS, ETC. SHALL BE TREATED WITH COLORGALV SYSTEM BY DUNCAN GALVANIZING.

ALL GALVANIZED STEEL INCLUDING BUT NOT LIMITED TO RAILS, STRINGERS, POSTS, BALUSTERS, BRACKETS, TREADS, ANGLES, HSS, ETC. SHALL BE TREATED WITH COLORGALV SYSTEM BY DUNCAN GALVANIZING.

ALL GALVANIZED STEEL INCLUDING BUT NOT LIMITED TO RAILS, STRINGERS, POSTS, BALUSTERS, BRACKETS, TREADS, ANGLES, HSS, ETC. SHALL BE TREATED WITH COLORGALV SYSTEM BY DUNCAN GALVANIZING.

ALL GALVANIZED STEEL INCLUDING BUT NOT LIMITED TO RAILS, STRINGERS, POSTS, BALUSTERS, BRACKETS, TREADS, ANGLES, HSS, ETC. SHALL BE TREATED WITH COLORGALV SYSTEM BY DUNCAN GALVANIZING.

ALL GALVANIZED STEEL INCLUDING BUT NOT LIMITED TO RAILS, STRINGERS, POSTS, BALUSTERS, BRACKETS, TREADS, ANGLES, HSS, ETC. SHALL BE TREATED WITH COLORGALV SYSTEM BY DUNCAN GALVANIZING.