

ARCHITECT:
REED & CO. ARCHITECTURE
 48 CUMBERLAND AVE
 PORTLAND, ME 04101
 207 871 5678

INTERIOR DESIGNER:
COLE DESIGN
 PO BOX 381
 KITTERY, ME 03904
 207 853 0863

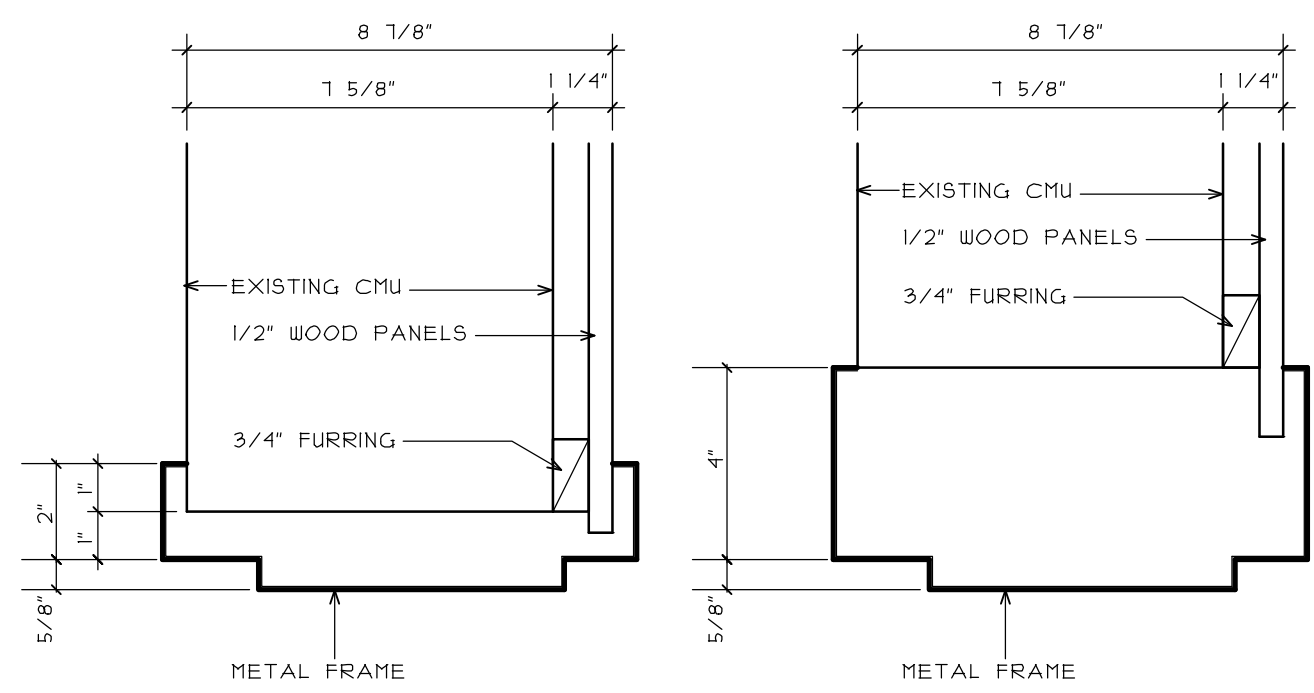
STRUCTURAL ENGINEER:
SHELLEY ENGINEERING
 PO BOX 1030
 GRAY, ME 04039
 207 657 8031

MECHANICAL ENGINEER:
HOLBROOK ENGINEERING
 52 HEATH RD
 SACO, ME 04072
 207 283 9127

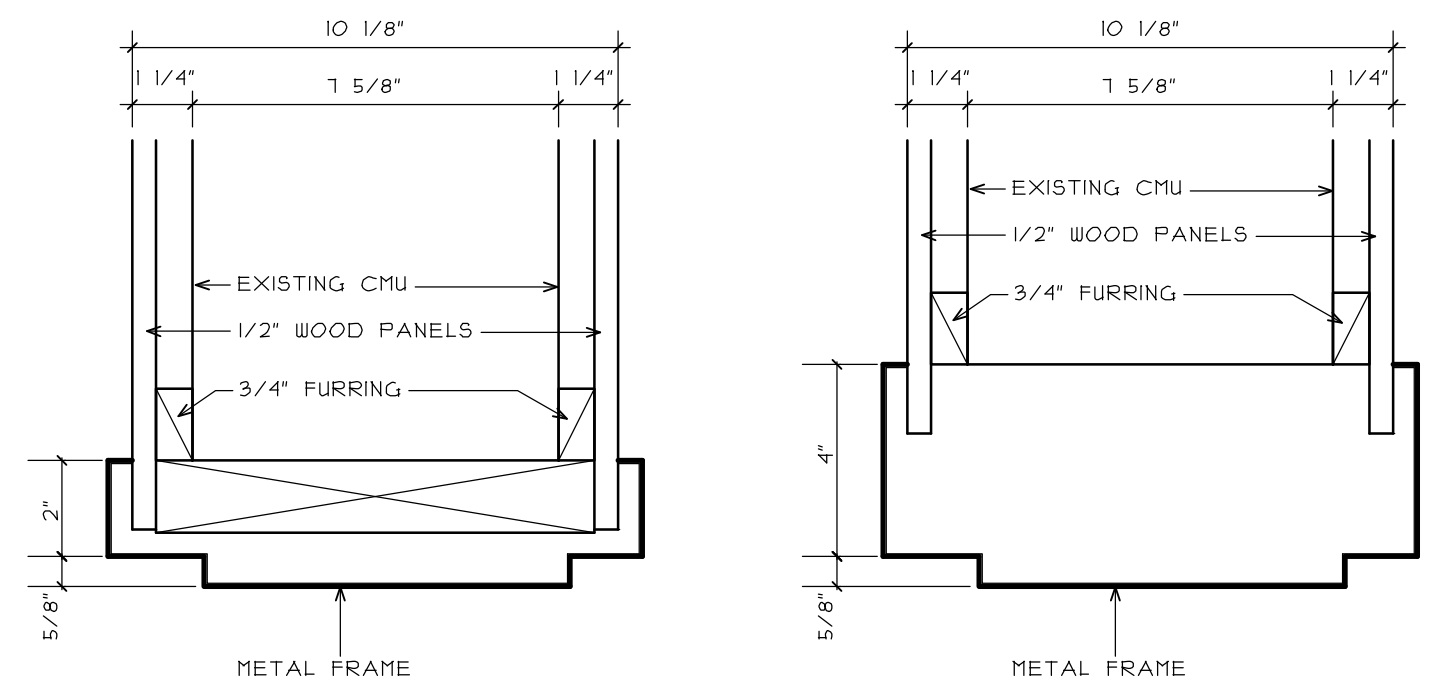
ELECTRICAL ENGINEER:
BARTLETT DESIGN
 842 WASHINGTON STREET
 BATH, MAINE 04530
 207 443 5447

DOOR AND FRAME SCHEDULE

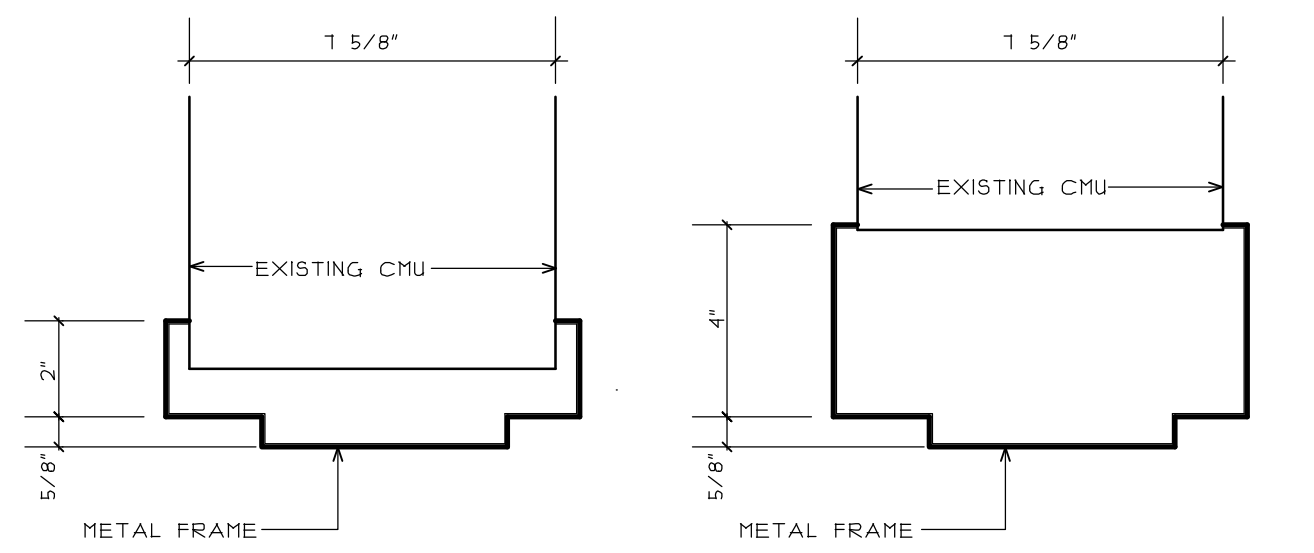
NO.	NOMINAL SIZE	DOOR				FRAME					REMARKS	
		THICK	MAT.	FINISH	TYPE	MAT.	FINISH	TYPE	HEAD	JAMB		THRESH
I01J	PR 3'-0" X 1'-0"	1 3/4"	ALUM.	PREFIN.		ALUM.	PREFIN.					ALUM. ENTRANCE, AUTO OPENER
I02I	3'-0" X 1'-0"	1 3/4"	WOOD	TRANS.	D1	HM	PAINT	P1	1b	1a		
I03I	3'-0" X 1'-0"	1 3/4"	WOOD	TRANS.	D1	HM	PAINT	P1	1b	1a		
I04I	PR 3'-0" X 1'-0"	1 3/4"	WOOD	TRANS.	D2	HM	PAINT	P2	2a	2a		AUTO OPENER
I042	PR 3'-0" X 1'-0"	1 3/4"	WOOD	TRANS.	D1	HM	PAINT	P2	2a	2a, 2b		
I043	PR 3'-0" X 1'-0"	1 3/4"	WOOD	TRANS.	D1	HM	PAINT	P2	2a	2a, 2b		
I044	2'-8" X 1'-0"	1 3/4"	METAL	PAINT	D1	HM	PAINT	P1	4a	4a		
I045	PR 3'-0" X 1'-0"	1 3/4"	WOOD	TRANS.	D1	HM	PAINT	P2	2a	2a, 2b		
I04I	PR 3'-0" X 1'-0"	1 3/4"	WOOD	TRANS.	D1	HM	PAINT	P2	2a	2a, 2b		
I05I												
I052	2'-10" X 1'-0"	1 3/4"	WOOD	TRANS.	D2	HM	PAINT	P1	5b	5a		
I04I	2'-4" X 1'-0"	1 3/4"	METAL	PAINT	D1	HM	PAINT	P1	3b	3a		1 HOUR FIRE RATED
I07I	3'-0" X 1'-0"	1 3/4"	WOOD	TRANS.	D1	HM	PAINT	P1	3b	3a		
I072	3'-0" X 1'-0"	1 3/4"	WOOD	TRANS.	D4	HM	PAINT	P5	5b	5a		
I08I	3'-0" X 1'-0"	1 3/4"	WOOD	TRANS.	D3	HM	PAINT	P3	1b	1a		AUTO OPENER, UNDER-CUT 3/4"
I082	3'-0" X 1'-0"	1 3/4"	METAL	PAINT	D1	HM	PAINT	P1	4b	4a		
I09I												
I092	4'-0" X 1'-8"					HM	PAINT	P4	5b	5a		
I22I	3'-0" X 1'-0"	1 3/4"	WOOD	TRANS.	D1	HM	PAINT	P1	1b	1a		1 HOUR FIRE RATED
I23I	3'-0" X 1'-0"	1 3/4"	WOOD	TRANS.	D2	HM	PAINT	P1	1b	1a		
I232	4'-0" X 1'-8"					HM	PAINT	P4	5b	5a		



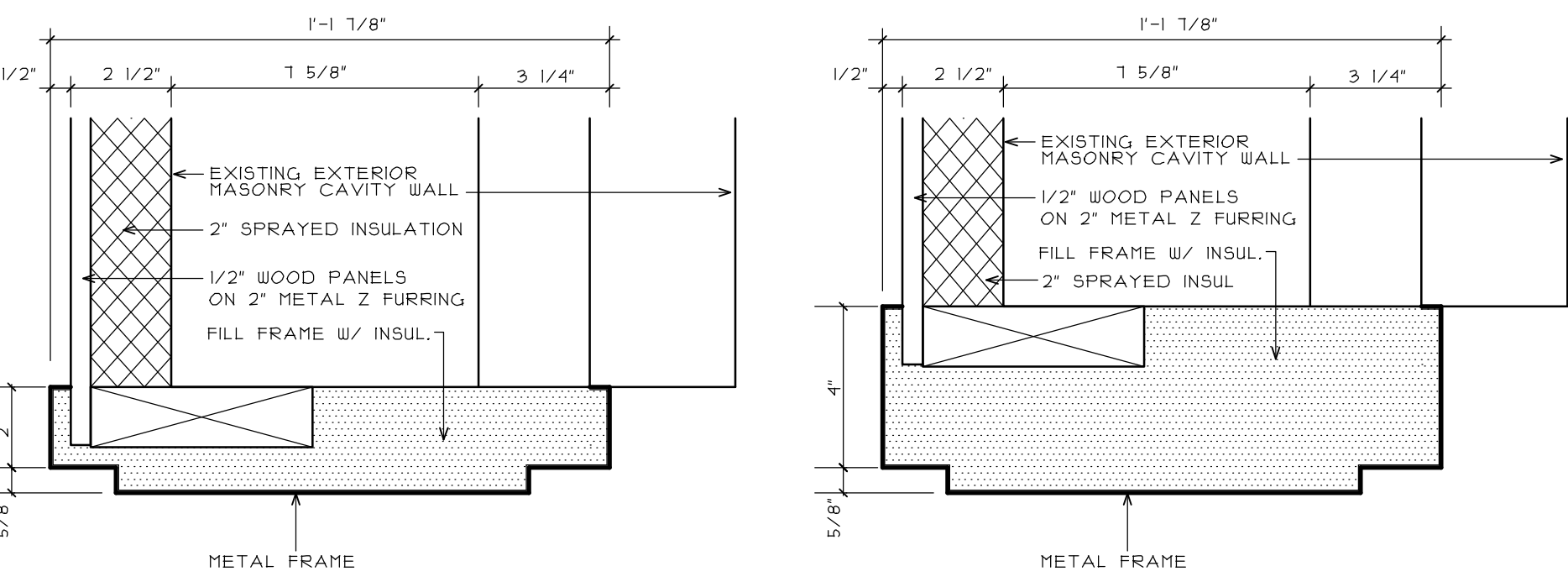
5a. HM JAMB @ OPENING #105.2
 5b. HM HEAD @ OPENING #105.2



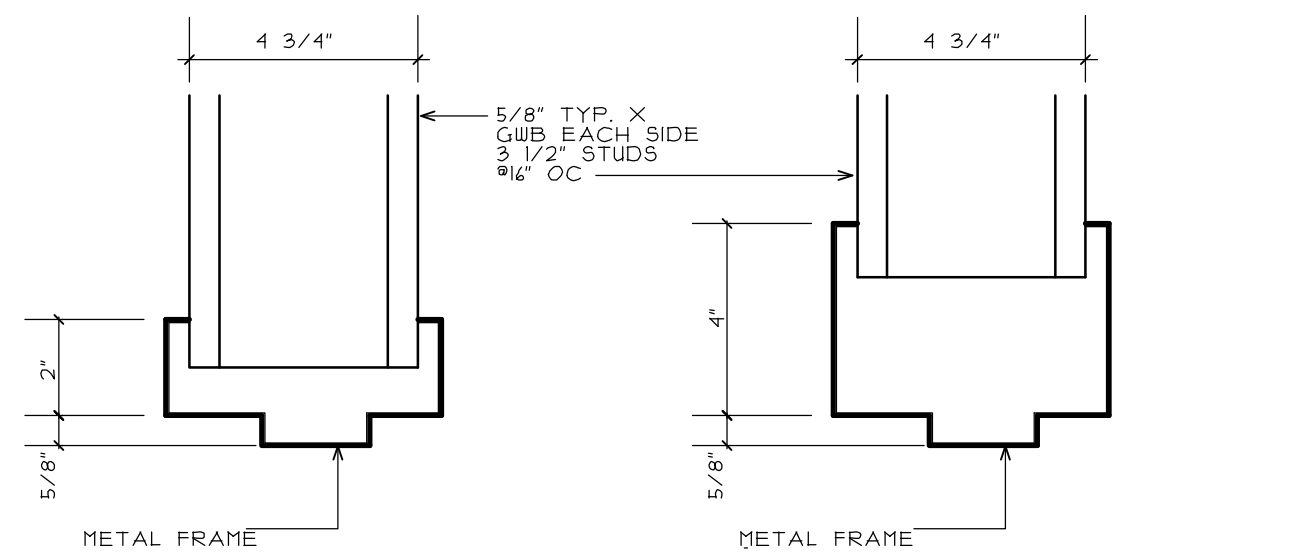
6a. HM JAMB @ OPENING #104.1
 6b. HM HEAD @ OPENING #104.1



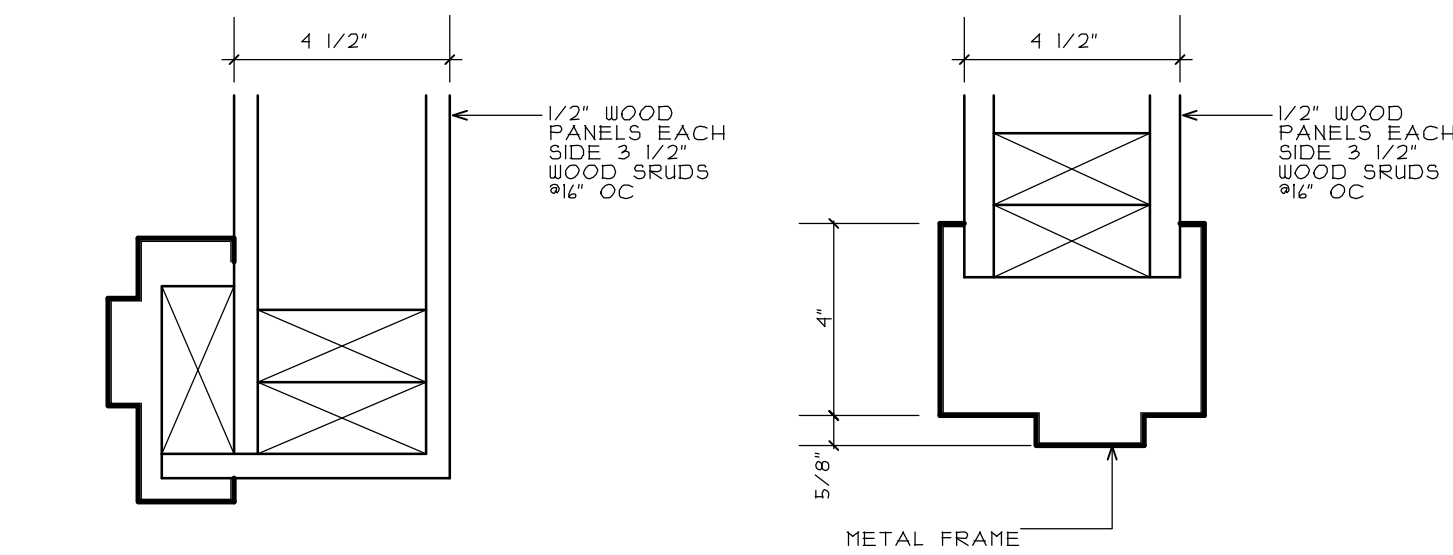
3a. HM JAMB @ OPENING #106.1, 107.1, 107.2
 3b. HM HEAD @ OPENING #106.1, 107.1, 107.2



4a. HM JAMB @ OPENING #104.4
 4b. HM HEAD @ OPENING #104.4



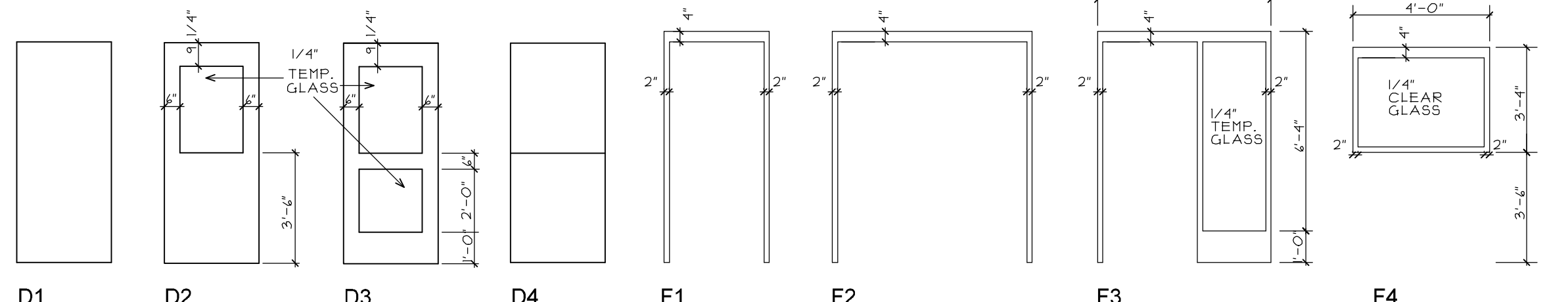
1a. TYPICAL HM JAMB
 1b. TYPICAL HM HEAD



2a. HM JAMB @ 104.2, 104.3, 104.5, 104.6
 2b. HM HEAD @ 104.2, 104.3, 104.5, 104.6

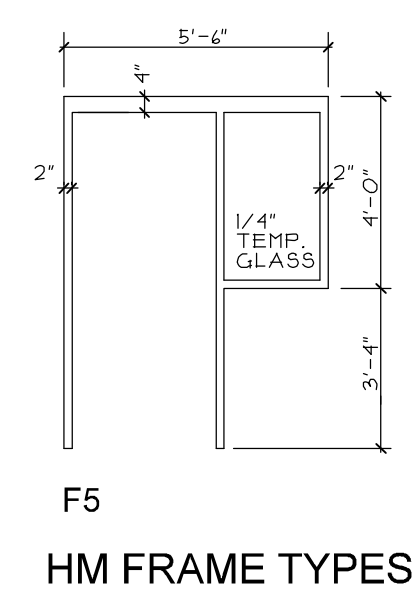
FRAME DETAILS

3" = 1'-0"



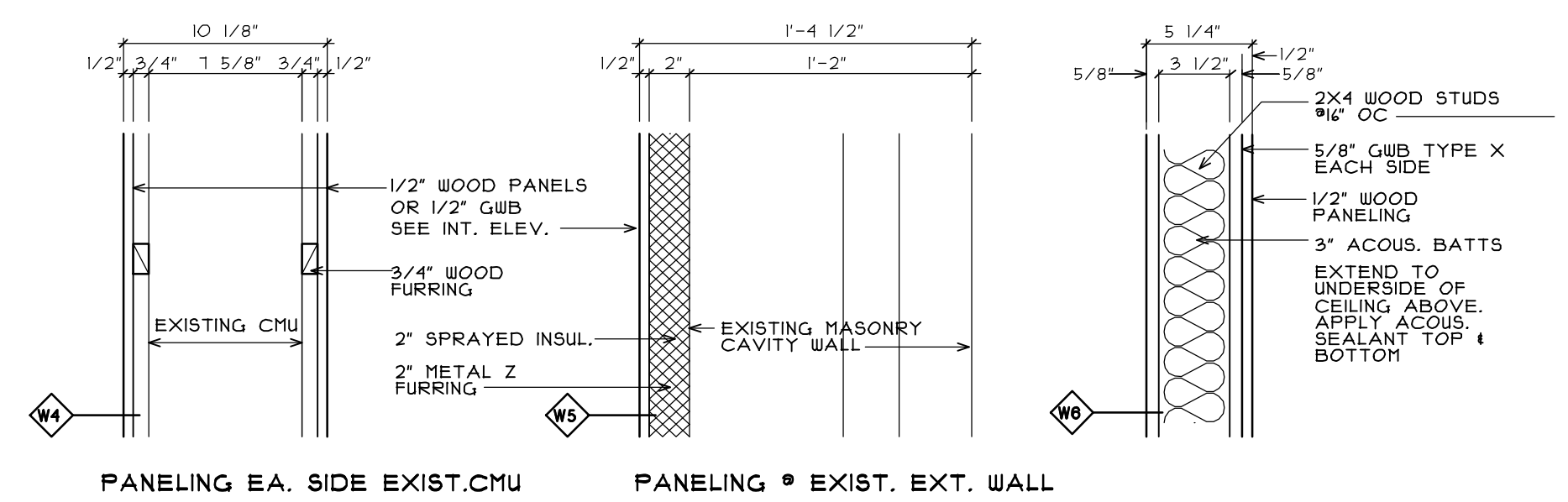
DOOR TYPES

1/4" = 1'-0"

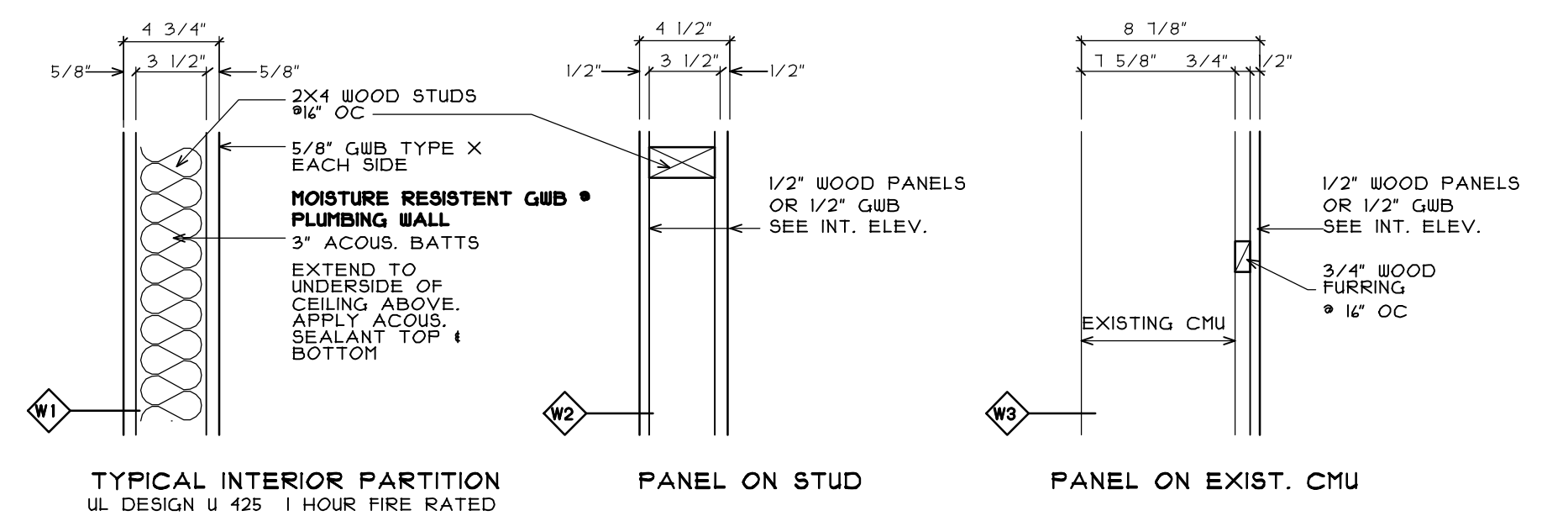


HM FRAME TYPES

1/4" = 1'-0"



PANELING EA. SIDE EXIST. CMU PANELING • EXIST. EXT. WALL



TYPICAL INTERIOR PARTITION UL DESIGN U 425 1 HOUR FIRE RATED PANEL ON STUD PANEL ON EXIST. CMU

WALL TYPES

1 1/2" = 1'-0"

PROPOSED IMPROVEMENTS
PEAKS ISLAND COMMUNITY CENTER & LIBRARY

Title: **SCHEDULES & DETAILS**
 WALL TYPES
 Sheet No.

A7.1

Scale: AS NOTED
 Date:
 Revised:

12-21-16 Issued for Review
 12-23-16 Revised per Review
 4-12-17 Issued for Bidding