

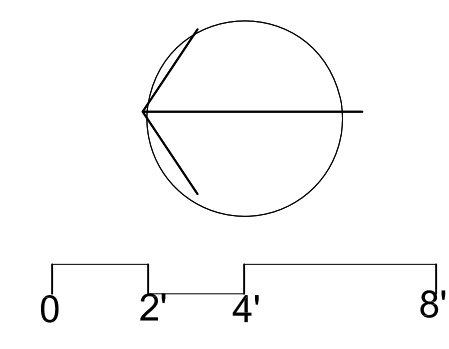
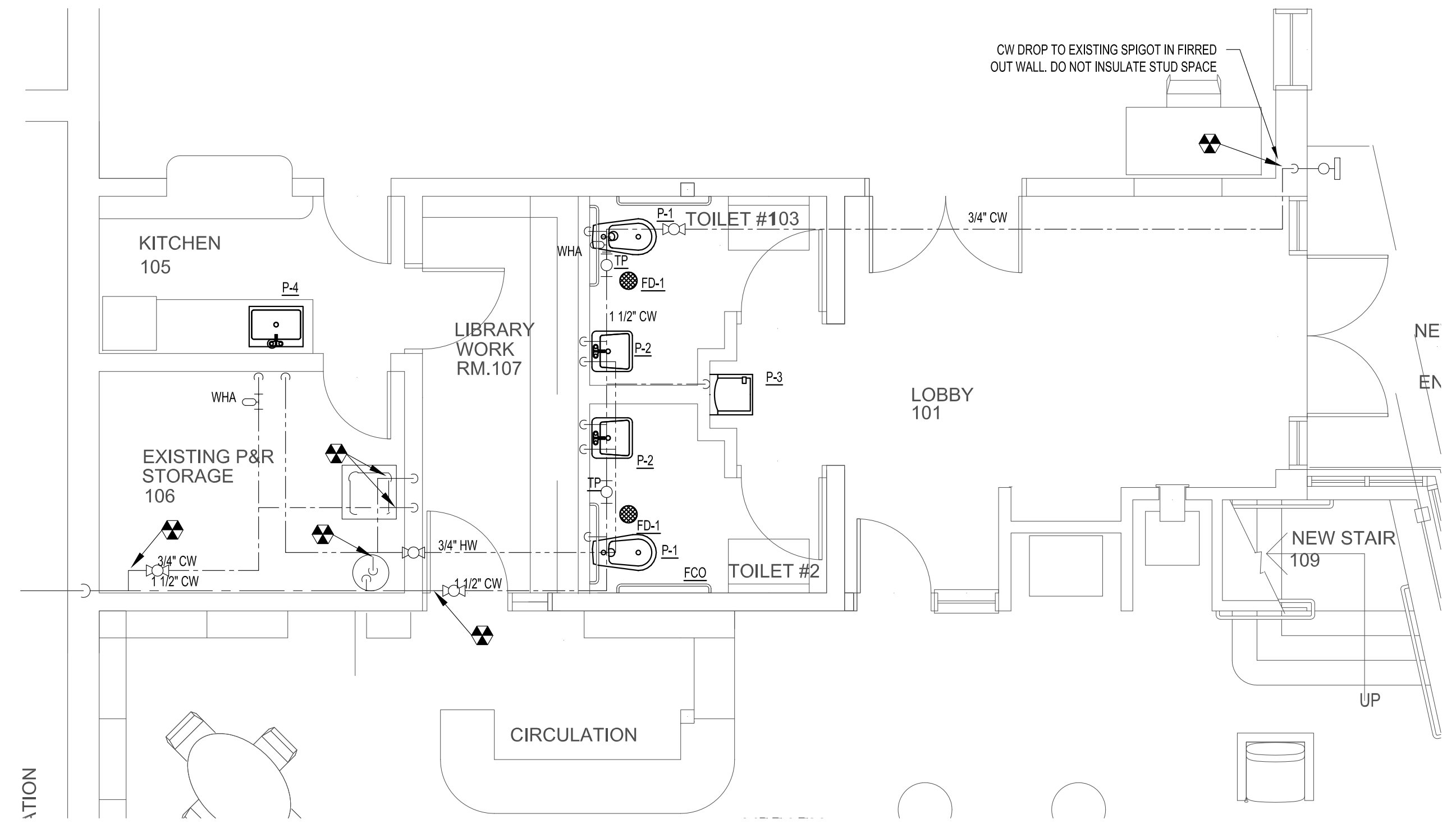
ARCHITECT:
REED & CO. ARCHITECTURE
 46 CUMBERLAND AVE
 PORTLAND, ME 04101
 207 871 5678

INTERIOR DESIGNER:
COLE DESIGN
 PO BOX 361
 KITTERY, ME 03904
 207 653 0083

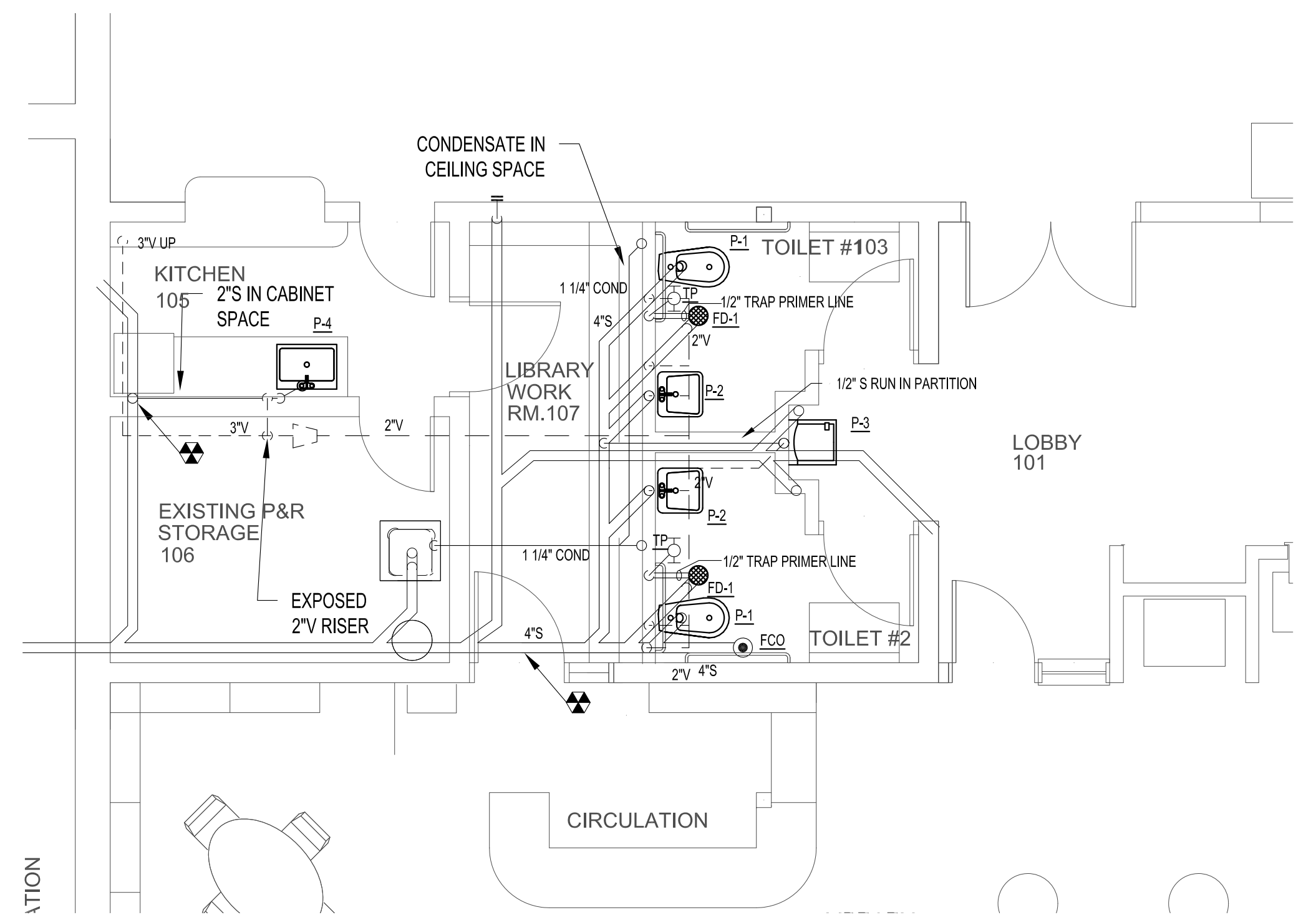
STRUCTURAL ENGINEER:
SHELLEY ENGINEERING
 PO BOX 1030
 GRAY, ME 04039
 207 857 9351

MECHANICAL ENGINEER:
HOLBROOK ENGINEERING
 52 HEATH RD
 SACO, ME 04072
 207 283 9127

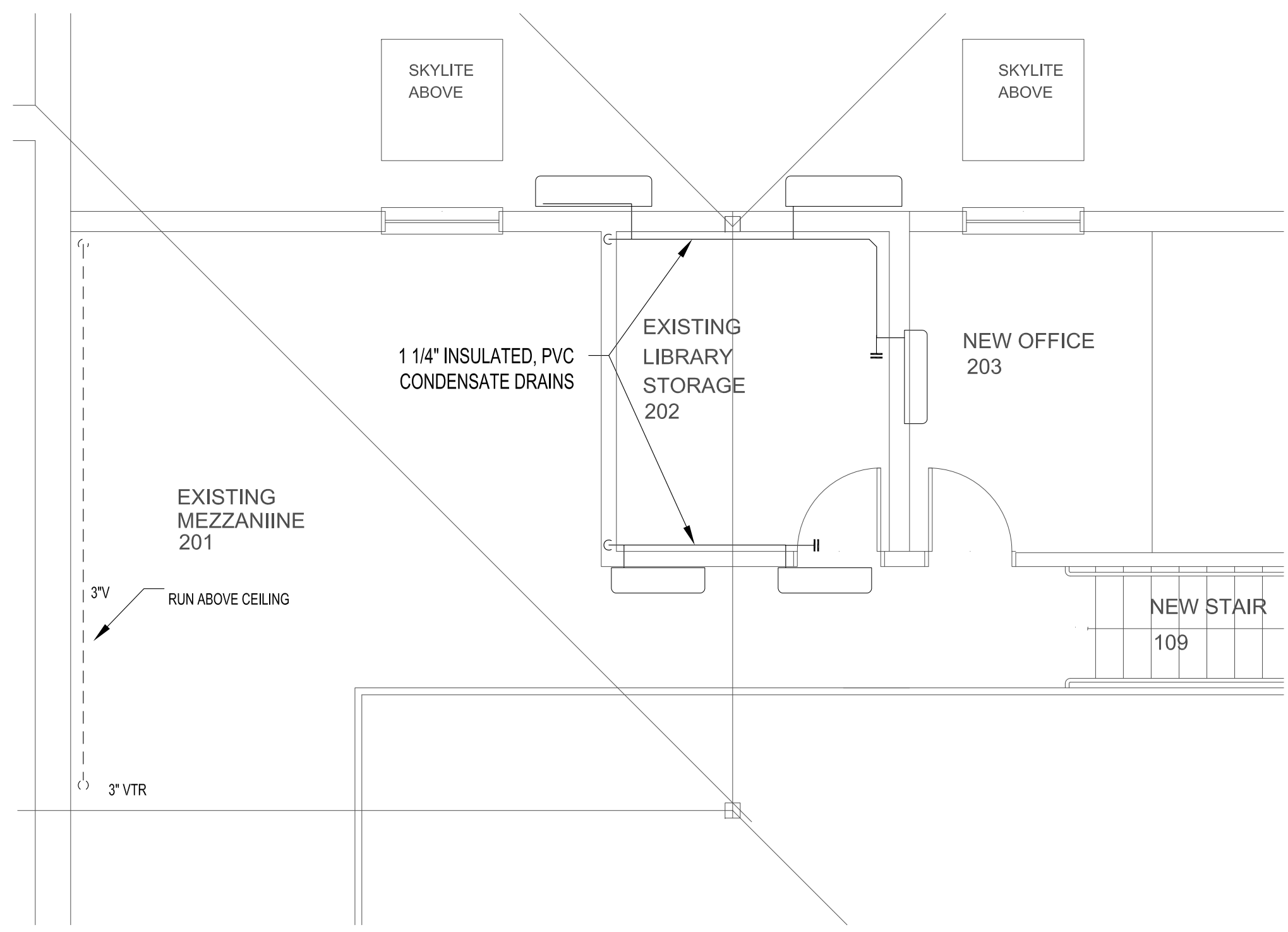
ELECTRICAL ENGINEER:
BARTLETT DESIGN
 942 WASHINGTON STREET
 BATH, MAINE 04530
 207 443 5447



DOMESTIC WATER - 1ST FLOOR PARTIAL PLAN
 SCALE: 1/4"=1'-0"



CONDENSATE, SANITARY AND VENT - 1ST FLOOR PARTIAL PLAN
 SCALE: 1/4"=1'-0"



CONDENSATE, SANITARY AND VENT - MEZZANINE PARTIAL PLAN
 SCALE: 1/4"=1'-0"

PROPOSED IMPROVEMENTS

PEAKS ISLAND COMMUNITY CENTER & LIBRARY

Title:
PLUMBING PLANS

Sheet No.
P2.0

Scale: 1/4" = 1'-0"
 Date:
 Revised:

FOR REVIEW
 12/21/16