



ARCHITECT:
REED & CO. ARCHITECTURE
 46 CUMBERLAND AVE
 PORTLAND, ME 04101
 207 874 5878

INTERIOR DESIGNER:
COLE DESIGN
 PO BOX 361
 KITTERY, ME 03904
 207 653 0083

STRUCTURAL ENGINEER:
SHELLEY ENGINEERING
 PO BOX 1030
 GRAY, ME 04039
 207 657 9351

MECHANICAL ENGINEER:
HOLBROOK ENGINEERING
 52 HEATH RD
 SACO, ME 04072
 207 283 9127

ELECTRICAL ENGINEER:
BARTLETT DESIGN
 942 WASHINGTON STREET
 BATH, MAINE 04530
 207 443 5447

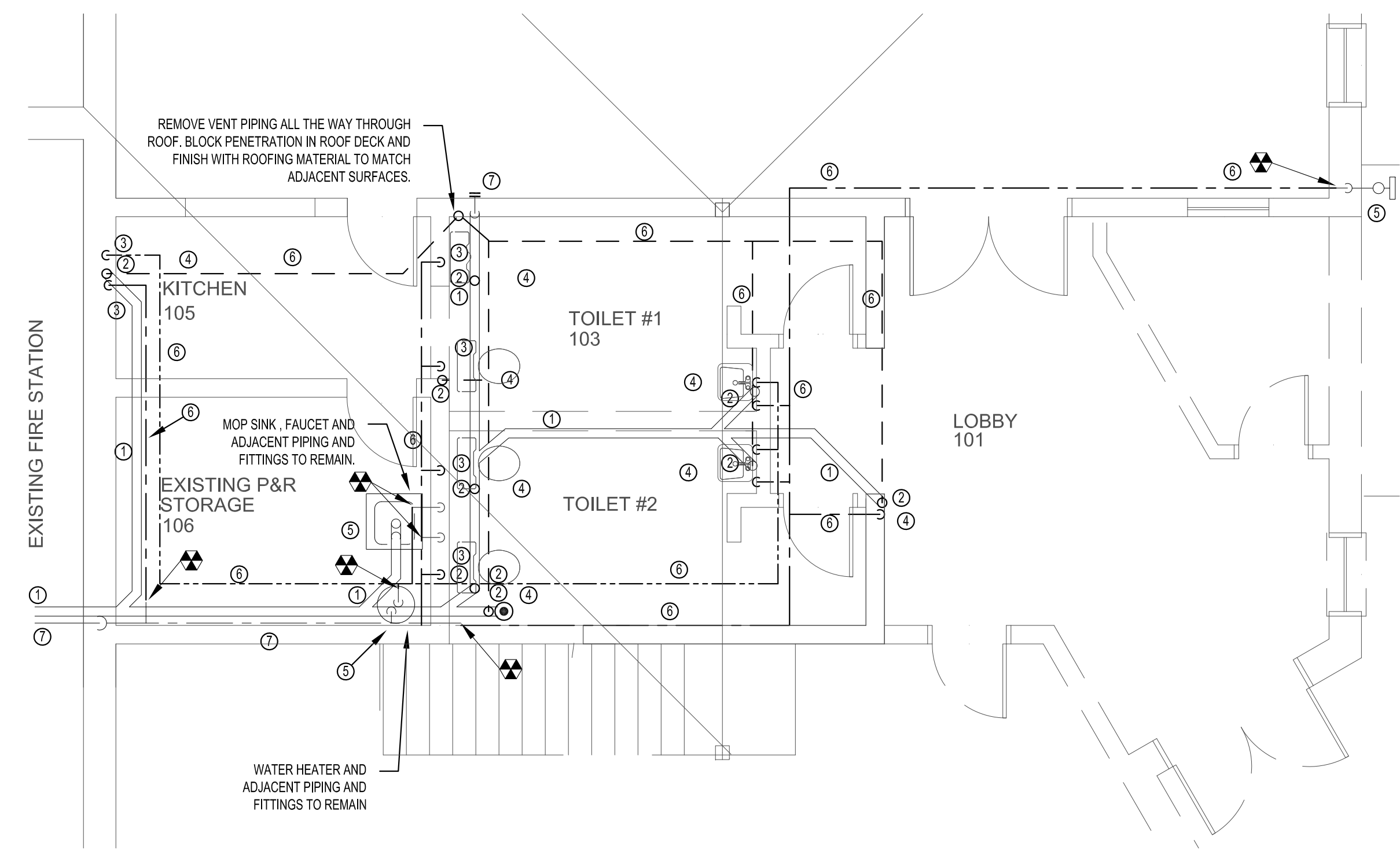
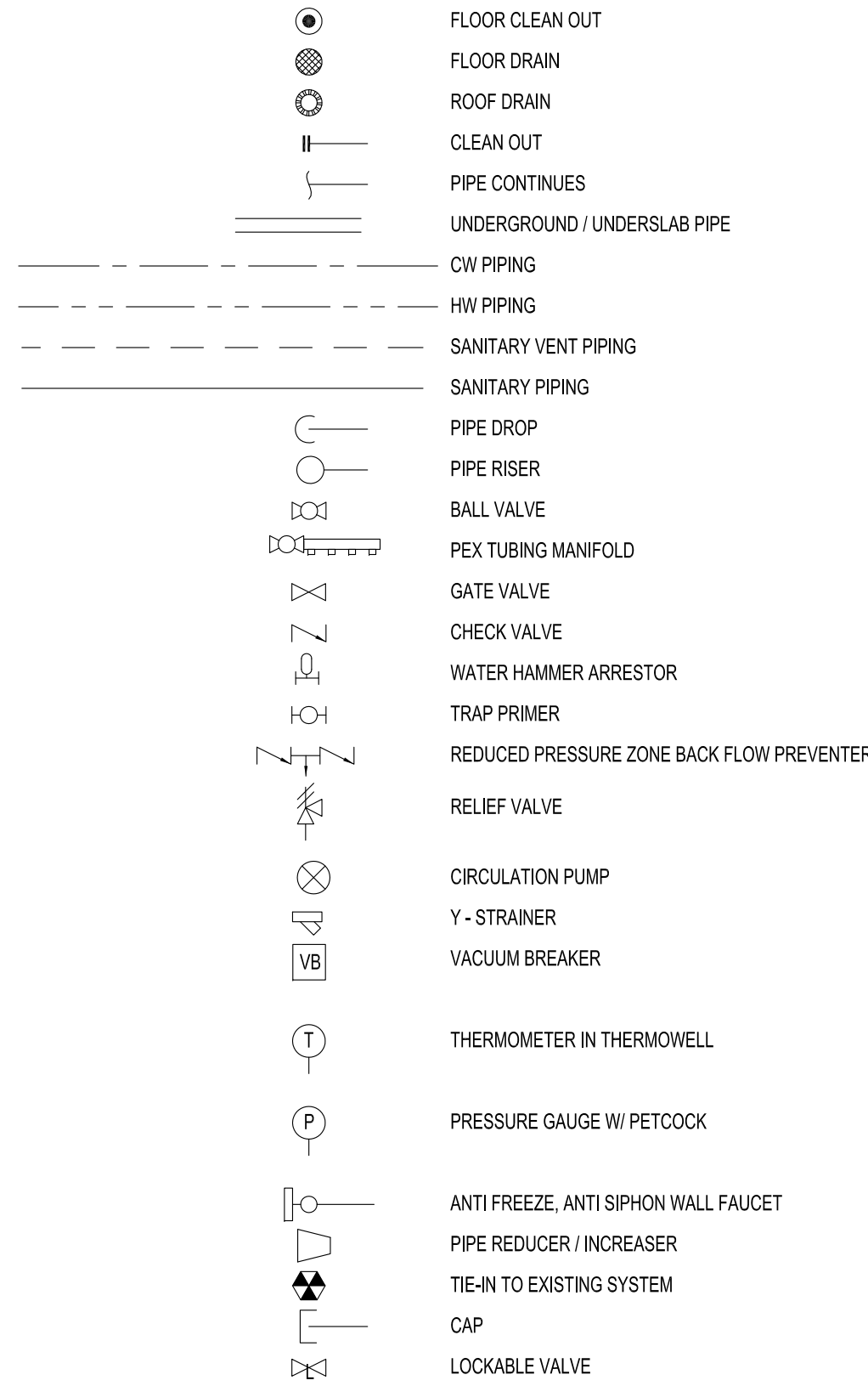
GENERAL PLUMBING NOTES

ABBREVIATIONS

SYMBOLS

- ALL NOTES, ABBREVIATIONS AND SYMBOLS ON THIS DRAWING APPLY TO ALL THE PLUMBING DRAWINGS IN THIS PACKAGE.
- SEE PROJECT SPECIFICATIONS FOR ADDITIONAL MATERIAL, CONSTRUCTION, WORKMANSHIP, TESTING AND COMMISSIONING REQUIREMENTS. WHERE A CONFLICT EXISTS BETWEEN THE SPECIFICATION AND PROJECT DRAWINGS THE MORE STRINGENT REQUIREMENT SHALL APPLY.
- ALL PLUMBING WORK TO BE DONE IN ACCORDANCE WITH THE GENERAL CONTRACTORS PHASING PLAN.
- ALL PLUMBING WORK TO BE DONE IN ACCORDANCE WITH THE MAINE STATE INTERNAL PLUMBING CODE -2009 EDITION AND ITS ADDENDUMS.
- MAINTAIN PLUMBING SERVICES TO SPACES OUTSIDE OF THE PROJECT SCOPE. COORDINATE TIMING AND DURATION WITH GENERAL CONTRACTOR AND BUILDING OWNER WHEN SYSTEM SHUTDOWNS ARE REQUIRED.
- INSTALL ALL PLUMBING EQUIPMENT IN ACCORDANCE WITH THE MANUFACTURER'S RECOMMENDATIONS. WHERE CONFLICTS EXIST BETWEEN PROJECT DOCUMENTS AND MANUFACTURER'S RECOMMENDATIONS THE MORE STRINGENT REQUIREMENT SHALL APPLY.
- CONFIRM ANY EQUIPMENT OR SYSTEMS TO BE REMOVED WITH THE OWNER BEFORE COMMENCING DEMOLITION.
- PLUMBING CONTRACTOR IS RESPONSIBLE FOR CONCRETE REMOVAL AND REPLACEMENT AS NECESSARY TO COMPLETE PLUMBING SYSTEMS.
- DISPOSE OF REMOVED EQUIPMENT AND MATERIAL IN ACCORDANCE WITH STATE AND LOCAL REGULATIONS.
- THE PLUMBING CONTRACTOR IS RESPONSIBLE FOR THE REPAIR OR REPLACEMENT OF ANY DAMAGE CAUSED BY THE PLUMBING CONTRACTOR TO ANY NEW OR EXISTING BUILDING SYSTEMS.
- COORDINATE NEW INSTALLATIONS WITH THE GENERAL CONTRACTOR, STRUCTURAL, ELECTRICAL AND ARCHITECTURAL DESIGN. CONSULT STRUCTURAL ENGINEER BEFORE ANY MODIFICATIONS TO STRUCTURAL MEMBERS.
- THE PLUMBING DRAWINGS ARE DIAGRAMMATIC. THE EXACT LOCATION OF PLUMBING EQUIPMENT AND SYSTEMS IS TO BE DETERMINED BY THE PLUMBING CONTRACTOR.
- PROVIDE OFFSETS AS REQUIRED TO ROUTE PIPING AROUND OTHER BUILDING SYSTEMS AND EQUIPMENT.
- MOST INTERIOR PARTITIONS ARE FULL HEIGHT. SEAL PENETRATIONS THROUGH PARTITIONS FOR SOUND. SEAL FIRE RATED PARTITIONS IN ACCORDANCE WITH UL APPROVED ASSEMBLY FOR THE ASSOCIATED FIRE RATING.
- TIE-IN LOCATIONS TO EXISTING SYSTEMS ARE APPROXIMATE. PLUMBING CONTRACTOR TO DETERMINE EXACT TIE-IN LOCATION.
- SEE DETAILS FOR TYPICAL INSTALLATIONS NOT SHOWN ON THE PLUMBING PLANS.
- SEE ARCHITECTURAL DRAWINGS FOR LOCATIONS AND ELEVATIONS OF WALL MOUNTED FIXTURES.
- ALL PLUMBING PIPING IS TO BE CONCEALED IN WALLS, FLOORS AND CEILINGS UNLESS NOTED OTHERWISE. PROVIDE ACCESS PANELS WHERE REQUIRED TO ACCESS VALVES, WATER HAMMER ARRESTORS, TRAP PRIMERS AND OTHER MAINTENANCE ITEMS.
- COORDINATE PLUMBING FLOOR, WALL AND ROOF PENETRATIONS WITH THE GENERAL CONTRACTOR.
- INFILL AND PATCH EXISTING PLUMBING PENETRATIONS THAT ARE ABANDONED UNDER THIS PROJECT.
- CAP ALL ABANDONED TO REMAIN PLUMBING PIPING SYSTEMS. CAP ALL EXISTING PLUMBING PIPING SYSTEMS TO REMAIN IN USE.
- RUN ALL SANITARY AND STORM DRAIN PIPING AT 1/4" PER FOOT SLOPE.
- ALL BURIED SANITARY AND STORM DRAIN PIPING SHALL BE A MINIMUM OF 2' DIAMETER.

AFF	ABOVE FLOOR FACE
BFF	BELOW FLOOR FACE
BTU	BRITISH THERMAL UNIT
BHP	BRAKE HORSEPOWER
CO	CLEAN OUT
COND	CONDENSATE
CW	DOMESTIC COLD WATER
DB	DRY BULB
F	DEGREE FAHRENHITE
FCO	FLOOR CLEAN OUT
FD	FLOOR DRAIN
FW	FIRE PROTECTION WATER
HW	DOMESTIC HOT WATER
HWR	DOMESTIC HOT WATER RECIRCULATION
MBH	1000 BTU PER HOUR
NTS	NOT TO SCALE
OA	OUTSIDE AIR
PEX	CROSS LINKED POLYETHYLENE
RPZ	REDUCED PRESSURE ZONE BACK FLOW PREVENTER
R	STORM DRAIN
RD	ROOF DRAIN
S	SANITARY
SP	STATIC PRESSURE
TP	TRAP PRIMER
VTR	VENT THROUGH ROOF
WB	WET BULB
WC	WATER COLUMN
WCO	WALL CLEAN OUT
WHA	WATER HAMMER ARRESTOR
WF	ANTI FREEZE, ANTI SIPHON WALL FAUCET
V	SANITARY VENT

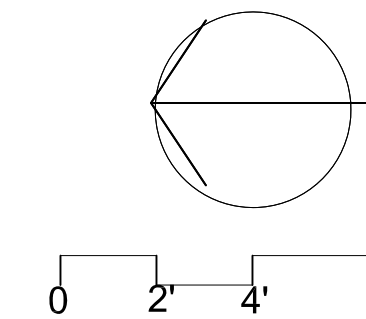


PLUMBING DEMOLITION NOTES

- SUBSLAB SANITARY PIPING TO REMAIN
- PLUG EXISTING PIPING BELOW FLOOR. PATCH TO MATCH ADJACENT SURFACES.
- PLUG EXISTING PIPING BEHIND WALL. PATCH TO MATCH ADJACENT SURFACES.
- REMOVE PLUMBING FIXTURE
- PLUMBING FIXTURE TO REMAIN
- REMOVE PIPING
- PIPING TO REMAIN

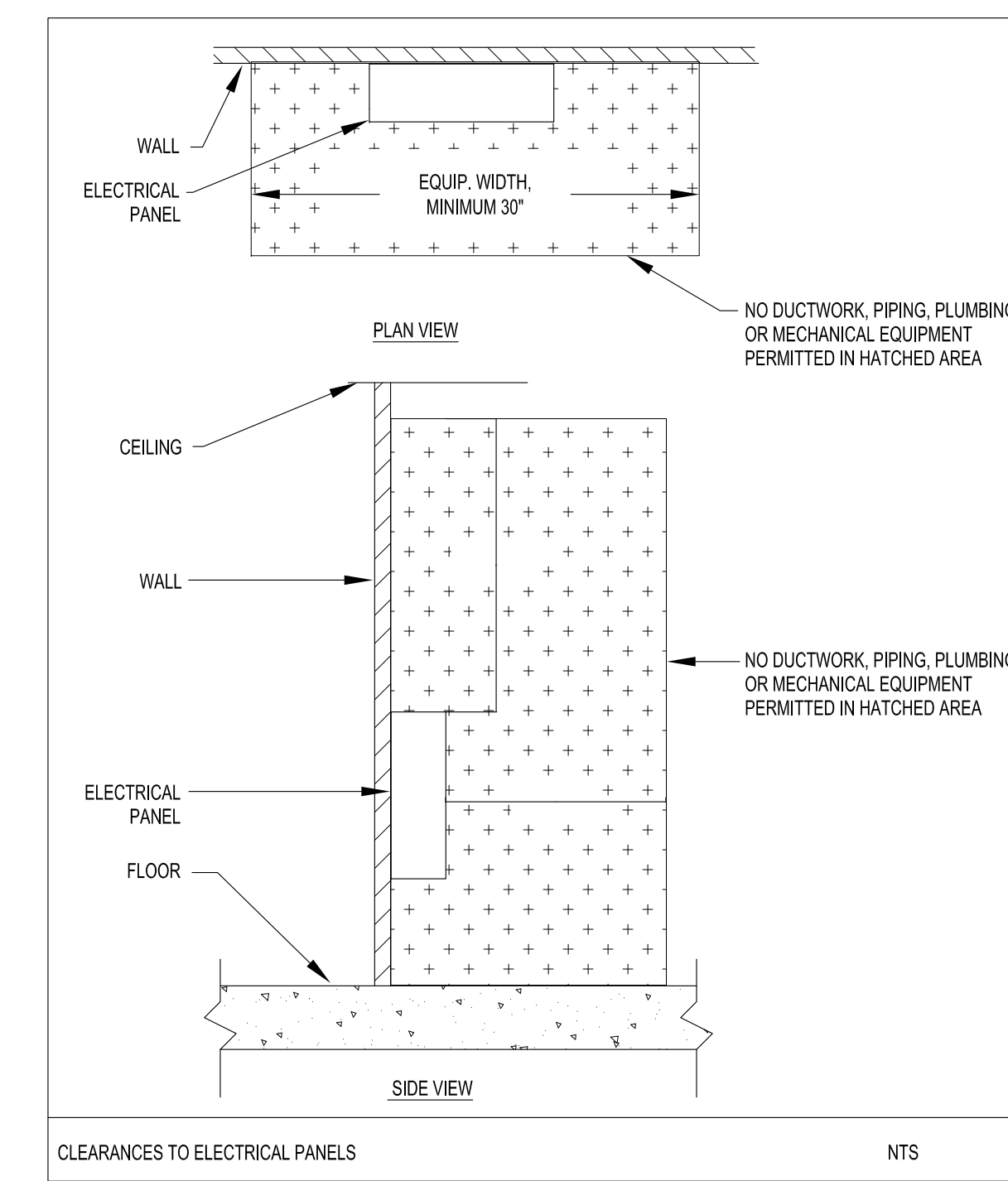
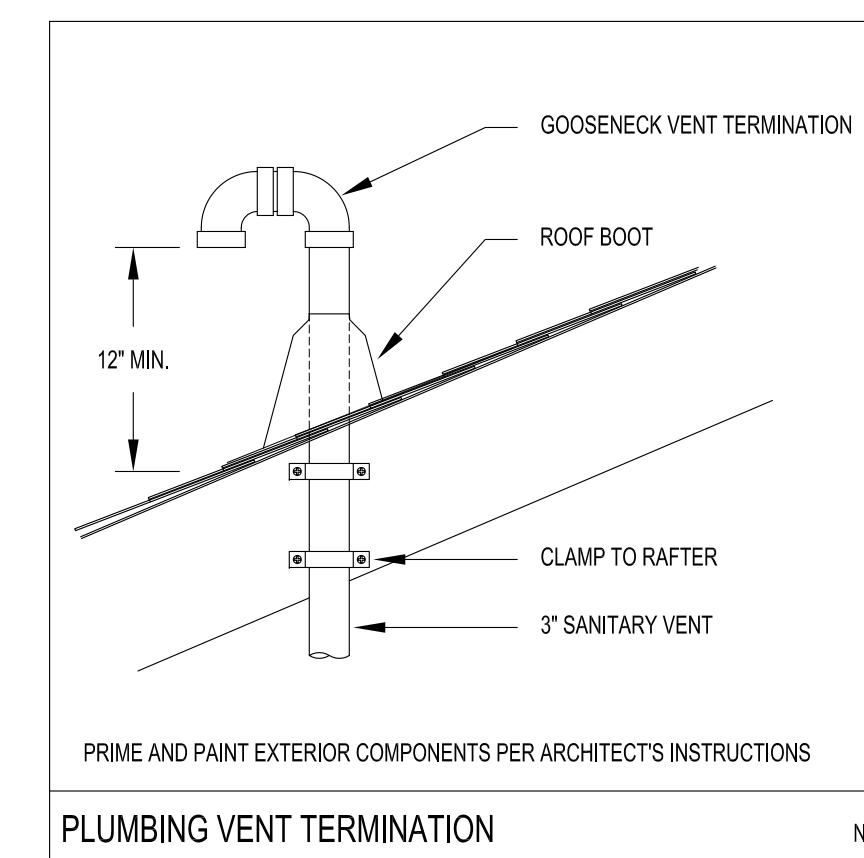
PLUMBING DEMOLITION - 1ST FLOOR PARTIAL PLAN

SCALE: 1/4"=1'-0"



TAG #	FIXTURE TYPE	CONNECTION SIZES				TYPICAL MANUFACTURER AND MODEL	DESCRIPTION	NOTES
		CW	HW	S	V			
P-1	ADA TOILET	1 1/4"	-	4"	2"	ZURN Z5665-BWL1 BOWL Z5665-SSSEL SEAT, Z6000-WS-1 FLUSH VALVE	ADA COMPLIANT, FLOOR MOUNT, MANUAL 1.6 GPF FLUSH VALVE, WHITE VITREOUS CHINA, ELONGATED OPEN FRONT SEAT, NO COVER STAINLESS STEEL HINGES	3
P-2	ADA LAVATORY	1/2"	1/2"	1 1/2"	1 1/2"	KOHLER K-2032 BOWL, ZURN Z1446-XL FAUCET, ZURN Z2131 CARRIER	ADA COMPLIANT, VITREOUS CHINA WITH BACK SPLASH, CONCEALED ARM CARRIER, SINGLE LEVER FAUCET, GRID STRAINER, ADA INSULATION ON EXPOSED TRAPS AND HW SUPPLY	1, 2, 3
P-3	ADA BOTTLE FILLERS AND DRINKING FOUNTAIN	1/2"	1/2"	1 1/2"	1 1/2"	ELKAY L235WSVRYK	ADA COMPLIANT, WALL MOUNT, FILTERED, NON-REFRIGERATED, STAINLESS PANELS, 120 VAC WITH PLUG IN CORD	3
P-4	ADA KITCHEN SINK	1/2"	1/2"	2"	1 1/2"	ELKAY LRAD 191955 WITH ZURN Z871B4-XL-HS	ADA COMPLIANT, 18 GAUGE STAINLESS STEEL, 20"W X 19" FRONT TO BACK, BASKET STRAINER CHROME PLATED GOOSENECK FAUCET, 8" CENTERS, SPRAY HOSE	3
FCO	FLOOR CLEAN OUT	-	-	-	-	ZURN ZN1400-BZ	ADJUSTABLE, NICKEL BRONZE TOP PLATE, SIZE TO MATCH SANITARY LINE	3
FD-1	FLOOR DRAIN	-	-	2"	2"	ZURN FD2322	BRONZE GRATE, PROVIDE WITH TRAP PRIMER	3
TP	TRAP PRIMER	-	-	1/2"	-	PPP PRO-1JLP500	IN LINE FLOW ACTIVATED	3

NOTES: 1. PROVIDE WITH SWEAT CONNECTED CHROME PLATED QUARTER TURN ANGLE STOPS, BRAIDED STAINLESS STEEL HOSE RISER, CHROME PLATED ESCUTCHEONS.
 2. PROVIDE WITH PERFORATED DRAIN, CHROME PLATED TAIL PIECE, P-TRAP AND ESCUTCHEON PLATE
 3. TYPICAL MANUFACTURER AND MODEL ARE FOR REFERENCE ONLY. APPROVED, EQUIVALENT PRODUCTS FROM OTHER MANUFACTURERS THAT MEET THE PERFORMANCE AND SPECIFICATION REQUIREMENTS ARE ALSO ACCEPTABLE.



PROPOSED IMPROVEMENTS

PEAKS ISLAND COMMUNITY CENTER & LIBRARY

Title:
PLUMBING NOTES AND DEMOLITION
 Sheet No.

P1.0

Scale: AS NOTED
 Date:
 Revised:

FOR REVIEW
 12/21/16