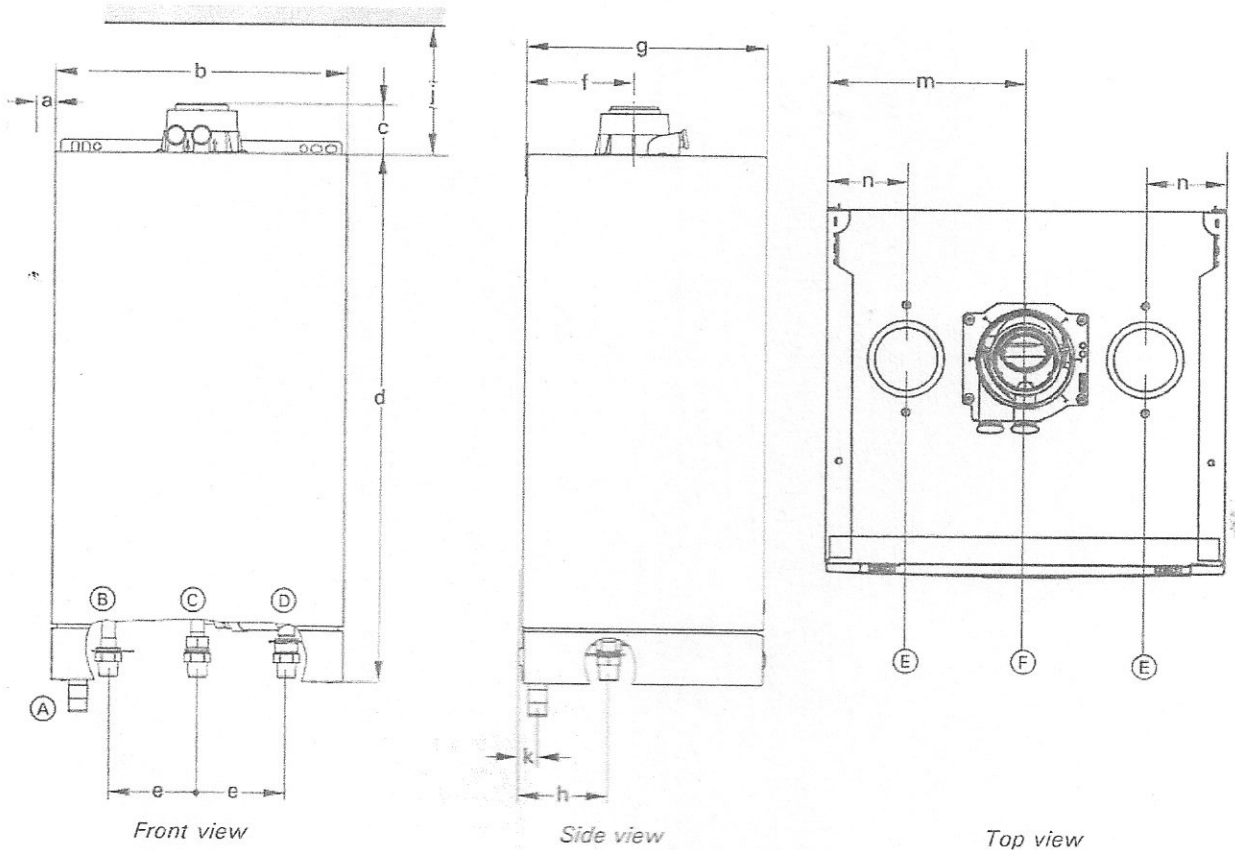


**Preparing the Connections** *(continued)*

Dimensions overview without bottom piping connections



**Connections Vitodens 100-W, WB1B 26, 35**

**Legend**

**Connections**

- (A) Condensate drain, plastic hose Ø 0.87" (22 mm)
- (B) Boiler water supply, NPT 3/4" (male thread)
- (C) Gas connection, NPT 3/4" (male thread)
- (D) Boiler water return, NPT 3/4" (male thread)
- (E) Combustion air opening for double pipe system
- (F) Combustion air opening for coaxial system

**Dimensions**

- a 14" (355 mm)
- b 15 3/4" (400 mm)
- c 2 5/8" (68 mm)
- d 28 1/2" (725 mm)
- e 4 7/8" (123 mm)
- f 6 1/8" (156 mm)
- g 14 1/8" (360 mm)
- h 5" (125 mm)
- j 9 7/8" (250 mm)
- k 1 1/4" (31 mm)
- m 7 7/8" (200 mm)
- n 3 1/8" (80 mm)



When preparing gas, water and electrical connections in the field, see section entitled "Wall Mounting" on page 15 of this manual for information regarding the installation of the wall mounting bracket.

**IMPORTANT**

The maximum ambient temperature must not exceed 104° F (40° C).

- Heating water connections and gas connection to be made in the field. See connection-specific section for details.
- See subsection entitled "Power supply connection" for details regarding power supply to the Vitodens 100-W boiler.