

Side Wall Vent Installation (Coaxial)

Side Wall Venting Layouts (Coaxial)

Layout with basic coaxial vent componentry

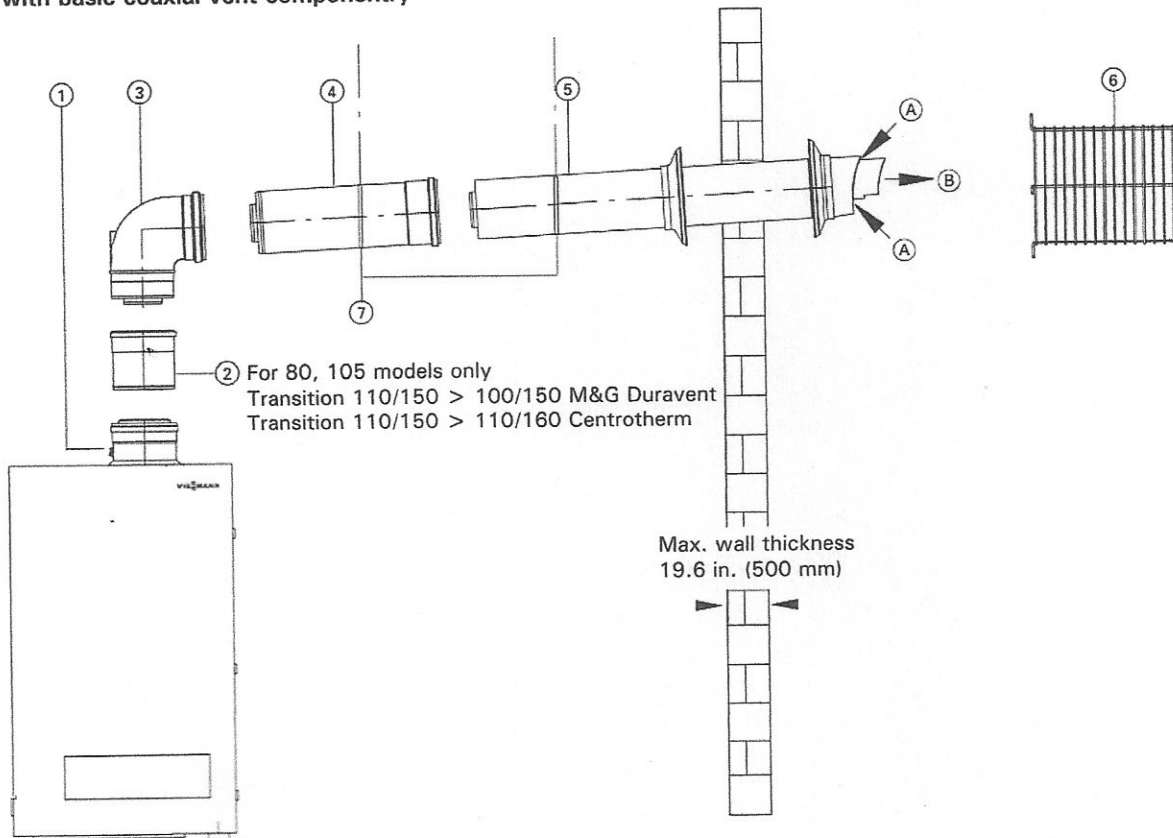


Fig. 4 Standard side wall venting layout

- ① Vent pipe adaptor
- ② Transition adaptor for 80 /105 models
M&G Duravent 110/150 > 100/150
or InnoFlue Centrotherm 110/150 > 110/160
- ③ Elbow, 87°
- ④ Straight pipe
- ⑤ Vent termination (incl. wall flashings)

Table 3. Standard sizes of boiler flue gas adaptors (item ①)

Boiler model	Adaptor Size
WB1B 26	60 / 100
WB1B 35	60 / 100
WB2B 19	60 / 100
WB2B 26	60 / 100
WB2B 35	60 / 100
WB2B 45	80 / 125
WB2B 60	80 / 125
WB2B 80	110 / 150
WB2B 105	110 / 150

IMPORTANT

Total length of vent termination pipe may be shortened, if required. Follow manufacturer's instructions.

- ⑥ Protective screen

! WARNING

Protective screen **MUST** be installed.

- ⑦ Mounting clip (vent support system)
- Ⓐ Combustion air intake
- Ⓑ Flue gas outlet