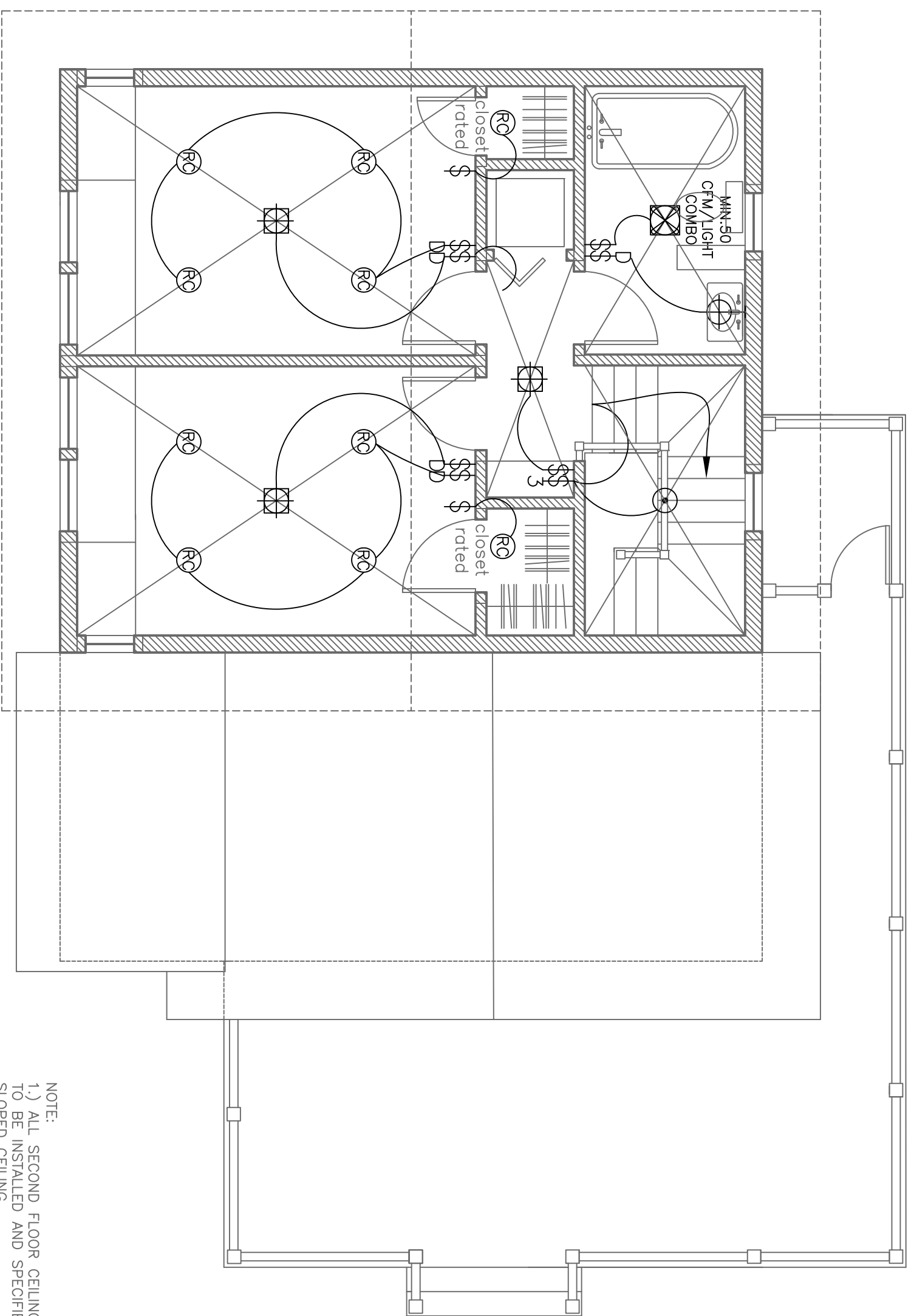


Second Floor  
Lighting Plan



(A) Proposed Second Floor Lighting Plan  
1/4" = 1'-0"

NOTE:  
1.) ALL SECOND FLOOR CEILING LIGHTS ARE  
TO BE INSTALLED AND SPECIFIED FOR  
SLOPED CEILING.

PROJECT  
Moan Residence  
186 Seashore Avenue  
Peaks Island, Me.  
04108

DATE 12.6.12 REVISED 12.6.12  
SCALE 1/4" = 1'-0" DRAWN BY Rachel

NOTES

⊕	duplex	○—○	undercounter
⊕	ground-fault circuit interrupter	⊕	ceiling fan / integral light
⊕	220 volt	⊕	ceiling fan
⊕	switch	⊕	phone jack
⊕	3-way switch	⊕	DSL
⊕	dimmer switch	⊕	DSL
⊕	smoke detector	⊕	DSL
⊕	minimum 50 dfm wet fan	⊕	DSL
⊕	MIN-50 CFM	⊕	DSL
⊕	ceiling mount light fixture	⊕	DSL
⊕	pendant light fixture	⊕	DSL
⊕	recessed can light fixture	⊕	DSL
⊕	wall sconce light fixture	⊕	DSL
⊕	wet location wall sconce light fixture	⊕	DSL
⊕	foot lighting	⊕	DSL
⊕	fluorescent body switched	⊕	DSL