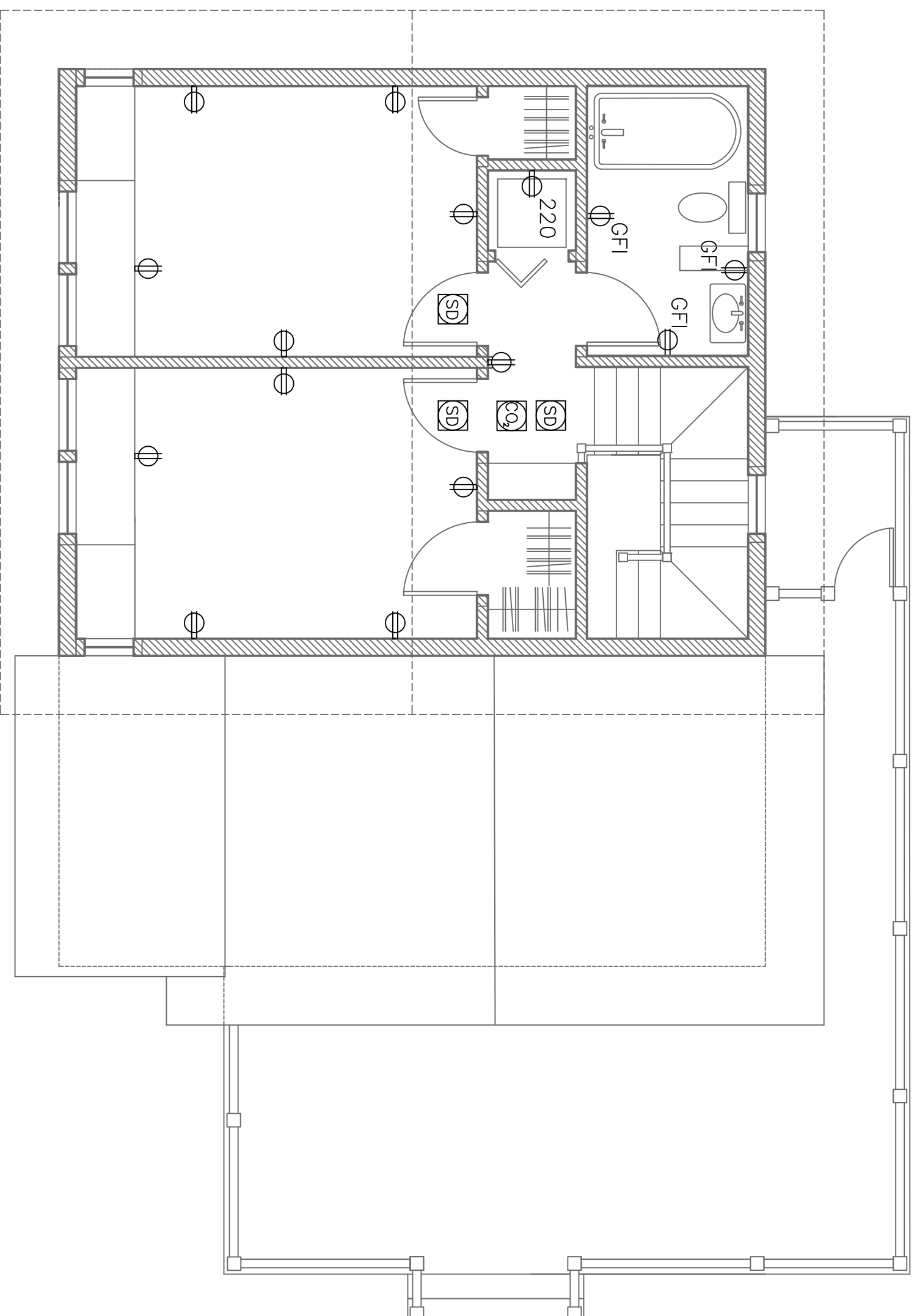


Second Floor
Power Plan



(A) Proposed Second Floor Power Plan
1/4" = 1'-0"

PROJECT

Moan Residence

186 Seashore Avenue
Peaks Island, Me.
04108

DATE 12.6.12

REVISED 1.4.13

SCALE 1/4" = 1'-0"
DRAWN BY Rachel

NOTES

- ⊕ duplex
- ⊕ ground-fault circuit interrupter
- ⊕ 220 volt
- ⊕ switch
- ⊕ 3-way switch
- ⊕ dimmer switch
- ⊕ smoke detector
- ⊕ minimum 50 dfm
- ⊕ vent fan
- MIN 50
- CFM
- ⊕ ceiling mount
- ⊕ pendant
- ⊕ recessed can
- ⊕ wall sconce
- ⊕ wet location wall sconce
- ⊕ WL
- ⊕ fan/lighting
- ⊕ fluorescent
- ⊕ body switched
- undercounter
- ⊕ ceiling fan / integral light
- ⊕ ceiling fan
- ⊕ phone jack
- ⊕ DSL
- ⊕ CABLE
- ⊕ OUT 5
- ⊕ central vacuum
- ⊕ compact fluorescent
- ⊕ recessed can