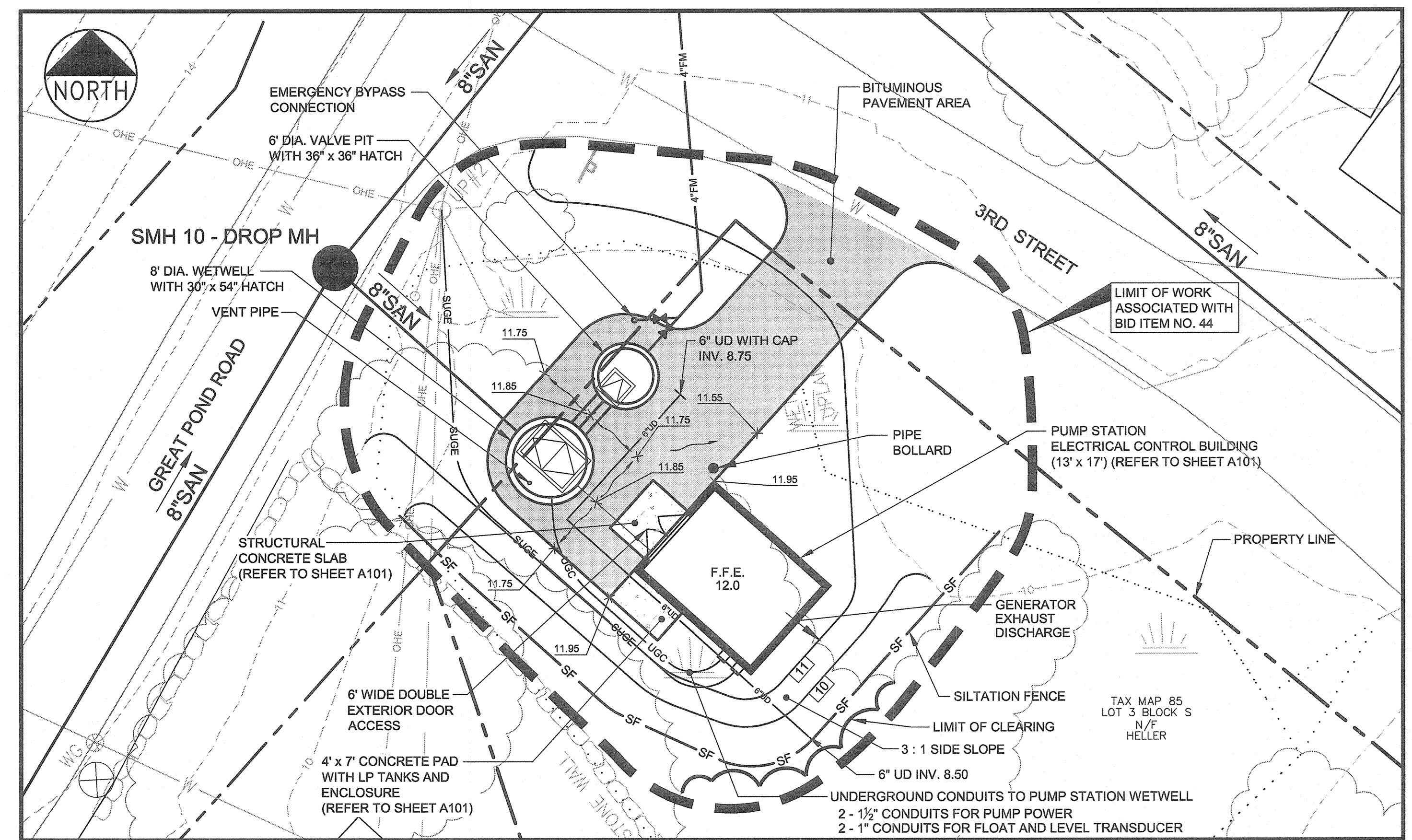
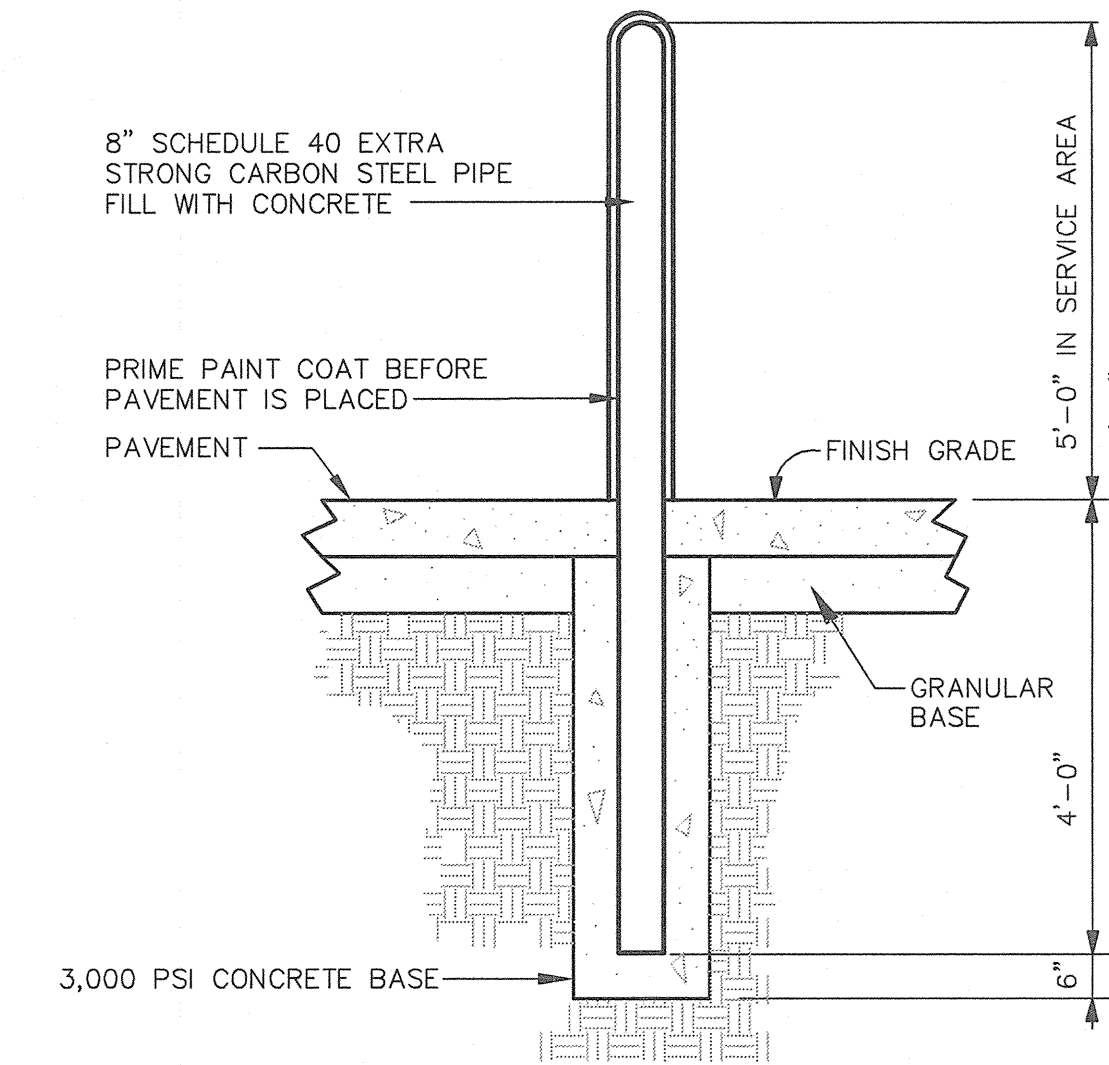
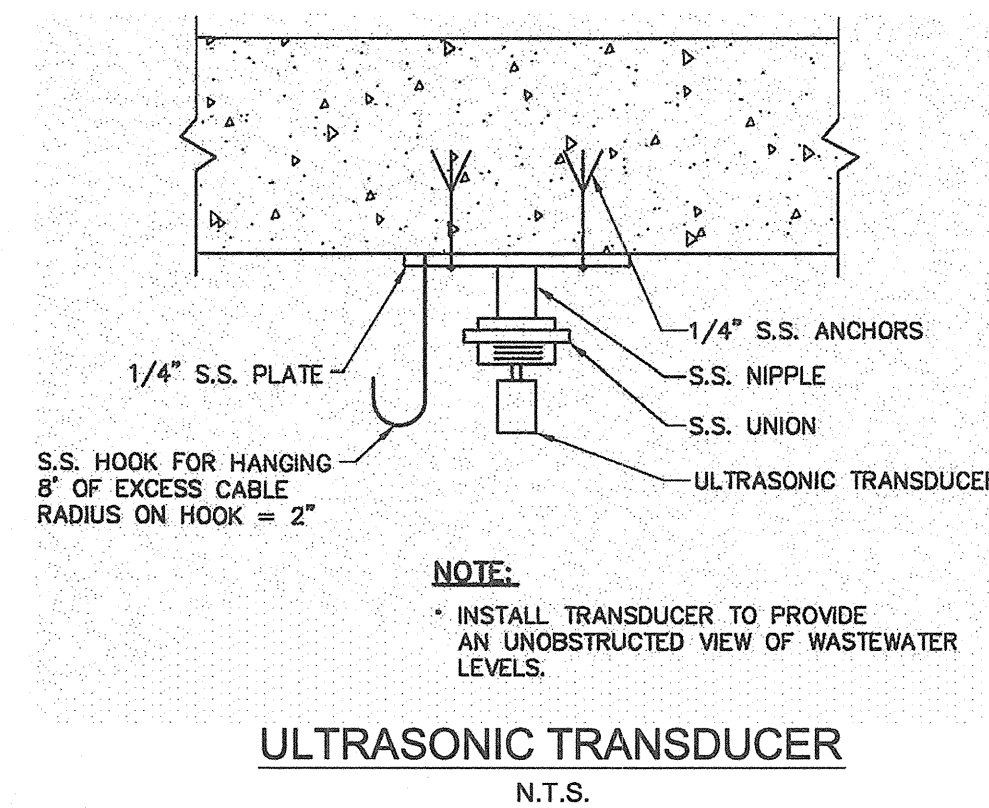


- NOTES:**
1. APPLY TACK COAT BETWEEN BINDER AND SURFACE COURSES.
 2. ALL MATERIALS SHALL CONFORM TO MDOT SPECIFICATIONS, LATEST REVISION.
 3. COMPACTION OF ALL MATERIALS TO BE IN ACCORDANCE WITH SPECIFICATIONS.



PUMP STATION SITE PLAN
SCALE: 1" = 10'



NOTES:

1. CONCRETE: 5,000 PSI @ 28 DAYS.
2. CEMENT: TYPE III PER ASTM C150-81.
3. DESIGN LOADING: H-20 PER ASTM C-478.
4. FOLLOW MANUFACTURER'S INSTRUCTIONS FOR SEALING JOINTS BETWEEN PRECAST SECTIONS. PROVIDE TWO RINGS OF 1-INCH DIAMETER BUTYL RUBBER SEALANT. POINT JOINTS INSIDE AND OUT WITH BUTYL CAULK.
5. WATERPROOF ALL EXTERIOR BELOW GRADE SURFACES WITH WATERPROOFING SEALANT, FIELD APPLIED TO A DRY SURFACE UNDER MANUFACTURER'S RECOMMENDED AMBIENT CONDITIONS TO A THICKNESS OF 55 MILS.
6. COAT INTERIOR OF WET WELL WITH COAL TAR EPOXY; 3 COATS WITH A TOTAL DRY FILM THICKNESS NOT LESS THAN 15 MILS.
7. ALL CONDUIT AND PIPE ENTRANCES SHALL BE SEALED WITH RUBBER LINK-TYPE SEAL SYSTEM.
8. BACKFILL AROUND PUMP STATION WET WELL AND VALVE PIT CHAMBER WITH STRUCTURAL FILL COMPACTED TO 95% OF OPTIMUM DRY DENSITY. STRUCTURAL FILL MATERIAL SHALL MEET THE FOLLOWING GRADATION REQUIREMENTS.

SIEVE SIZE	PERCENT PASSING
4 - INCH	100
3 - INCH	90 TO 100
3/4 - INCH	25 TO 90
NO. 40	0 TO 30
NO. 200	0 TO 5

2	01.31.13	RELEASED FOR BIDS
1	01.10.13	90% REVIEW SET
REV	DATE	DESCRIPTION
REVISIONS		
P.E. JOSEPH A. LAVERRIERE LIC. #7417		

PROJECT PEAKS ISLAND - PORTLAND, MAINE SEWERAGE EXTENSIONS & WATER MAIN RENEWAL ISLAND AVENUE AND WINDING WAY AREAS	 DeLUCA-HOFFMAN ASSOCIATES, INC. 778 MAIN STREET, SUITE 8 SOUTH PORTLAND, ME 04106 207.775.1121 WWW.DELUCAHOFFMAN.COM
SHEET TITLE GREAT POND ROAD PUMP STATION SITE PLAN & DETAILS	
CLIENT PORTLAND WATER DISTRICT	DRAWN: CDD DATE: DEC. 2012 DESIGNED: JAL SCALE: AS NOTED CHECKED: JAL JOB NO. 3134 FILE NAME: 3134-PS DETAILS SHEET S-1