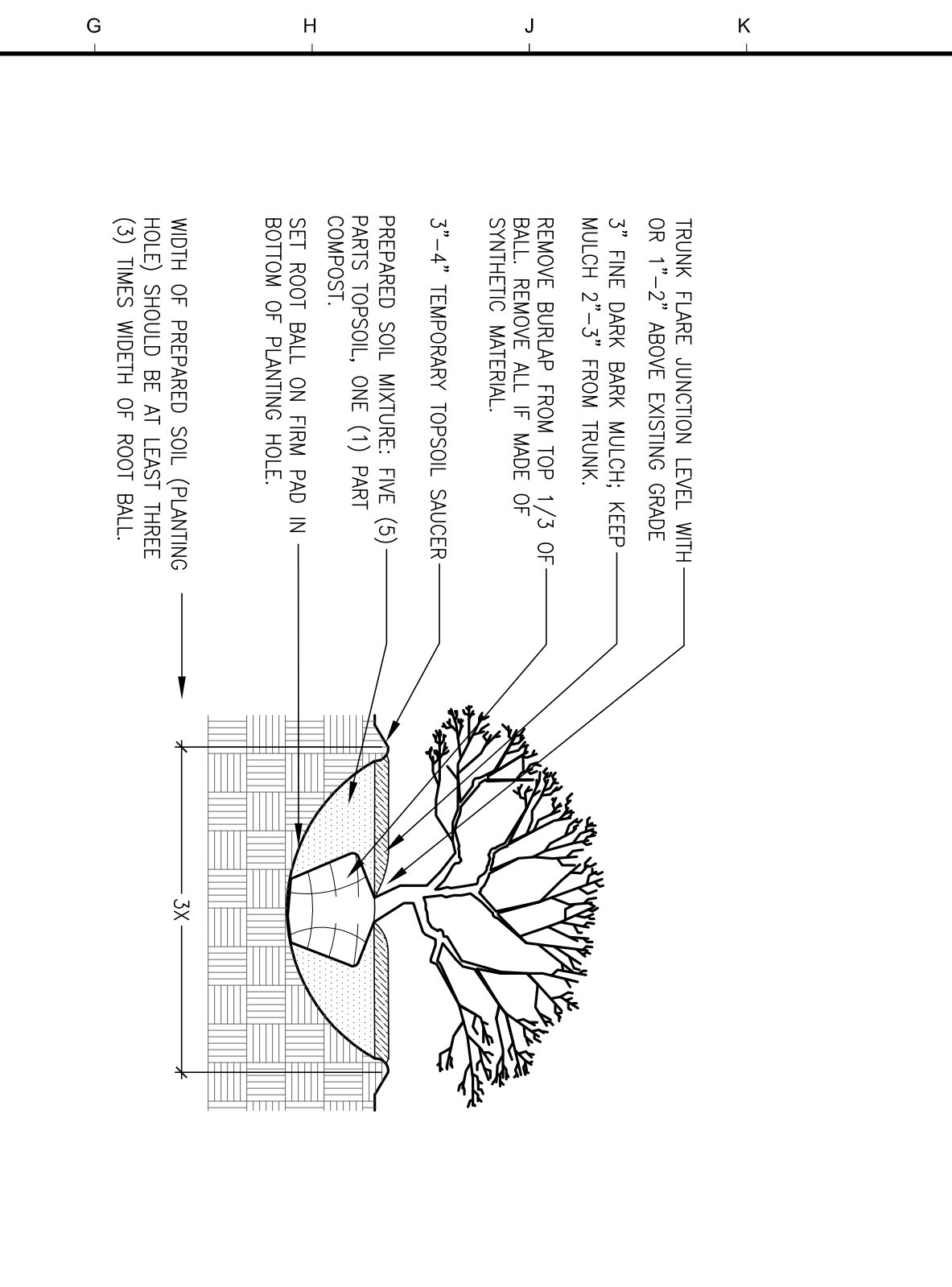


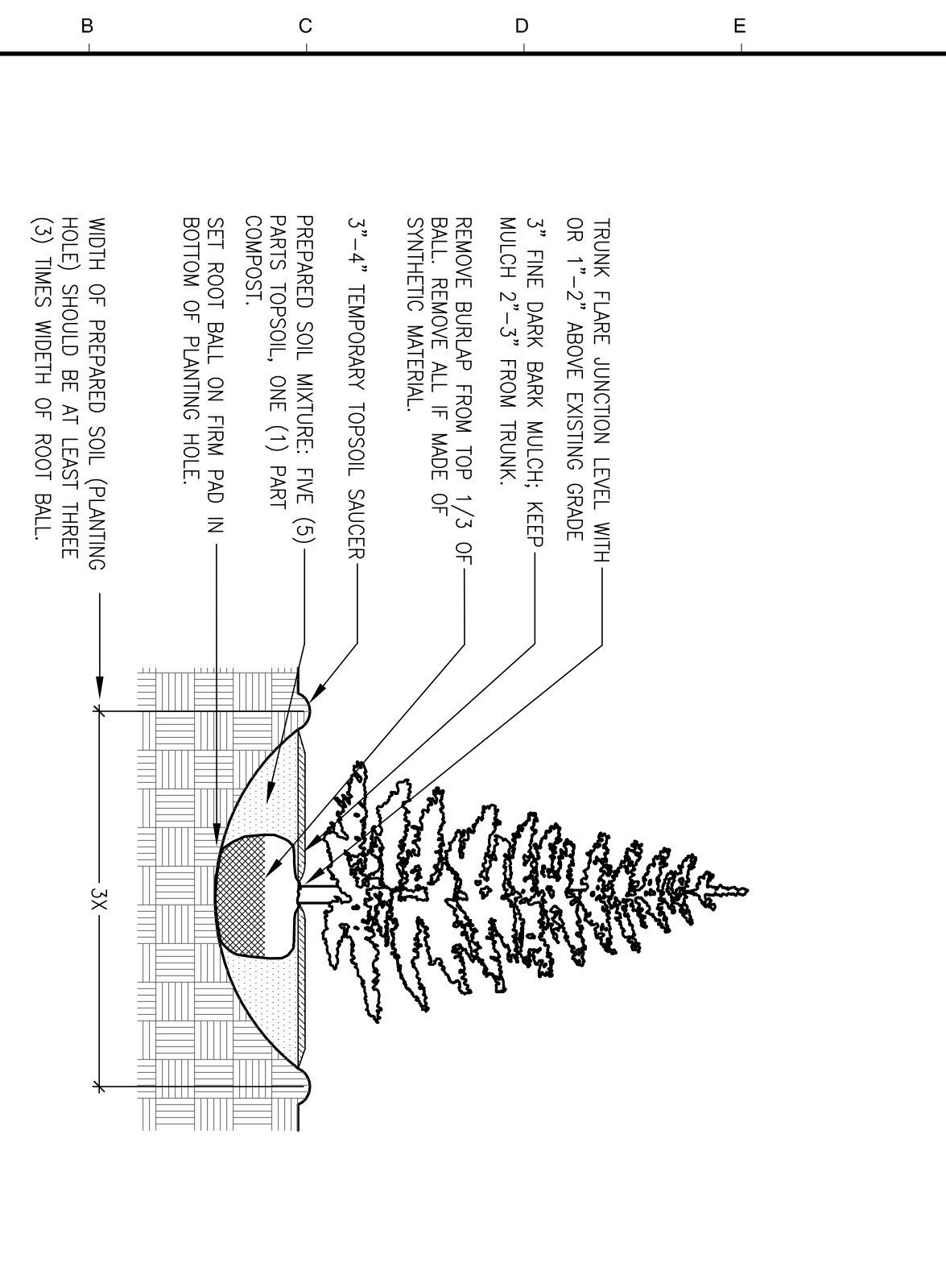
**L1 PERENNIAL PLANTING SECTION**

N.T.S.



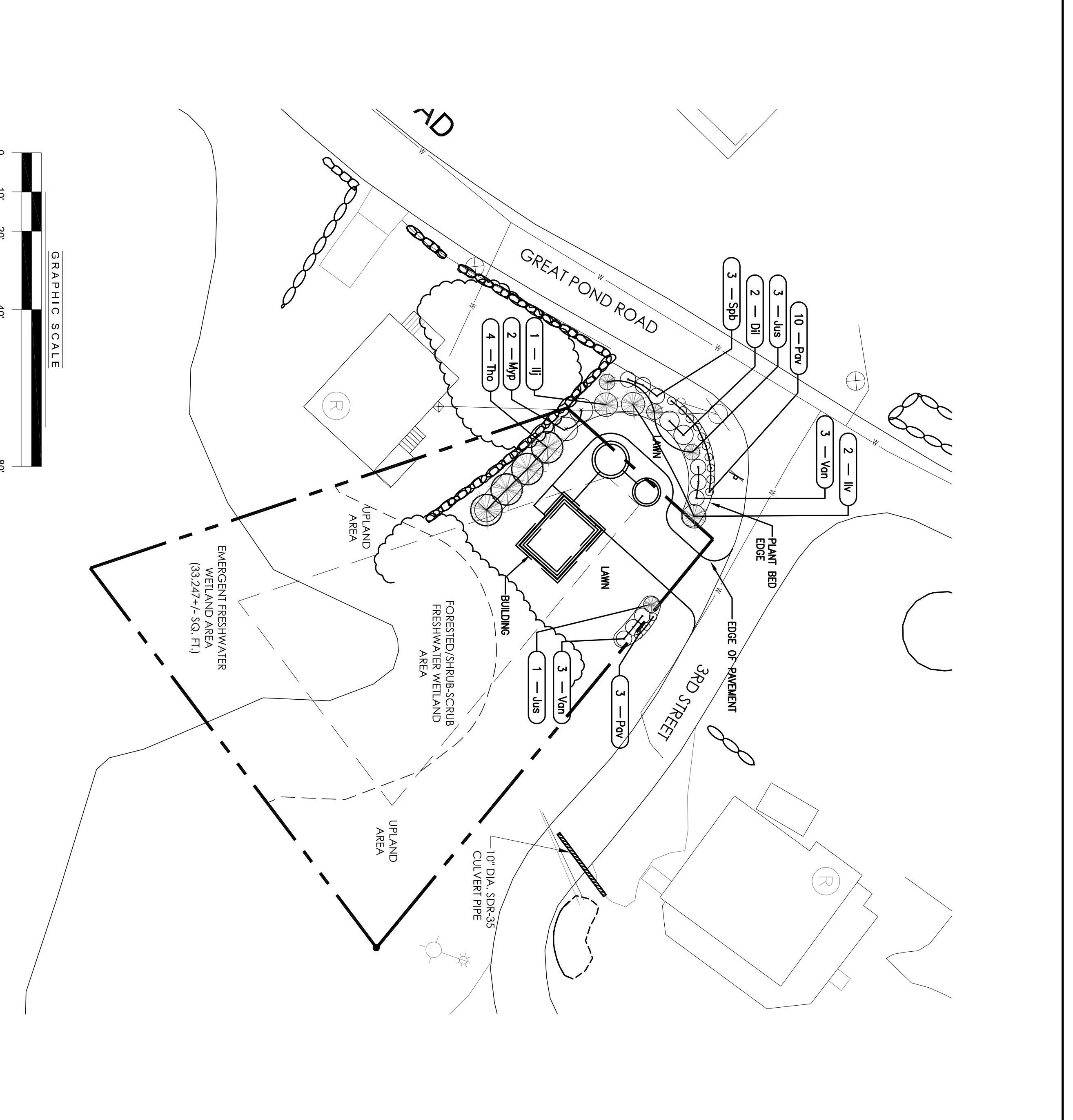
**F1 SHRUB PLANTING SECTION**

N.T.S.



**A1 EVERGREEN TREE PLANTING SECTION**

N.T.S.

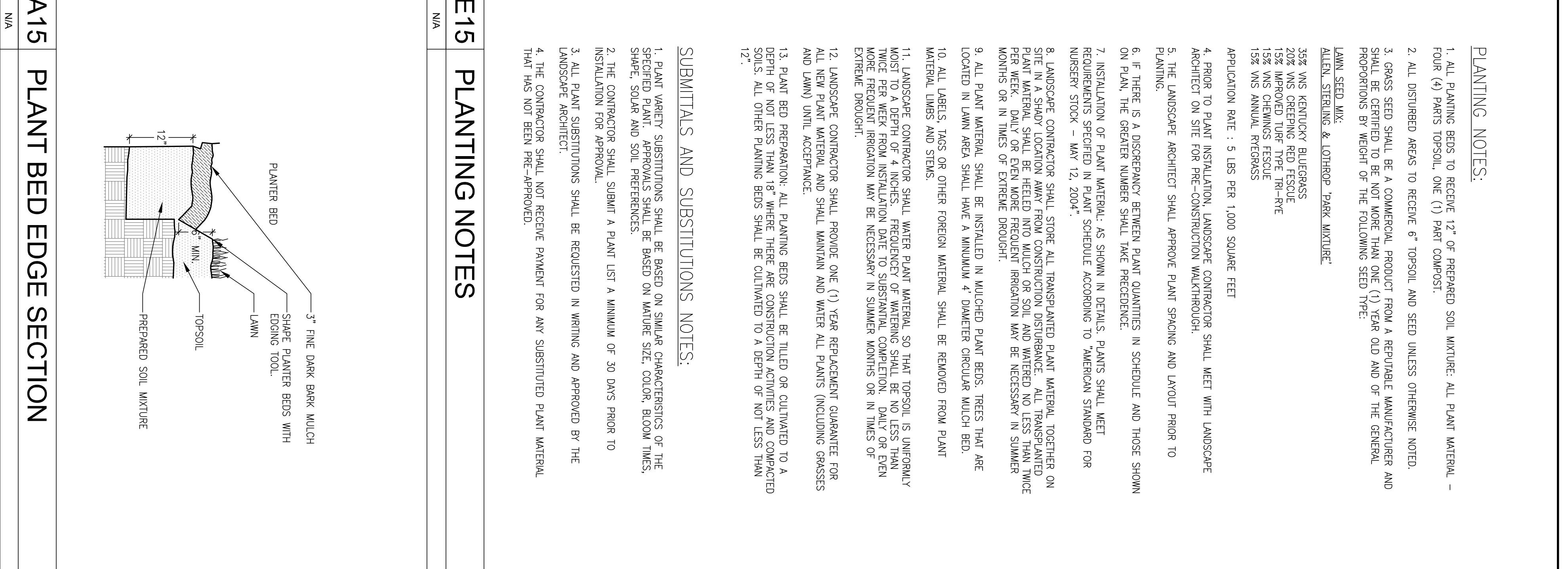


**A6 LANDSCAPE PLAN & PLANT SCHEDULE**

1" = 20'

**Plant Schedule**

| KEY | BOTANICAL NAME                      | COMMON NAME                | SIZE   | COUNT | TYPE      | NOTES                          |
|-----|-------------------------------------|----------------------------|--------|-------|-----------|--------------------------------|
| Tho | <i>Thuja occidentalis 'Tachy'</i>   | Mission Arborvitae         | 5-6"   | 4     | Tree      | 18x12, Native, RTL             |
| 11  | <i>Ilex verticillata Jim Dandy</i>  | Jim Dandy Winterberry      | 3"     | 1     | Shrub     | 8x7", Native                   |
| 11v | <i>Ilex verticillata Red Sprite</i> | Red Sprite Winterberry     | 3"     | 2     | Shrub     | 4x6", Native                   |
| Jus | <i>Juniperus squamata Holger</i>    | Holger Juniper             | 2-2.5" | 4     | Shrub     | 3x4", new growth yellow        |
| Myp | <i>Myrica pennsylvanica</i>         | Northern Bayberry          | 3"     | 2     | Shrub     | 8x8", Native                   |
| Van | <i>Vaccinium Northblue</i>          | Northblue Blueberry Hybrid | 2-2.5" | 6     | Shrub     | 2.5", self-fruitful            |
| Dil | <i>Diervilla bicolora</i>           | Bush Honeysuckle           | 3"     | 2     | shrub     | 5x6 native                     |
| Spb | <i>Spiraea betulifolia Tor</i>      | Birchleaf Spiraea          | 2-2.5" | 3     | shrub     | 3-4"                           |
| Pov | <i>Panicum virgatum Shenandoah</i>  | Shenandoah Switch Grass    | 2 gal. | 13    | Perennial | 3x3", Native, burgundy in fall |

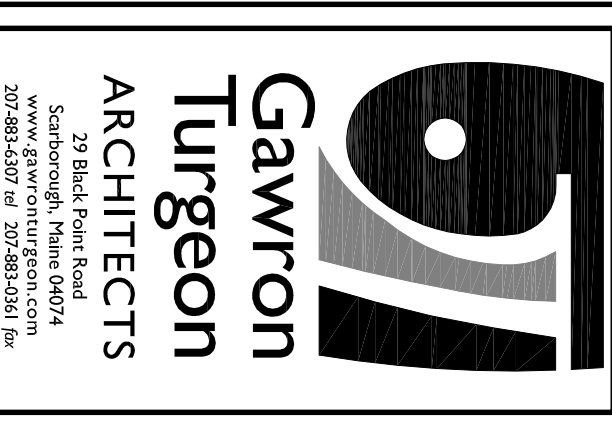
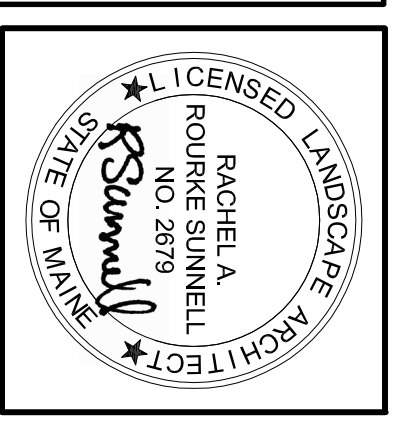


**E15 PLANTING NOTES**

N/A

**A15 PLANT BED EDGE SECTION**

N/A



**PEAKS ISLAND - PORTLAND MAINE**  
**SEWERAGE EXTENSIONS & WATER MAIN RENEWAL**

**REVISIONS**

| # | DATE    | DESCRIPTION      |
|---|---------|------------------|
| A | 1.2.13  | 90% Review Set   |
| 1 | 1.31.13 | Released for Bid |

|                |           |
|----------------|-----------|
| DATE:          | 1.2.13    |
| PROJECT #:     | 070312    |
| DRAWN BY:      | KD        |
| CHECKED BY:    | RS        |
| DRAWING SCALE: | VARIABLES |

**SHEET TITLE**  
**LANDSCAPE PLAN**  
**DETAILS & NOTES**

**L101**

© COPYRIGHT 2009  
 ALL RIGHTS RESERVED  
 THIS DOCUMENT IS THE PROPERTY OF  
 GAWRON ARCHITECTS & ENGINEERS  
 AND IS NOT TO BE REPRODUCED OR  
 TRANSMITTED IN ANY FORM OR BY ANY  
 MEANS, ELECTRONIC OR MECHANICAL,  
 INCLUDING PHOTOCOPYING, RECORDING,  
 OR BY ANY INFORMATION STORAGE AND  
 RETRIEVAL SYSTEM, WITHOUT THE  
 WRITTEN PERMISSION OF GAWRON  
 ARCHITECTS & ENGINEERS