

# 15RLS2 Submittal



## AOU15RLS2, ASU15RLS2 Inverter Driven Heat Pump

Jcb Name: Michelle Brown / Butch Sullins  
 Location: 24 3<sup>rd</sup> Street, Peaks Island  
 Engineer: n/a  
 Submitted to: City of Portland  
 Submitted by: Loggin Energy  
 Reference: n/a

Approval: \_\_\_\_\_  
 Date: \_\_\_\_\_  
 Construction: \_\_\_\_\_  
 Unit #: \_\_\_\_\_  
 Drawing #: \_\_\_\_\_

**Outdoor Unit Power** 208-230VAC-1Ph-60Hz  
**Available Voltage Range** 187-253VAC  
**Fuse Size, Max.** 20A  
**MCA** 13.5A

**Compressor** Inverter Driven Variable Speed DC Rotary  
 No used 1  
 Output 1000W  
**Lubricant Oil** POE (RB68)

**Fan type** Propeller  
**Motor Output** 115W  
**Airflow Rate** Cooling/Heating (High) 1206 / 1082CFM

**Refrigerant** R410A  
**Outdoor Unit** 2lbs 12.0oz  
**Control** Electronic Expansion Valve  
**O.D. Discharge** (in) 1/4"(Flare)  
**O.D. Suction** (in) 1/2"(Flare)

**Dimensions** H x W x D  
**Uncrated** (in) 24-1/2 x 31-3/32 x 11-11/32  
 (mm) (620 x 790 x 290)  
**Crated** (in) 28-1/16 x 37-7/32 x 15-9/16  
 (mm) (713 x 945 x 395)

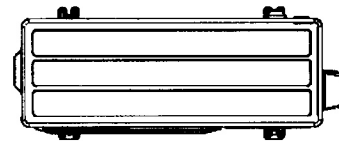
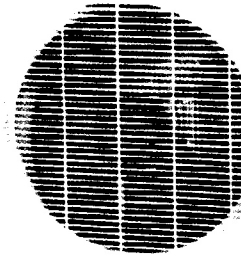
**Weight** Outdoor  
**Net** 86lbs (39kg)  
**Gross Shipping** 95lbs (43kg)

**Cooling**  
**Rated Capacity** 14,500BTU/h  
**Min-Max Capacity** 3,100~18,400BTU/h  
**Rated Power Input** 4.25kw  
**Max. Power Input** 5.40kw  
**SEER** 21.5  
**Outdoor Sound Rating** 51dB

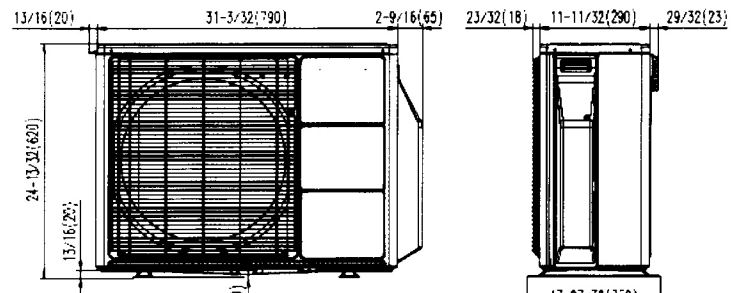
**Heating**  
**Rated Capacity** 18,000BTU/h  
**Min-Max Capacity** 3,100~23,900BTU/h  
**Rated Power Input** 5.28kw  
**Max. Power Input** 7.00kw  
**HSPF** 12  
**Outdoor Sound Rating** 51dB

**Piping Lengths**  
**Max. Piping Length (Total)** 66ft  
**Max. Pipe Height Difference** 49ft  
**Connection method** (Flared)

**Operating Range**  
**Cooling** 14°F~115°F DB  
**Heating** -5°F~75°F DB

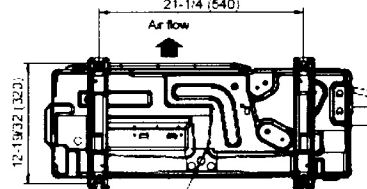


Top view

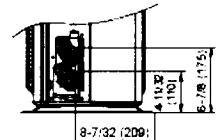


Front view

Side view



Bottom view



Fujitsu General America, Inc.  
 Fairfield, NJ 07004  
 Toll Free: 1-888-888-3424  
 Fax: (973) 836-0447  
[www.fujitsugeneral.com](http://www.fujitsugeneral.com)

Fujitsu products are subject to continuous improvements. Fujitsu reserves the right to modify product design, specifications and information in this data sheet without notice and without incurring any obligations.

Note: Specifications are based on the following conditions.

Power source of specifications : 230V

Cooling: Indoor temperature of 80°F(26.67°C)DB / 67°F(19.44°C)WB, and outdoor temperature of 95°F(35°C)DB/75°F(23.89°C)WB.

Heating: Indoor temperature of 70°F(21.11°C)DB / 60°F(15.56°C)WB, and outdoor temperature of 47°F(8.33°C)DB/43°F(6.11°C)WB.

Pipe length : 24ft. 7in.(7.5m), Height difference : 0 ft.(0m) [Outdoor unit - Indoor unit]





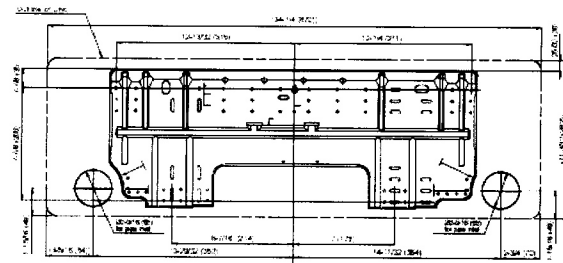
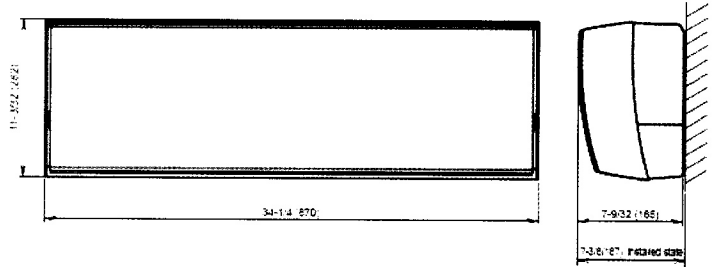
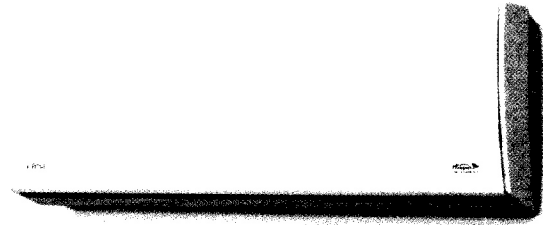
Indoor Unit Power	208-230/VAC-1Ph-60Hz
Available Voltage Range	187-253VAC
Fan type	Cross flow
Motor Output	29W
MCA	0.4A

<b>Sound Pressure Level</b>		
Cooling	Lo-Hi	25-45dB
Heating	Lo-Hi	25-45dB

<b>Airflow rate</b>		
Cooling	Lo-Hi	229-529dBF
Heating	Lo-Hi	253-559dBF

<b>Dimensions</b>		
Unrated		
	(in)	11-3/32 x 34-1/4 x 7-9/32
	(mm)	(282 x 870 x 185)
Crated		
	(in)	9-23/32 x 36-7/32 x 14-11/16
	(mm)	(247 x 920 x 373)

<b>Weight</b>		
Indoor		
Net		21lbs (9.5kg)
Gross Shipping		27lbs (12kg)



Fujitsu General America, Inc.  
 Fairfield, NJ 07004  
 Toll Free: 1-888-888-3424  
 Fax: (973) 836-0447  
 www.fujitsugeneral.com

Fujitsu products are subject to continuous improvements. Fujitsu reserves the right to modify product design, specifications and information in this data sheet without notice and without incurring any obligations.



# 9RLS2 Submittal



## AOU9RLS2, ASU9RLS2 Inverter Driven Heat Pump

Job Name: Michelle Brown / Butch Sullivan  
 Location: 243rd Street, Peaks Island  
 Engineer: n/a  
 Submitted to: City of Portland  
 Submitted by: Joggen Energy  
 Reference: n/a

Approval: \_\_\_\_\_  
 Date: \_\_\_\_\_  
 Construction: \_\_\_\_\_  
 Unit #: \_\_\_\_\_  
 Drawing #: \_\_\_\_\_

**Outdoor Unit Power** 208-230VAC-1Ph-60Hz  
 Available Voltage Range 187-253VAC  
 Fuse Size, Max. 20A  
 MCA 10.5A

**Compressor** Inverter Driven Variable Speed DC Rotary  
 No. used 1  
 Output 850W  
 Lubricant Oil POE (RB68)

**Fan type** Propeller  
 Motor Output 115W  
 Airflow Rate Cooling/Heating (High) 1082 / 1840CFM

**Refrigerant** 410A  
 Outdoor Unit 2lbs 10oz  
 Control Electronic Expansion Valve  
 O.D. Discharge (in) 1/4" (Flare)  
 O.D. Suction (in) 3/8" (Flare)

**Dimensions** H x W x D  
 Uncrated (in) 24-1/2 x 31-3/32 x 11-11/32  
 (mm) (620 x 790 x 290)  
 Crated (in) 28-1/16 x 37-7/32 x 15-9/16  
 (mm) (713 x 945 x 395)

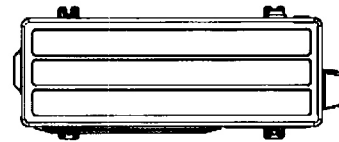
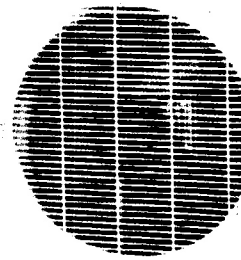
**Weight** Outdoor  
 Net 84lbs (38kg)  
 Gross Shipping 93lbs (42kg)

**Cooling**  
 Rated Capacity 9,000BTU/h  
 Min-Max Capacity 3,100~12,000BTU/h  
 Rated Power Input 2.64kw  
 Max. Power Input 3.60kw  
 SEER 27.2  
 Outdoor Sound Rating 48dB

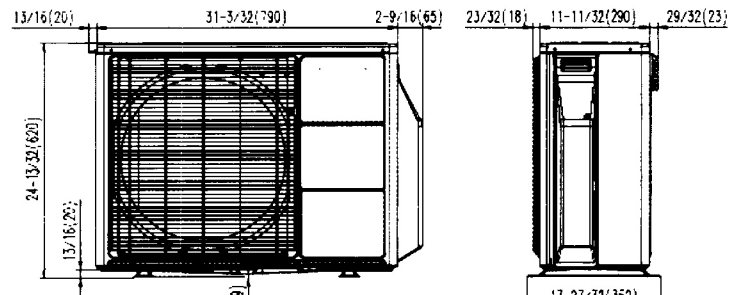
**Heating**  
 Rated Capacity 12,000BTU/h  
 Min-Max Capacity 3,100~22,000BTU/h  
 Rated Power Input 3.52kw  
 Max. Power Input 6.45kw  
 HSPF 12.5  
 Outdoor Sound Rating 49dB

**Piping Lengths**  
 Max. Piping Length (Total) 66ft  
 Max. Pipe Height Difference 49ft  
 Connection method (Flared)

**Operating Range**  
 Cooling 14°F~115°F DB  
 Heating -5°F~75°F DB

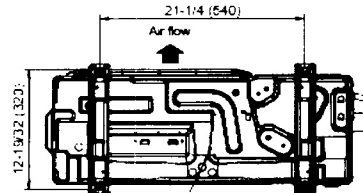


Top view



Front view

Side view



Bottom view

Fujitsu General America, Inc.  
 Fairfield, NJ 07004  
 Toll Free: 1-888-888-3424  
 Fax: (973) 836-0447  
 www.fujitsugeneral.com

Fujitsu products are subject to continuous improvements. Fujitsu reserves the right to modify product design, specifications and information in this data sheet without notice and without incurring any obligations.

Notes: Specifications are based on the following conditions.

Power source of specifications : 230V

Cooling: Indoor temperature of 80°F(26.67°C)DB / 67°F(19.44°C)WB, and outdoor temperature of 95°F(35°C)DB/75°F(23.89°C)WB.

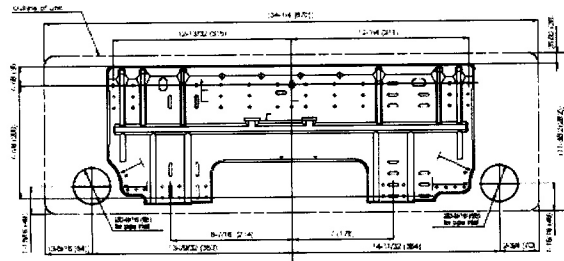
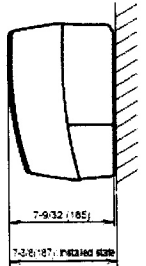
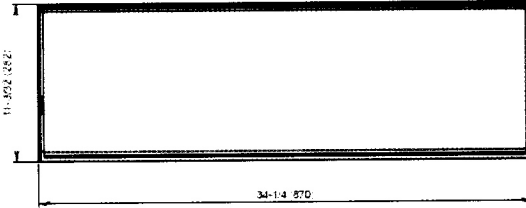
Heating: Indoor temperature of 70°F(21.11°C)DB / 60°F(15.56°C)WB, and outdoor temperature of 47°F(8.33°C)DB/43°F(6.11°C)WB.

Piping length : 24ft. 7in.(7.5m), Height difference : 0 ft.(0m) [Outdoor unit - Indoor unit]





<b>Indoor Unit Power</b>	208-230VAC-1Ph-60Hz	
<b>Available Voltage Range</b>	187-253VAC	
<b>Fan type</b>	Cross flow	
<b>Motor Output</b>	29W	
<b>MCFL</b>	0.4A	
<b>Sound Pressure Level</b>		
Cooling	Lo-Hi	21-43dB
Heating	Lo-Hi	21-43dB
<b>Airflow rate</b>		
Cooling	Lo-Hi	194-500dB
Heating	Lo-Hi	194-500dB
<b>Dimensions</b>	H x W x D	
Uncrested	(in)	11-3/32 x 34-1/4 x 7-9/32
	(mm)	(282 x 870 x 185)
Crated	(in)	9-23/32 x 36-7/32 x 14-11/16
	(mm)	(247 x 920 x 373)
<b>Weight</b>	Indoor	
Net	21lbs (9.5kg)	
Gross Shipping	27lbs (12kg)	



Fujitsu General America, Inc.  
Fairfield, NJ 07004  
Toll Free: 1-888-888-3424  
Fax: (973) 836-0447  
www.fujitsugeneral.com

Fujitsu products are subject to continuous improvements. Fujitsu reserves the right to modify product design, specifications and information in this data sheet without notice and without incurring any obligations.

