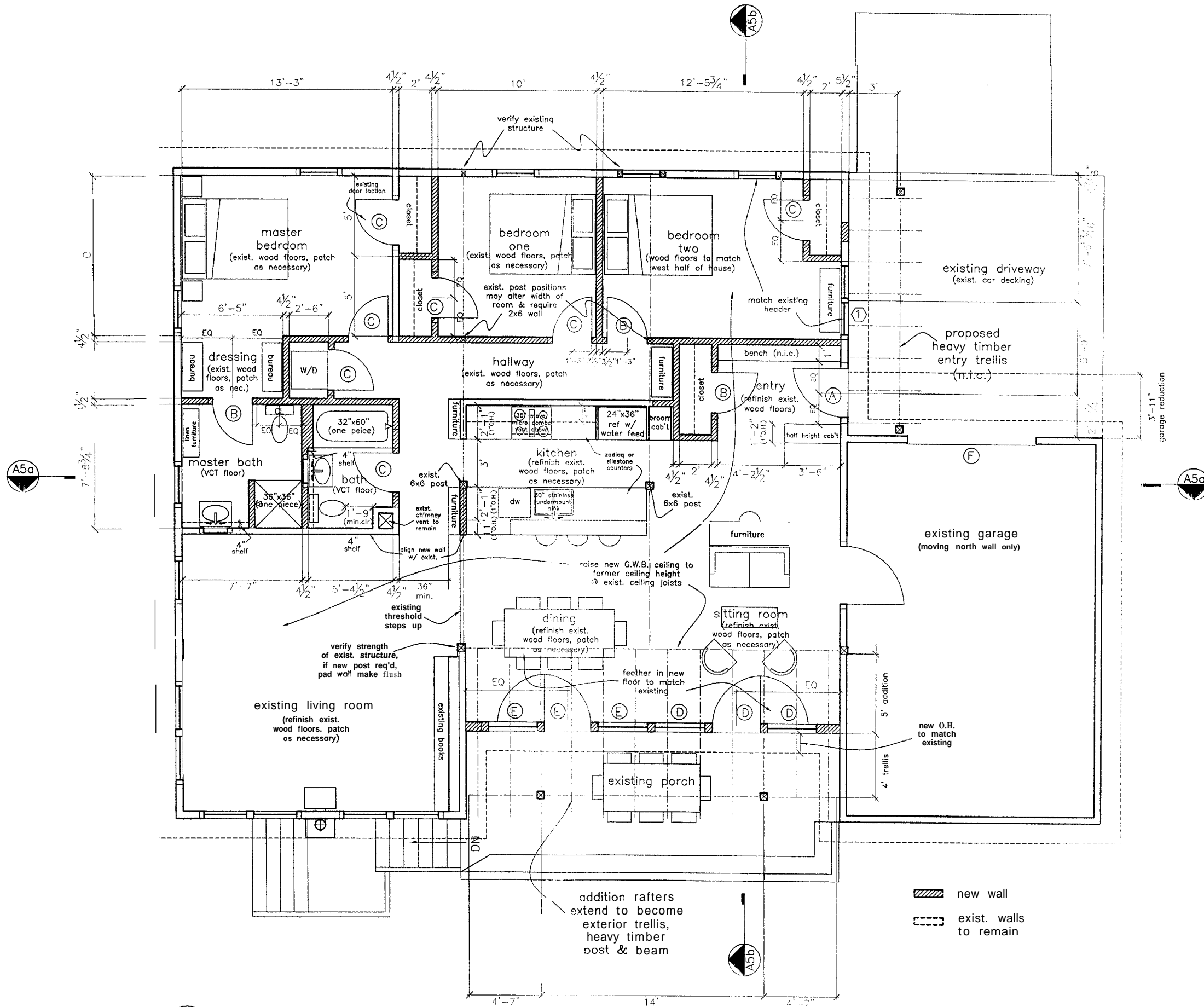
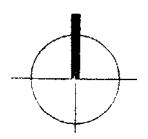


proposed:
first floor plan



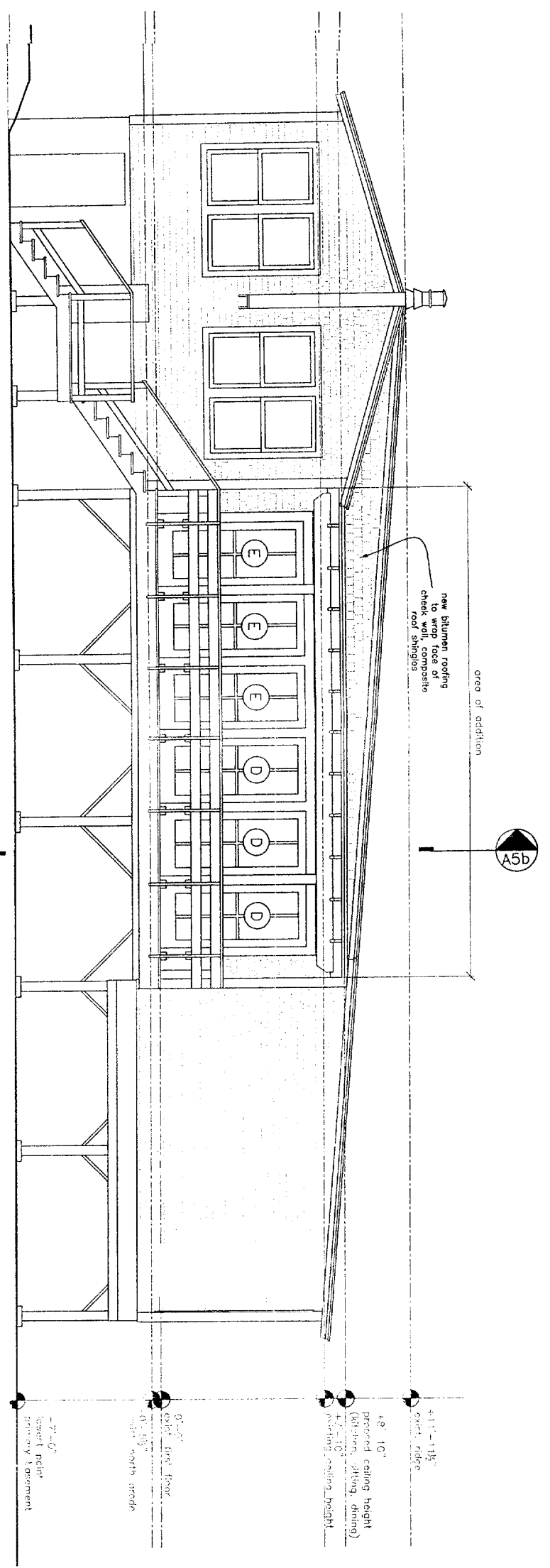
(A) Proposed First Floor Plan
1/4" = 1'-0"



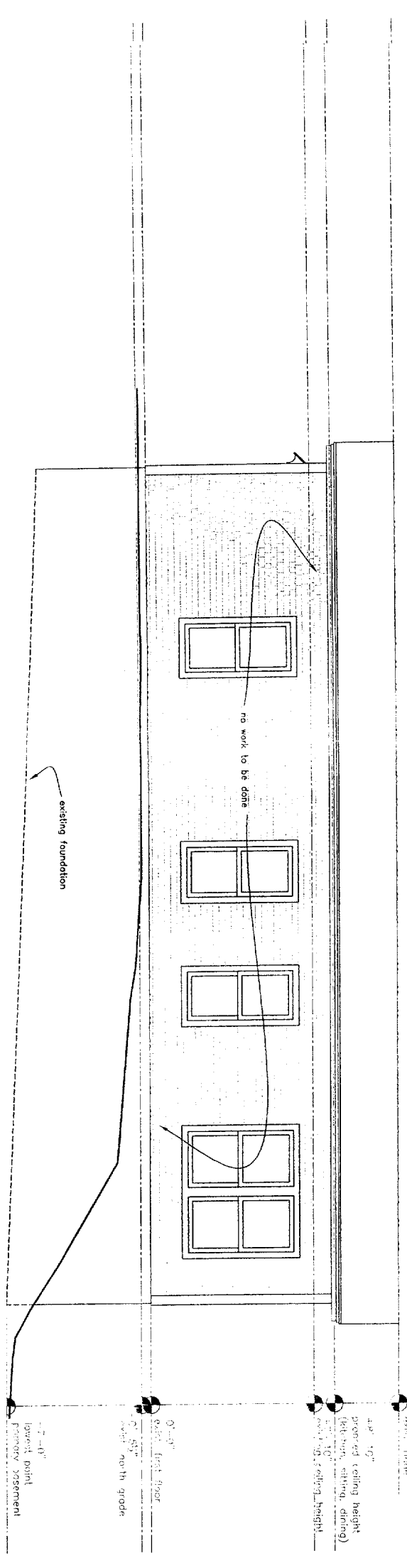
Maguire Residence

DATE	REVISION
5.23.05	5.26.05 6.13.05
	6.1.05
DRAWN BY	Rachel

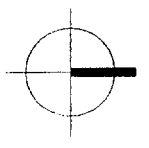
proposed: south and
west elevations



A
Proposed South Elevation
1/4" = 1'-0"

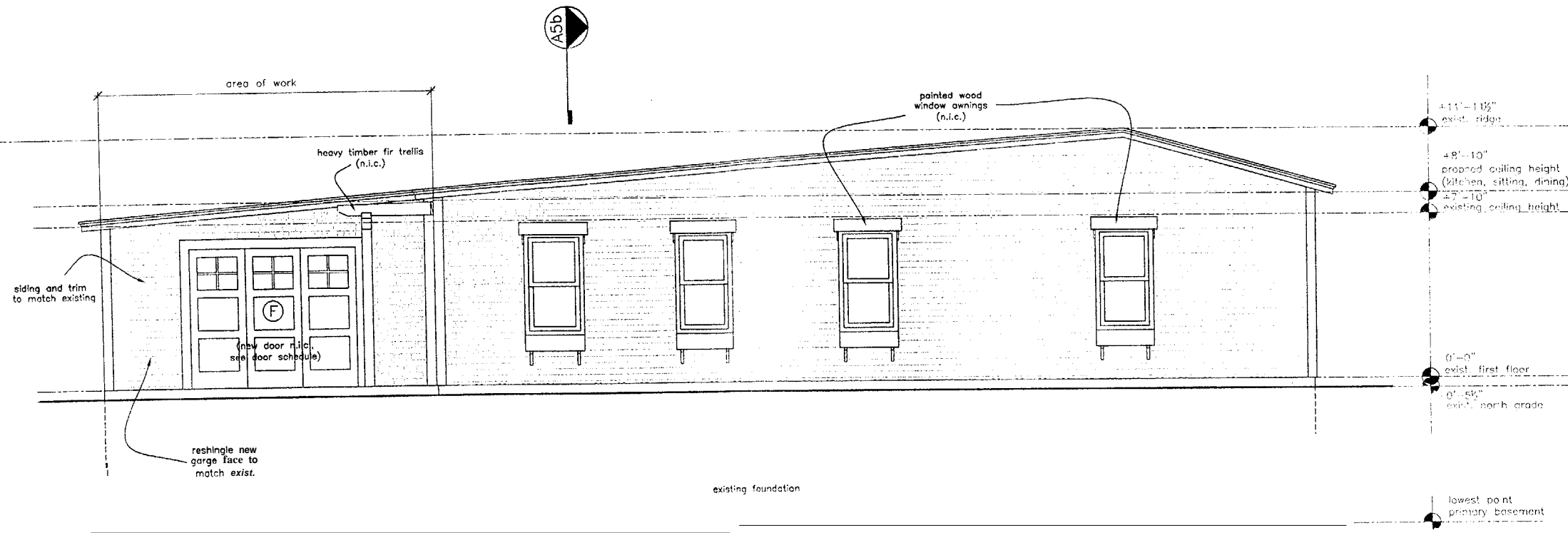


B
Proposed West Elevation
1/4" = 1'-0"

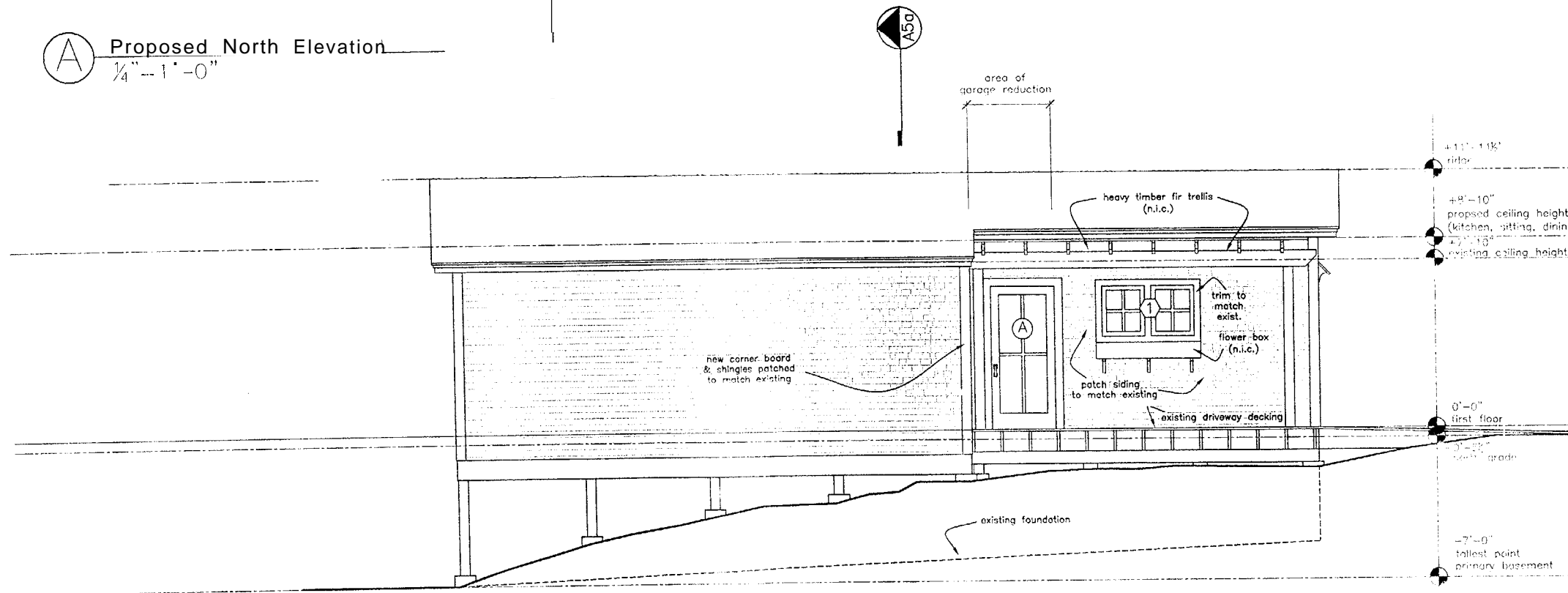


Project	
Maguire Residence	
DATE	REVISED
5.23.05	5.26.05 6.13.05
SCALE	DRAWN BY
1/4" = 1'-0"	Rachel
NOTES	

proposed: north and
east elevations



(A) Proposed North Elevation
1/4" = 1'-0"



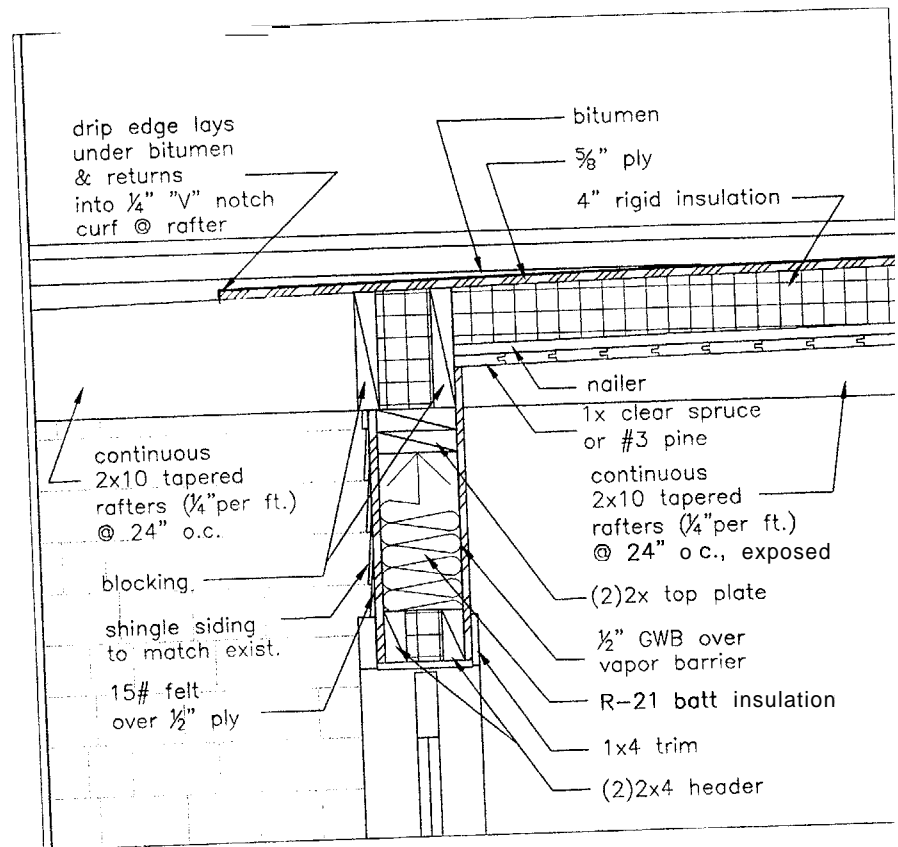
(B) Proposed East Elevation
1/4" = 1'-0"

PROJECT
Maguire Residence

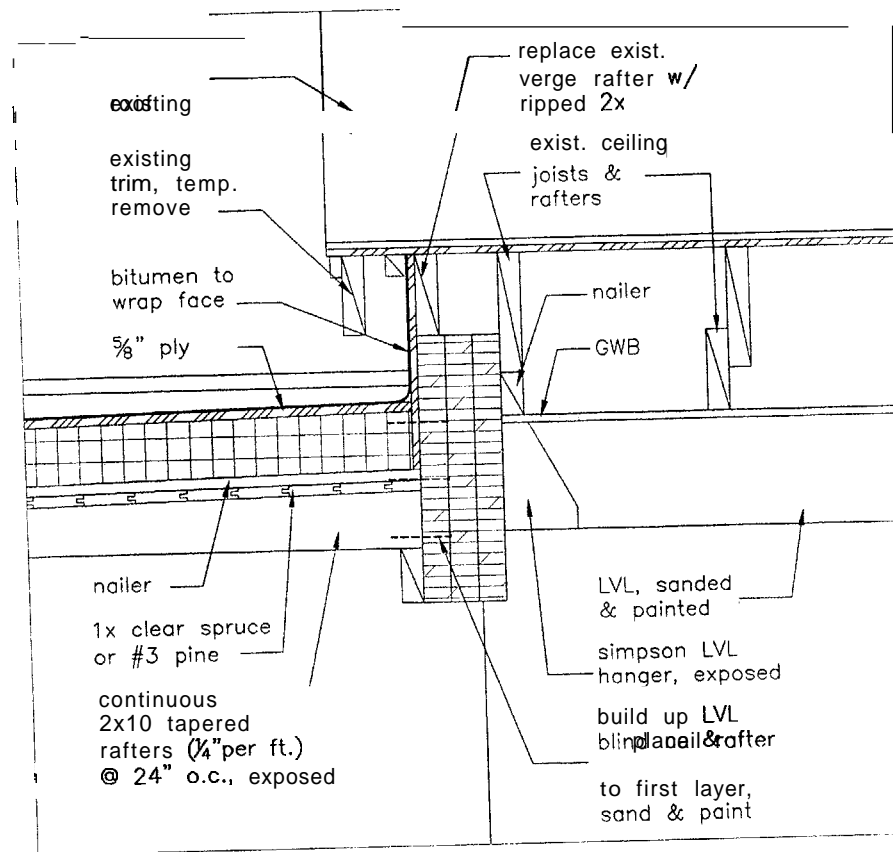
DATE	3.16.05	REVISED	5.26.05 6.13.05
SCALE	1/4" = 1'-0"	DRAWN BY	Rachel

NOTES

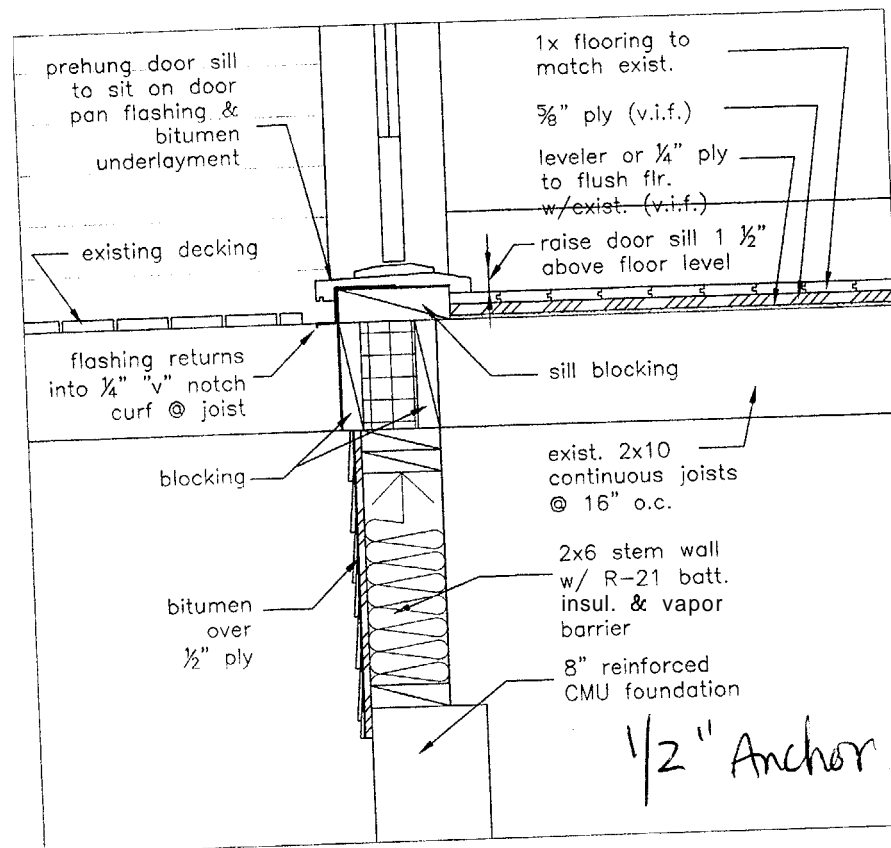
proposed:
details



A Header/Eave Detail
1 1/2" = 1'-0"



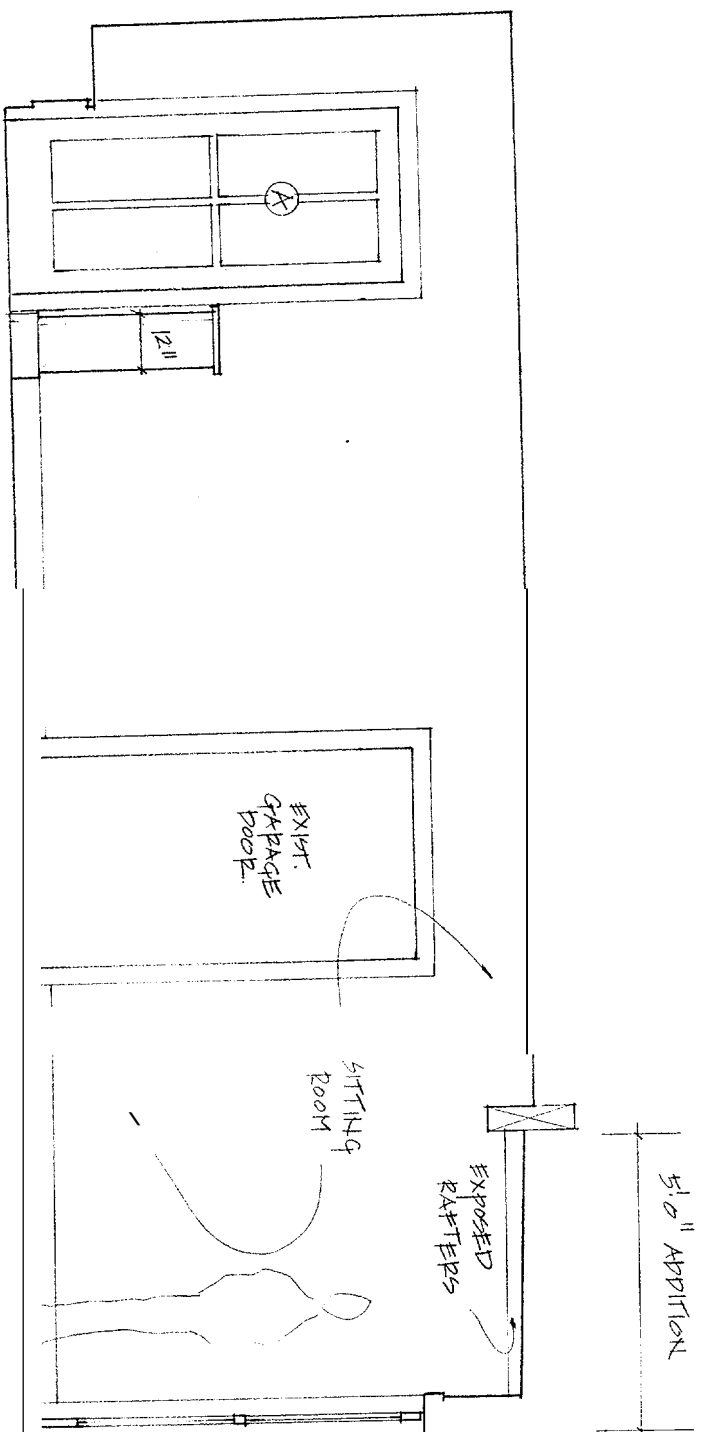
B LVL Detail
1 1/2" = 1'-0"



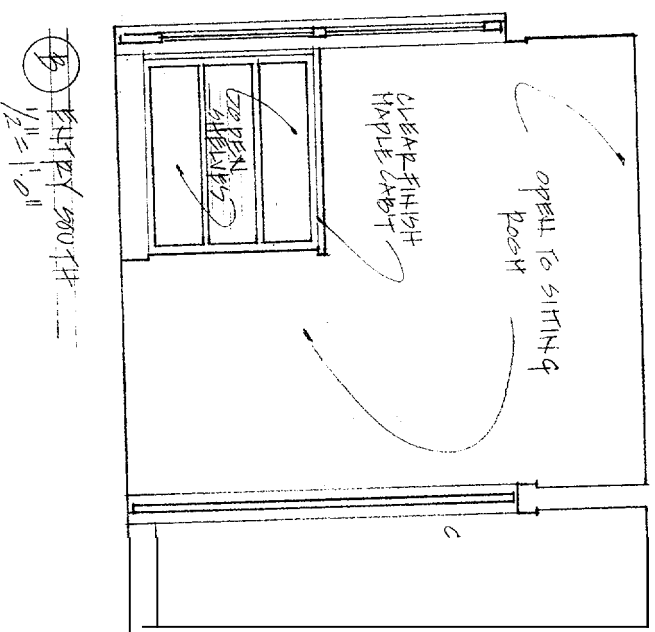
1/2" Anchor 6' O.C.
12" Corners

C Door Sill Detail
1/4" = 1'-0"

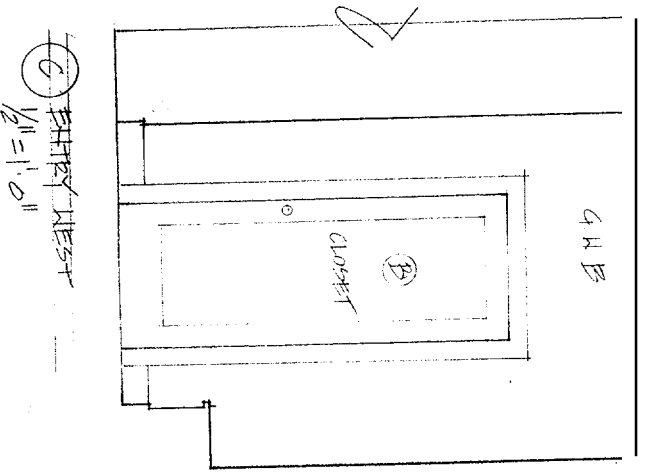
PROJECT Maguire Residence	
DATE 5.23.05	REVISED 5.26.05 6.13.05 6.1.05
SCALE	DRAWN BY Rachel
NOTES	



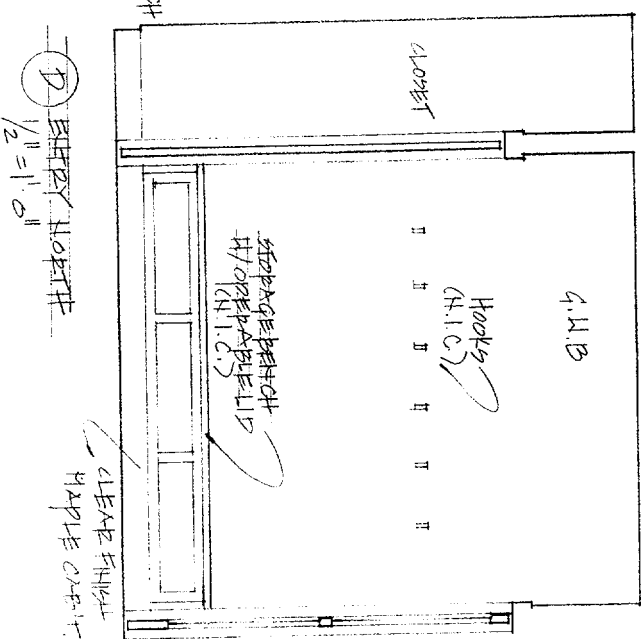
⊗ EXISTING APERTURE
1/2" = 1'-0"



⊗ EXISTING APERTURE
1/2" = 1'-0"



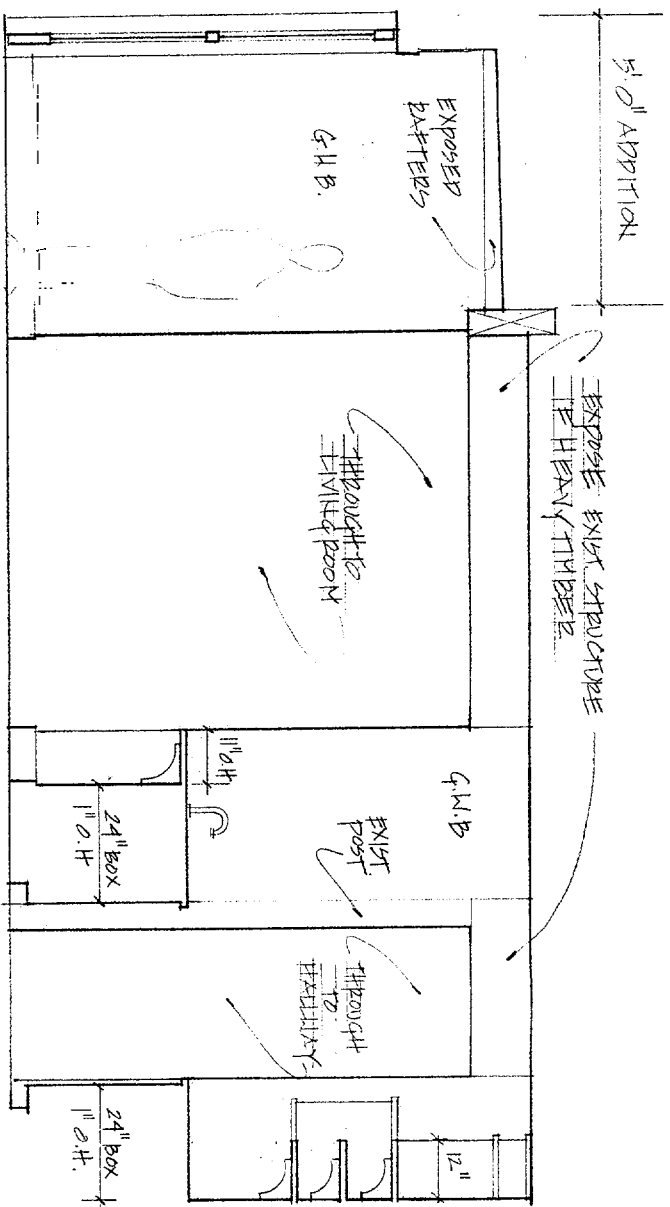
⊗ EXISTING APERTURE
1/2" = 1'-0"



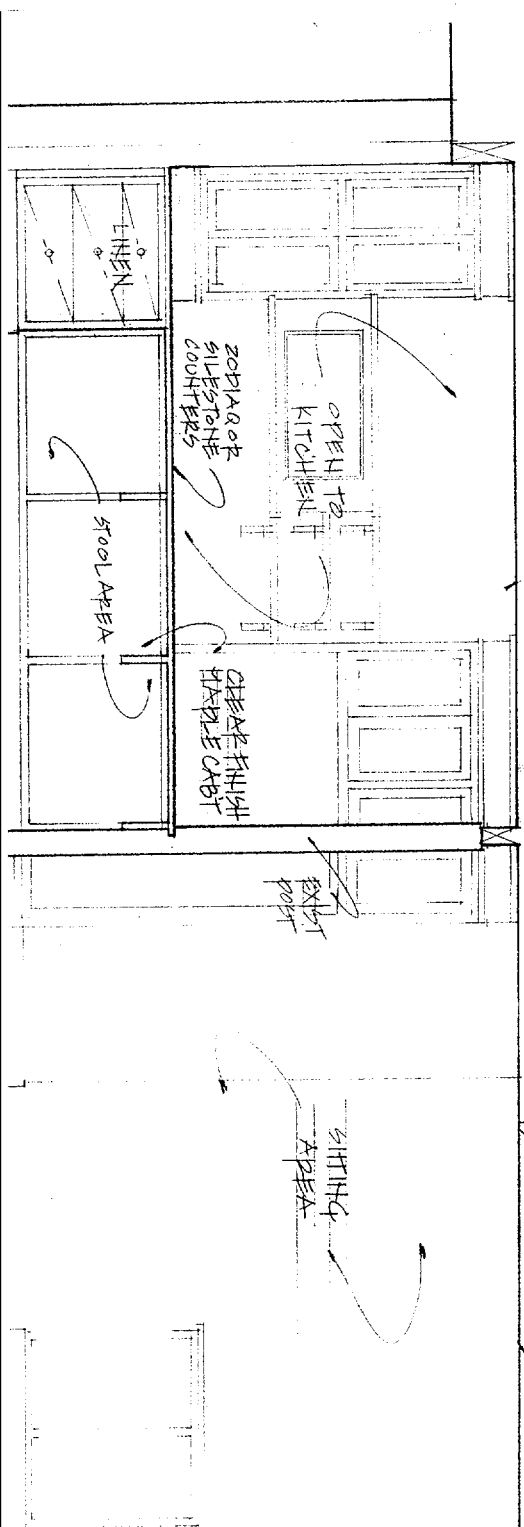
⊗ EXISTING APERTURE
1/2" = 1'-0"

PROJECT	
Maguire Residence	
DATE	5.23.05
REVISION	5.26.05 6.13.05
SCALE	6.1.05
DRAWN BY	Rachel
NOTES	

interior elevations



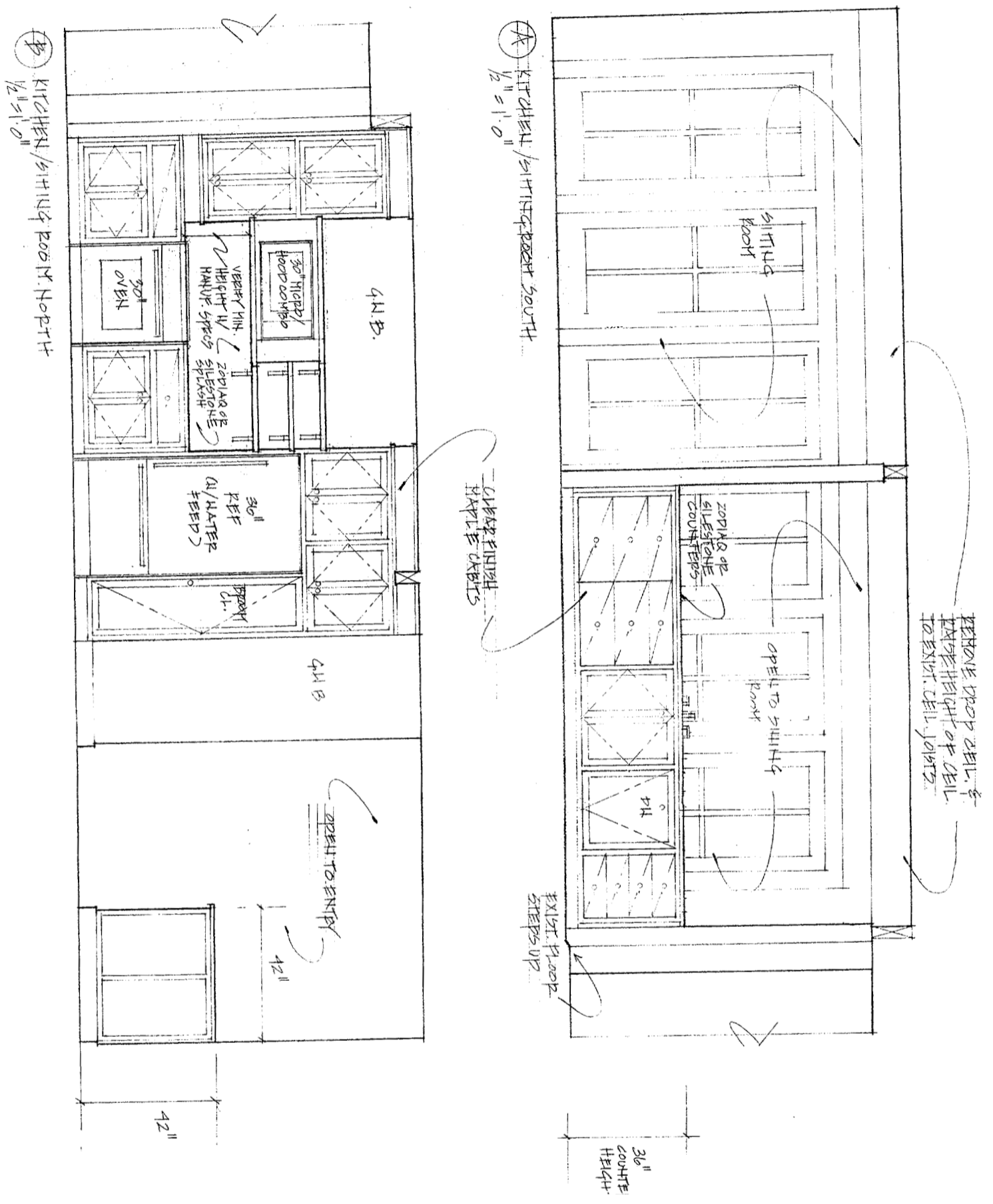
A DINING / KITCHEN WEST
1/2" = 1'-0"



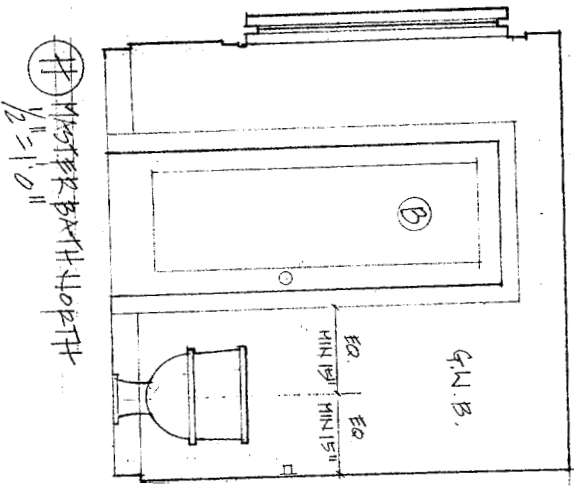
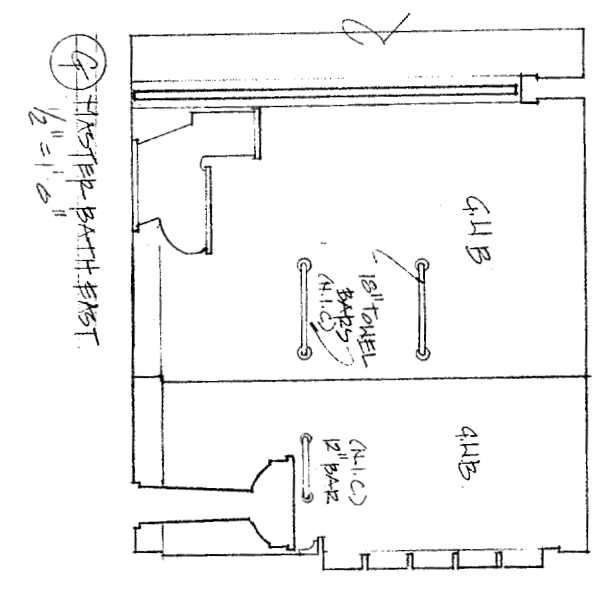
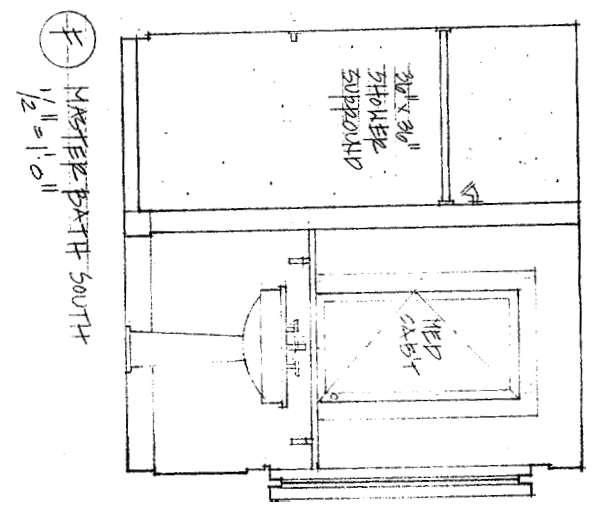
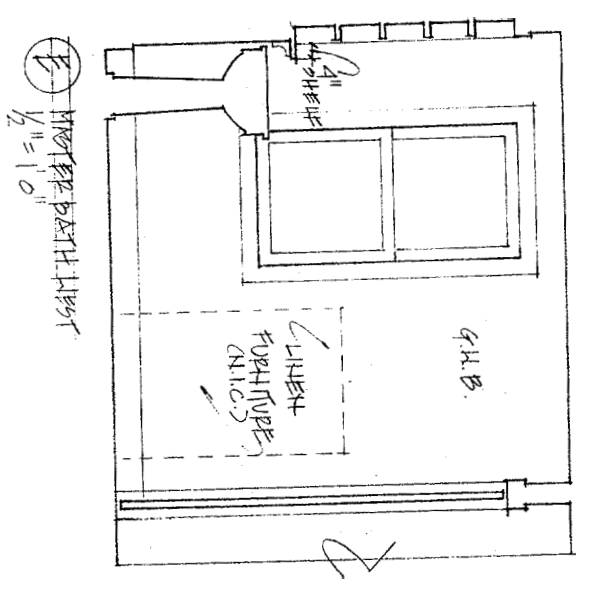
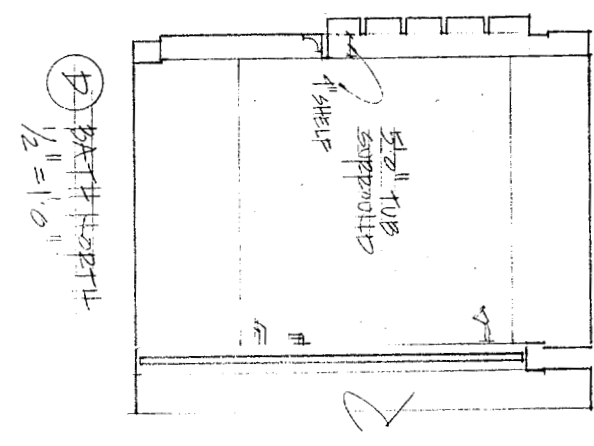
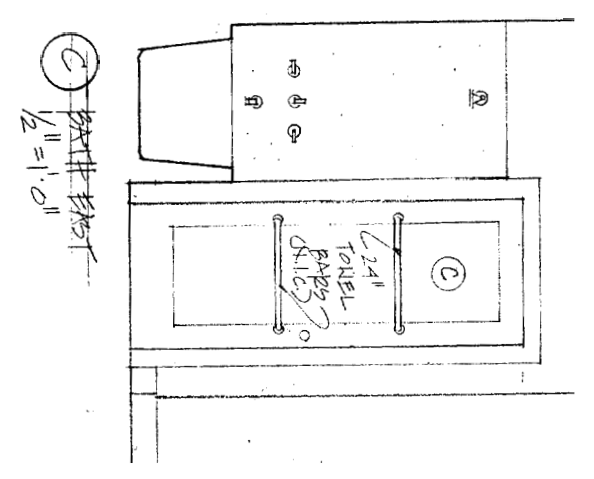
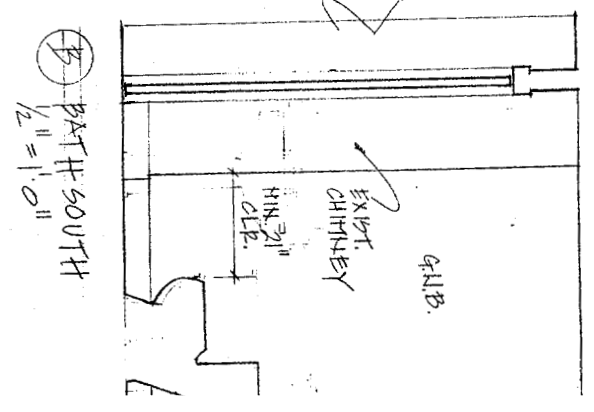
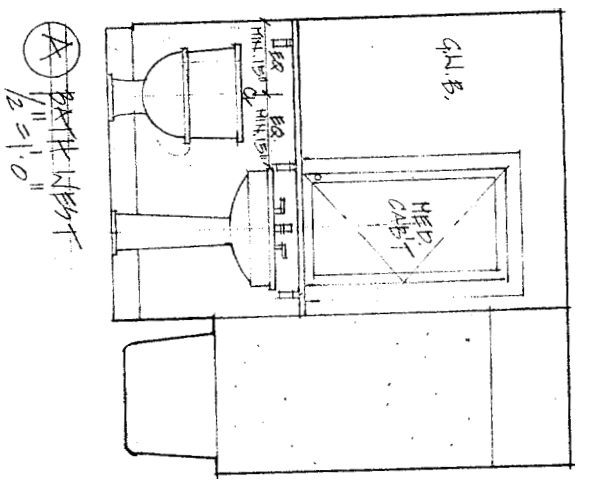
B DINING / SITTING AREA NORTH
1/2" = 1'-0"

EXIST. STAIRS UP

PROJECT		Maguire Residence	
DATE	5.23.05	REVISED	8.26.05 6.13.05
SCALE	1/2" = 1'-0"	DRAWN BY	Rachel
NOTES			

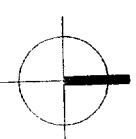


PROJECT	
Maguire Residence	
DATE	5.23.05
DATE	5.26.05
SCALE	6.1.05
DRAWN BY	Rachel
NOTES	

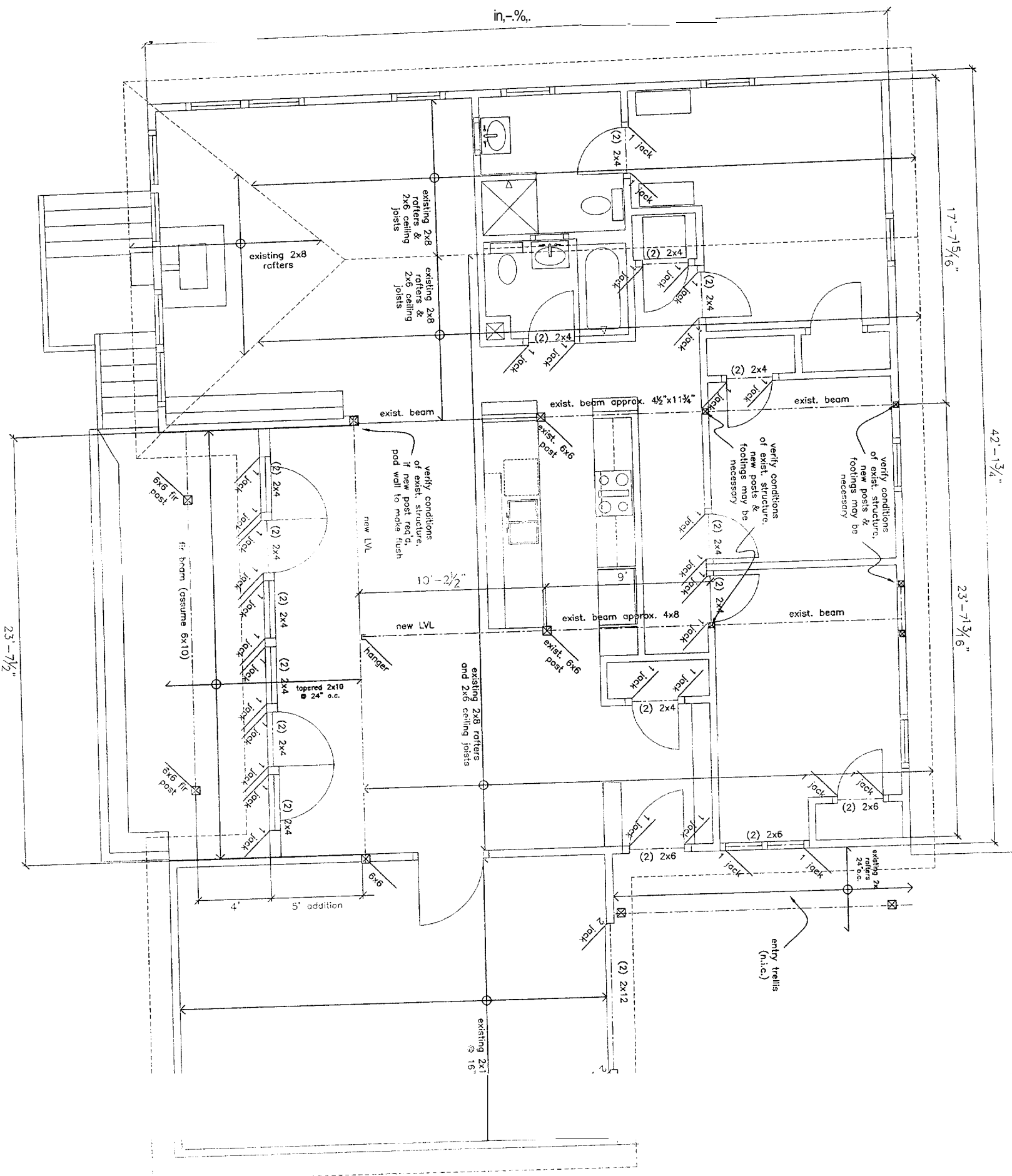


PROJECT	Maguire Residence
DATE	5.23.05
REVISIONS	5.26.05 6.13.05
SCALE	1/2" = 1'-0"
DRAWN BY	Rachel
NOTES	

**proposed:
ceiling/roof framing
plan**

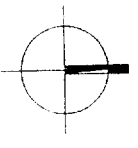
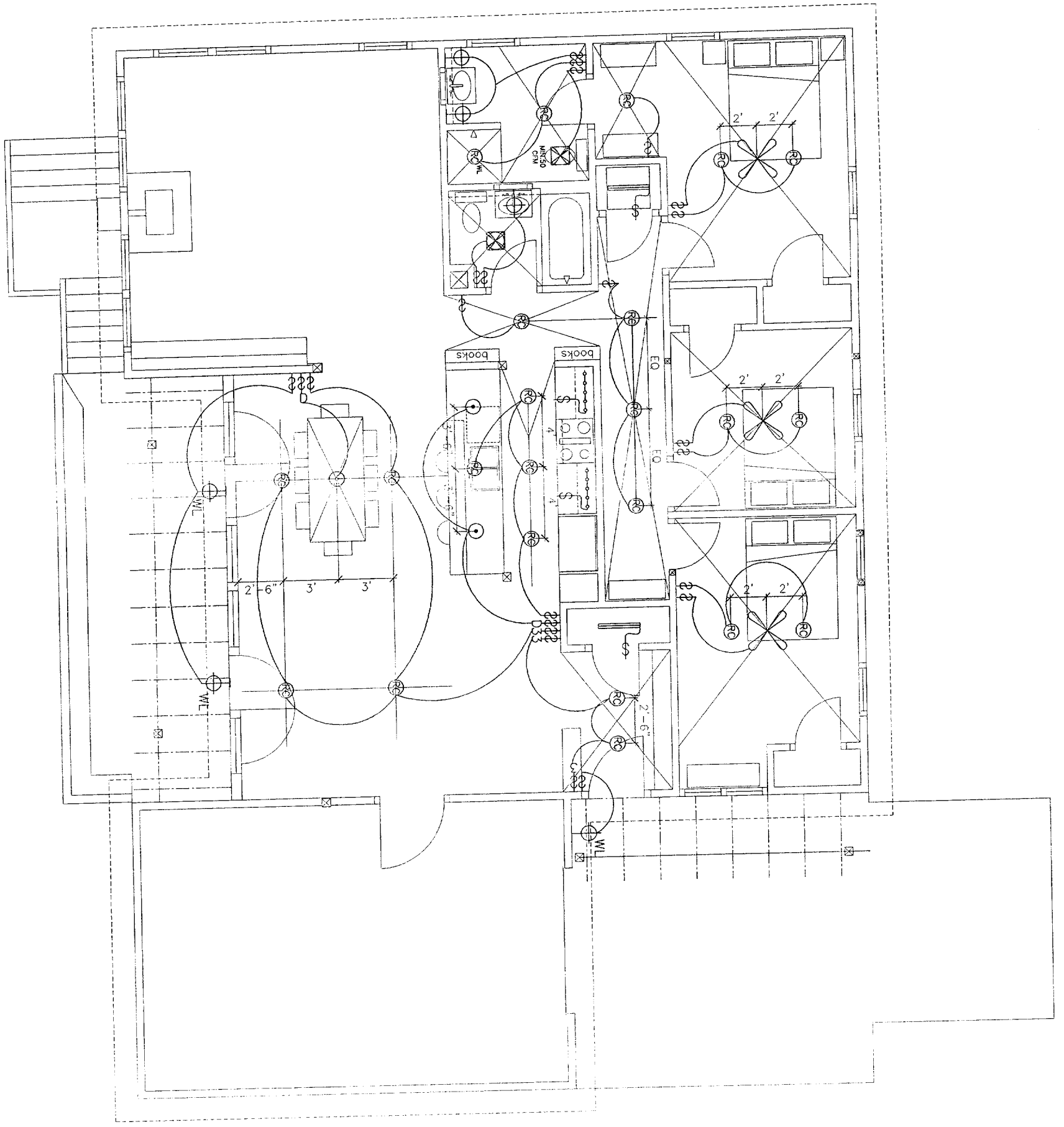


PROJECT Maguire Residence	
DATE 3.16.05	REVISED 5.26.05 6.13.05
SCALE 1/4" = 1'-0"	DRAWN BY Rachel
NOTES	



(A) Proposed Roof Framing
1/4" = 1'-0"

**proposed:
first floor
lighting plan**



PROJECT Maguire Residence

DATE	3.16.05	REVISED	5.26.05	6.13.05
SCALE	1/4" = 1'-0"			
NOTES	DRAWN BY			

- NOTES
- ① circle underpinning
 - ② square-foot Solid Infrared lighting fixture
 - ③ 220 220 watt
 - ④ 220 220 watt
 - ⑤ 220 220 watt
 - ⑥ 220 220 watt
 - ⑦ 220 220 watt
 - ⑧ 220 220 watt
 - ⑨ 220 220 watt
 - ⑩ 220 220 watt
 - ⑪ 220 220 watt
 - ⑫ 220 220 watt
 - ⑬ 220 220 watt
 - ⑭ 220 220 watt
 - ⑮ 220 220 watt
 - ⑯ 220 220 watt
 - ⑰ 220 220 watt
 - ⑱ 220 220 watt
 - ⑲ 220 220 watt
 - ⑳ 220 220 watt
 - ㉑ 220 220 watt
 - ㉒ 220 220 watt
 - ㉓ 220 220 watt
 - ㉔ 220 220 watt
 - ㉕ 220 220 watt
 - ㉖ 220 220 watt
 - ㉗ 220 220 watt
 - ㉘ 220 220 watt
 - ㉙ 220 220 watt
 - ㉚ 220 220 watt
 - ㉛ 220 220 watt
 - ㉜ 220 220 watt
 - ㉝ 220 220 watt
 - ㉞ 220 220 watt
 - ㉟ 220 220 watt
 - ㊱ 220 220 watt
 - ㊲ 220 220 watt
 - ㊳ 220 220 watt
 - ㊴ 220 220 watt
 - ㊵ 220 220 watt
 - ㊶ 220 220 watt
 - ㊷ 220 220 watt
 - ㊸ 220 220 watt
 - ㊹ 220 220 watt
 - ㊺ 220 220 watt
 - ㊻ 220 220 watt
 - ㊼ 220 220 watt
 - ㊽ 220 220 watt
 - ㊾ 220 220 watt
 - ㊿ 220 220 watt

A Proposed First Floor Lighting Plan
1/4" = 1'-0"

