

**Rachel Conly**  
Architectural Design

26 Sterling Street  
Peaks Island, Maine 04108  
207.766.5625

**Proposed  
Roof Framing  
Plan**

**Mills Residence**

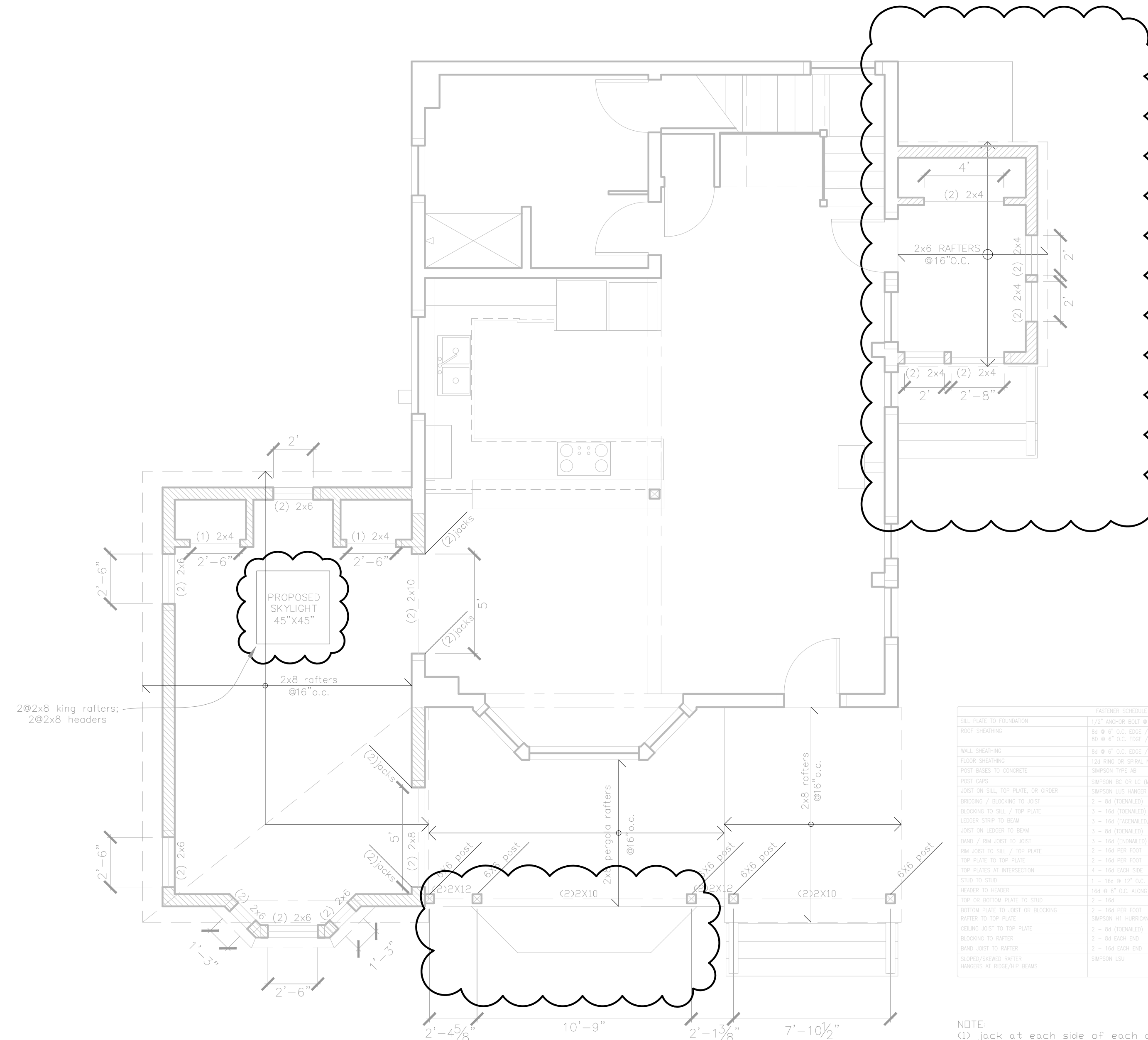
**9 Sandpiper Rd.  
Peaks Island, ME**

DATE 03.18.14 REVISED 09.15.15

SCALE 1/4"=1'-0" DRAWN BY Rachel & Harvey

NOTES

**S2**



FASTENER SCHEDULE	
SILL PLATE TO FOUNDATION	1/2" ANCHOR BOLT @ 36" O.C. W/ 3" PLATE WASHER, 9" MIN. EMBEDMENT
ROOF SHEATHING	8d @ 6" O.C. EDGE / 12" O.C. FIELD (TYPICAL PANELS) 8d @ 6" O.C. EDGE / 6" O.C. FIELD (PERIMETER PANELS)
WALL SHEATHING	8d @ 6" O.C. EDGE / 12" O.C. FIELD
FLOOR SHEATHING	12d RING OR SPIRAL NAILS @ 6" O.C. EDGE / 12" O.C. FIELD
ROOF BRACES TO CONCRETE	SIMPSON TYPIC AB
POST CAPS	SIMPSON DC OR LC (MATCH POST SIZE)
JOIST ON SILL, TOP PLATE, OR GIRDER	SIMPSON LUS HANGER OR 4 - 8d (TOENAIL) WHEN JOIST BEARS ON SUPPORT
BROOKING / BLOCKING TO JOIST	2 - 8d (TOENAIL)
BLOCKING TO SILL / TOP PLATE	3 - 16d (TOENAIL)
LEDGER STRIP TO BEAM	3 - 16d (TOENAIL, PER JOIST)
JOIST ON LEDGER TO BEAM	3 - 8d (TOENAIL)
BAND / RIM JOIST TO JOIST	3 - 16d (TOENAIL)
RIM JOIST TO SILL / TOP PLATE	2 - 16d PER FOOT
TOP PLATE TO TOP PLATE	2 - 16d PER FOOT
TOP PLATES AT INTERSECTION	4 - 16d EACH SIDE
STUD TO STUD	1 - 16d @ 12" O.C.
HEADER TO HEADER	16d @ 8" O.C. ALONG EDGES
TOP OR BOTTOM PLATE TO STUD	2 - 16d
BOTTOM PLATE TO JOIST OR BLOCKING	2 - 16d PER FOOT
RAFTER TO TOP PLATE	SIMPSON H1 HURRICANE TIE
CEILING JOIST TO TOP PLATE	2 - 8d (TOENAIL)
BLOCKING TO RAFTER	2 - 8d EACH END
BAND JOIST TO RAFTER	2 - 16d EACH END
SLOPED/SKEWED RAFTER HANGERS AT RIDGE/HP BEAMS	SIMPSON LSH

NOTE:  
(1) jack at each side of each door/window header, unless otherwise noted

