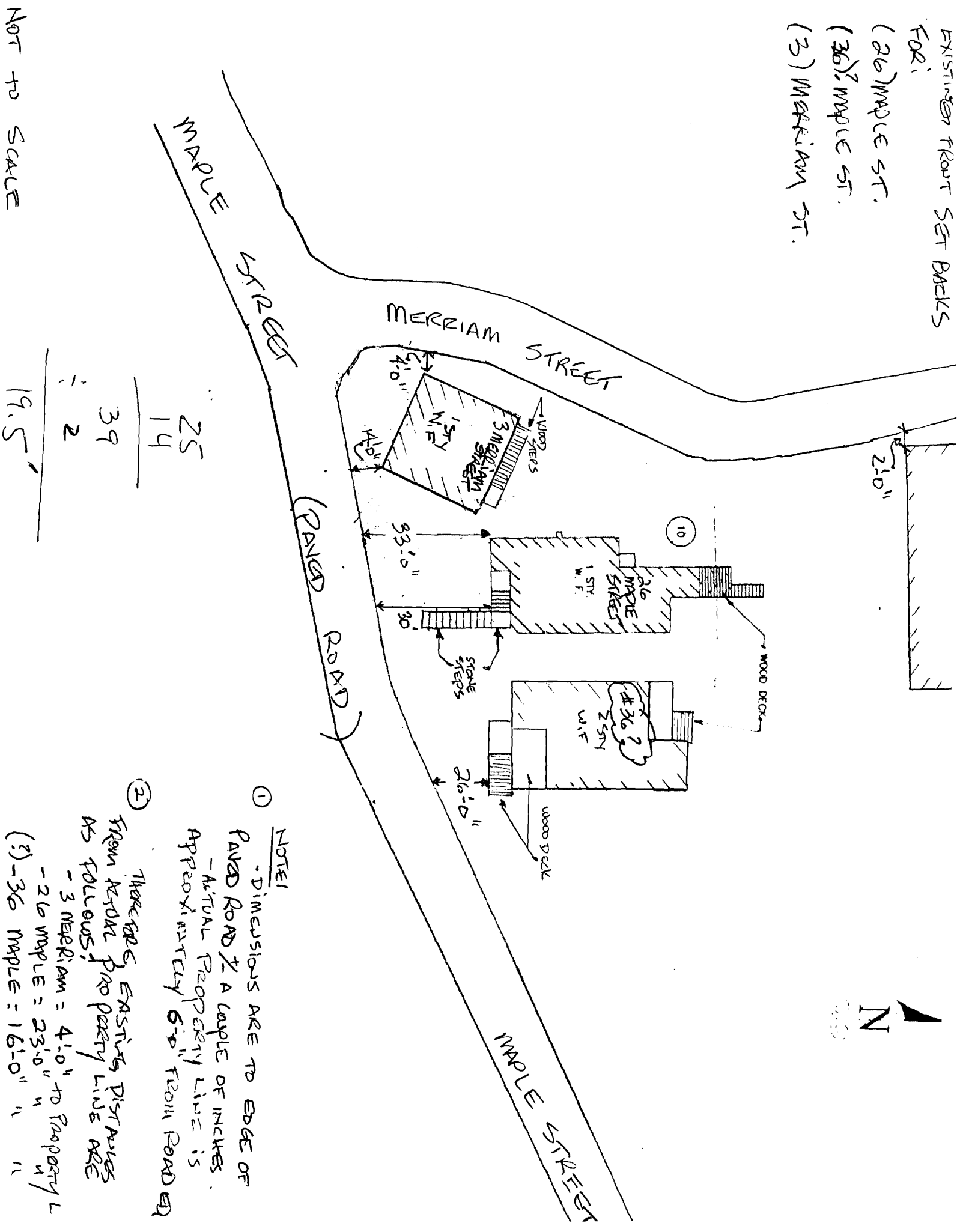


Jack D. Birolano
20 MAPLE ST.

EXISTING FRONT SET BACKS
FOR:
(26) MAPLE ST.
(36)? MAPLE ST.
(3) MERRIAM ST.



NOT TO SCALE

①

NOTE!

- DIMENSIONS ARE TO EDGE OF
PAVED ROAD TO A COUPLE OF INCHES.
- ACTUAL PROPERTY LINE IS
APPROXIMATELY 6" FROM PAVED RD

②

THESE ARE EXISTING DISTANCES
FROM ACTUAL PROPERTY LINE ARE
AS FOLLOWS:
- 3 MERRIAM = 4'-0" TO PROPERTY L
- 26 MAPLE = 23'-0" " " " " " "
(?) - 36 MAPLE = 16'-0" " " " " "

③

BASED ON THE NOTES #1 & #2

THE ALLOWABLE FRONT SETBACK
FOR 26 MAPLE IS THE AVERAGE
OF THE (2) ADJACENT LOTS OR
10'-0" $\left[\frac{4'-0" + 16'-0"}{2} = 20'-0" / 2 = 10'-0" \right]$