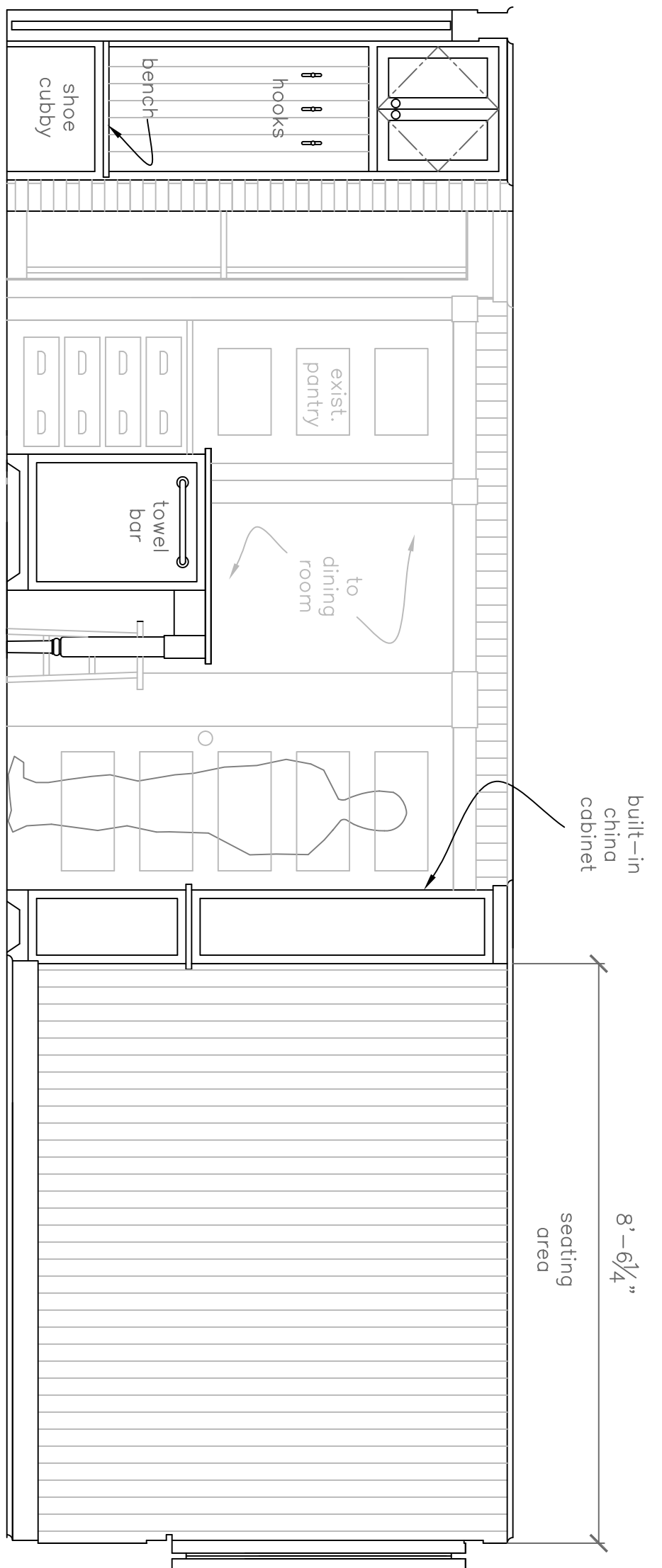


Rachel Conly

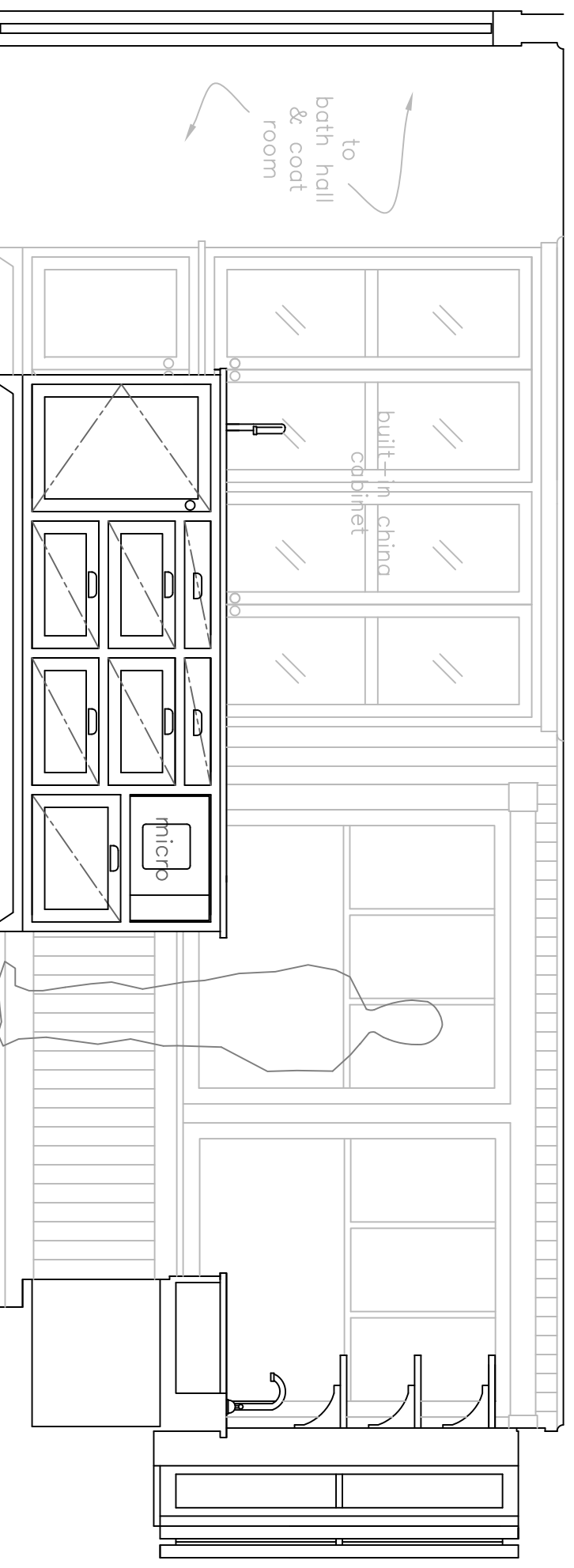
Architectural Design

207.766.5625

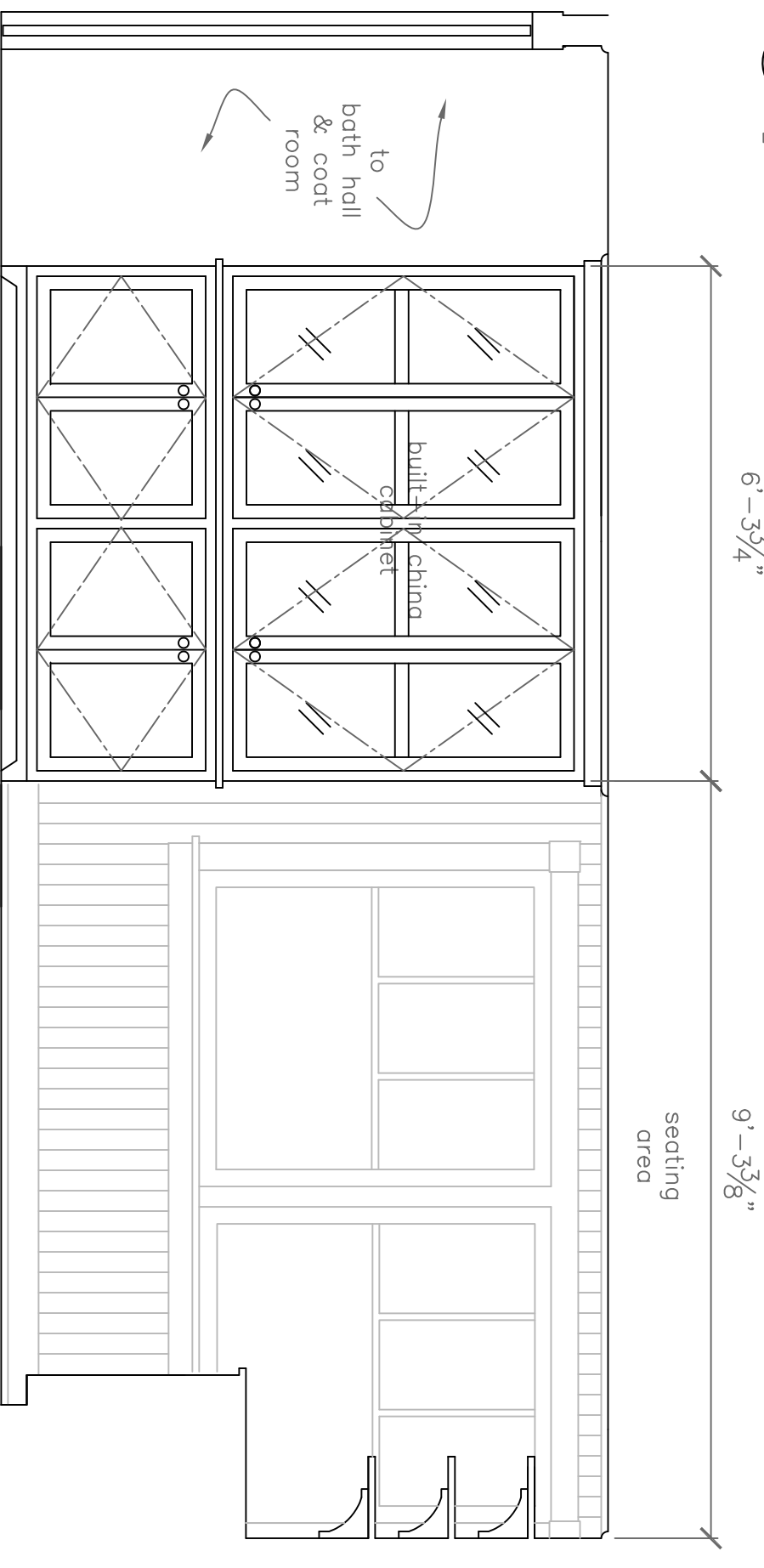
Proposed Interior Elevations



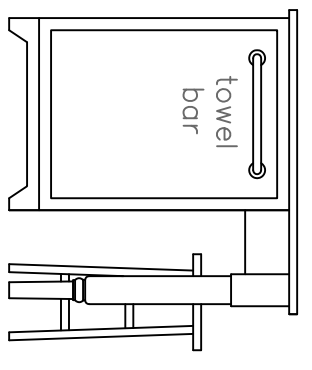
A Kitchen East: Showing Island
 $\frac{1}{2}'' = 1'-0''$



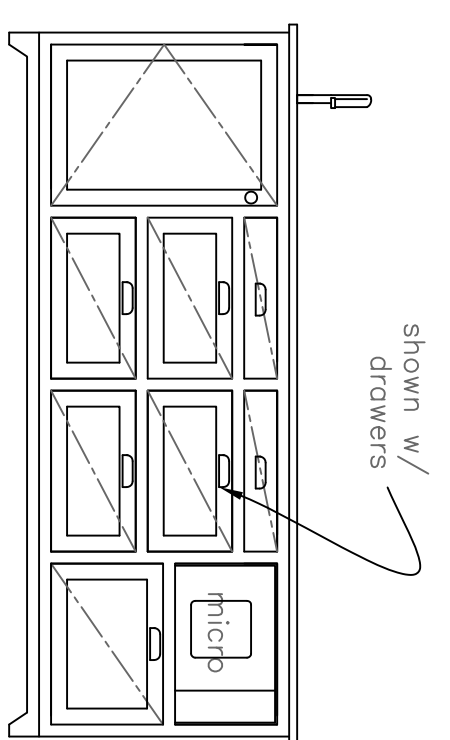
B Kitchen South: Showing Island
 $\frac{1}{2}'' = 1'-0''$



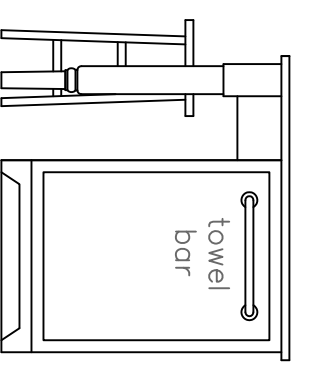
C Kitchen South
 $\frac{1}{2}'' = 1'-0''$



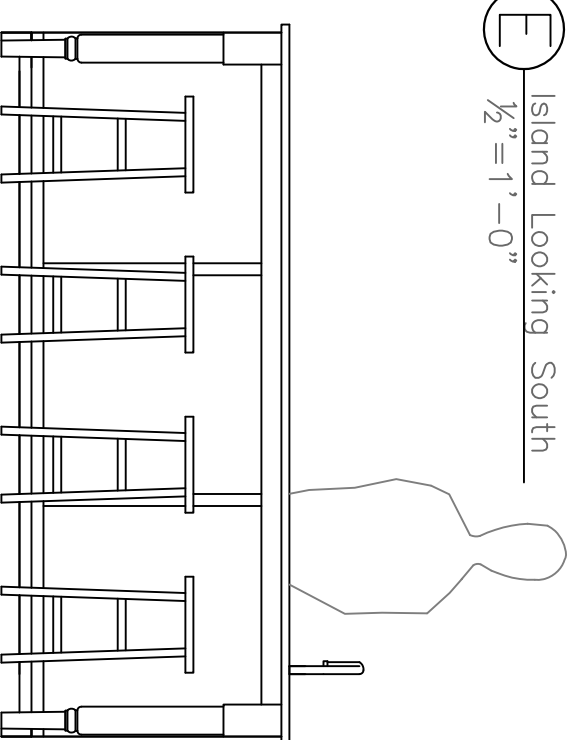
D Island Looking East
 $\frac{1}{2}'' = 1'-0''$



E Island Looking South
 $\frac{1}{2}'' = 1'-0''$



F Island Looking West
 $\frac{1}{2}'' = 1'-0''$



G Island Looking North
 $\frac{1}{2}'' = 1'-0''$

PROJECT
Freres Steed
Residence

3 Torrington Point
Peaks Island, Maine
04108

DATE	REVISED	10.17.12
SCALE	DRAWN BY	1.13.13
$\frac{1}{2}'' = 1'-0''$	Rachel	

NOTES

A6