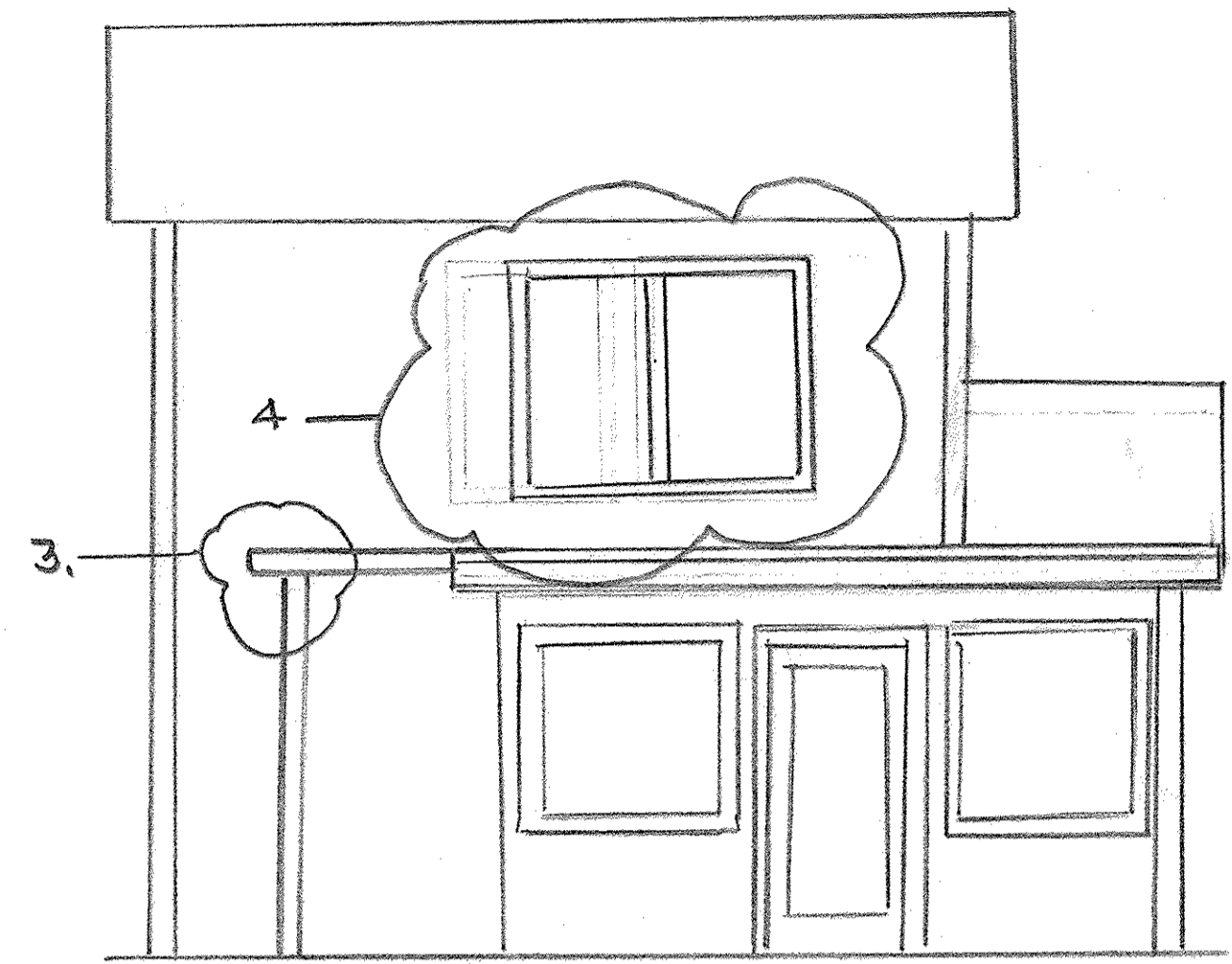


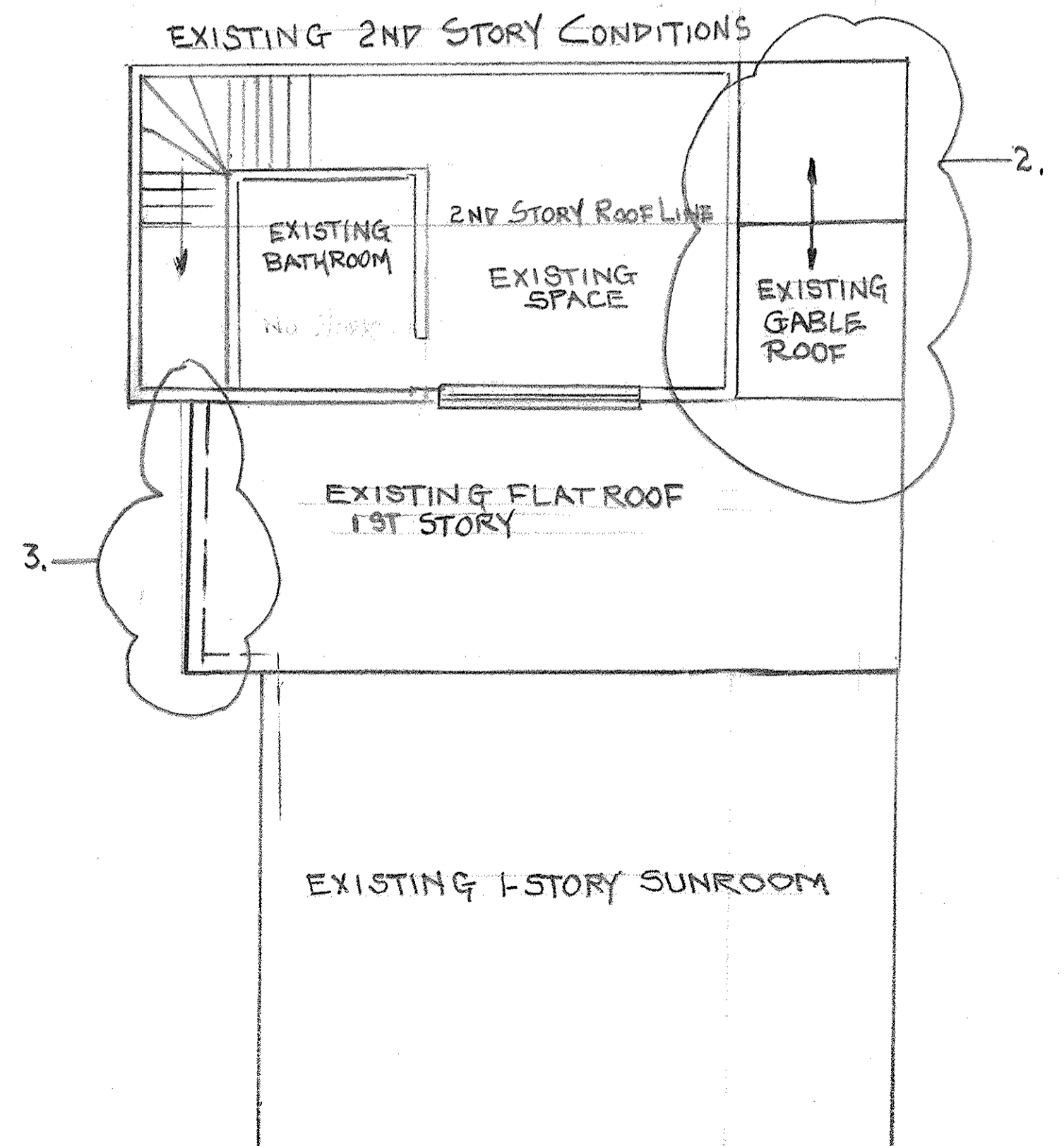
WEST ELEVATION (EXISTING)



NORTH ELEVATION

DEMOLITION NOTES

1. REMOVE WALL FRAMING @ 2ND STORY EAST WALL.
2. REMOVE GABLE END AND FIRST FLOOR GABLE ROOF.
3. REMOVE FLAT ROOF SOFFIT.
4. REMOVE AND ABANDON WINDOWS.



CARVER ADDITION	
DEMOLITION PLAN @ EXISTING CONDITIONS	
A:3	SCALE - 1/4" = 1'-0"
	DATE: 8-9-14
	DRAWN BY: WC