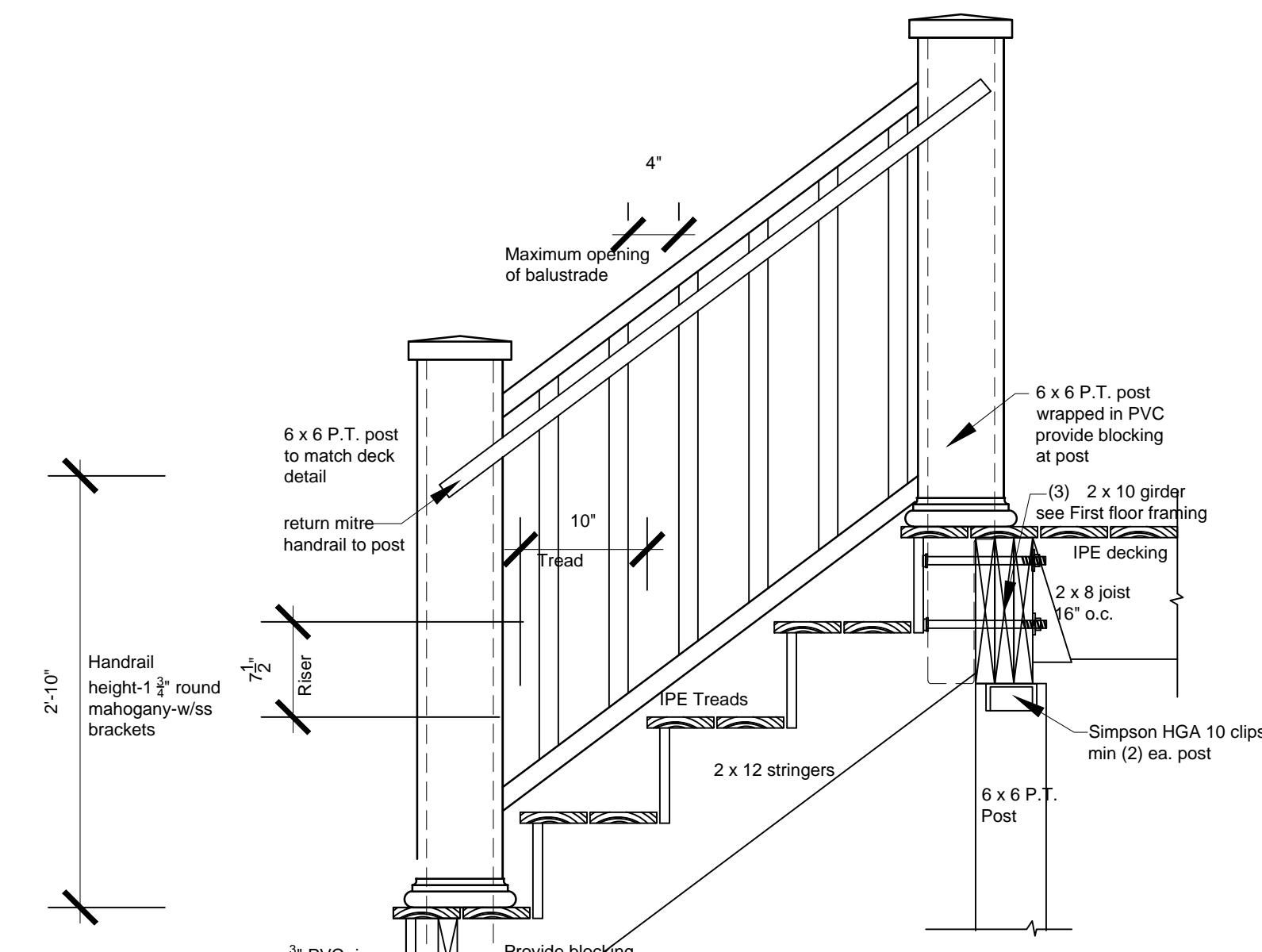
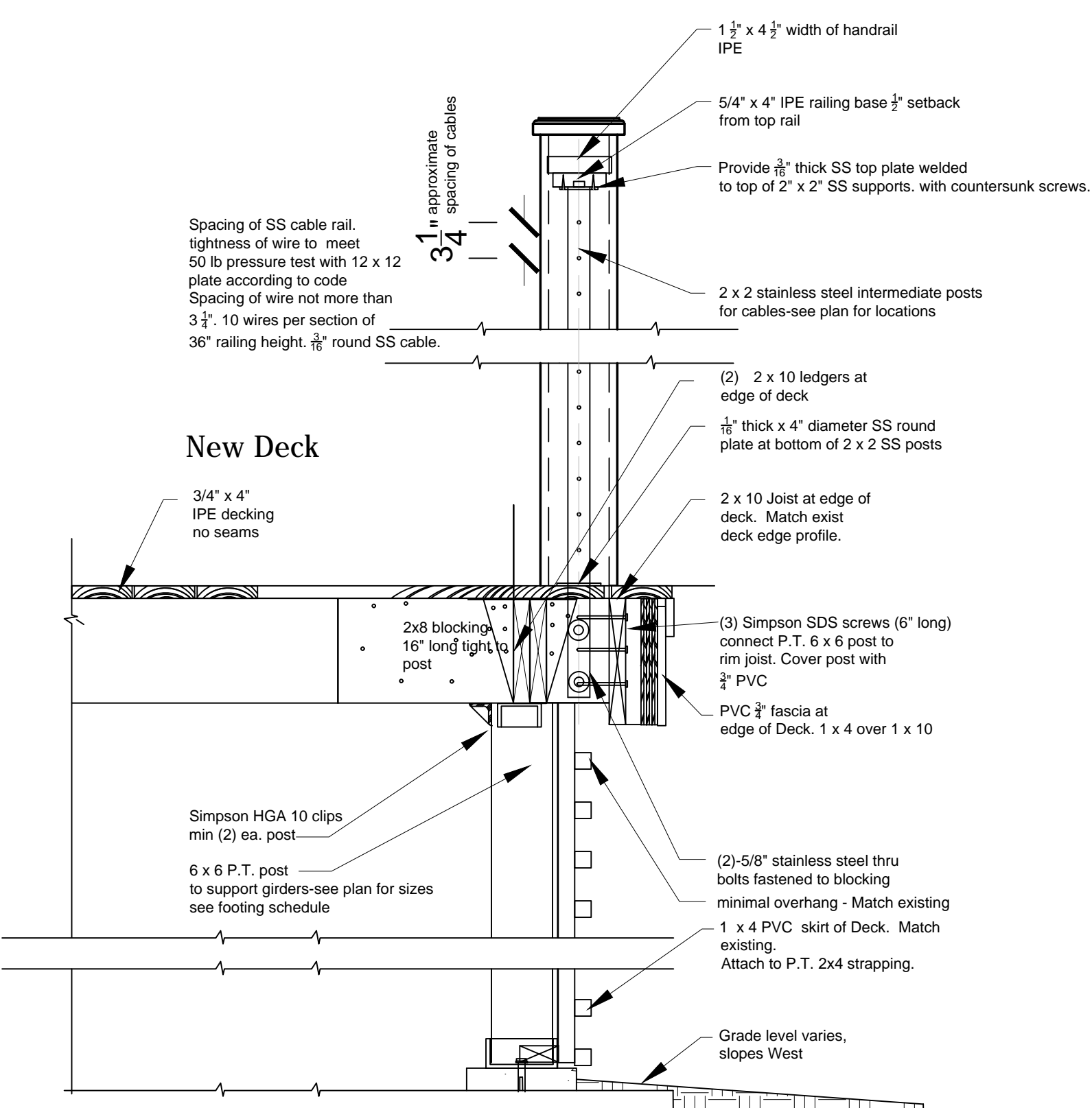


professional seal

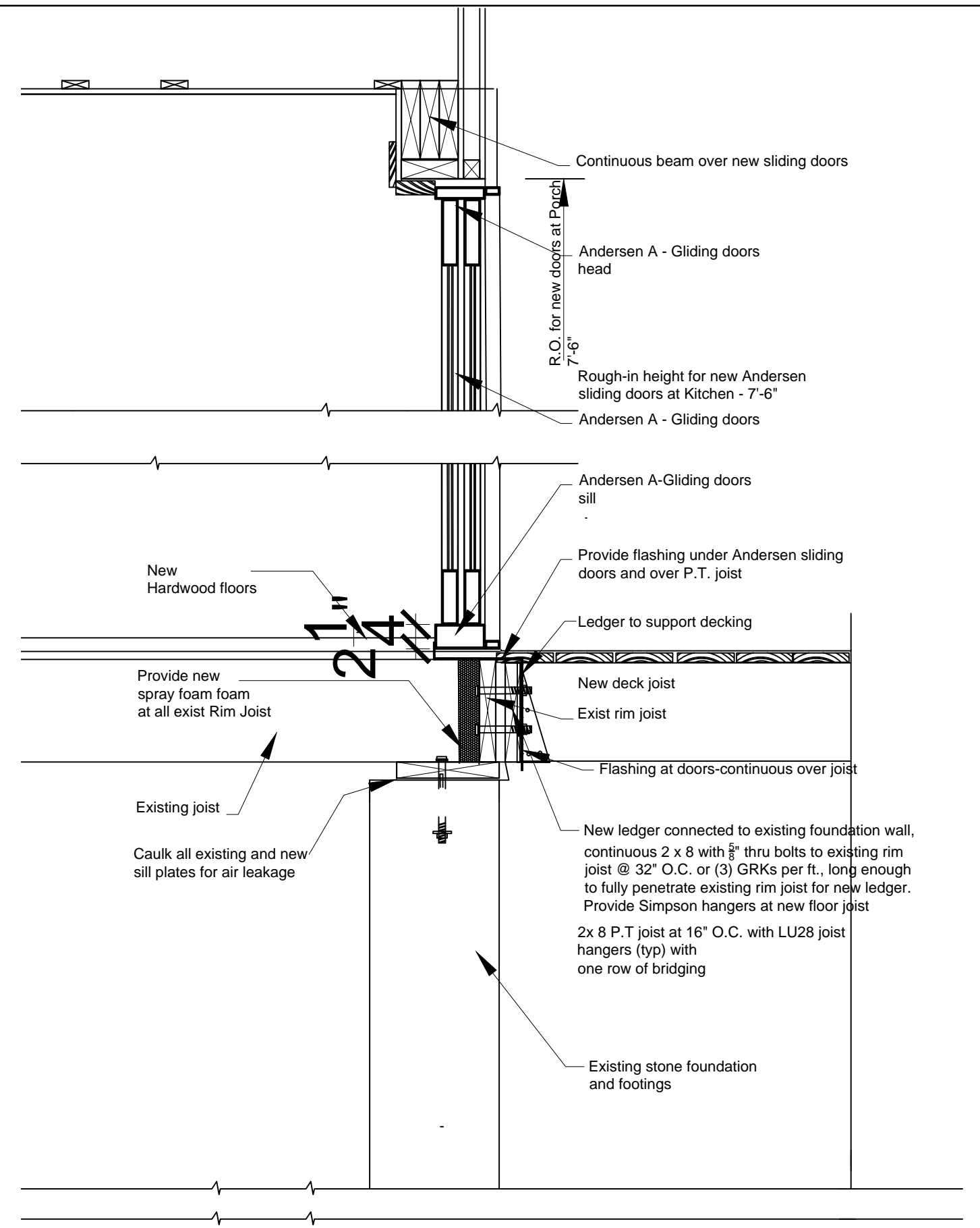
consultants



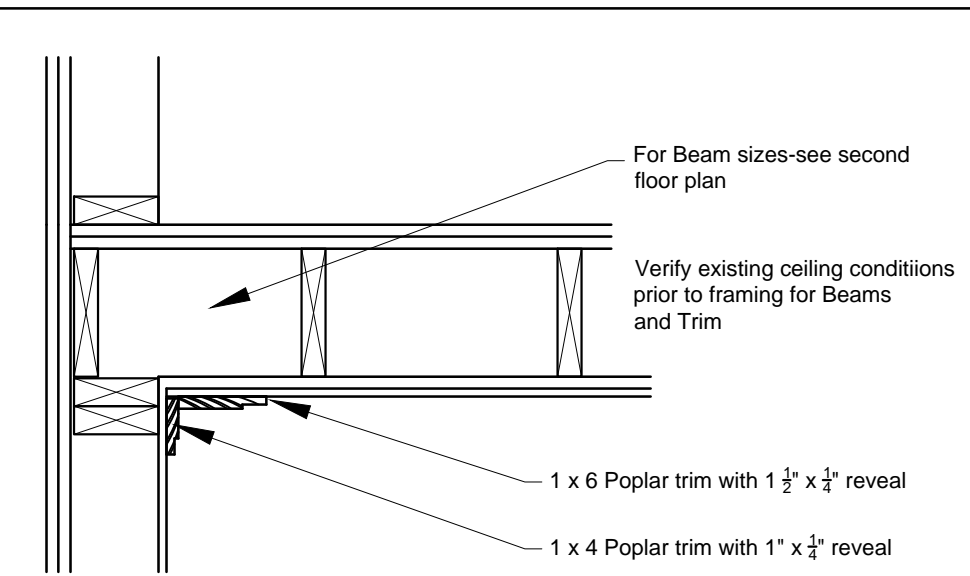
Section-C @ Deck Stair
scale: 1" = 1'-0"



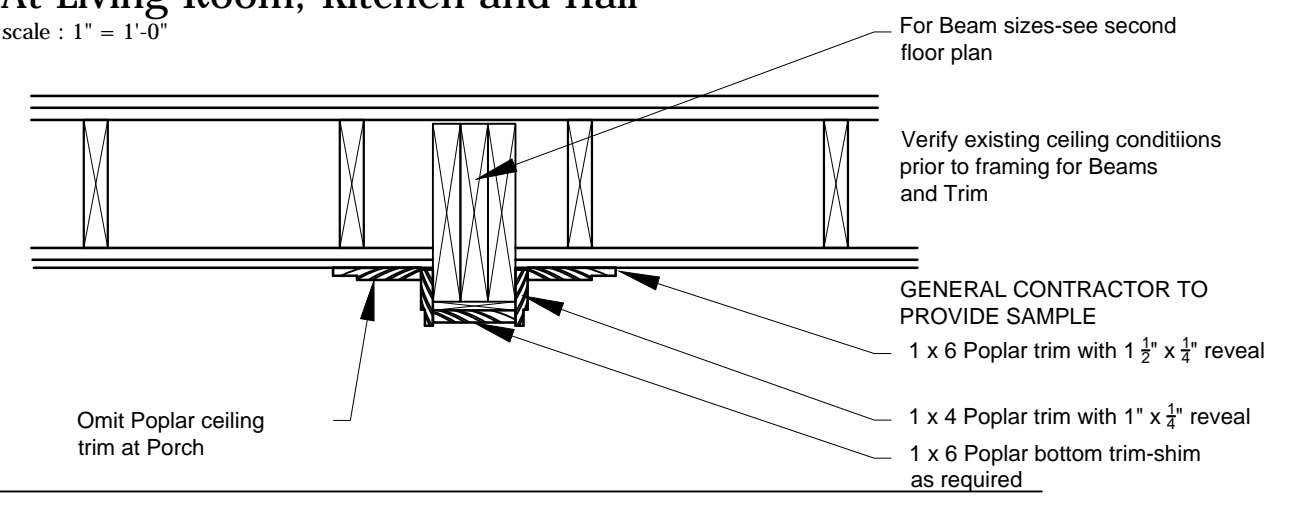
Section-B @ 2 x 2 SS post
scale: 1" = 1'-0"



Section-A First Floor Deck-off Kitchen/Dining Area
scale: 1" = 1'-0"

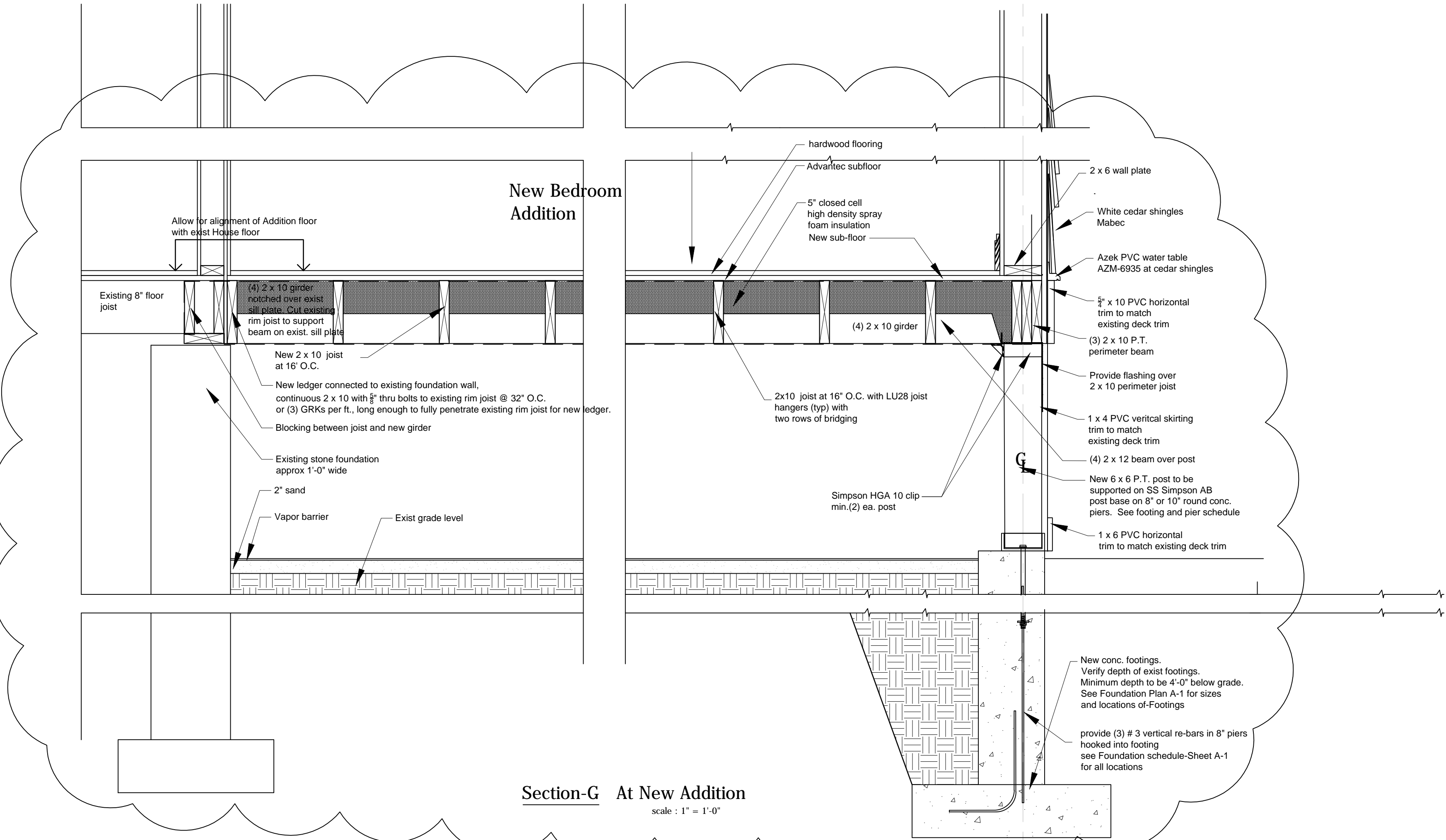


Section-F Typical Ceiling Wall Crown Section
At Living Room, Kitchen and Hall
scale: 1" = 1'-0"



Section-E Typical Ceiling Beam Sections
At Living Room and Hall
scale: 1" = 1'-0"

Section-D Ceiling Beam Details-Sections
At new Addition Bedroom and Loft
scale: 1" = 1'-0"



Section-G At New Addition
scale: 1" = 1'-0"

ISSUE	DATE
PERMITS	7-21-2017
PERMIT REVISION	8-25-2017

SCALE: 1" = 1'-0"
Detail Sections at Deck,
Addition and Ceilings