

BELDEN COTTAGE
 Owners
 Anne B. Belden and John R. Belden
 Trustees of the Anne B. Belden Living Trust

13 OAK AVENUE
 PEAKS ISLAND, MAINE 04108

JAMES W. GREENWELL, AIA, PLLC
 ARCHITECT

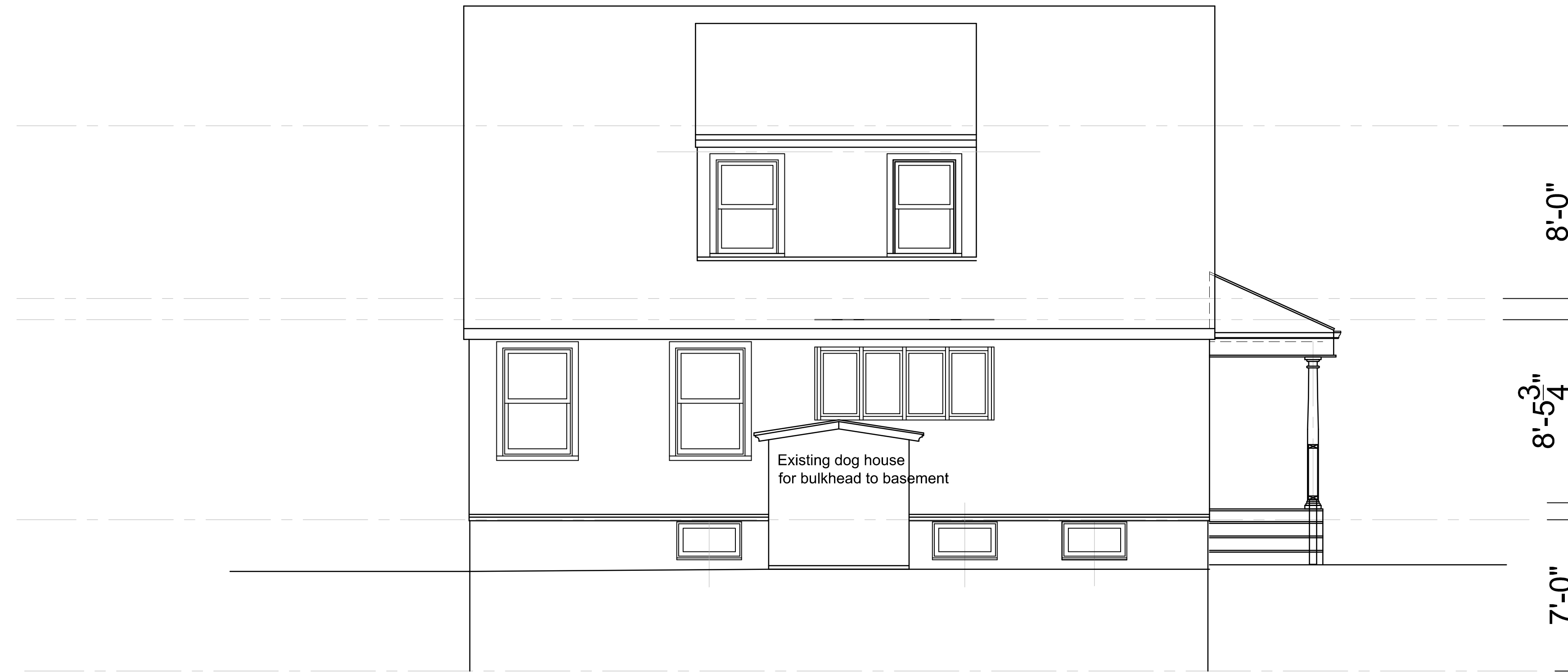
130 ISLAND AVENUE
 PEAKS ISLAND, ME 04108

VOICE 207-766-2509
 CELL 202-607-8976



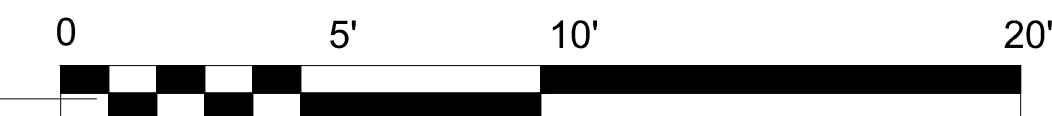
professional seal

consultants



3 Exist Elevation - East

scale : 1/4" = 1'-0"

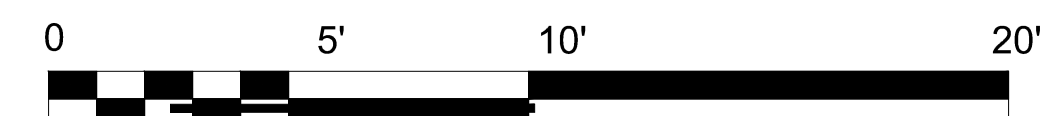


1 Elevation / Deck Section - West

scale : 1/4" = 1'-0"

2 Elevation at New Deck - West

scale : 1/4" = 1'-0"



SCALE: 1/4" = 1'-0"
 east and west
 elevations

A .6