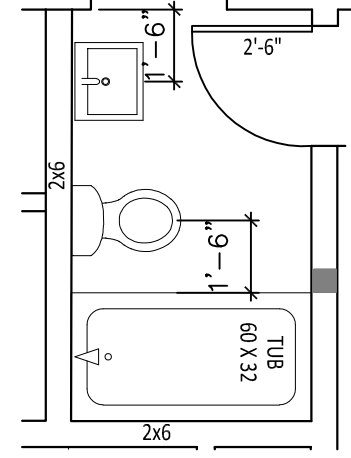
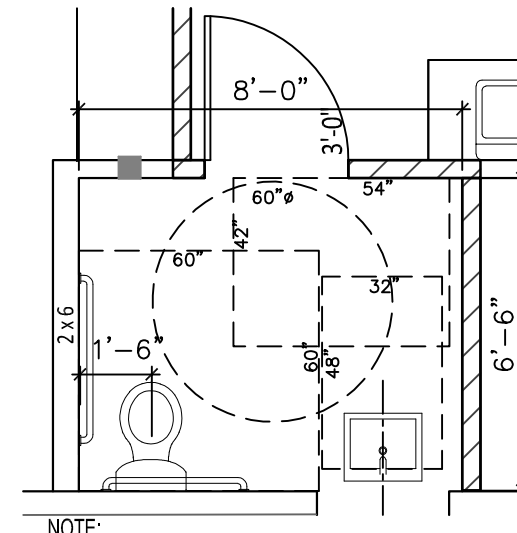


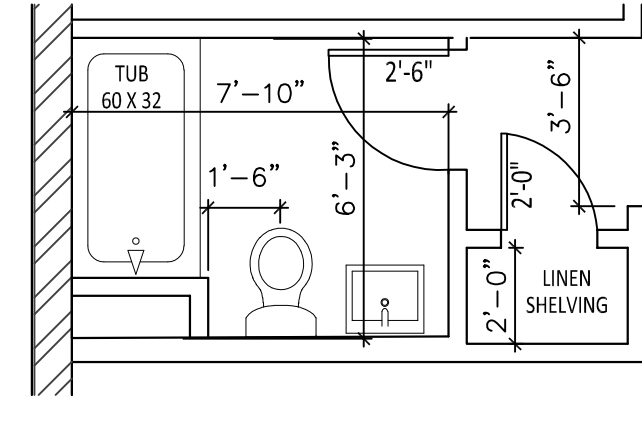
4 ENLARGED APT#4 BATH PLAN
1/4"=1'-0"



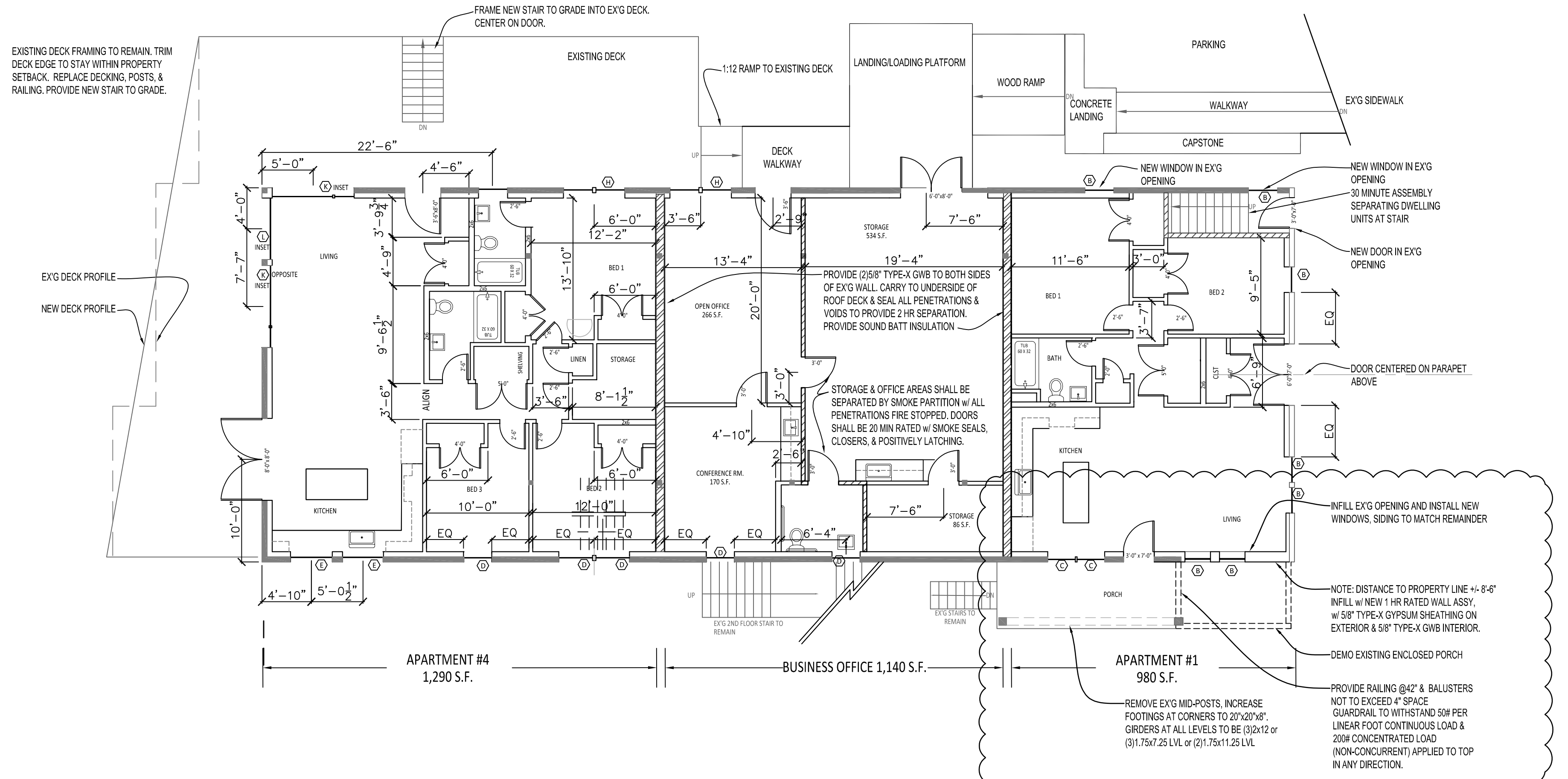
4 ENLARGED APT#4 MASTER BATH PLAN
1/4"=1'-0"



3 ENLARGED OFFICE ADA TLT RM PLAN
1/4"=1'-0"



2 ENLARGED APT#1 BATH PLAN
1/4"=1'-0"

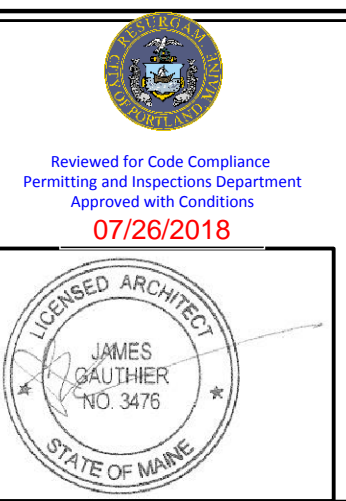


PARTITION TYPES KEY

	EXISTING TO REMAIN
	NEW PARTITION
	2 HR ASSEMBLY
	1/2 HR ASSEMBLY

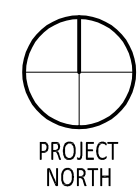
- FLOOR PLAN NOTES**
- DIMENSIONS TO FINISH FACE OF WALL & CENTERLINE OF DOORS & WINDOWS.
 - CLOSETS 2'-0" CLEAR INSIDE, TYP.
 - DOOR HINGE JAMB 4" FROM CORNER, TYP. U.O.O.

1 FIRST FLOOR PLAN
1/8"=1'-0"



Rachel Conly Design LLC
26 Sterling Street
Peaks Island, Maine 04108
207.766.5625
www.rachelconlydesign.com

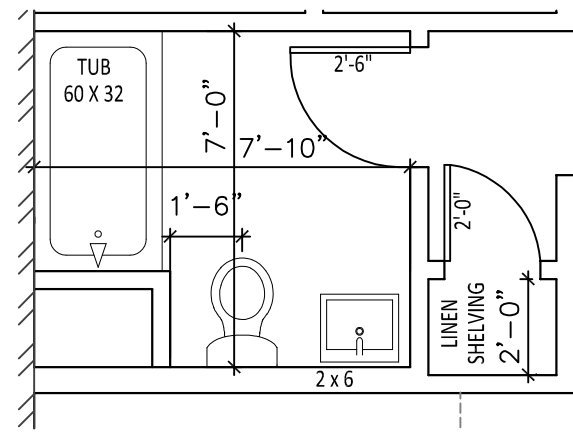
DATE	ISSUED FOR PERMIT	NOTES
2017.12.29		
2018.06.18		
		6 PERMIT AMENDMENT, REMOVE ENCLOSED PORCH



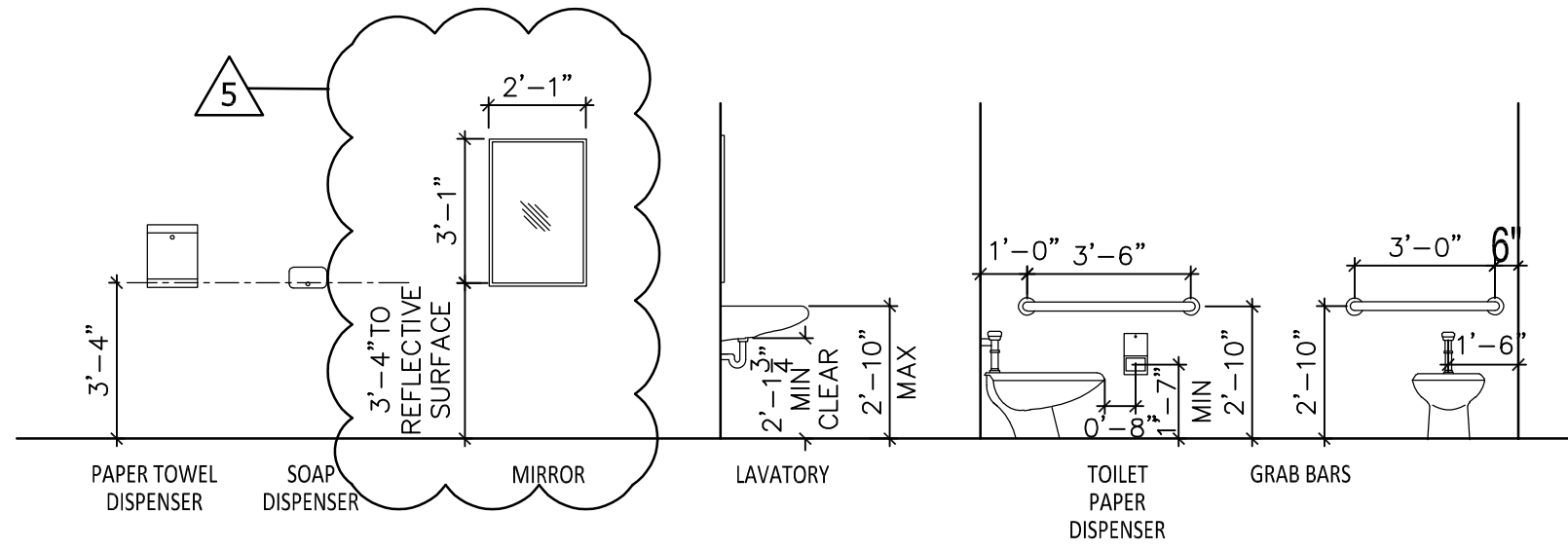
2 Island Ave.
Peaks Island, ME

FIRST FLOOR PLAN

A1.1



4 ENLARGED APT#2 BATH PLAN
1/4"=1'-0"



NOTE:
PROVIDE IN-WALL BLOCKING FOR ALL GRAB BARS, MIRRORS,
AND OWNER FURNISHED TOILET ACCESSORIES.

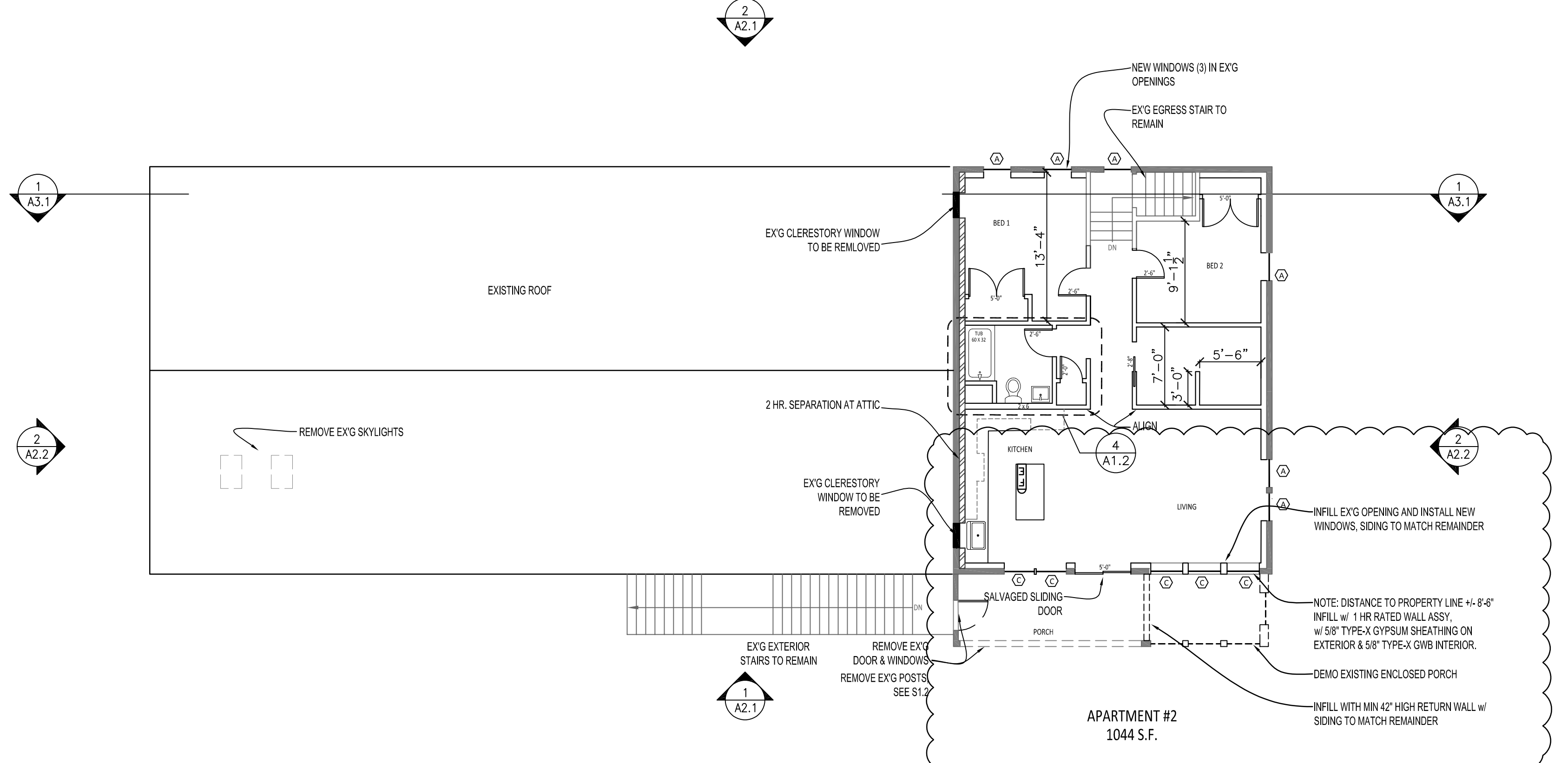
3 ADA TOILET RM MOUNTNG LOCATIONS
N.T.S.

ACCESSIBILITY NOTES

PROVIDE ADA ACCESSIBILITY TO BUSINESS OCCUPANCY INCLUDING BUT NOT LIMITED TO:

- ACCESSIBLE ROUTE FROM SIDEWALK TO ENTRY INCLUDING RAMP w/ SLOPE <1:12.
- RAMP w/ HANDRAILS & SLOPE <1:12 TO LANDING AT ENTRY DOOR.
- THRESHOLD <1/2" AT DOORS.
- 32" CLEAR OPENING BETWEEN LATCH SIDE STOP & OPEN DOOR LEAF AT DOORS.
- MANEUVERING CLEARANCES AND TURNING SPACES AT DOORS & OTHER OBSTACLES.
- ACCESSIBLE TOILET ROOM INCLUDING FIXTURES, HANDLES, REACH RANGES, & CLEARANCES.
- LEVER DOOR HANDLES.
- ONE ACCESSIBLE WORKSTATION.

2 ACCESSIBILITY NOTES

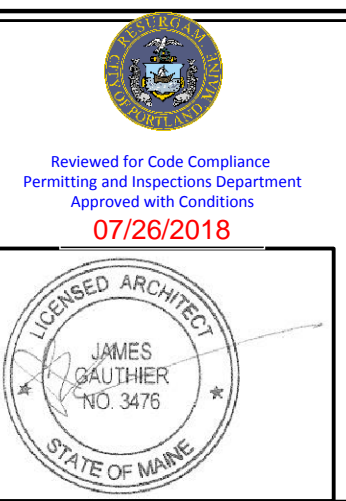


PARTITION TYPES KEY

	EXISTING TO REMAIN
	NEW PARTITION
	2 HR ASSEMBLY
	1/2 HR ASSEMBLY

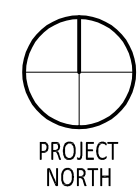
- FLOOR PLAN NOTES
- DIMENSIONS TO FINISH FACE OF WALL & CENTERLINE OF DOORS & WINDOWS.
 - CLOSETS 2'-0" CLEAR INSIDE, TYP.
 - DOOR HINGE JAMB 4" FROM CORNER, TYP, U.N.O.

1 SECOND FLOOR PLAN
1/8"=1'-0"



Rachel Conly Design LLC
26 Sterling Street
Peaks Island, Maine 04108
207.766.5625
www.rachelconlydesign.com

DATE	ISSUED FOR PERMIT	NOTES
2017.12.29		
2018.06.18	6	PERMIT AMENDMENT, REMOVE ENCLOSED PORCH



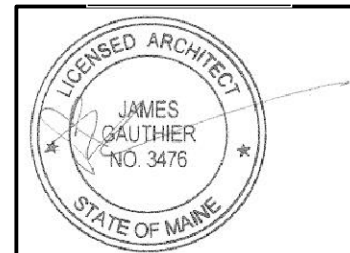
2 Island Ave.
Peaks Island, ME

SECOND FLOOR PLAN

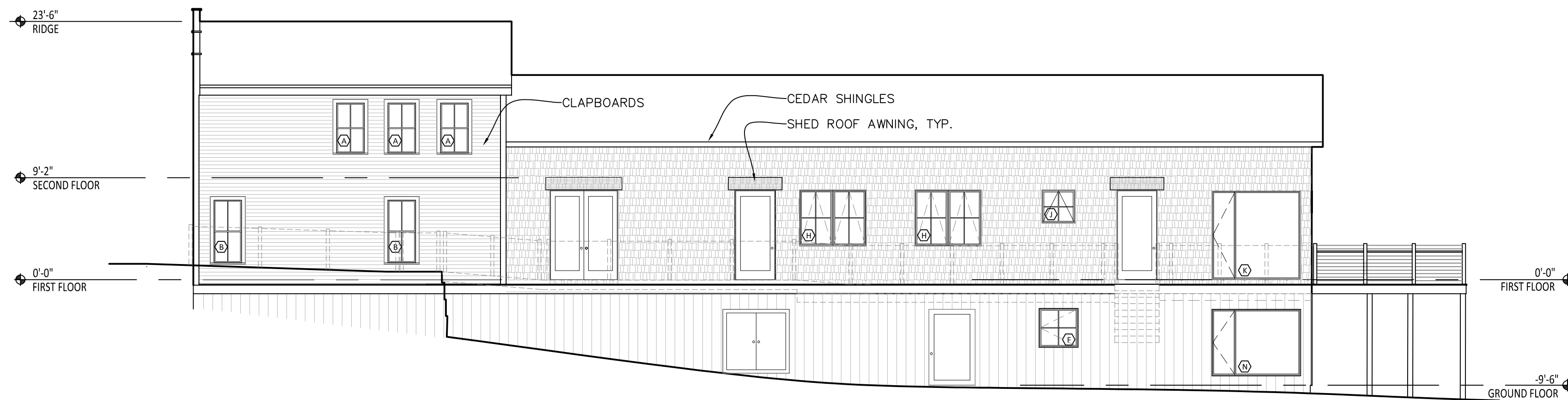
A1.2



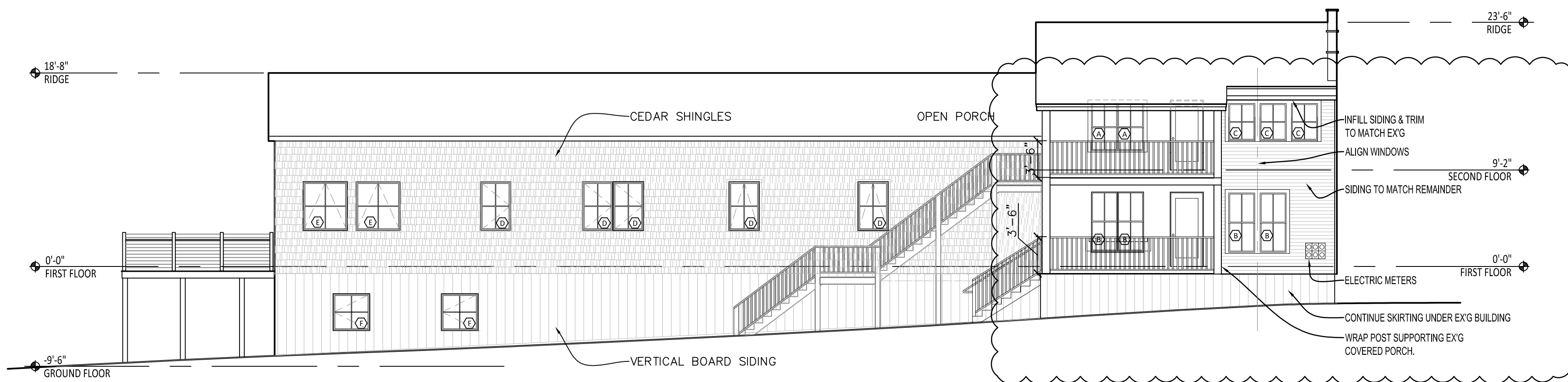
Reviewed for Code Compliance
 Permitting and Inspections Department
 Approved with Conditions
 07/26/2018



Rachel Conly Design LLC
 26 Sterling Street
 Peaks Island, Maine 04108
 207.766.5625
 www.rachelconlydesign.com



2 NORTH ELEVATION
 1/8"=1'-0"



1 SOUTH ELEVATION
 1/8"=1'-0"

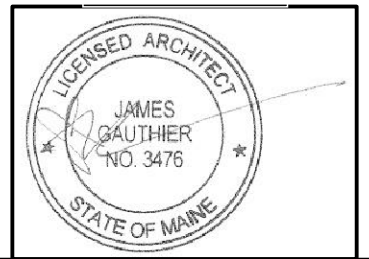
DATE	NOTES
2017.12.29	ISSUED FOR PERMIT
2018.06.18	6 PERMIT AMENDMENT, REMOVE ENCLOSED PORCH

PROJECT

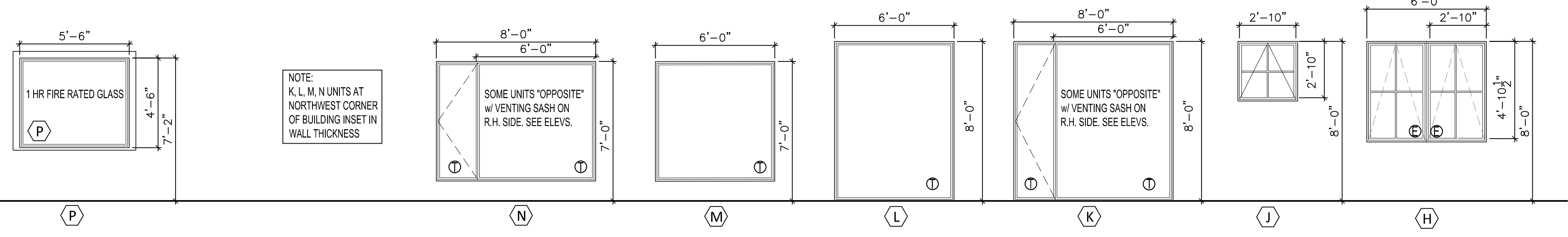
2 Island Ave.
 Peaks Island, ME

NORTH & SOUTH
 ELEVATIONS

A2.1



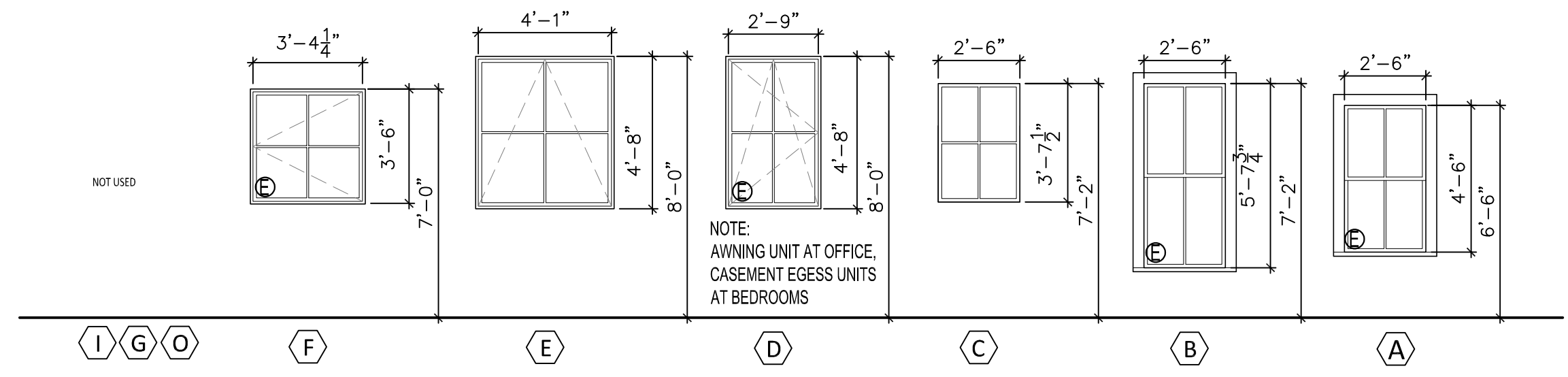
Rachel Conly Design LLC
 26 Sterling Street
 Peaks Island, Maine 04108
 207.766.5625
 www.rachelconlydesign.com



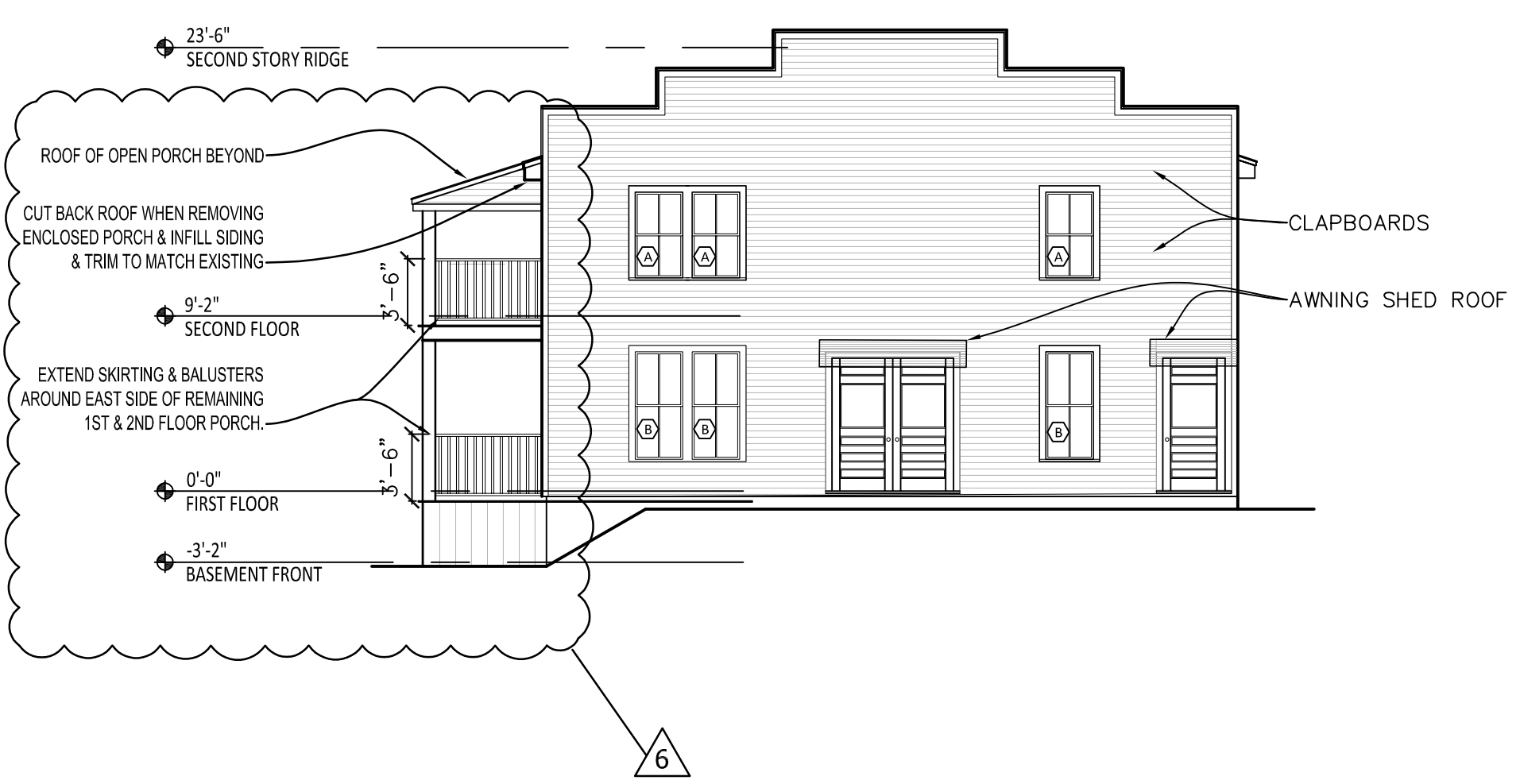
NOTE:
 K, L, M, N UNITS AT
 NORTHWEST CORNER
 OF BUILDING INSET IN
 WALL THICKNESS

- E** - EMERGENCY ESCAPE AND RESCUE OPENING WINDOW.
- MIN NET CLEAR OPENING AREA 5.7 S.F.
 - MIN NET CLEAR OPENING HEIGHT 24"
 - MIN NET CLEAR OPENING WIDTH 20"
 - MIN NET CLEAR OPENING HEIGHT A.F.F. 44"

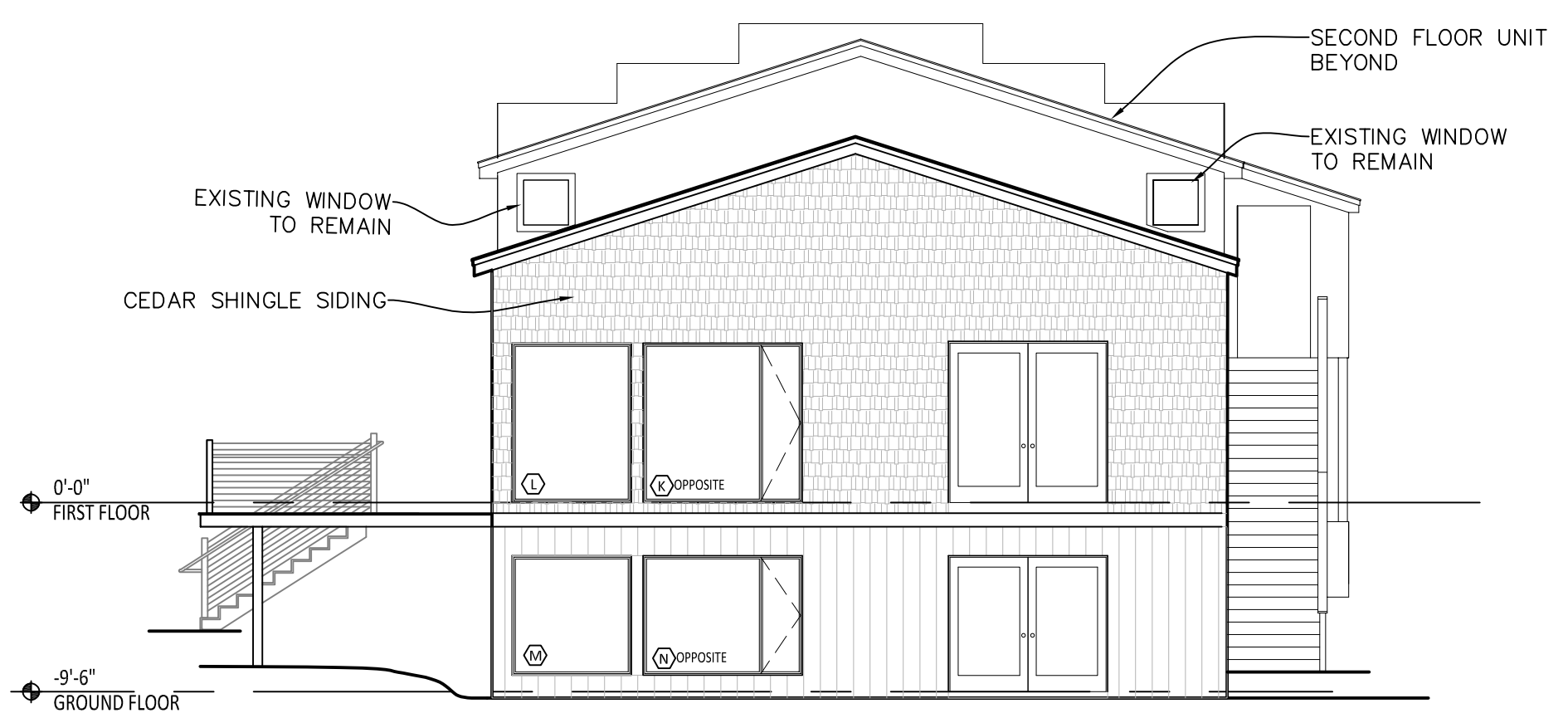
- T** - TEMPERED SAFETY GLASS REQ'D AT WINDOWS :
- GLASS AREA > 9 S.F. &
 - BOTTOM OF GLASS < 18" A.F.F. &
 - TOP OF GLASS > 36" A.F.F. &
 - WALKING SURFACE WITHIN 36".



3 WINDOW SCHEDULE
 1/4"=1'-0"



2 EAST ELEVATION
 1/8"=1'-0"



1 WEST ELEVATION
 1/8"=1'-0"

DATE	ISSUED FOR PERMIT	NOTES
2017.12.29		
2018.06.18		6 PERMIT AMENDMENT, REMOVE ENCLOSED PORCH

PROJECT
 2 Island Ave.
 Peaks Island, ME

EAST & WEST
 ELEVATIONS
A2.2