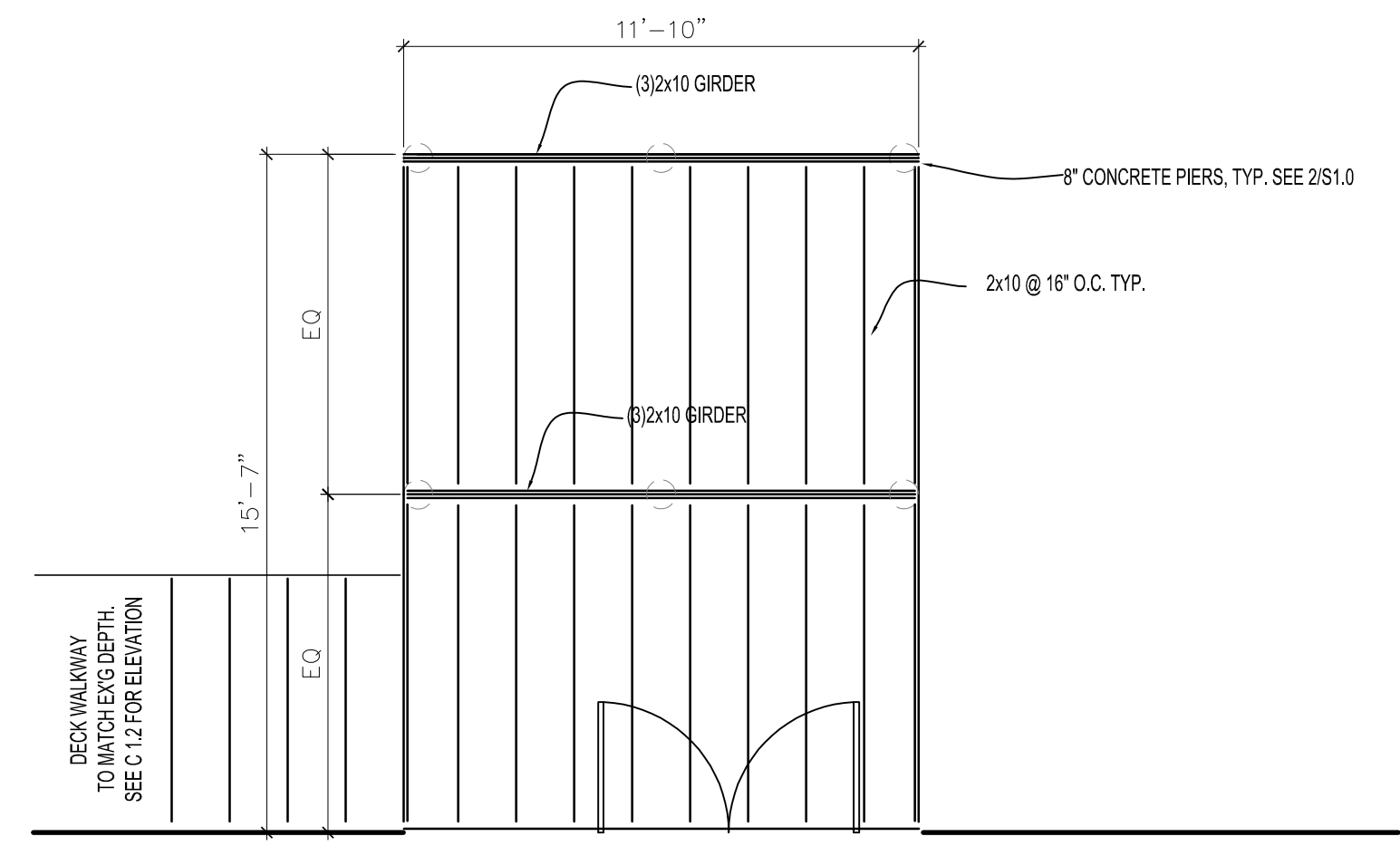
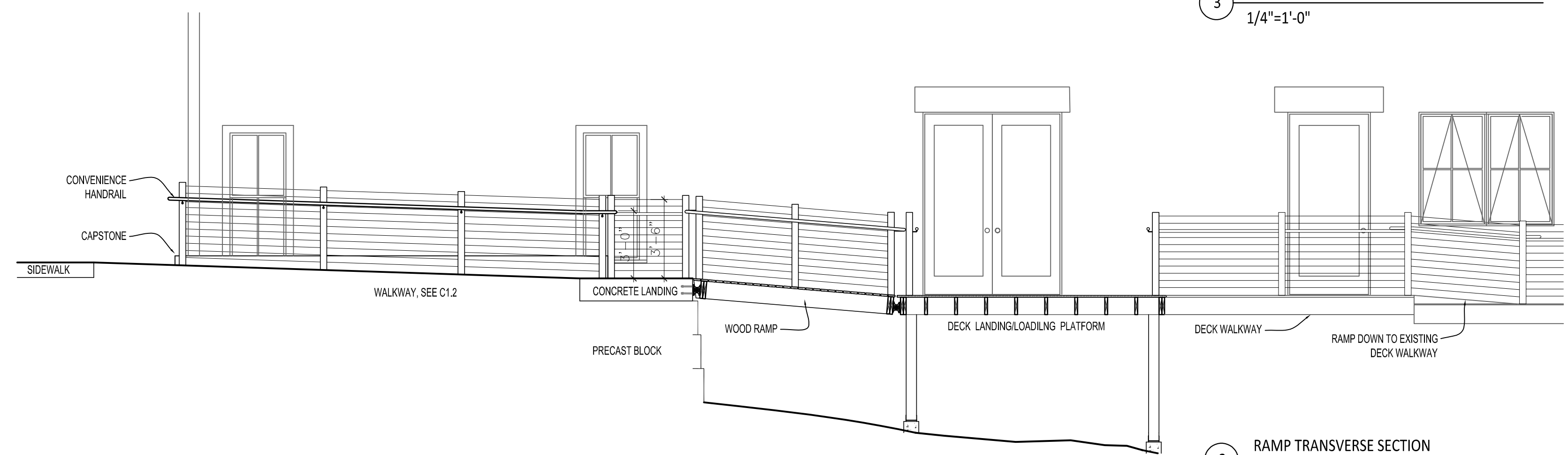


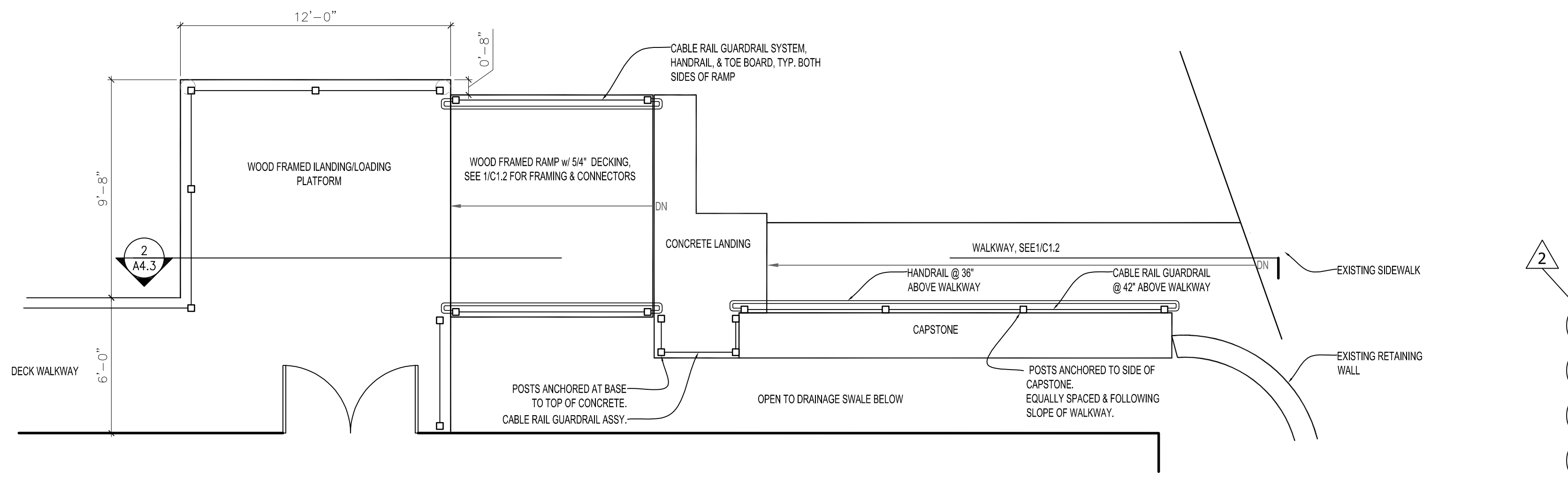
Rachel Conly Design LLC  
 26 Sterling Street  
 Peaks Island, Maine 04108  
 207.766.5625  
 www.rachelconlydesign.com



3 RAMP FRAMING PLAN  
 1/4"=1'-0"



2 RAMP TRANSVERSE SECTION  
 1/4"=1'-0"



1 WALKWAY & RAMP PLAN  
 1/4"=1'-0"

DATE	NOTES
2017.12.29	ISSUED FOR PERMIT
2018.01.16	1 TWO HOUR GROUP SEPARATION
2018.02.02	2 REVISED SITE - WALKWAY & RAMP

2 Island Ave.  
 Peaks Island, ME

RAMP  
 DETAILS

A4.3

PROJECT