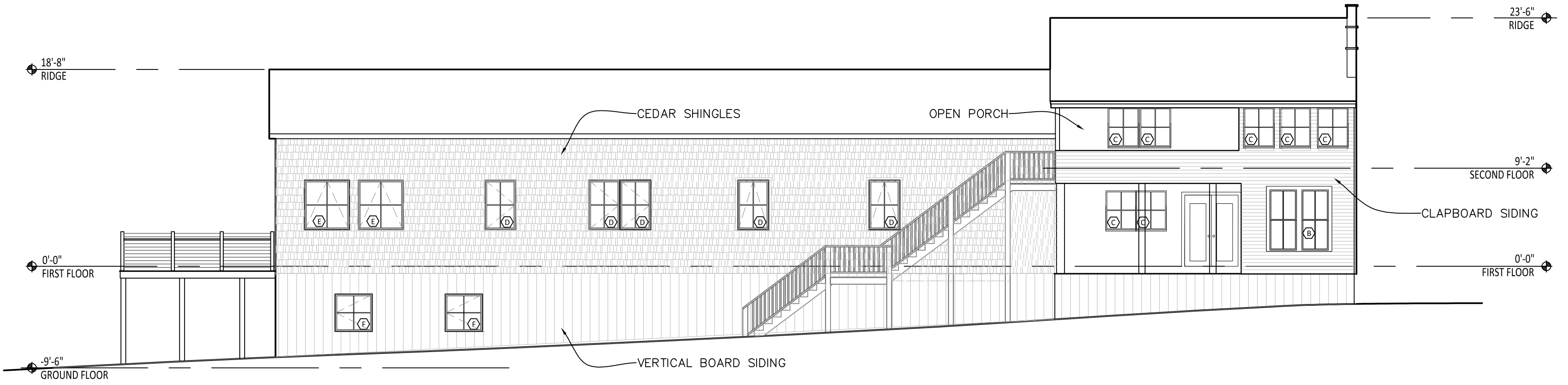
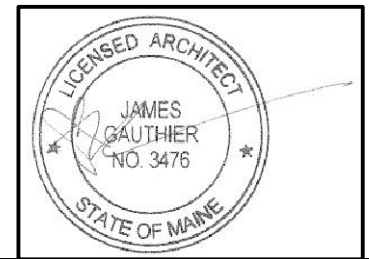


2 NORTH ELEVATION
1/8"=1'-0"



1 SOUTH ELEVATION
1/8"=1'-0"



Rachel Conly Design LLC
26 Sterling Street
Peaks Island, Maine 04108
207.766.5625
www.rachelconlydesign.com

DATE	NOTES
2017.12.29	ISSUED FOR PERMIT
2018.01.16	1 TWO HOUR GROUP SEPARATION
2018.02.02	2 REVISED SITE - WALKWAY & RAMP

PROJECT

2 Island Ave.
Peaks Island, ME

NORTH & SOUTH
ELEVATIONS

A2.1