

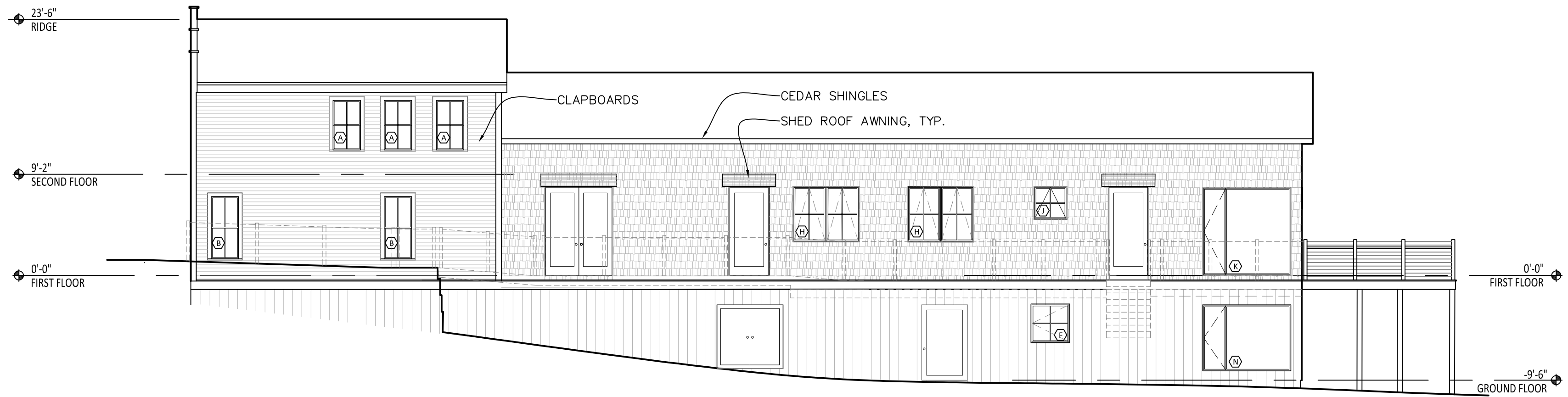
Rachel Conly Design LLC  
 26 Sterling Street  
 Peaks Island, Maine 04108  
 207.766.5625  
 www.rachelconlydesign.com

DATE	NOTES
2017.12.29	ISSUED FOR PERMIT
2018.01.16	1 TWO HOUR GROUP SEPARATION
2018.02.02	2 REVISED SITE - WALKWAY & RAMP
2018.02.22	3 SEPARATION DTLS & 1HR RATING @ SOUTH WALL
2018.03.22	4 REVISED WINDOWS @ SOUTH WALL PROJECTION

2 Island Ave.  
 Peaks Island, ME

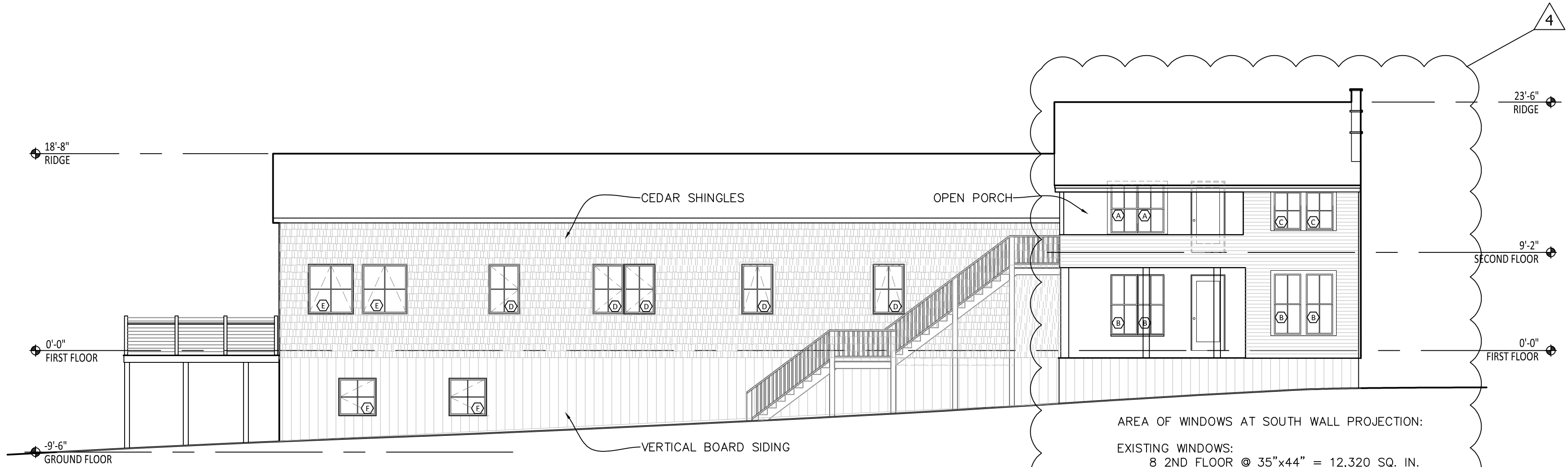
NORTH & SOUTH  
 ELEVATIONS

A2.1



NOTE: FOREGROUND  
 DECK SHOWN DASHED

2 NORTH ELEVATION  
 1/8"=1'-0"



AREA OF WINDOWS AT SOUTH WALL PROJECTION:

EXISTING WINDOWS:  
 8 2ND FLOOR @ 35"x44" = 12,320 SQ. IN.  
 1 1ST FLOOR @ 27"x51" = 1,377 SQ. IN.  
 TOTAL AREA = 13,697 SQ. IN.

NEW WINDOWS:  
 2 "C" @ 30"x43.5" = 2,610 SQ. IN.  
 2 "B" @ 30"x67.5" = 4,065 SQ. IN.  
 TOTAL AREA = 6,675 SQ. IN.

1 SOUTH ELEVATION  
 1/8"=1'-0"