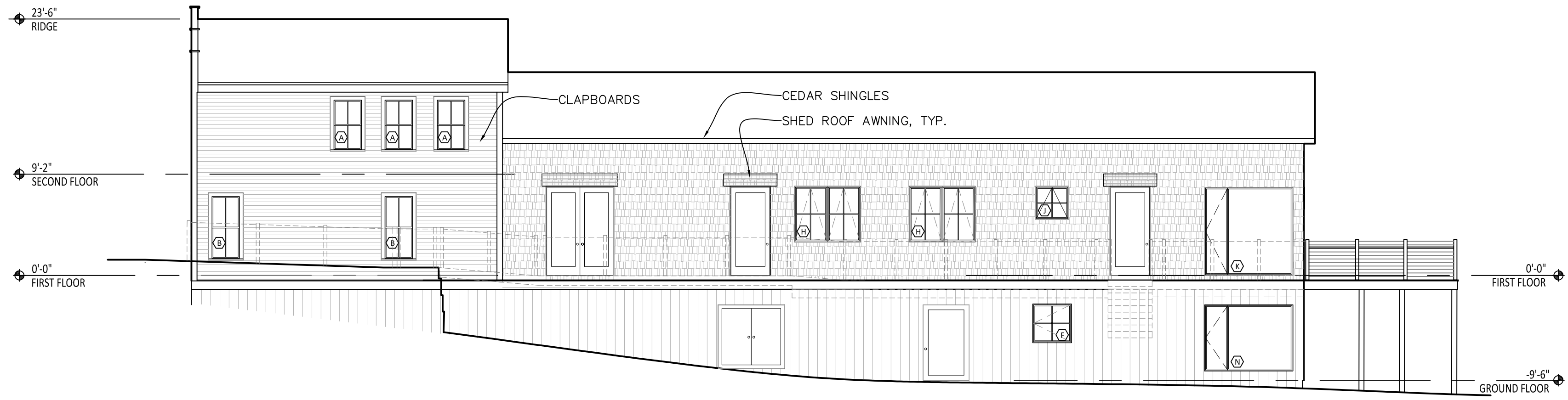


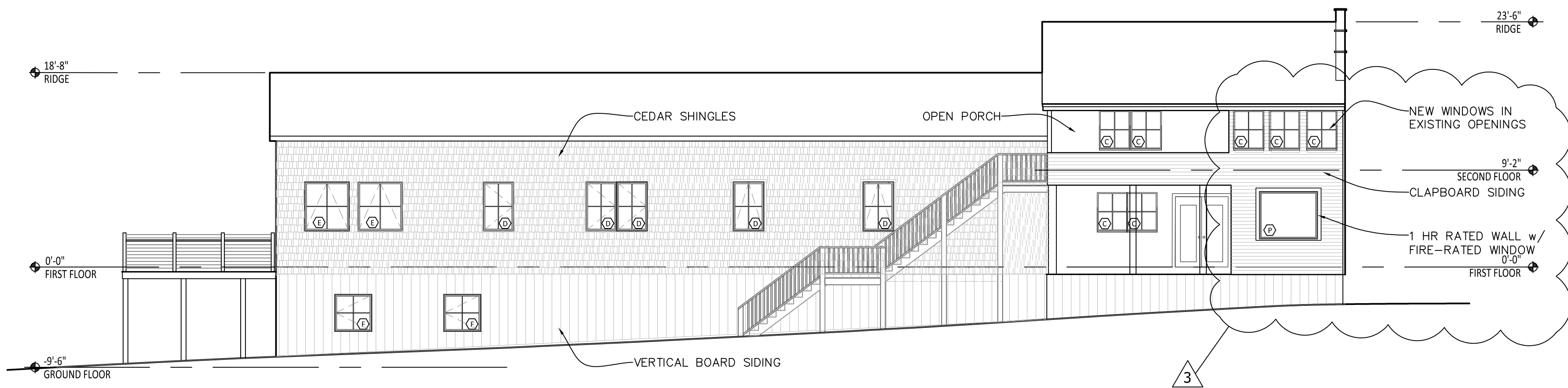
Rachel Conly Design LLC  
 26 Sterling Street  
 Peaks Island, Maine 04108  
 207.766.5625  
 www.rachelconlydesign.com



NOTE: FOREGROUND DECK SHOWN DASHED

2 NORTH ELEVATION  
 1/8"=1'-0"

DATE	NOTES
2017.12.29	ISSUED FOR PERMIT
2018.01.16	1 TWO HOUR GROUP SEPARATION
2018.02.02	2 REVISED SITE - WALKWAY & RAMP
2018.02.22	3 SEPARATION DTLS & 1HR RATING @ SOUTH WALL



1 SOUTH ELEVATION  
 1/8"=1'-0"

PROJECT  
 2 Island Ave.  
 Peaks Island, ME

NORTH & SOUTH ELEVATIONS  
**A2.1**