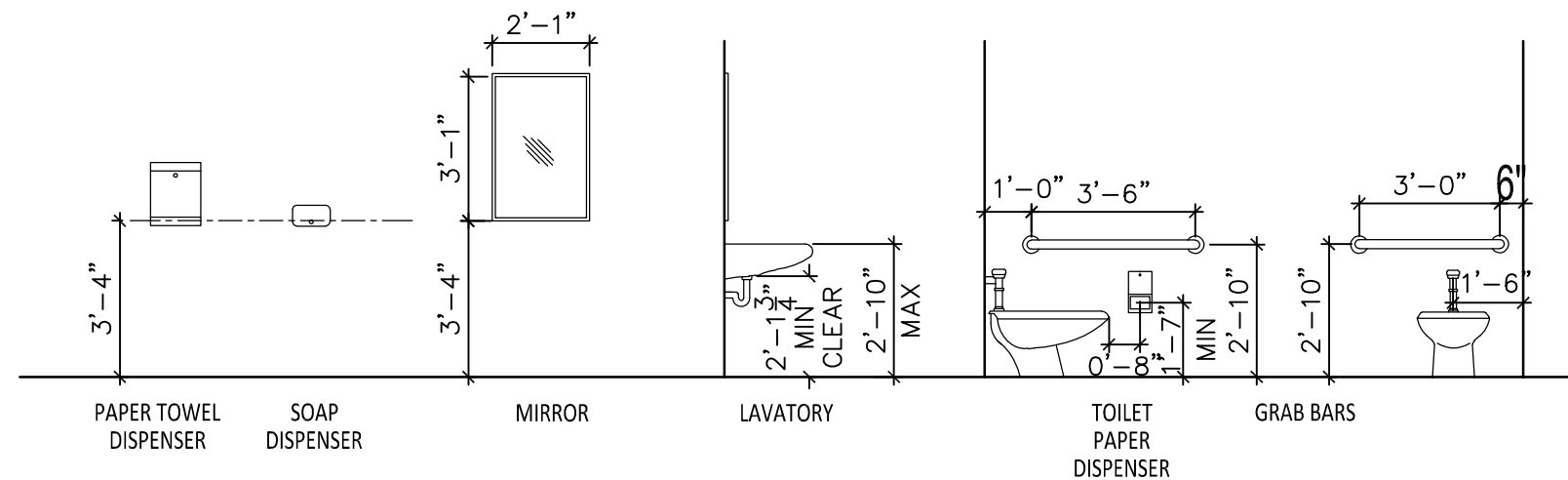


4 ENLARGED APT#2 BATH PLAN
1/4"=1'-0"



NOTE:
PROVIDE IN-WALL BLOCKING FOR ALL GRAB BARS, MIRRORS,
AND OWNER FURNISHED TOILET ACCESSORIES.

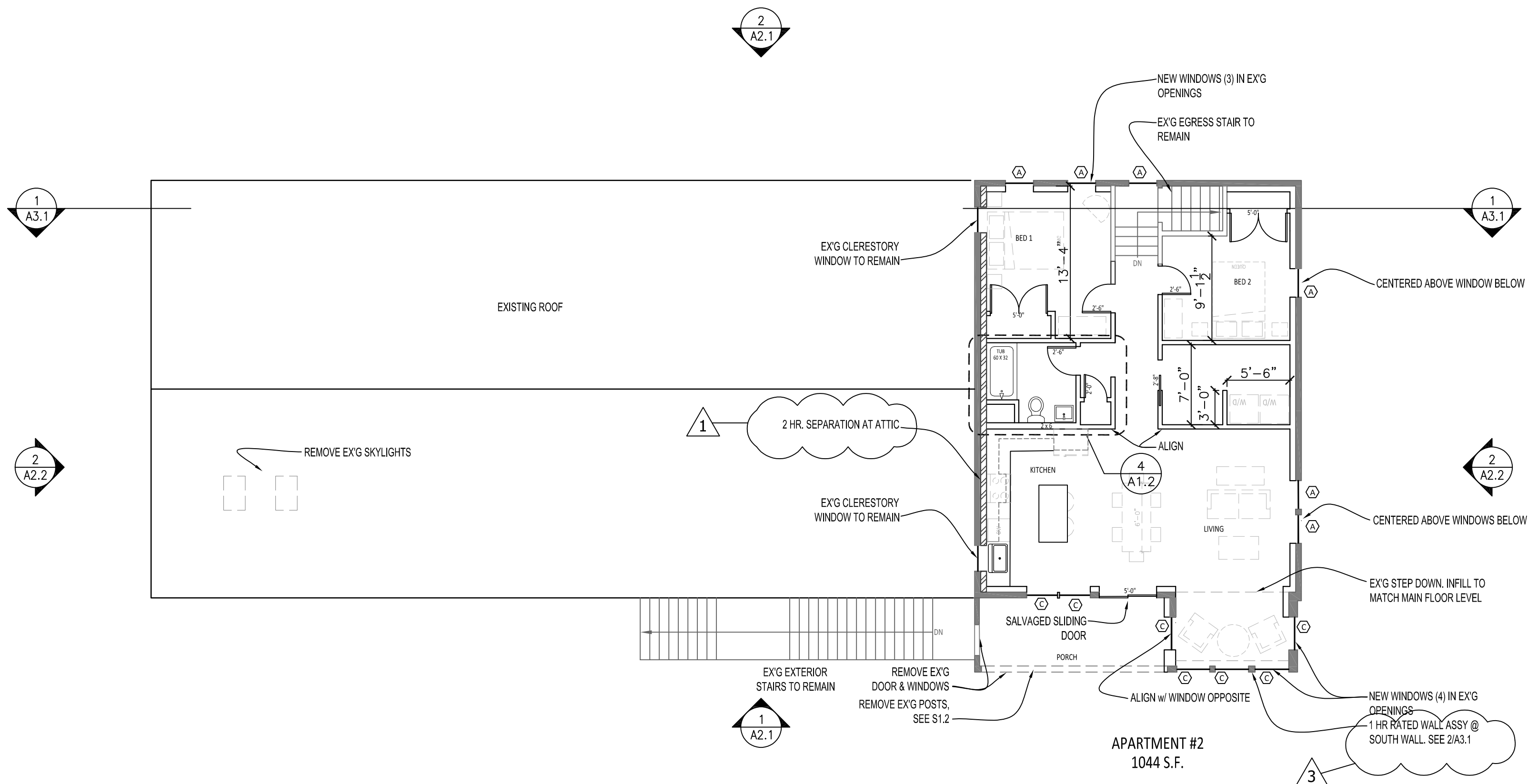
3 ADA TOILET RM MOUNTNG LOCATIONS
N.T.S.

ACCESSIBILITY NOTES

PROVIDE ADA ACCESSIBILITY TO BUSINESS OCCUPANCY INCLUDING BUT NOT LIMITED TO:

- ACCESSIBLE ROUTE FROM SIDEWALK TO ENTRY INCLUDING RAMP w/ SLOPE <1:12.
- RAMP w/ HANDRAILS & SLOPE <1:12 TO LANDING AT ENTRY DOOR.
- THRESHOLD <1/2" AT DOORS.
- 32" CLEAR OPENING BETWEEN LATCH SIDE STOP & OPEN DOOR LEAF AT DOORS.
- MANEUVERING CLEARANCES AND TURNING SPACES AT DOORS & OTHER OBSTACLES.
- ACCESSIBLE TOILET ROOM INCLUDING FIXTURES, HANDLES, REACH RANGES, & CLEARANCES.
- LEVER DOOR HANDLES.
- ONE ACCESSIBLE WORKSTATION.

2 ACCESSIBILITY NOTES

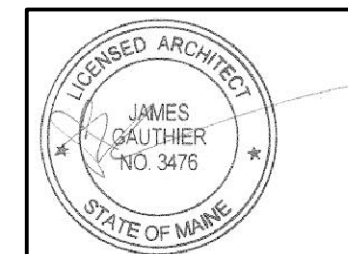


PARTITION TYPES KEY

	EXISTING TO REMAIN
	NEW PARTITION
	2 HR ASSEMBLY
	1/2 HR ASSEMBLY

- FLOOR PLAN NOTES
- DIMENSIONS TO FINISH FACE OF WALL & CENTERLINE OF DOORS & WINDOWS.
 - CLOSETS 2'-0" CLEAR INSIDE, TYP.
 - DOOR HINGE JAMB 4" FROM CORNER, TYP, U.N.O.

1 SECOND FLOOR PLAN
1/8"=1'-0"



Rachel Conly Design LLC
26 Sterling Street
Peaks Island, Maine 04108
207.766.5625
www.rachelconlydesign.com

DATE	NOTES
2017.12.29	ISSUED FOR PERMIT
2018.01.16	1 TWO HOUR GROUP SEPARATION
2018.02.02	2 REVISED SITE - WALKWAY & RAMP
2018.02.22	3 SEPARATION DTLS & 1HR RATING @ SOUTH WALL



PROJECT
2 Island Ave.
Peaks Island, ME

SECOND FLOOR PLAN

A1.2