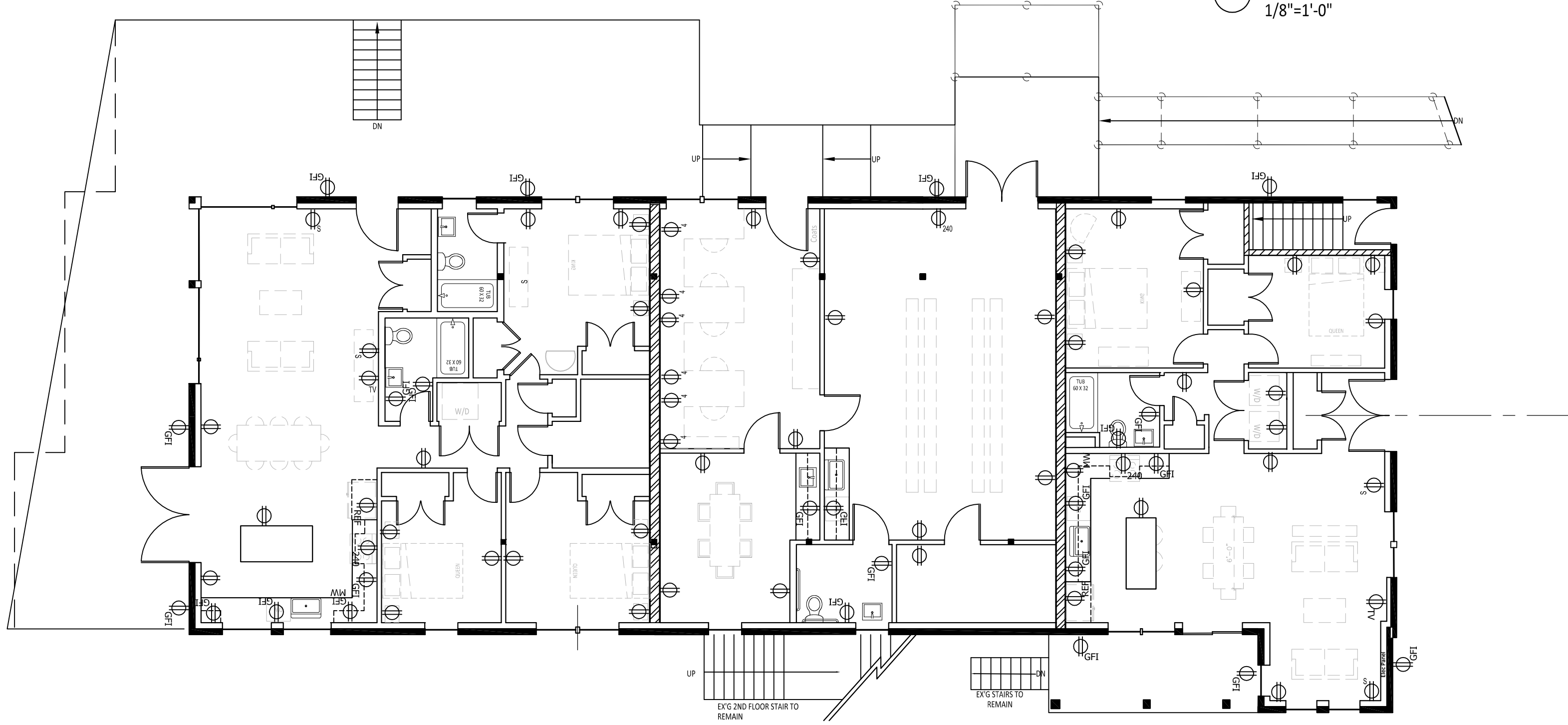


2 FIRST FLOOR LIGHTING PLAN
1/8"=1'-0"



1 FIRST FLOOR POWER PLAN
1/8"=1'-0"

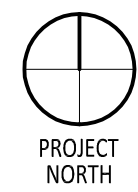
- 3 ELECTRICAL LEGEND
N.T.S.
- DUPLEX
 - GFI
 - 220 VOLT
 - 240
 - SWITCH
 - 3-WAY SWITCH
 - DIMMER SWITCH
 - SMOKE DETECTOR
 - SMOKE & CO DETECTOR
 - EXIT SIGN
 - EMERGENCY LIGHT
 - VENTILATION FAN
MIN 50 C.F.M.
 - FAN-LIGHT COMBINATION
MIN 50 C.F.M.
 - CEILING MOUNT LIGHT FIXTURE
 - PENDANT LIGHT FIXTURE
 - RECESSED CAN LIGHT FIXTURE
 - WALL SCONCE LIGHT FIXTURE
 - WALL SCONCE WET LOCATION LIGHT FIXTURE
 - TRACK LIGHTING
 - LED STRIP LIGHT FIXTURE
 - UNDER COUNTER LIGHT FIXTURE
 - CEILING FAN
 - CEILING FAN/LIGHT

ELECTRICAL PLAN NOTES

- ELECTRICAL POWER & LIGHTING PLANS WERE NOT CREATED BY LICENSED PROFESSIONAL ELECTRICAL ENGINEER.
- THEY ARE FOR CLIENT USE AS DESIGN GUIDANCE ONLY.
- LICENSED ELECTRICIAN RESPONSIBLE TO ENSURE THAT ALL INSTALLATIONS MEET CURRENT CODE REQUIREMENTS.

Rachel Conly Design LLC
26 Sterling Street
Peaks Island, Maine 04108
207.766.5625
www.rachelconlydesign.com

NOTES	ISSUED FOR PERMIT
DATE	2017.12.29
REVISION	



PROJECT
2 Island Ave.
Peaks Island, ME

FIRST FLOOR
POWER & LIGHTING
PLANS

E1.1