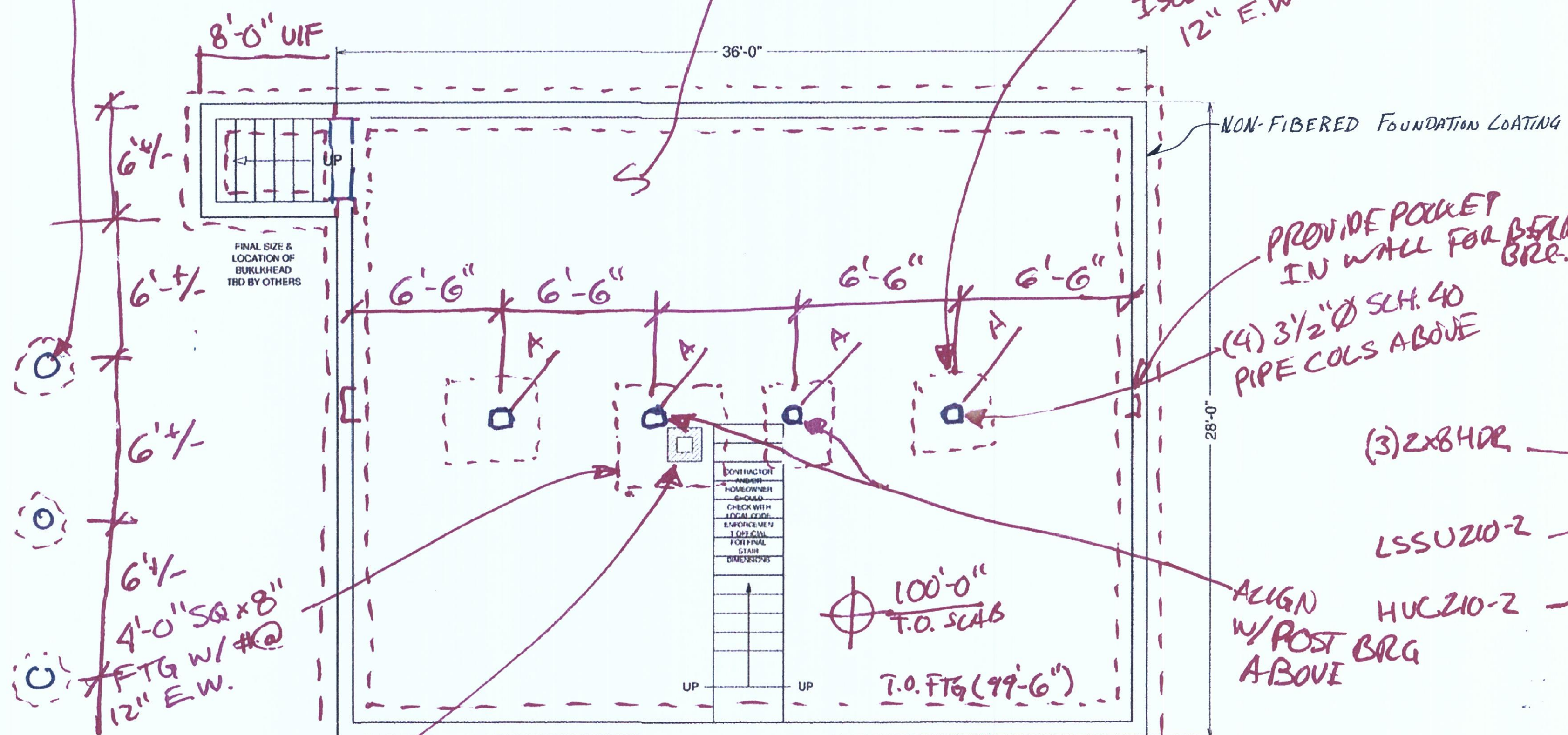


8"Ø CONC PER W/(2) #4 UERTS
ON 20"Ø BIG FOOT FTG W/ 4'-0"
MIN FROST PROTECTION.

4" THICK CONC SLAB (W/ FIBERMESH & CONTROL JOINTS
@ 10'-0" O.C. MAX) ON VAPOR BARRIER ON 6" MIN
3/4" CRUSHED STONE ON VIRGIN SOIL.
* ASSUMED 1,500 PSF SOIL. VERIFY IN FIELD.

(3) 3'-0" x 3'-0" x 8" DEEP
ISOLATED FTG W/ (3) #4@
12" E.W.

(3) 2x6 HOR - TYP UND
IT - TYP UND BELOW

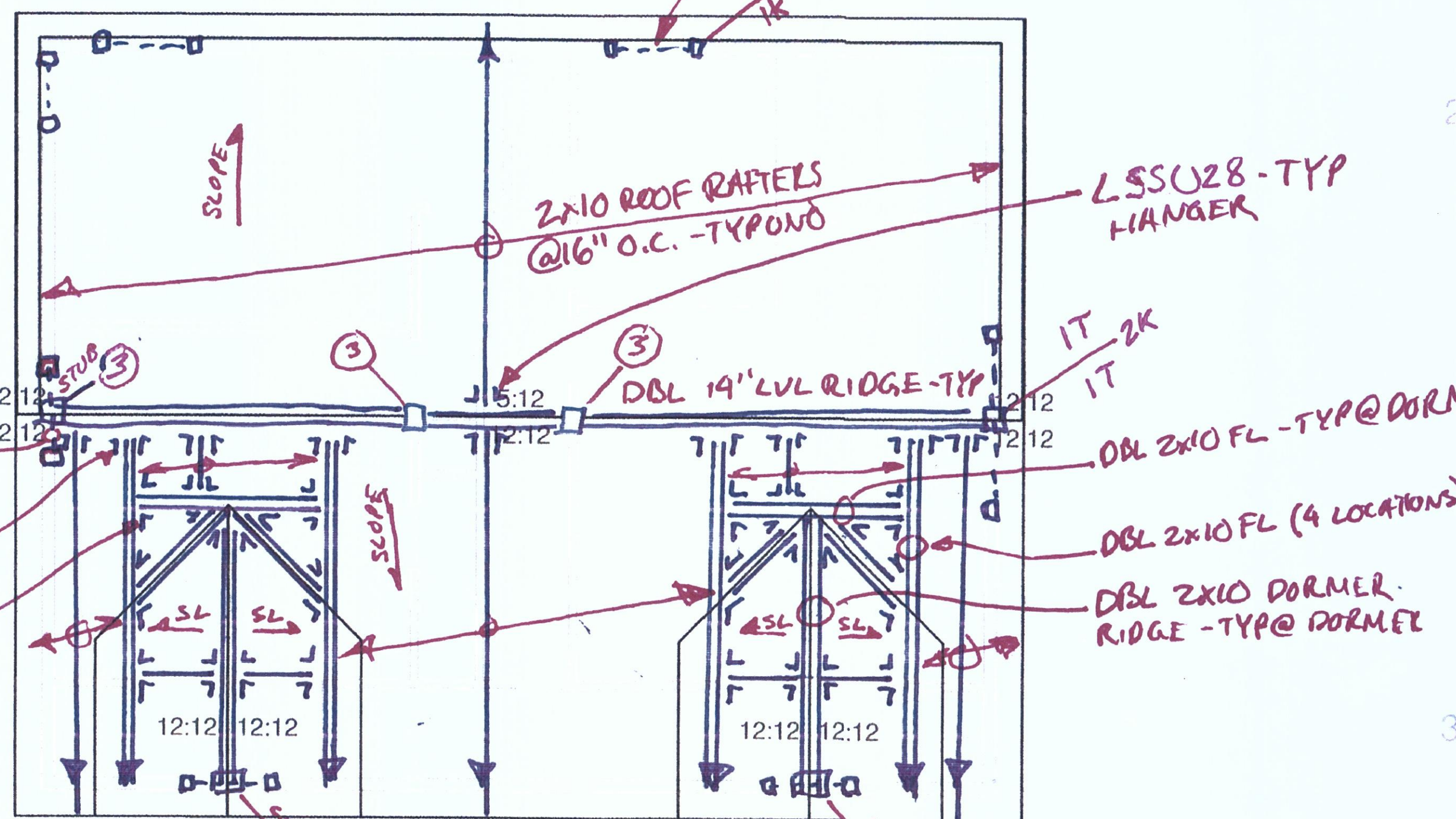


FOUNDATION PLAN

MASONRY CHIMNEY
BEARSON OVER
SIZEP FTG.

8" WIDE 3,500PSI CONC
WALL - TYP W/ REINFORCING
PER SECTION

20" WIDE x 8" DEEP CONC FTG
W/ (2) #4 CONT. - TYP.

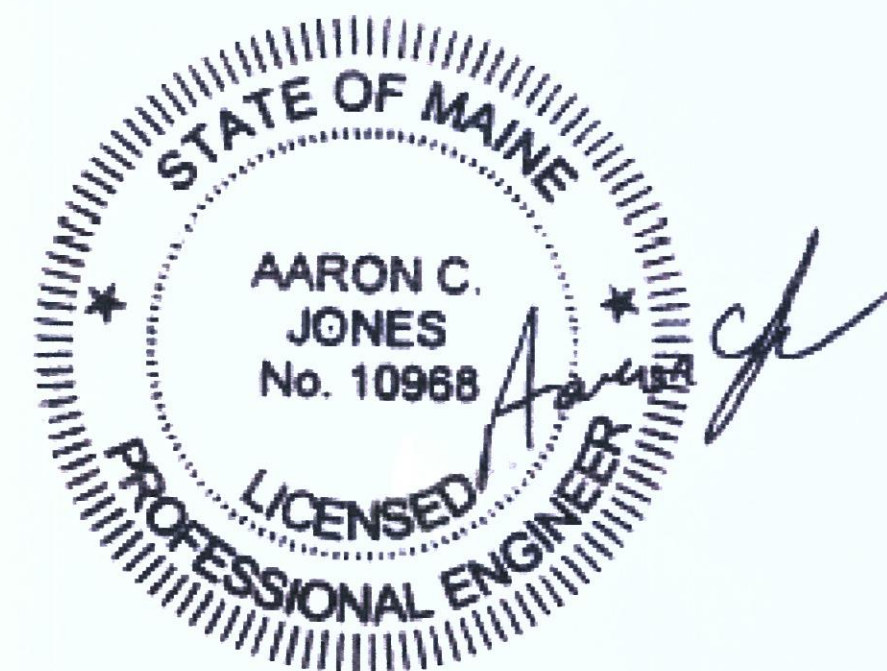


ROOF FRAMING PLAN

- ROOF SHEATHING: 5/8" OSB OR PLYWOOD W/ FASTENING PER IBC/IRC.

STRUCTURAL REDLINES

MKL 9/9/14
MULKERN RES
SI# 14-0147
4 Adams St.
PEAK'S ISLAND, ME



DISCLAIMER
DRAWINGS ARE PROVIDED BY HAMMOND LUMBER COMPANY TO ITS CUSTOMERS AND ARE INTENDED FOR INFORMATIONAL AND ILLUSTRATIVE PURPOSES ONLY. THE ILLUSTRATIONS PRESENTED IN THESE DRAWINGS ARE NOT TO BE USED AS A BASIS FOR CONSTRUCTION. HAMMOND LUMBER COMPANY AND ITS AGENTS AND ARCHITECTS SHALL NOT BE RESPONSIBLE FOR OBTAINING PERMITS OR FOR THE ACCURACY OF ANY INFORMATION. CUSTOMERS SEEK THE SERVICES OF A REGISTERED ARCHITECT TO OBTAIN PERMITS AND TO PROCEED WITH THE PROJECT. HAMMOND LUMBER COMPANY DISCLAIMS ANY RESPONSIBILITY IF THEY ARE SO USED.

HOME PLANNING CENTER
Drafting & Estimating
Hammond Lumber Company

DRAWING NUMBER	CP14015
PRINT DATE	4/23/2014
PROJECT	POR
TRAINING LEVEL	1/4" = 1'0"
PAGE #	2 of 4

REVISIONS	PRE: 04/15/14	R1: 04/22/14	R2: MM/DD/YY	FNL: 04/23/14
PREPARED BY:	BEP	SCALE/PROF:	RGH	

GREENVILLE	17 VANDERBILT AVE	207-771-8800	2014.04.13.12
FARMINGTON	389 FARMINGTON FALLS RD	207-771-8800	2014.04.13.12
PORTLAND	500 BROAD ST	207-771-8800	2014.04.13.12

FARFIELD	5 SUMMIT ST	207-453-3333	2014.04.13.12
DAMARISCOTTA	511 MAIN ST	207-453-3333	2014.04.13.12
BRUNSWICK	30 SPURNS ST	207-453-3333	2014.04.13.12

BOOTHBAY HARBOR	276 SOWSAND AVE	207-453-3333	2014.04.13.12
BELGRADE	P.O. BOX 500	207-453-3333	2014.04.13.12
BANGOR	107 HAMMOND ST	207-453-3333	2014.04.13.12

MATTHEW MULKERN

12 LOCATIONS TO SERVE YOU BETTER
www.hammondlumber.com