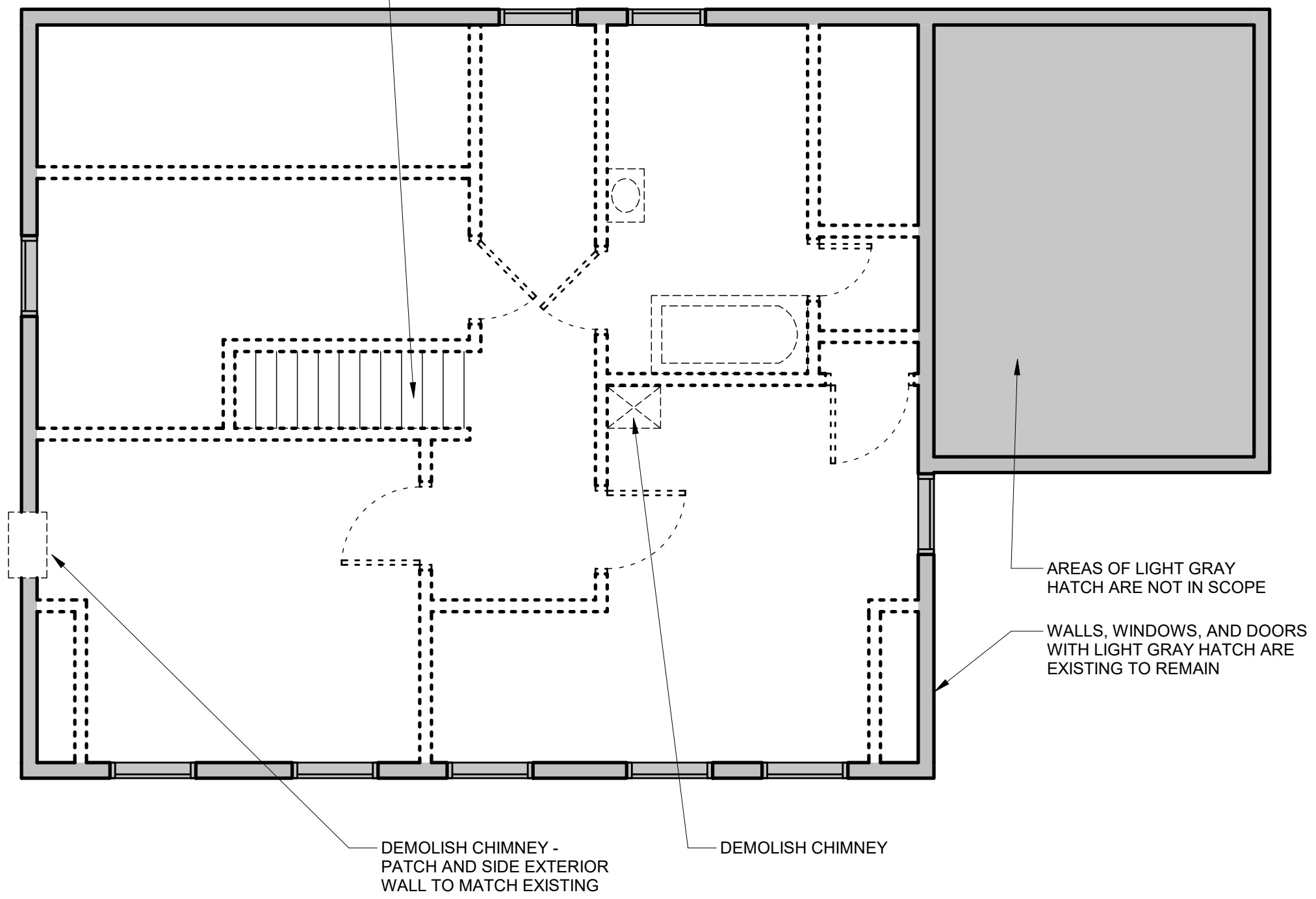


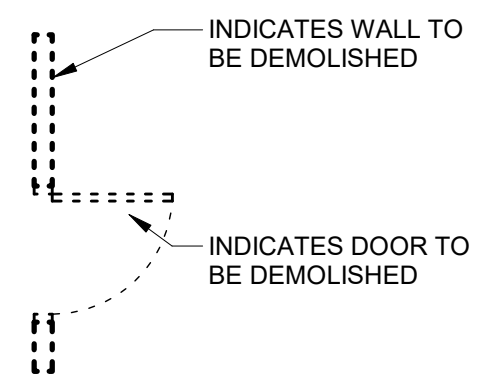
STAIR TO REMAIN -
PROVIDE TEMPORARY
RAILING AT OPENING



DEMOLITION NOTES

1. DEMOLISH ALL WIRING BACK TO PANEL
2. DEMOLISH ALL PLUMBING FIXTURES
3. DEMOLISH ALL WALLS AND DOORS
4. DEMOLISH ALL CEILINGS AND FLOORING

DEMOLITION KEY



1 Second Floor Demolition Plan
1/4" = 1'-0"