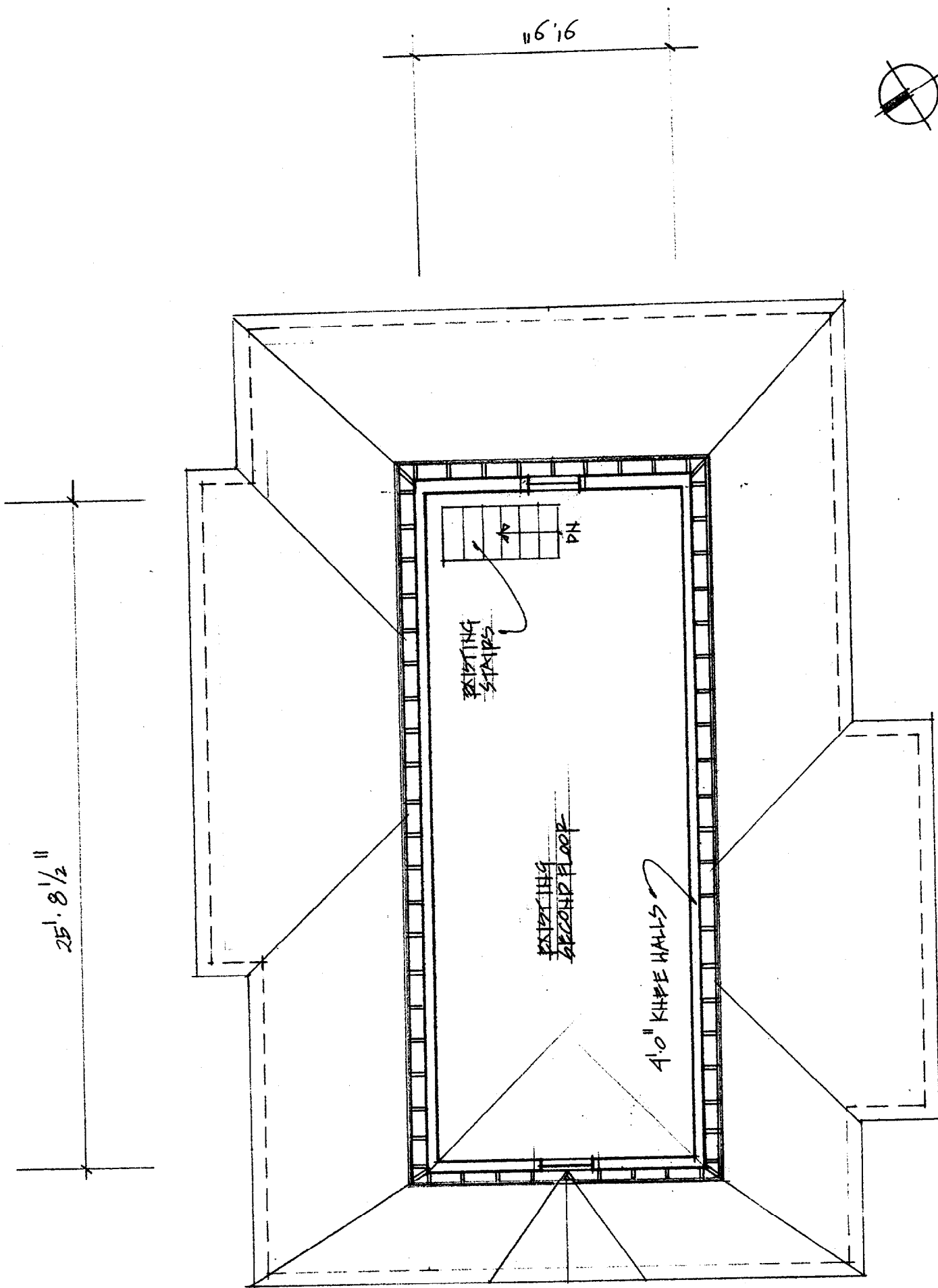
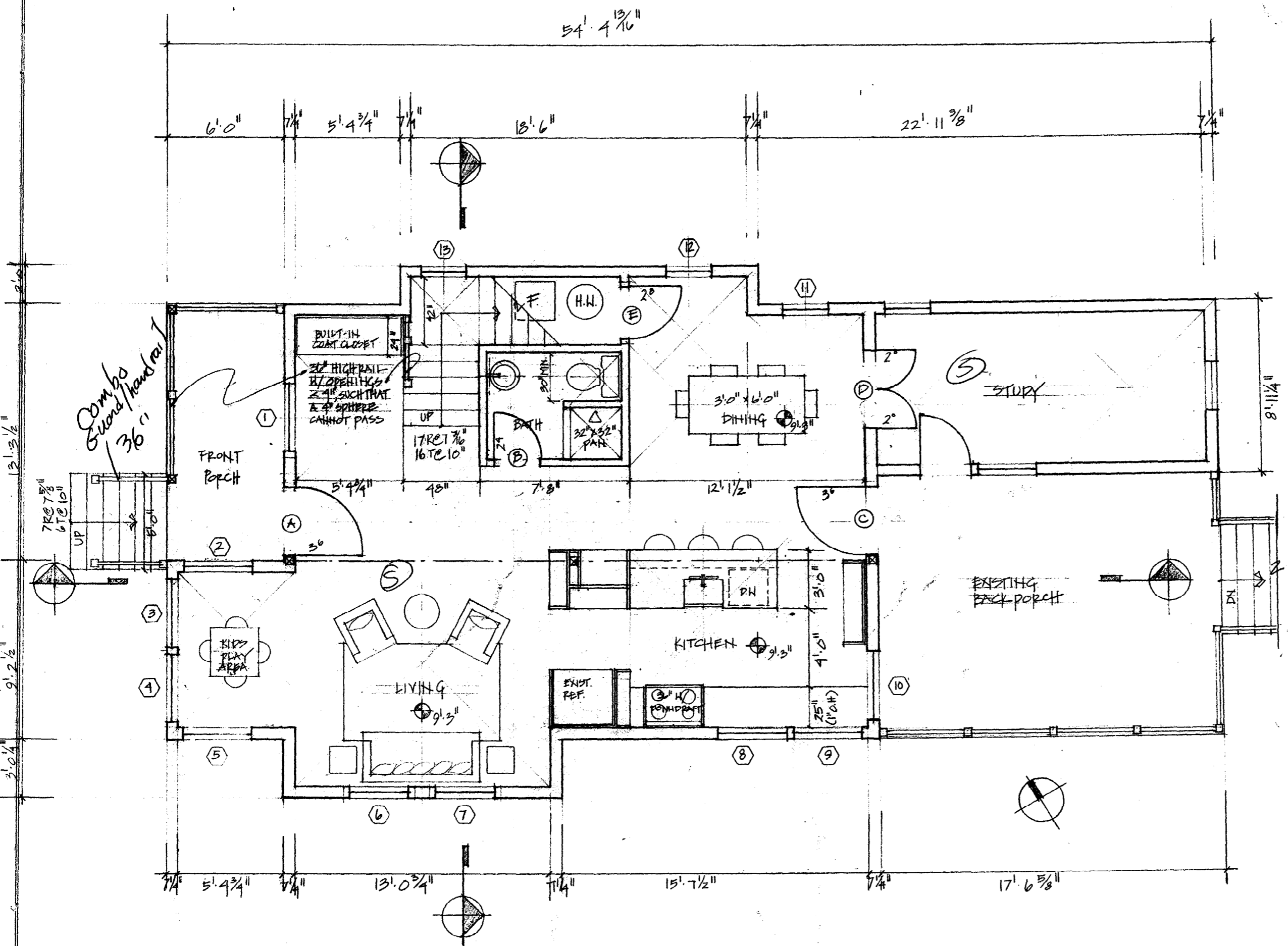


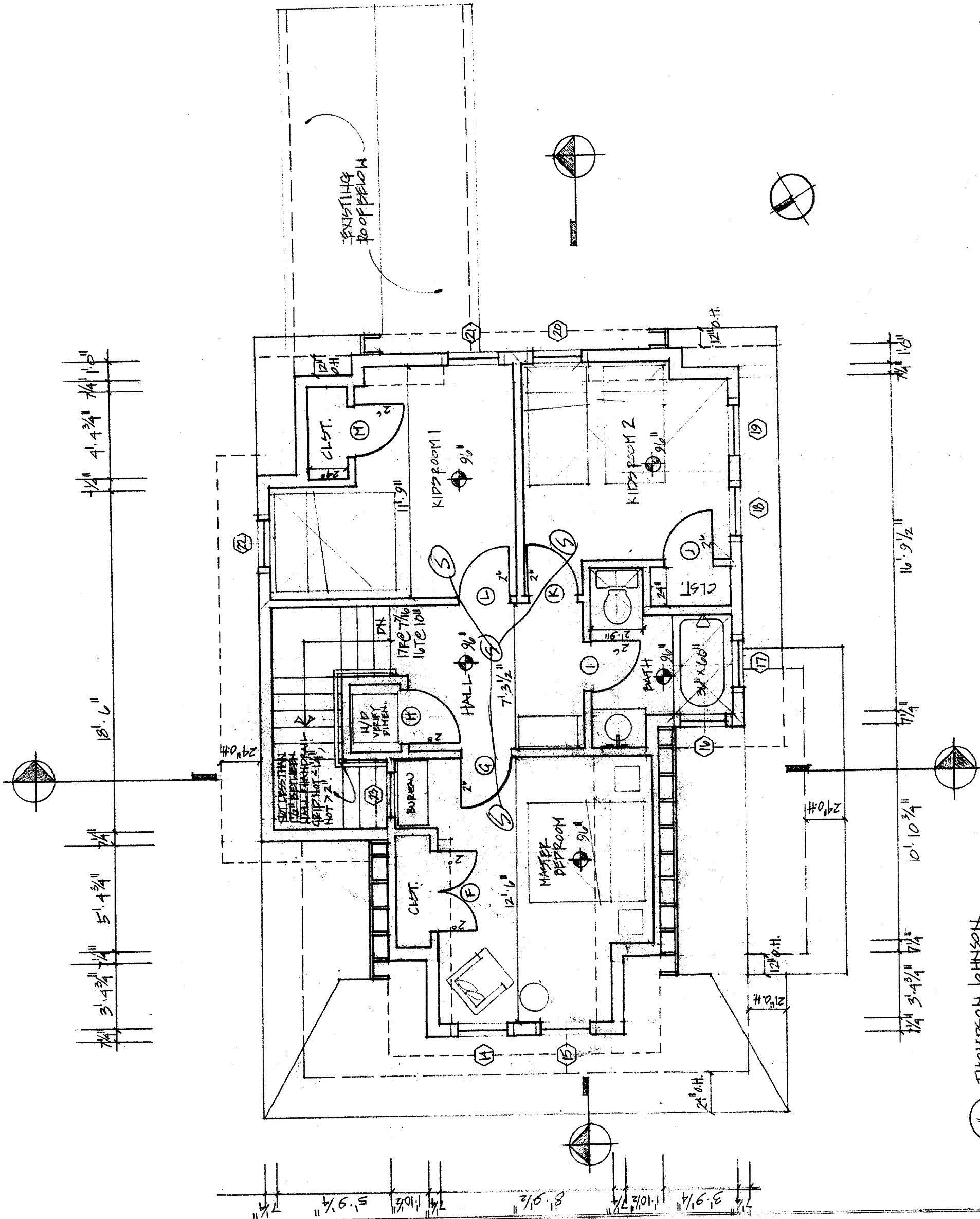
⊙ A THOMPSON JOHNSON
 SITE PLAN 1/8" = 1' 0"



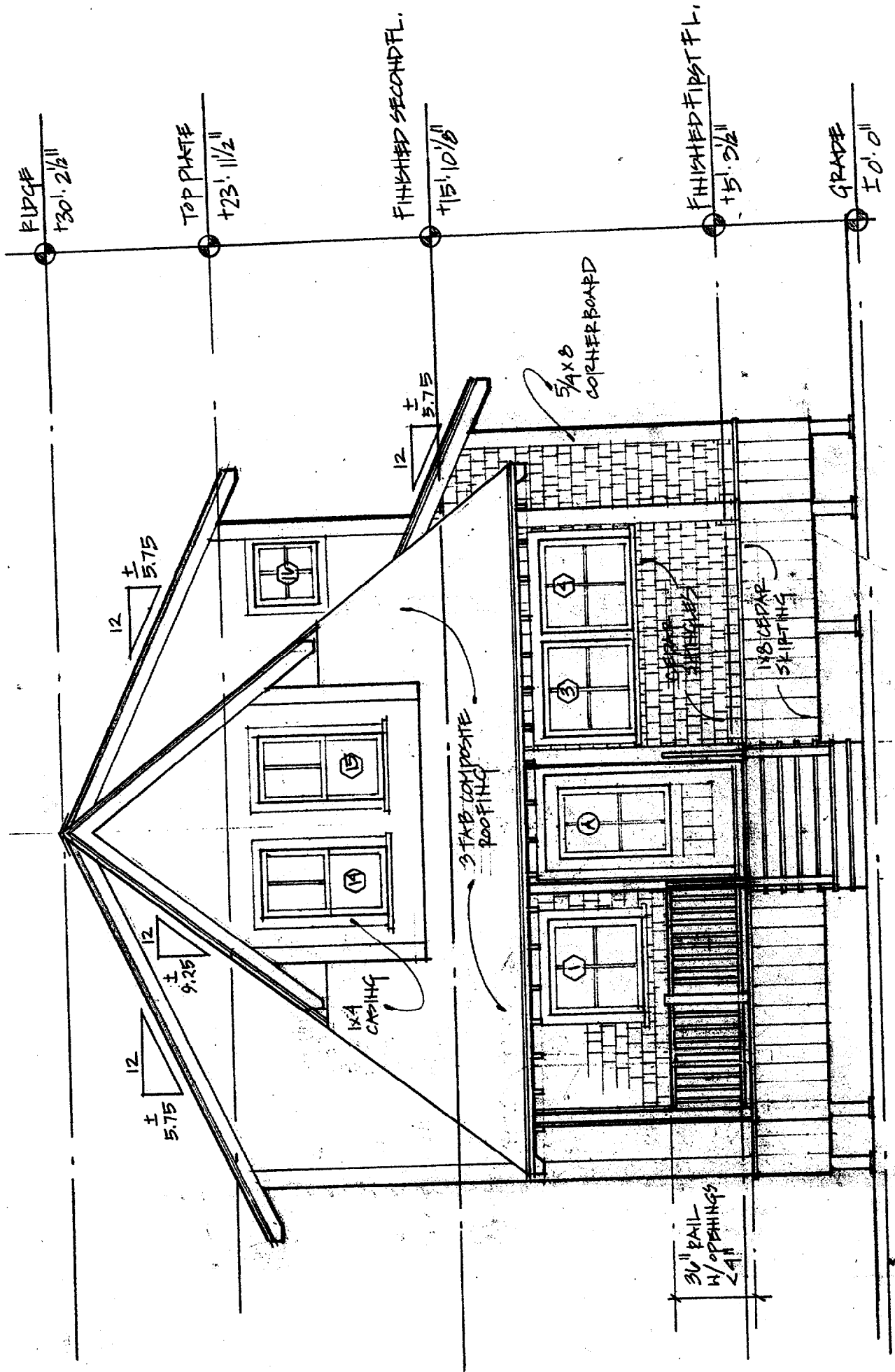
(A) THOMPSON JOHNSON
 EXISTING SECOND FL.
 1/4" = 1'-0"



(A) THOMPSON JOHNSON
 PROPOSED FIRST FL.
 11.11-11.20"



A THOMPSON JOHNSON
 PROPOSED SECOND FL.
 1/8" = 1'-0"



RIDGE
+30' 2 1/2"

TOP PLATE
+23' 11 1/2"

FINISHED SECOND FL.
+15' 10 1/8"

FINISHED FIRST FL.
+5' 3 1/2"

GRADE
+0' 0"

12
± 5.75

12
± 5.75
12
± 9.25

12
± 5.75

3 TAB COMPOSITE
ROOFING

3/4 x 8
CORNER BOARD

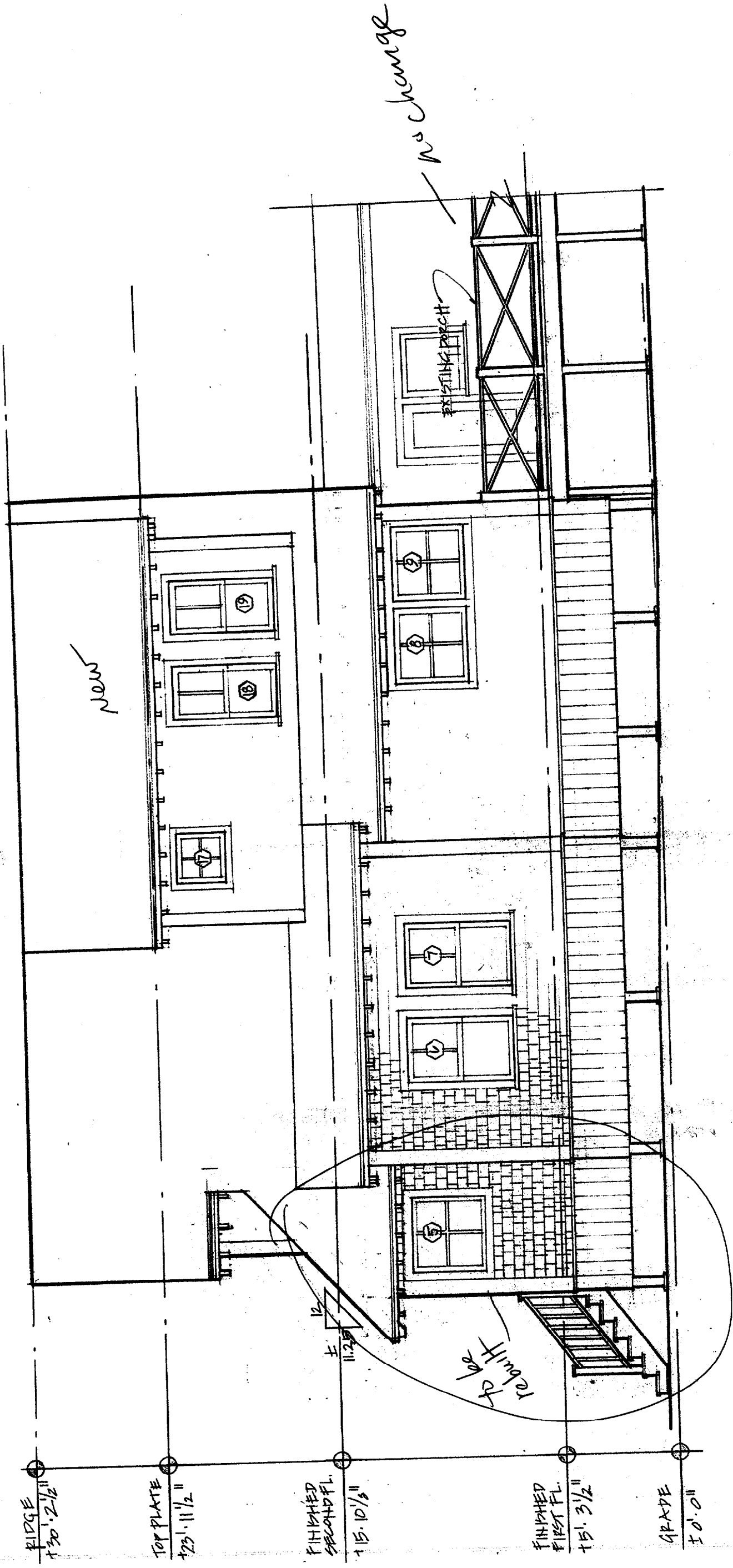
1 1/2 x 8 CEDAR
SKIPLING

1 x 4
CASING

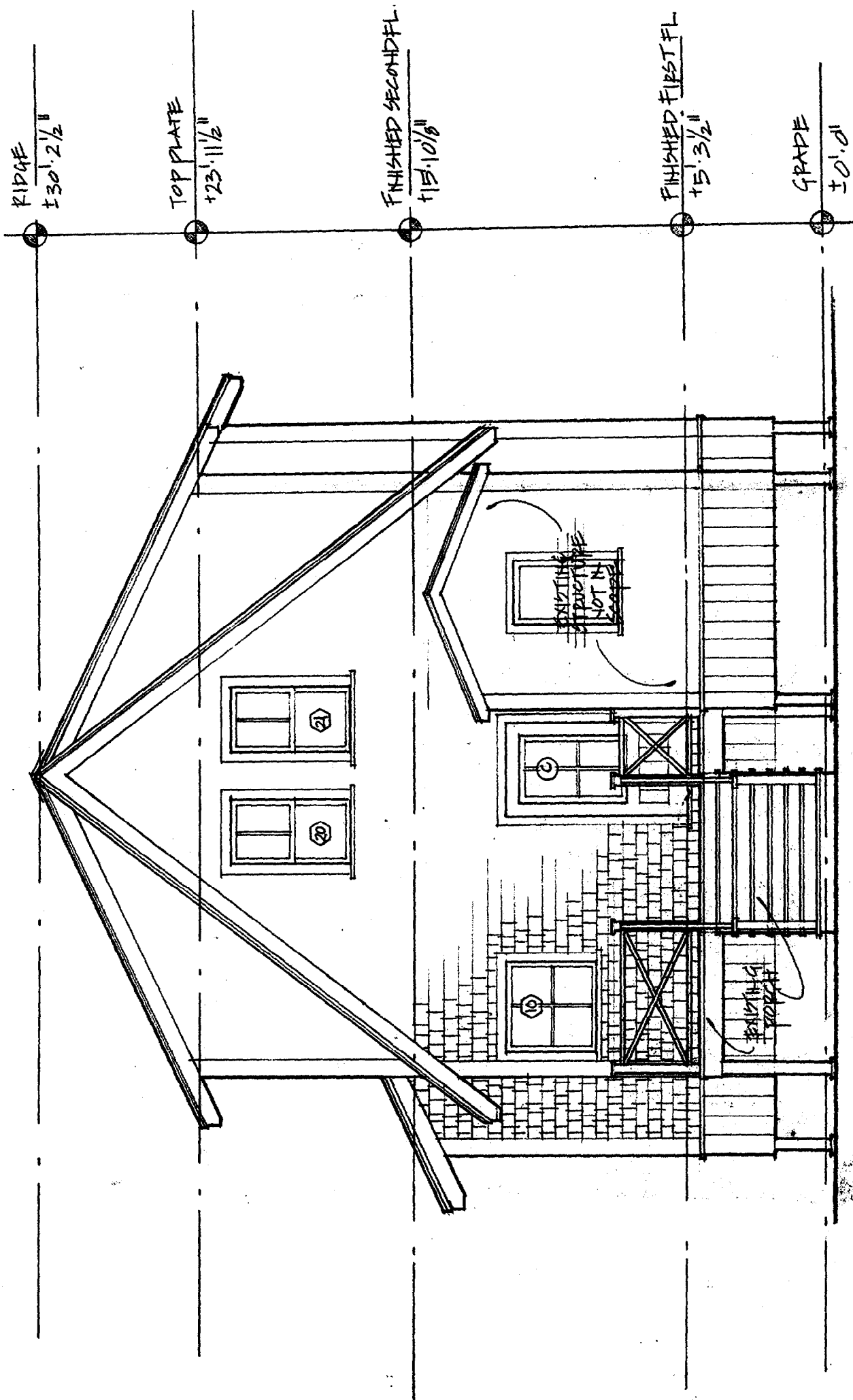
3 1/2" RAIL
W/ OPENINGS
2 1/4"

THOMPSON JOHNSON
WEST ELEVATION
1/4" = 1'-0"



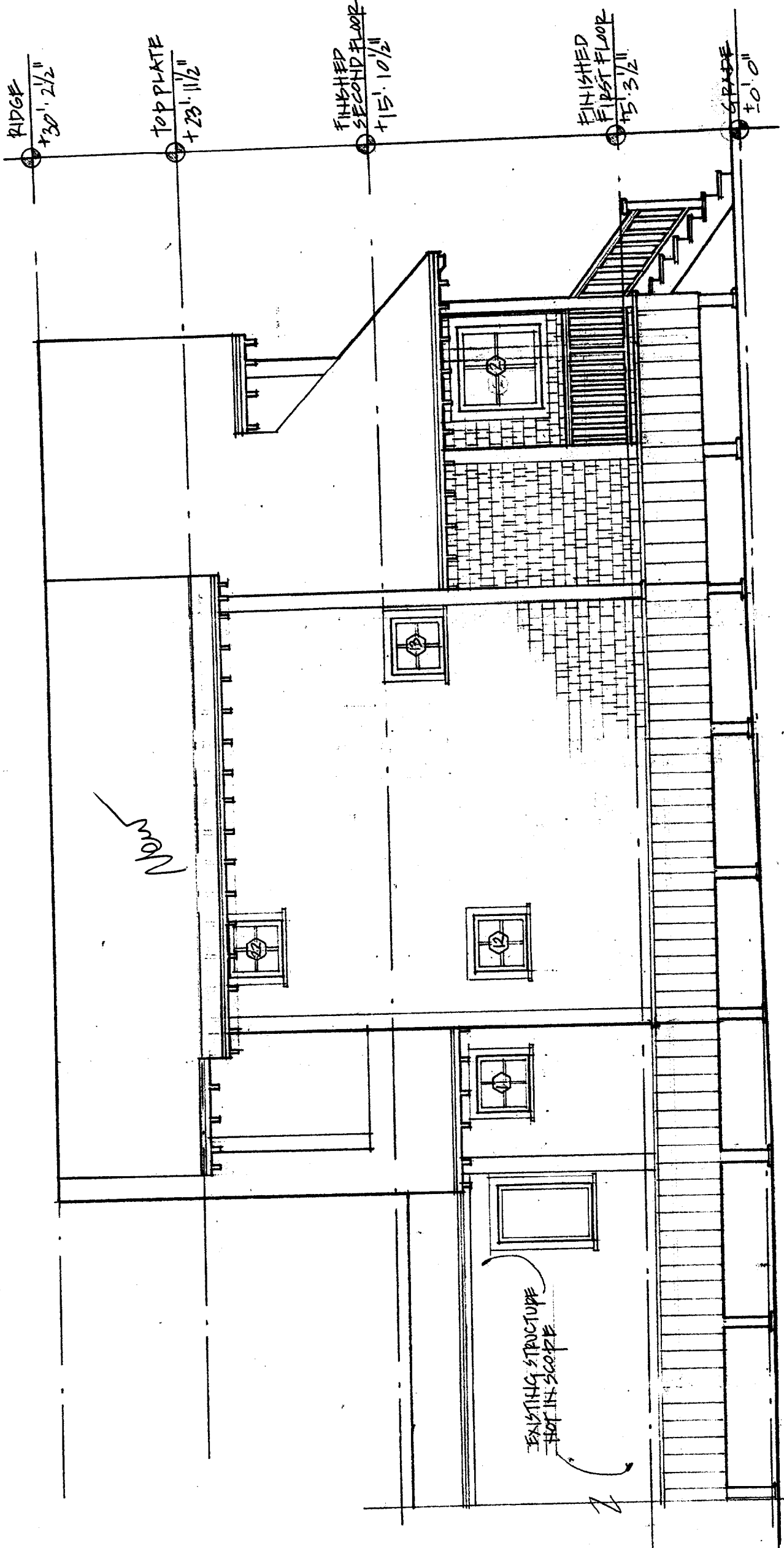


(A) THOMPSON JOHNSON
 SOUTH ELEVATION
 1/4" = 1'-0"



Thompson Johnson
 EAST ELEVATION
 1/4" = 1'-0"

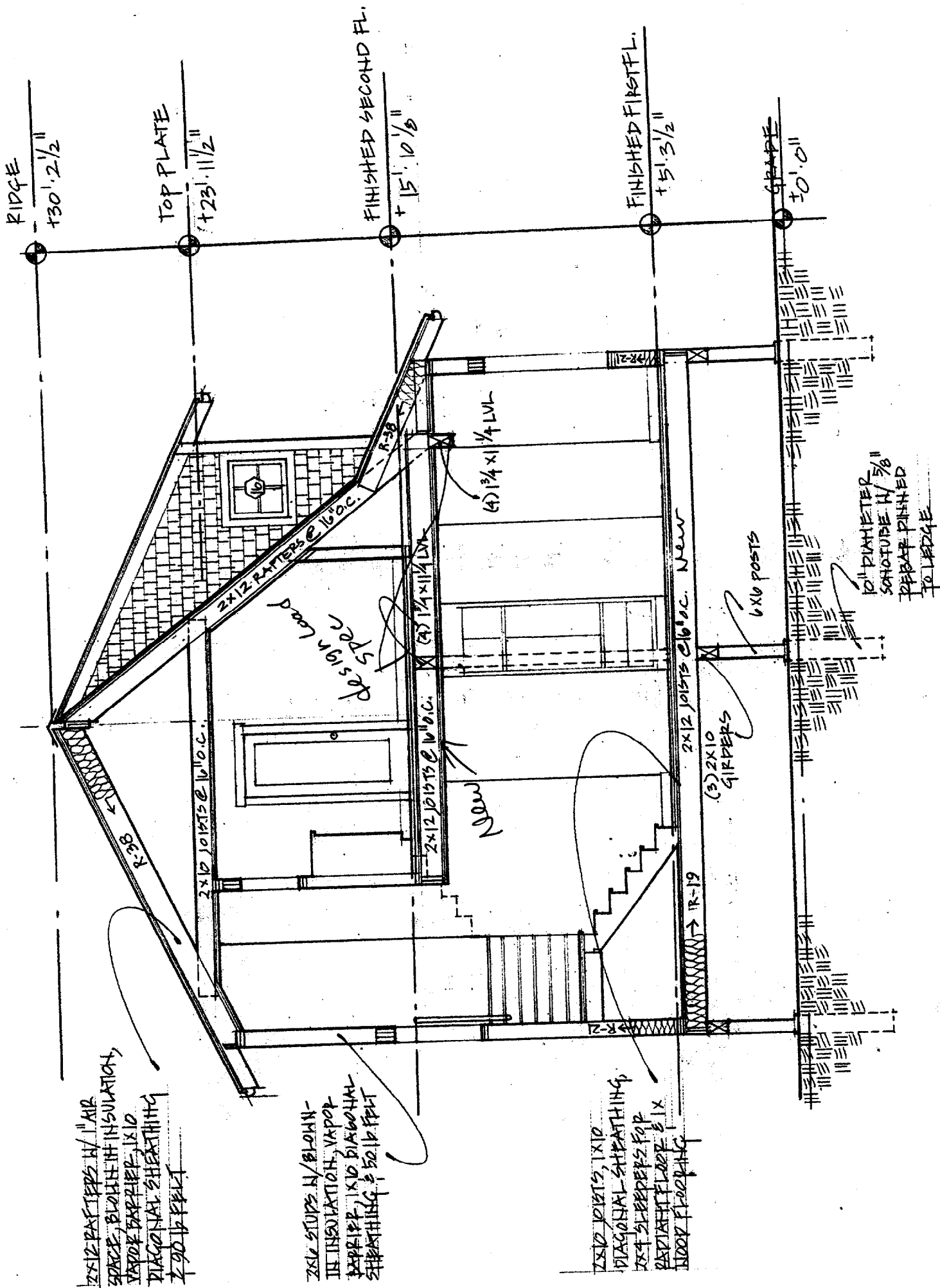
AX



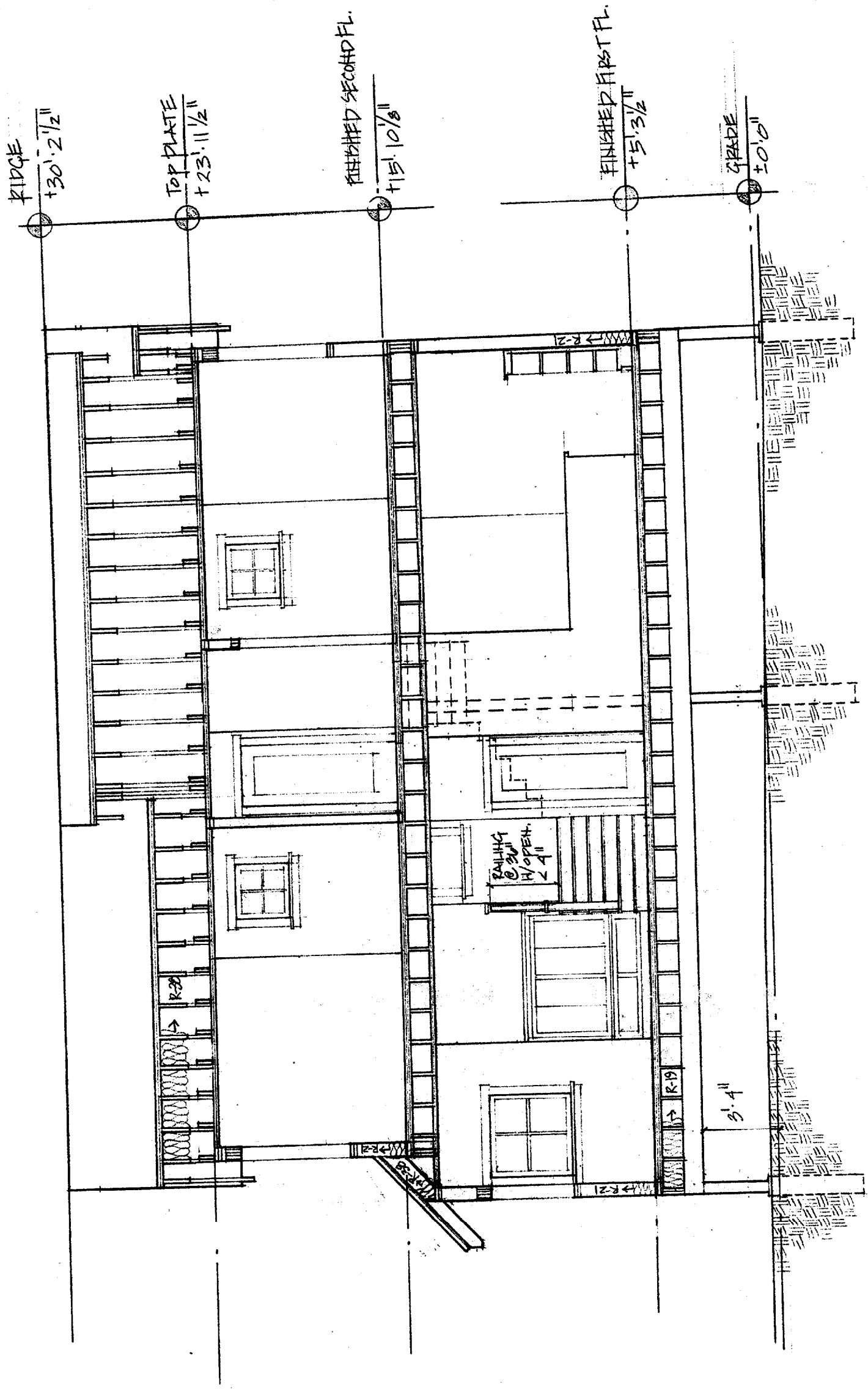
PAGE EIGHT

Thompson Johnson
 NORTH ELEVATION
 1/4" = 1'-0"

A



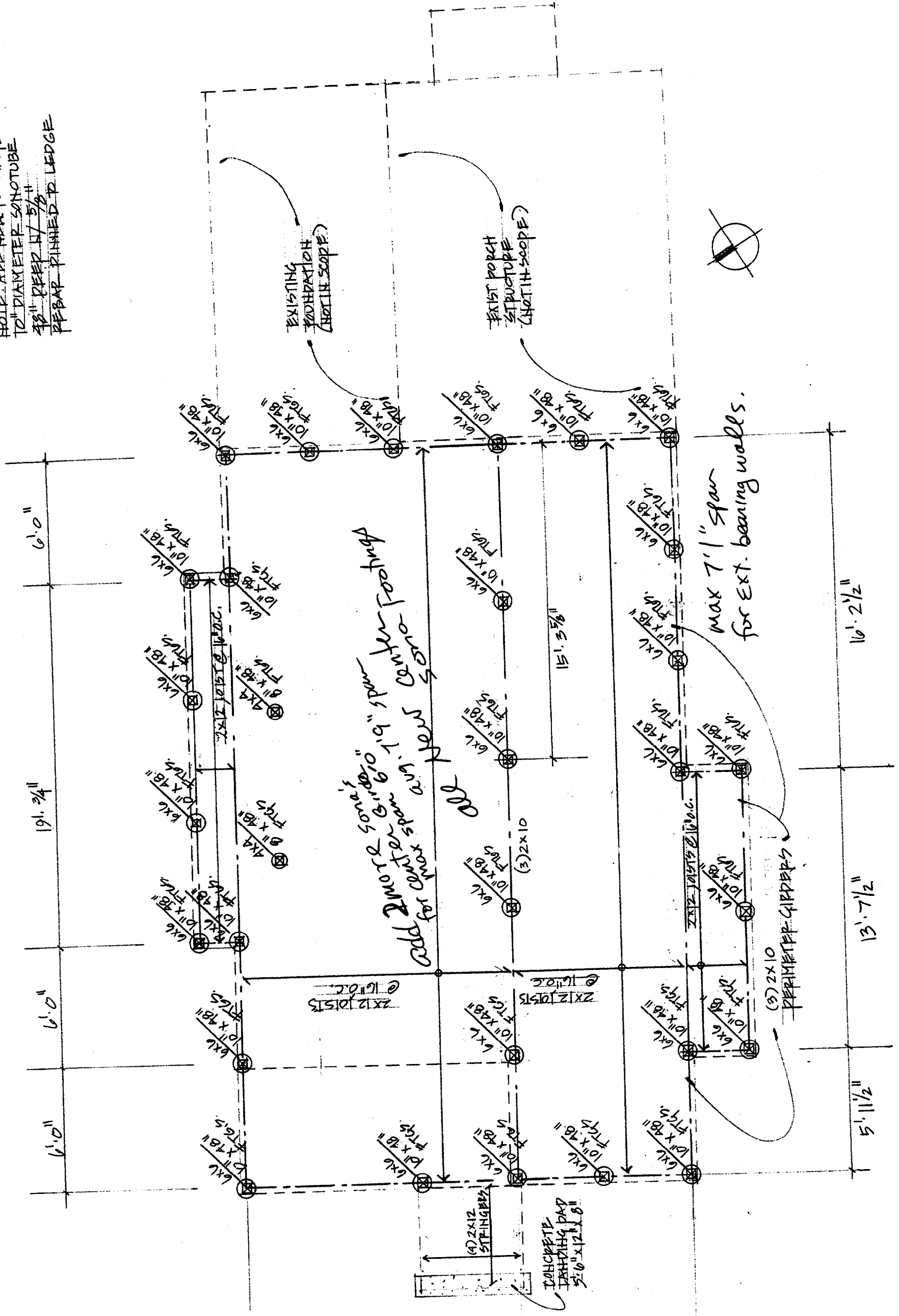
Thompson Johnson
 CROSS SECTION
 1/4" = 1'-0"

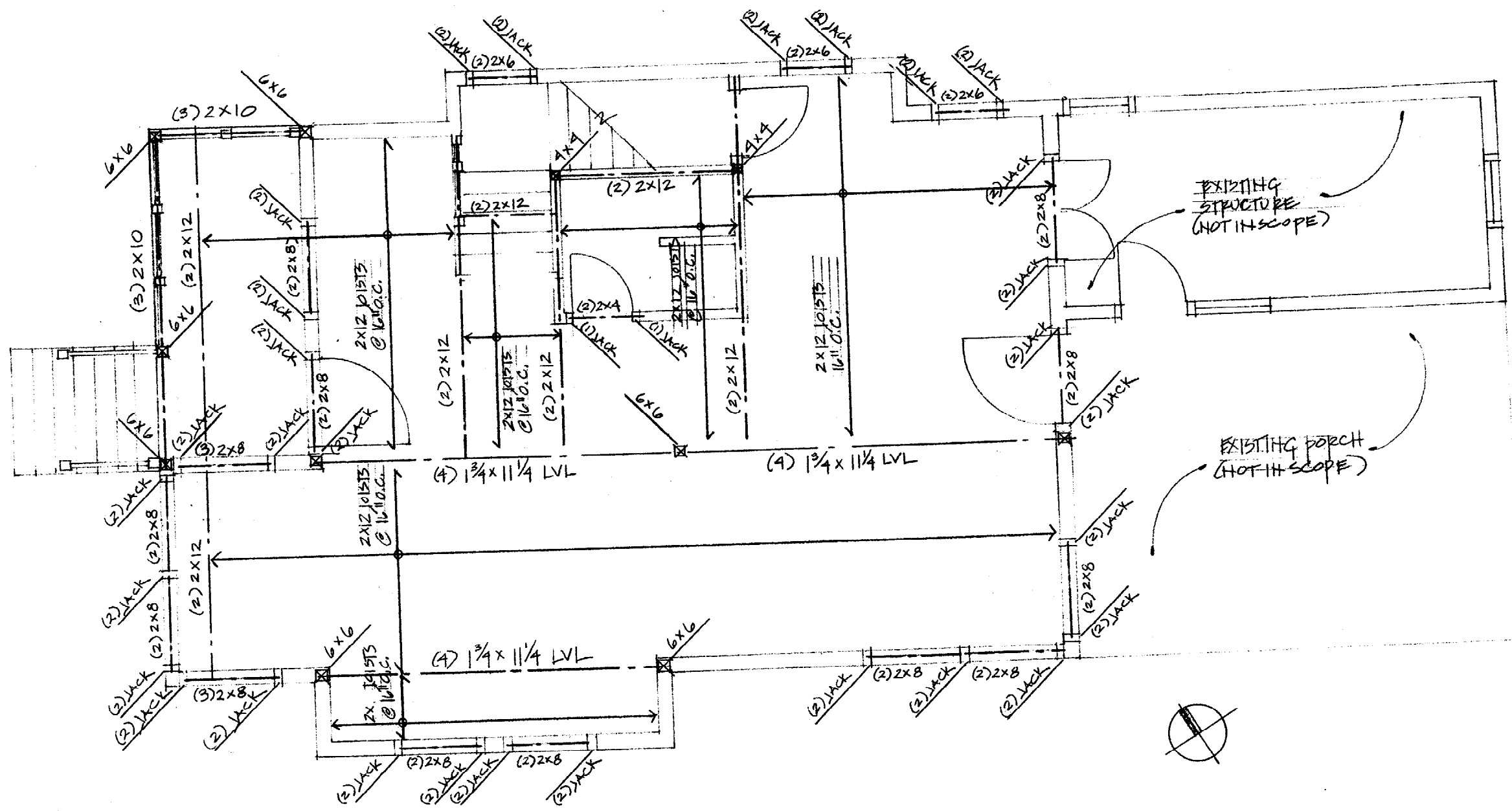


THOMPSON JOHNSON
 LONGITUDINAL SECTION
 $1/4'' = 1'-0''$
 (X)

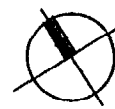
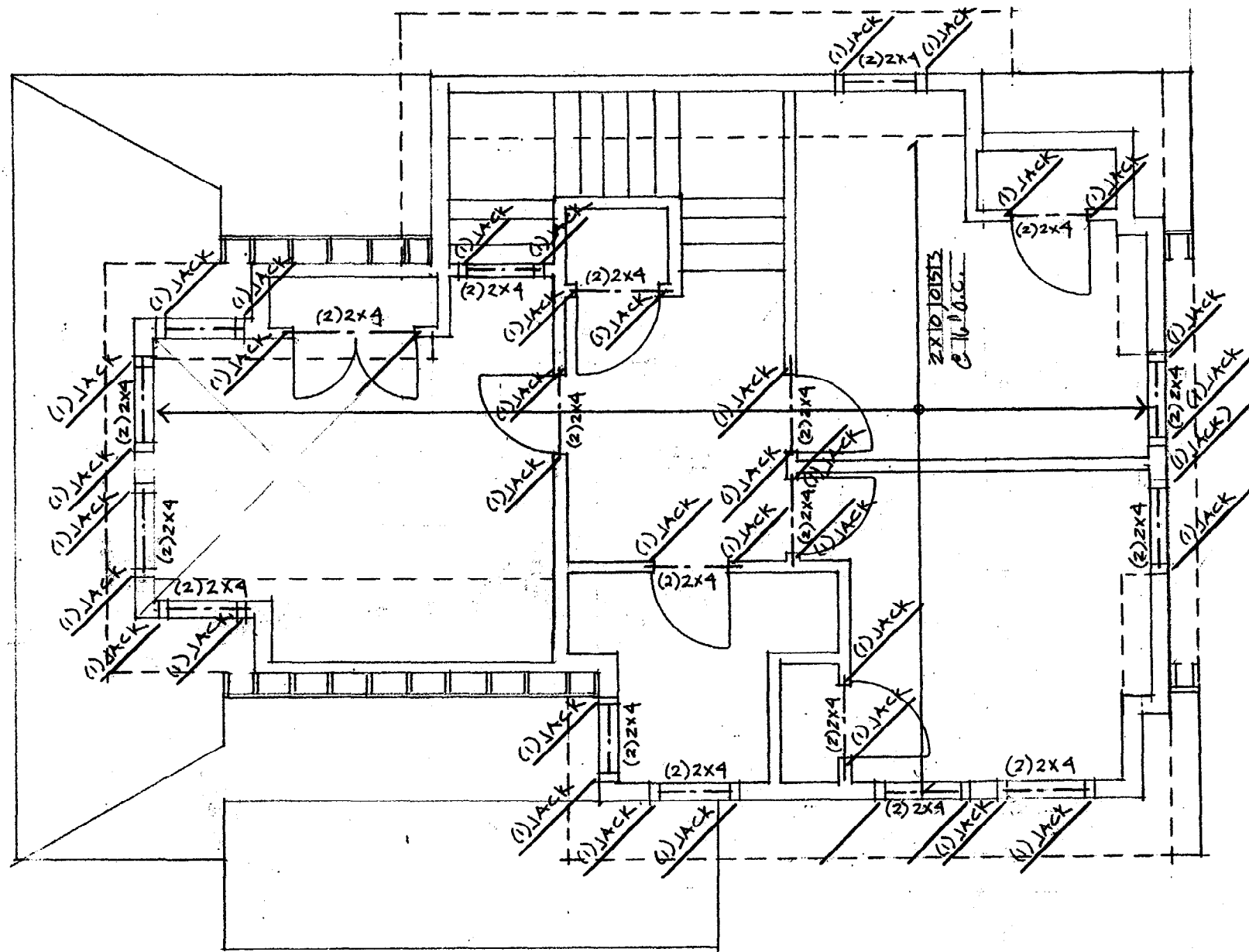
VARIOUS LOCATIONS

NOTE: ALL NEW FOOTINGS - VARIOUS LOCATIONS
 10" DIAMETER SNOTUBE
 #3 REBAR W/ 5/8"
 REBAR PINNED TO LEDGE

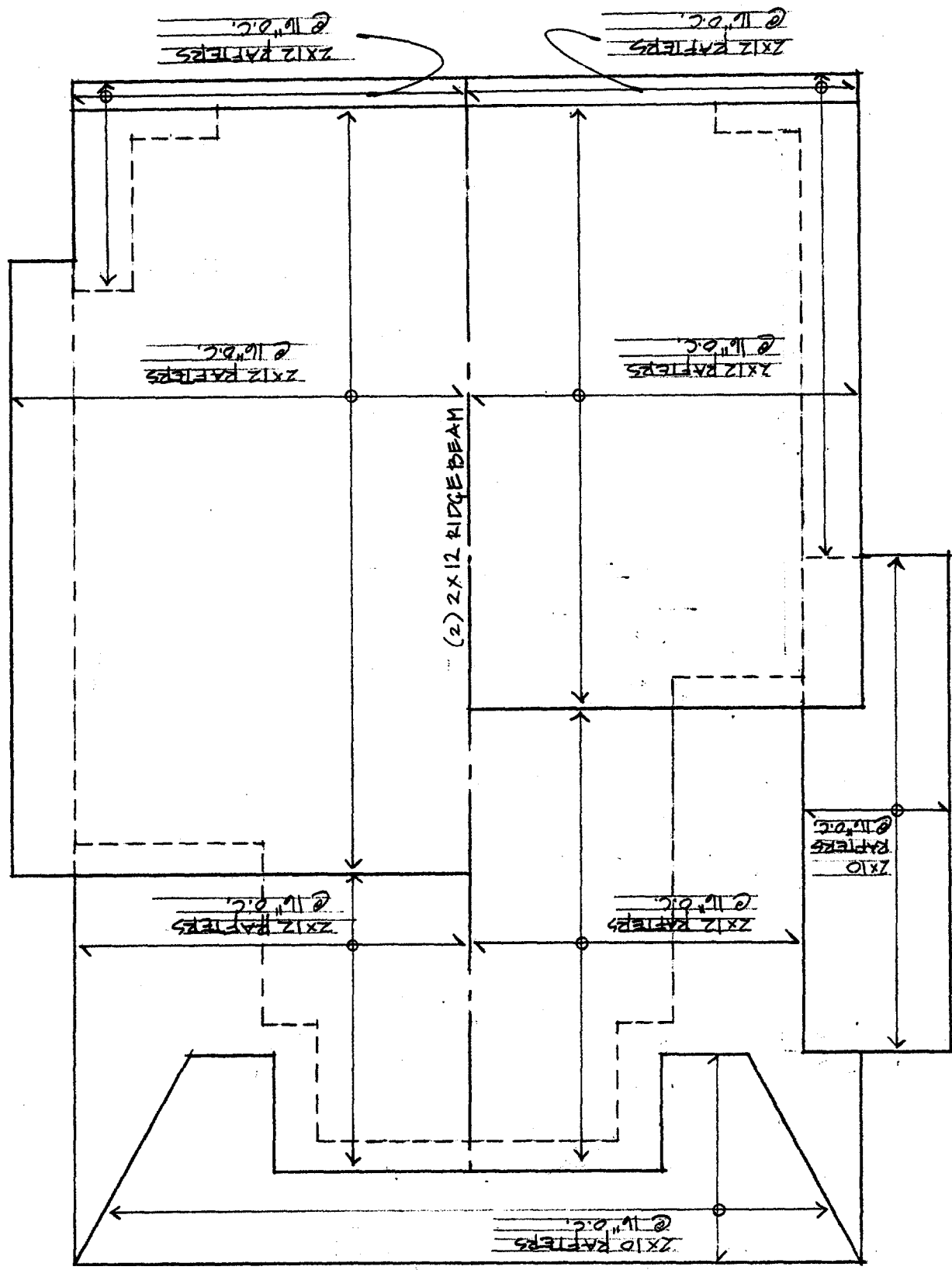




(A) THOMPSON JOHNSON
 SECOND FLOOR FRAMING
 1/4" = 1'-0"



(A) THOMPSON JOHNSON
 SECOND FLOOR CEILING
 FRAMING
 1/4" = 1'-0"



THOMPSON JOHNSON
 ROOF FRAMING
 1/4" = 1'-0"



9 Adams St.

Typical stair
Detail

