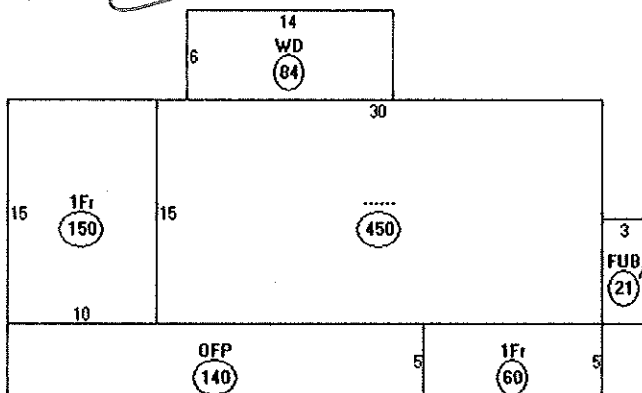


IR-2



Descriptor/Area	Area
A:.....	450 sqft
B: 1Fr	150
C: WD	84
D: FUB	21
E: 1Fr	60
F: OFF	140
140	
905 sqft	
current	
→ 23.1%	

14-145.11(d) $3913 \text{ sqft} \times 20\% = 782.6 \text{ sqft}$

14-145.11(c)

$8 \times 10 = 80 \text{ sqft}$

F = 25' min - ? Not dimensioned $\approx 14'$

$\frac{905}{985} = 25.2\%$

R = 10' min - 10' + indicated

S = 15' min - 5' given

boreterry@aol.com