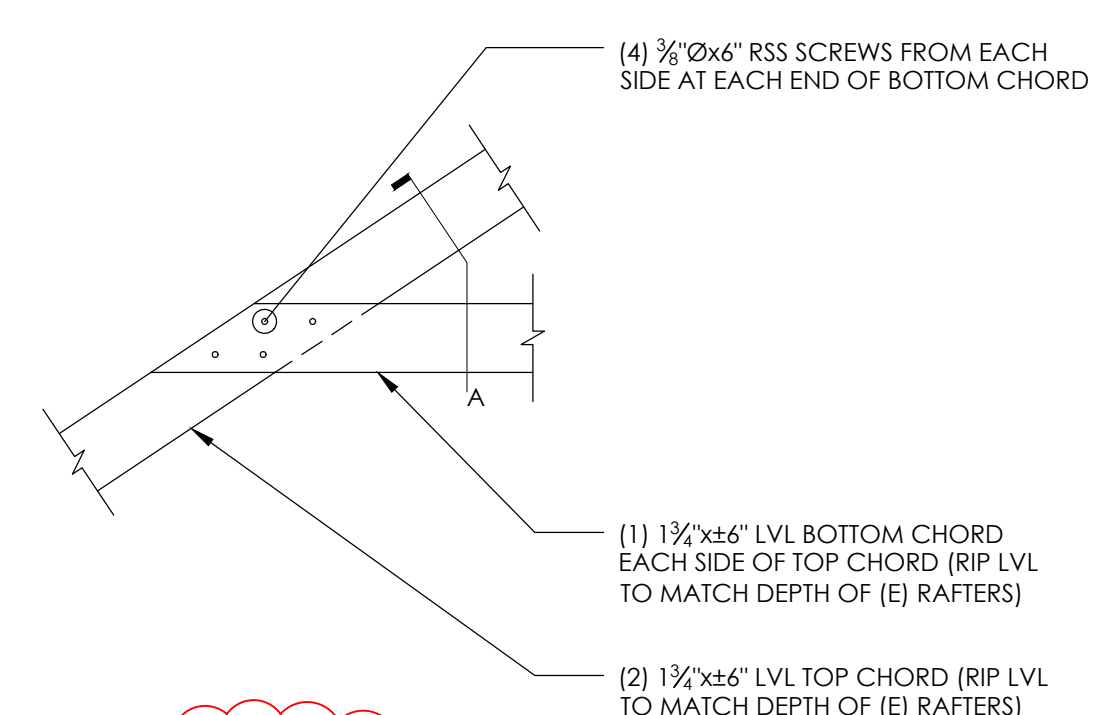
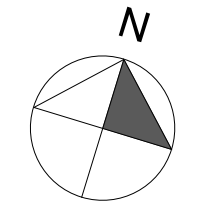
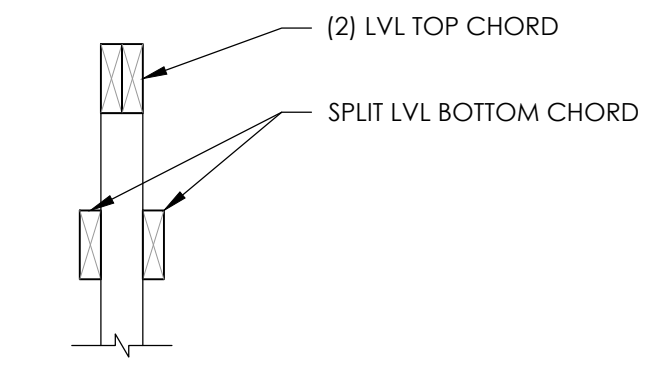
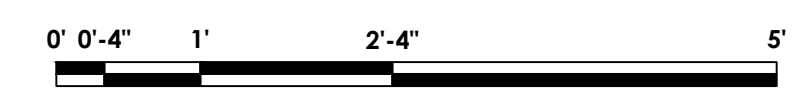


2 ROOF PLAN
 Scale: 1/4" = 1'-0"



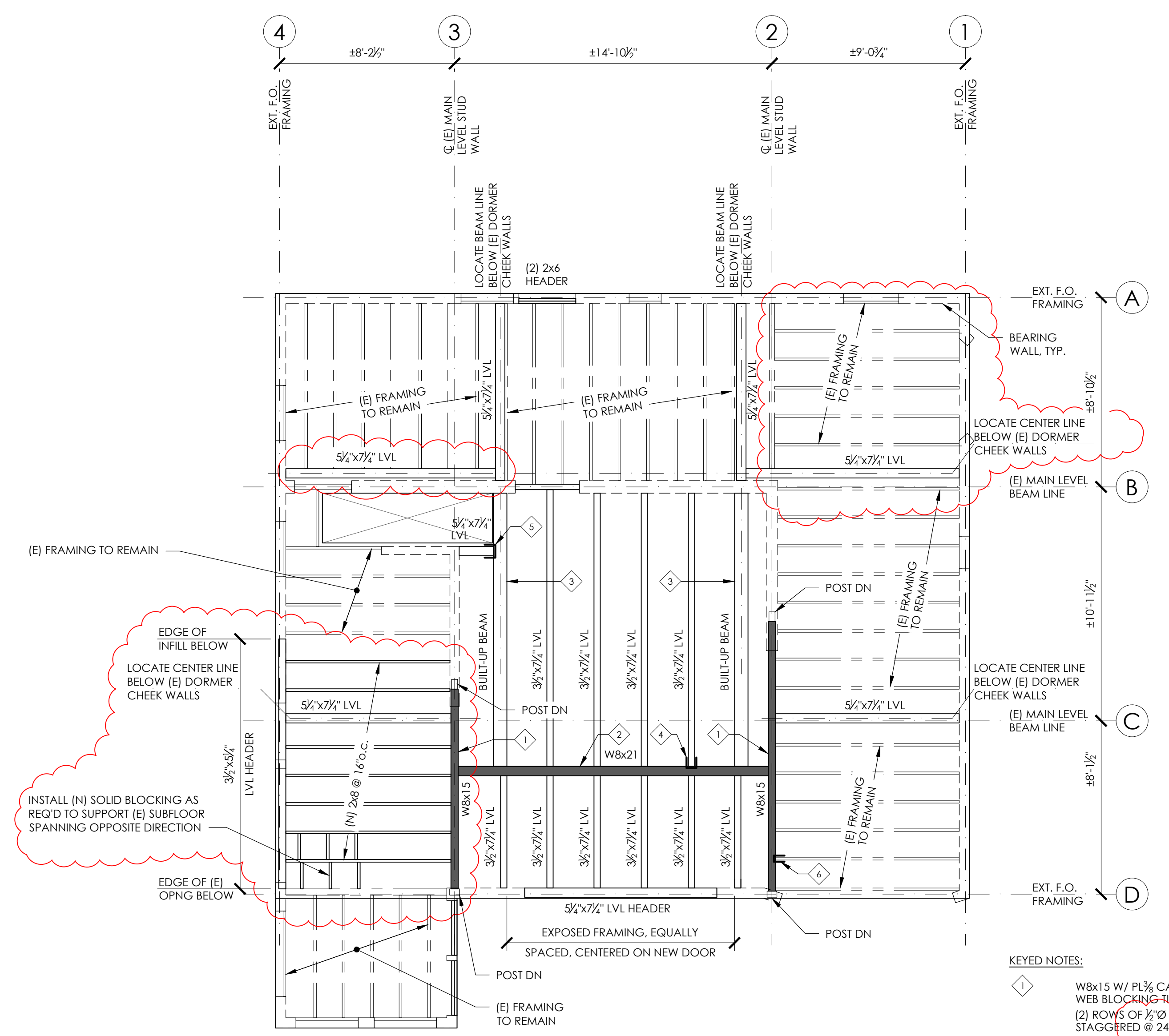
3 TRUSS ELEVATION
 Scale: 3/4" = 1'-0"



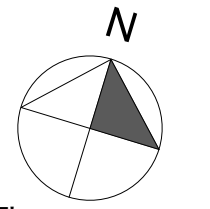
SECTION A

- PLAN NOTES:**
1. INSTALL NEW 2x4 STUDS @ 24" o.c. AND UNDER EACH EXISTING RAFTER AT ALL EXISTING CHEEK WALLS. NEW STUDS MAY BE POSITIONED ON THE FLAT.
 2. --- INDICATES NEW COLLAR TIES (7 TOTAL, MIN., SEE KEYED NOTE 5). EACH COLLAR TIE TO CONSIST OF (2) 2x6, (1) SISTERED TO EA. SIDE OF AN EXISTING COMMON RAFTER. BOTTOM OF COLLAR TIE @ 7'-10" MAX. ABOVE FLOOR.

- KEYED NOTES:**
1. 1 1/2"x7 1/2" LVL HEADER OVER DOORS.
 2. 2x6 HEADER OVER EAVE ACCESS HATCHES.
 3. (2) 2x6 HEADER AT ALL UPPER LEVEL WINDOWS.
 4. 1 1/2"x7 1/2" LVL HEADER AT NEW CLOSET OPENINGS. SPIKE TO FACE OF EXISTING CHEEK WALL FRAMING. IF NO FRAMING EXISTS AT END OF NEW LVL FOR ATTACHMENT, INSTALL 2x4 JACK STUD.
 5. COLLAR TIE AT BACK DORMER. INSTALL AT LEAST THIS ONE COLLAR TIE IN ADDITION THE TRUSS. IF SPACING ALLOWS, INSTALL A SECOND COLLAR TIE AS WELL.



1 UPPER LEVEL FRAMING PLAN
 Scale: 1/4" = 1'-0"



- KEYED NOTES:**
1. W8x15 W/ PL 3/4" CAP EACH END. INSTALL SOLID WEB BLOCKING - 18" HIGH TO BOTTOM FLANGE W/ (2) ROWS OF 1/2" Ø BOLTS IN 3/4" Ø HOLES STAGGERED @ 24" o.c. AND WITHIN 12" OF EACH END. SUPPORT W8 ON 3 1/2" x 5 1/2" LVL POST EACH END. 3 1/2" MIN. BEARING. (2) 1/2" Ø LAG SCREWS THROUGH 1/2" Ø HOLES INTO POST END GRAIN. GC TO EXPOSE EXISTING FRAMING CONDITIONS AT EACH BEARING POINT AND NOTIFY ENGINEER AND ARCHITECT FOR COMPLETE CONNECTION DETAILING.
 2. W8x21 WITH WEB BLOCKING PER NOTE 1.
 3. BUILT-UP BEAMS: (8) 1 1/2" x 7 1/2" LVL. ALT. AT CONTRACTOR'S OPTION: (4) 1 1/2" x 7 1/2" LVL W/ PL 1/2" x 7 1/2" FLITCH AT CENTER OF ASSEMBLY W/ 1/2" Ø BOLTS STAGGERED @ 24" o.c. AND MIN. (2) EACH END WITHIN 6" OF BEARING.
 4. HANG 3 1/2" WIDE MEMBERS W/ SIMPSON HU48, TYP.
 5. HANG 3 1/2" WIDE MEMBERS W/ SIMPSON HGUSS.50-8, TYP.
 6. HANG (E) 2x MEMBERS W/ SIMPSON U26R, TYP.

