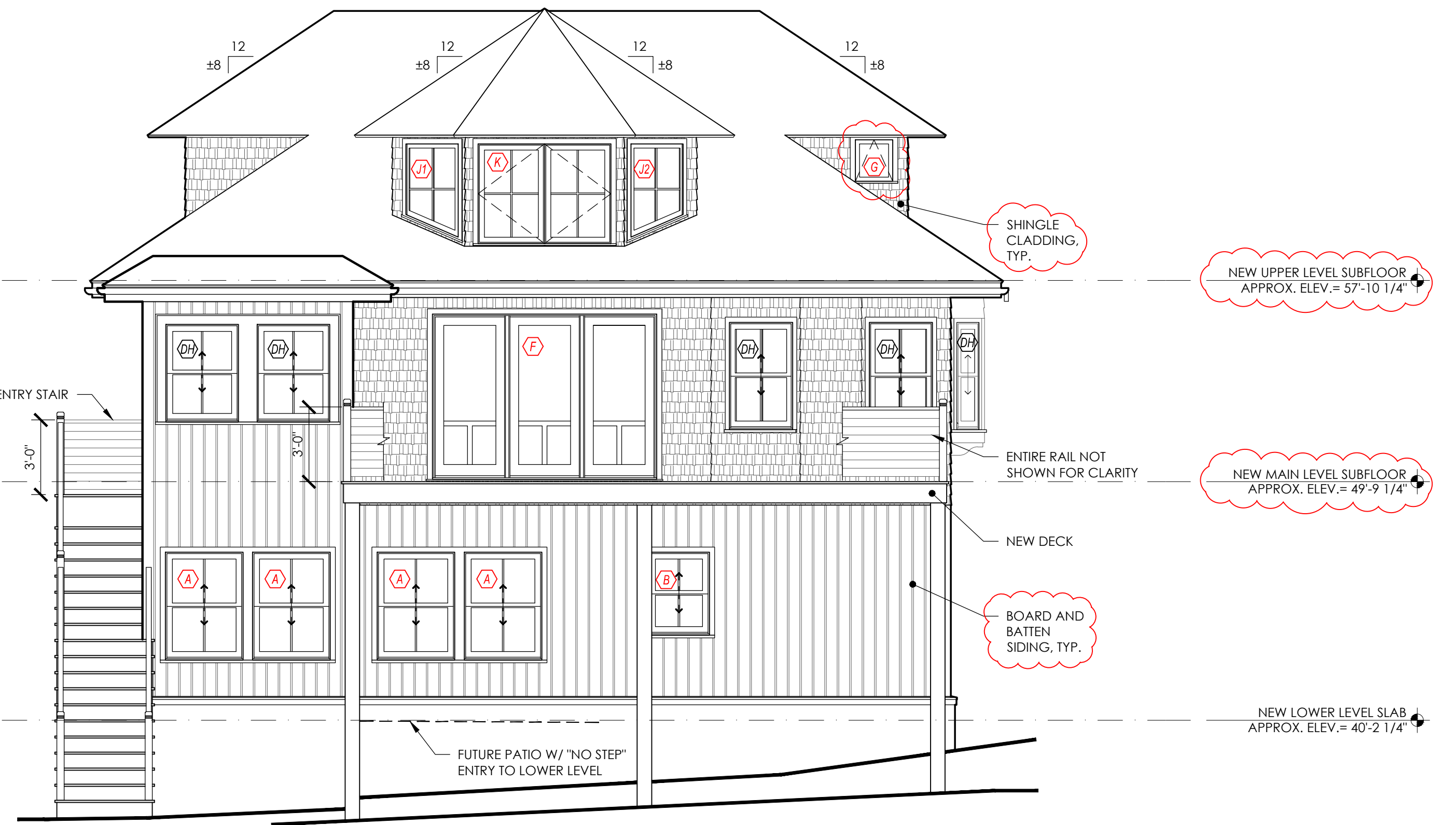




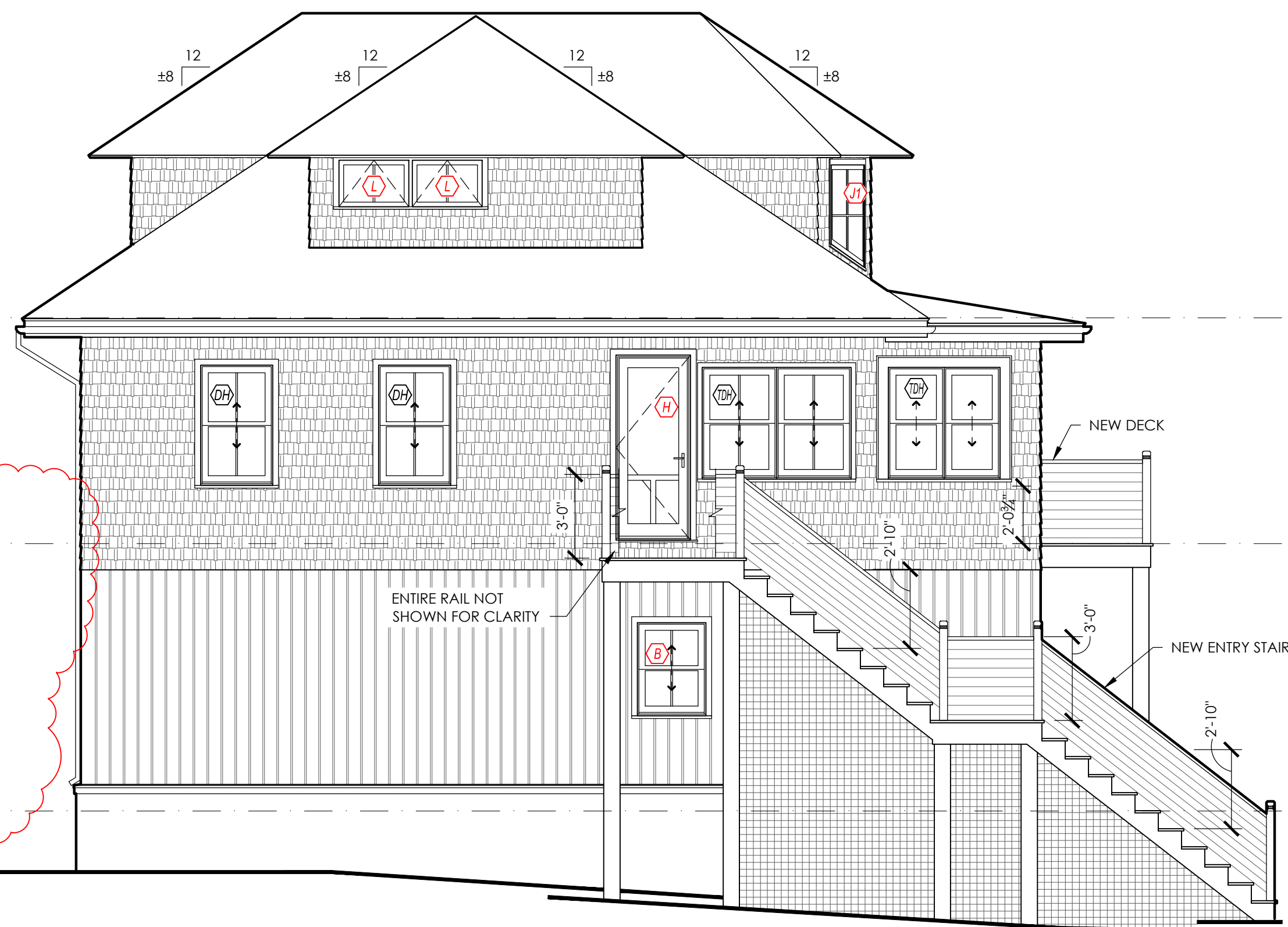
2 NORTH ELEVATION
Scale: 1/4" = 1'-0"



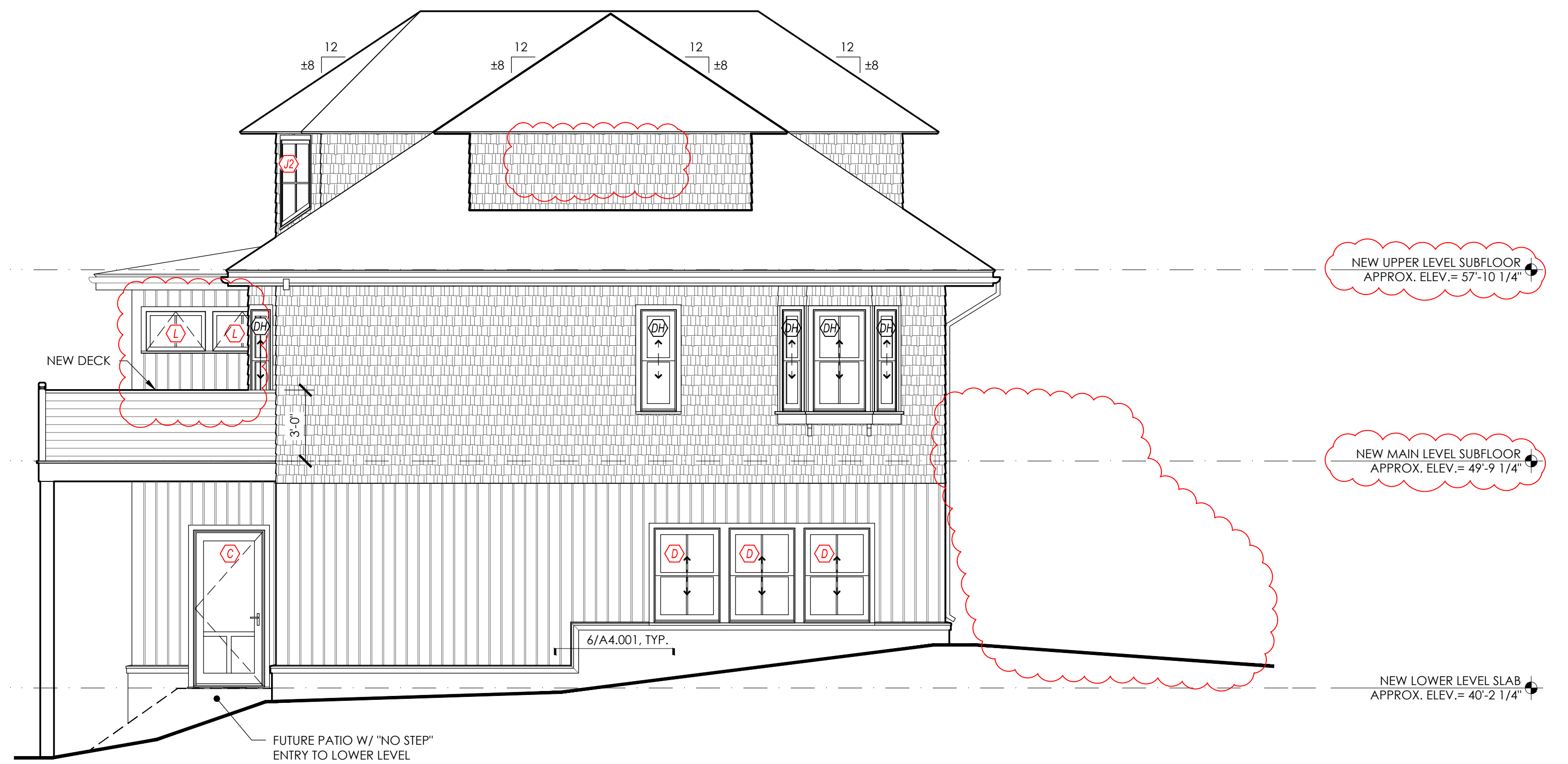
1 SOUTH ELEVATION
Scale: 1/4" = 1'-0"

ELEVATION GENERAL SCOPE NOTES:

1. DEMOLISH EXISTING CHIMNEY, FULL HEIGHT OF HOUSE.
2. DEMOLISH EXISTING SHINGLE CLADDING, NEW CLADDING AS SHOWN.
3. LOWER LEVEL WALLS AND UPPER LEVEL DORMERS TO BE CLAD BOARD AND BATTEN SIDING.
4. EXTERIOR DECK AND STAIR WALKING SURFACES TO BE IPE (VERIFY PER BUDGET).
5. EXTERIOR RAIL SYSTEMS TO BE CEDAR 4x4 POSTS AND CABLE RAILS.



4 WEST ELEVATION
Scale: 1/4" = 1'-0"



3 EAST ELEVATION
Scale: 1/4" = 1'-0"

