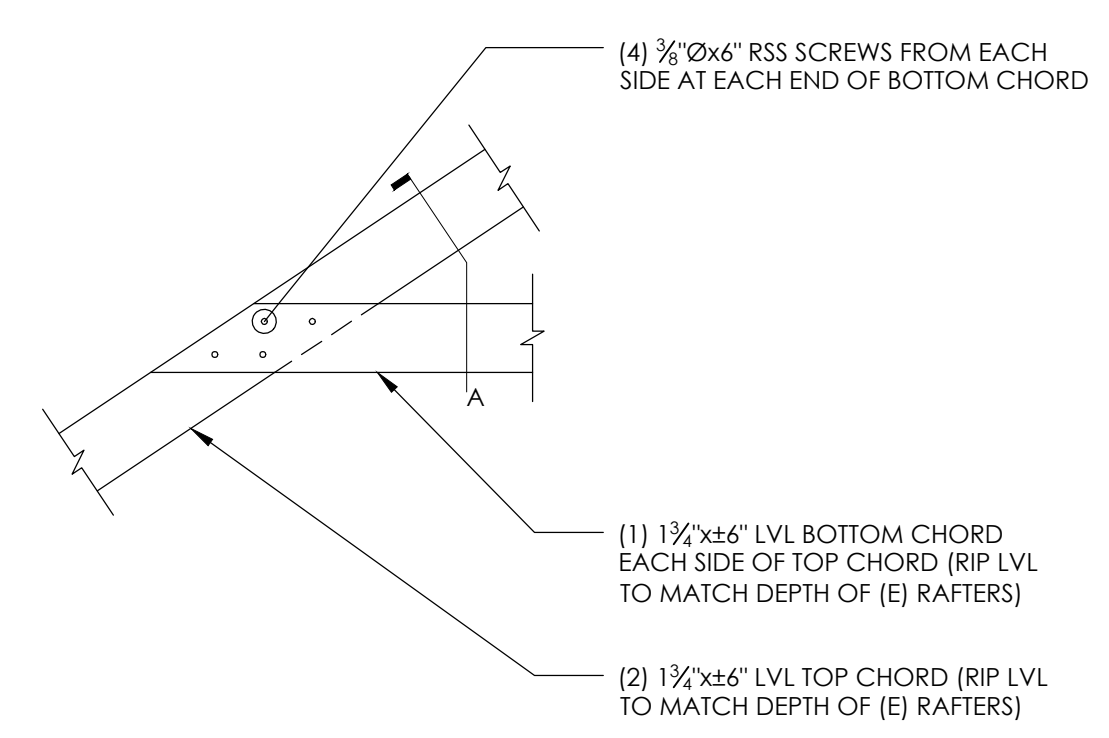
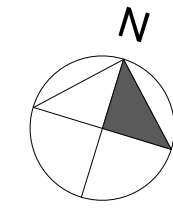


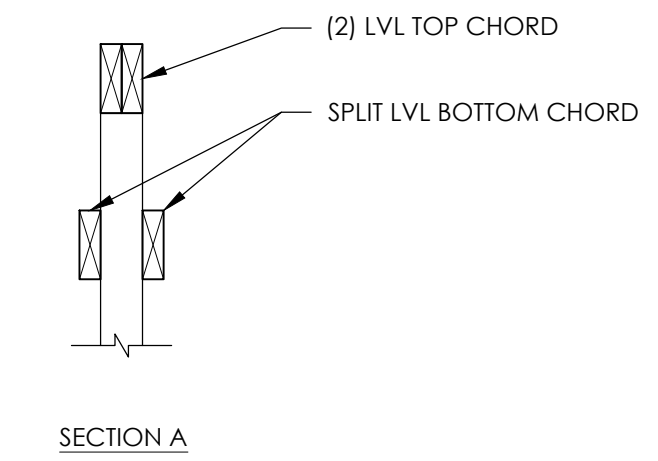
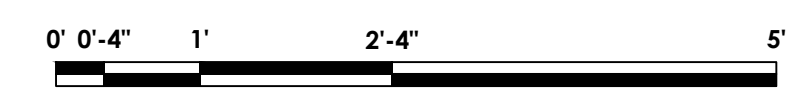
NOTE: ALL EXISTING ROOF FRAMING TO REMAIN.

2 ROOF PLAN
Scale: 1/4" = 1'-0"

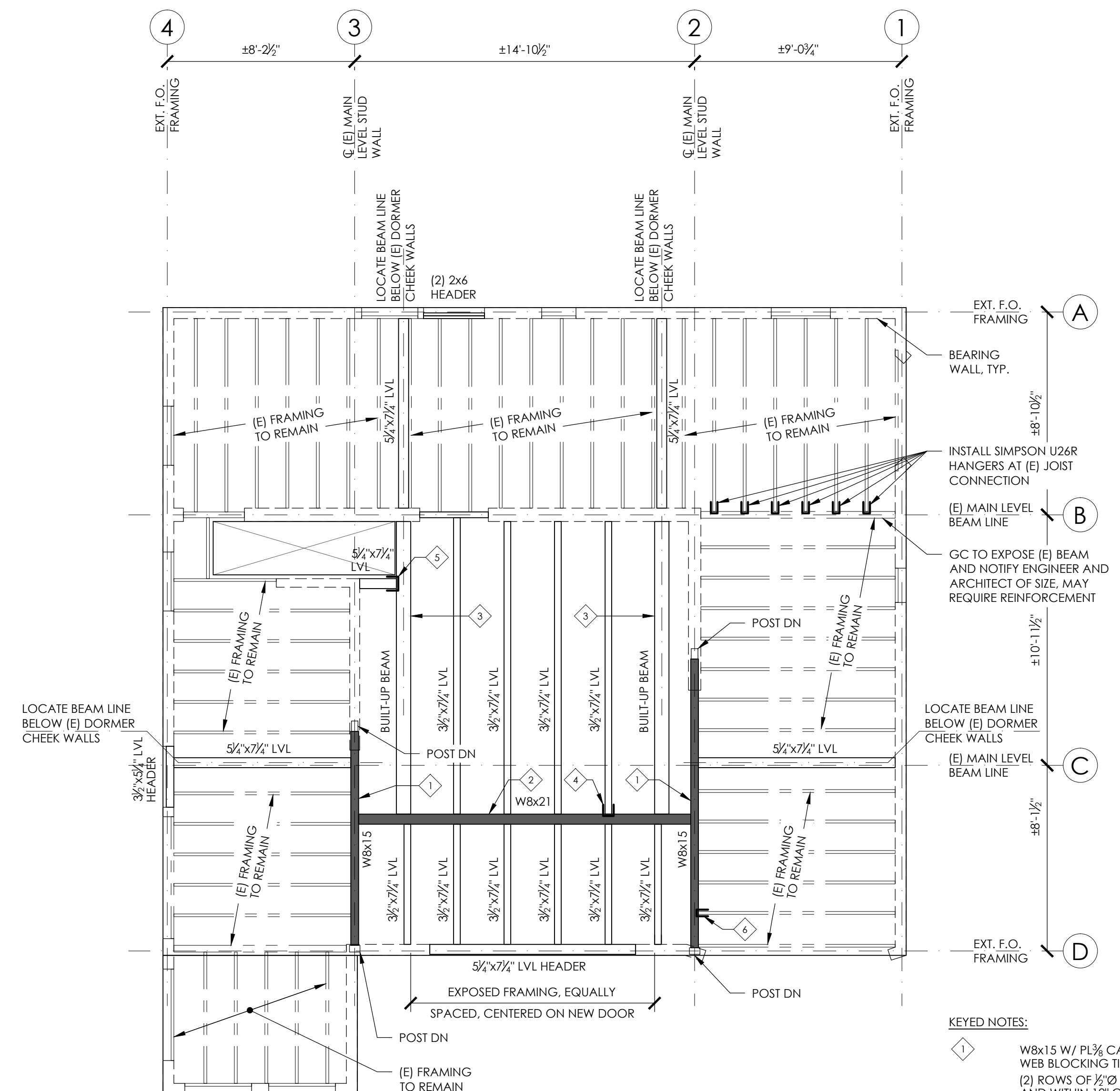


NOTES:
1. SUPPORT TRUSS AT EACH END ON (3) 2x4.
2. LOCATE TRUSS AS CLOSE TO HIP INTERSECTION AS POSSIBLE WITHOUT REMOVING (E) RAFTERS.

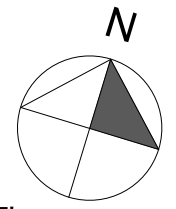
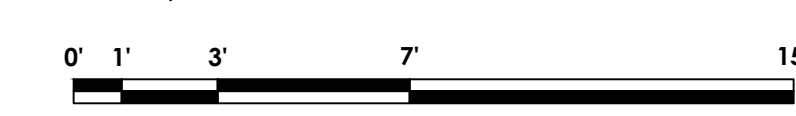
3 TRUSS ELEVATION
Scale: 3/4" = 1'-0"



- KEYED NOTES:**
- 1 (2) 2x8 HEADER OVER POCKET DOORS.
 - 2 (2) 2x6 HEADER OVER EAVE ACCESS HATCHES.
 - 3 (2) 2x6 HEADER AT NEW UPPER LEVEL WINDOWS.
 - 4 3/2 x 5/2 LVL HEADER AT NEW CLOSET OPENINGS.



1 UPPER LEVEL FRAMING PLAN
Scale: 1/4" = 1'-0"



- KEYED NOTES:**
- 1 W8x15 W/ PL 3/4 CAP EACH END. INSTALL SOLID WEB BLOCKING TIGHT TO BOTTOM FLANGE W/ (2) ROWS OF 1/2" BOLTS STAGGERED @ 24" o.c. AND WITHIN 12" OF EACH END. SUPPORT W8 ON 3/2 x 5/2 LVL POST EACH END. 3/2" MIN. BEARING. (2) 1/2" x 4" LAG SCREWS THROUGH 1/2" HOLES INTO POST END GRAIN. GC TO EXPOSE EXISTING FRAMING CONDITIONS AT EACH BEARING POINT AND NOTIFY ENGINEER AND ARCHITECT FOR COMPLETE CONNECTION DETAILING.
 - 2 W8x21 WITH WEB BLOCKING PER NOTE 1.
 - 3 BUILT-UP BEAMS: (8) 1 1/2 x 7 LVL. ALT. AT CONTRACTOR'S OPTION: (4) 1 1/2 x 7 LVL W/ PL 1/2 x 7/8 FLITCH AT CENTER OF ASSEMBLY W/ 1/2" BOLTS STAGGERED @ 24" o.c. AND MIN. (2) EACH END WITHIN 6" OF BEARING.
 - 4 HANG 3/2" WIDE MEMBERS W/ SIMPSON HU48, TYP.
 - 5 HANG 3/4" WIDE MEMBERS W/ SIMPSON HGUSS.50-8.
 - 6 HANG (E) 2x MEMBERS W/ SIMPSON U26R, TYP.