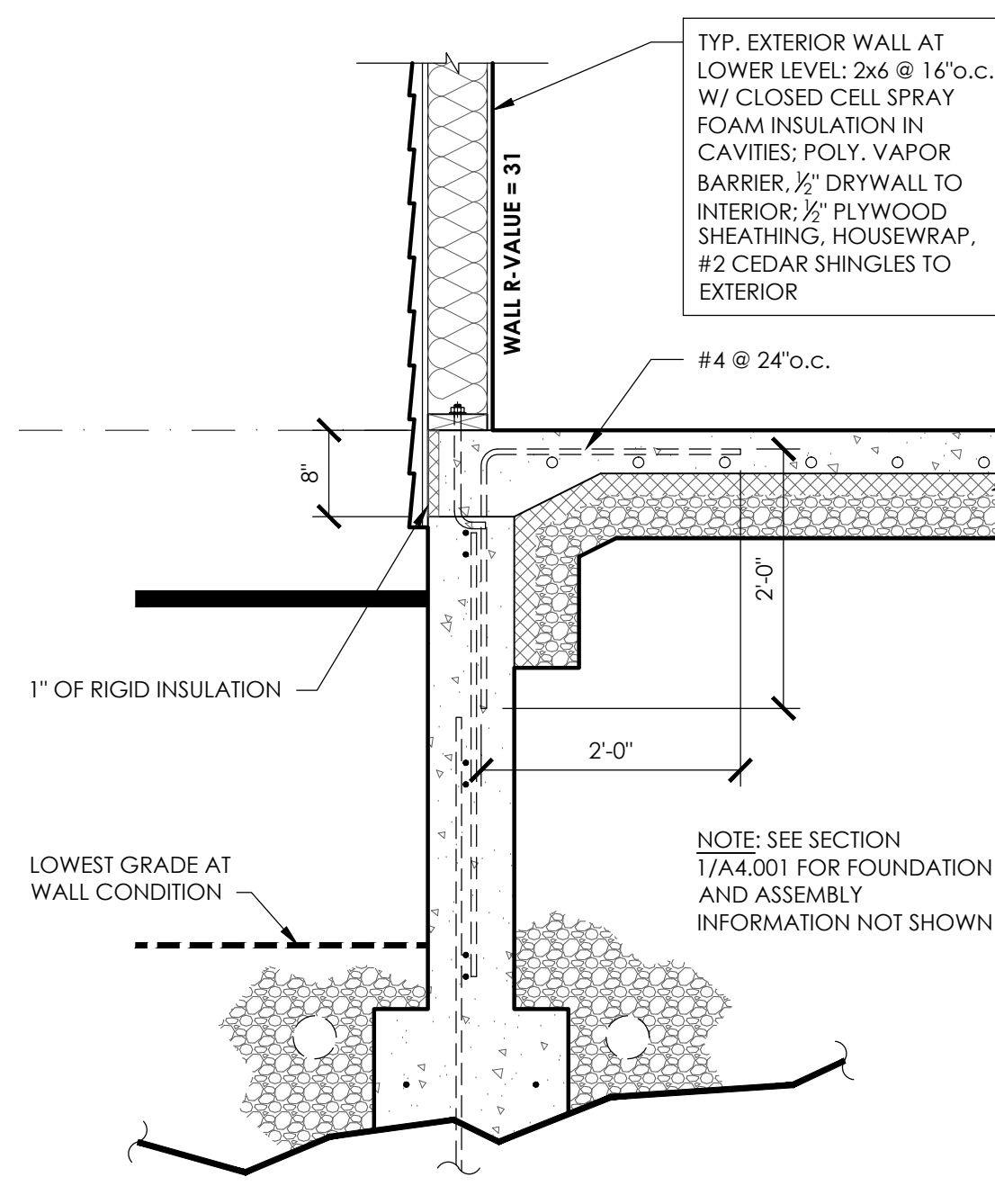
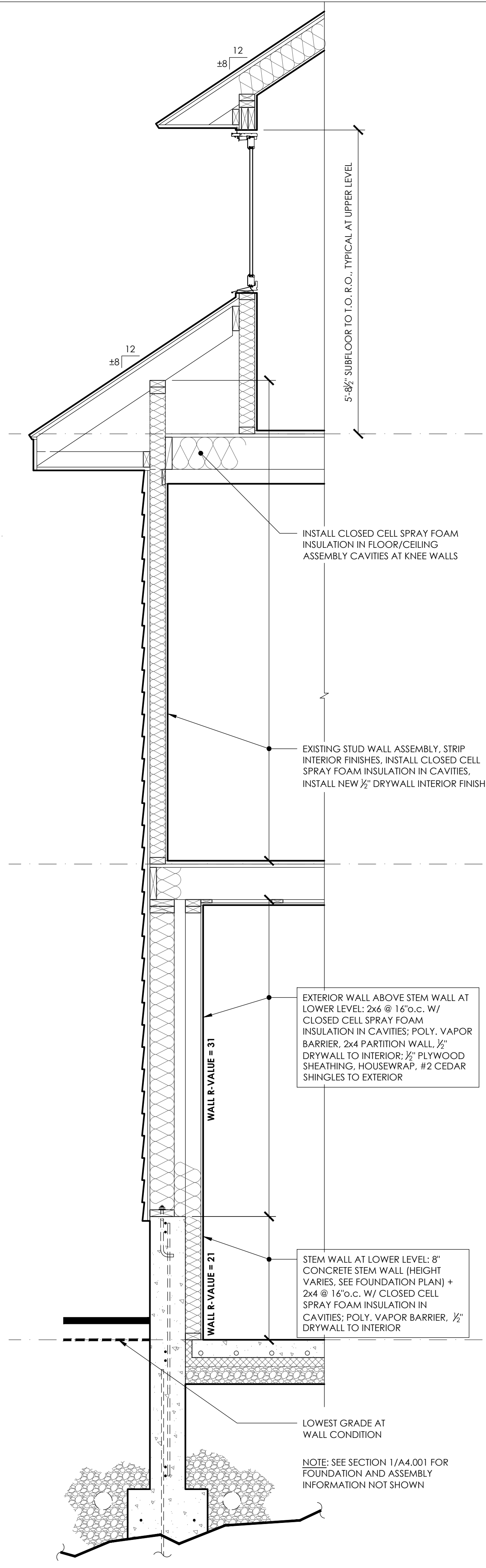


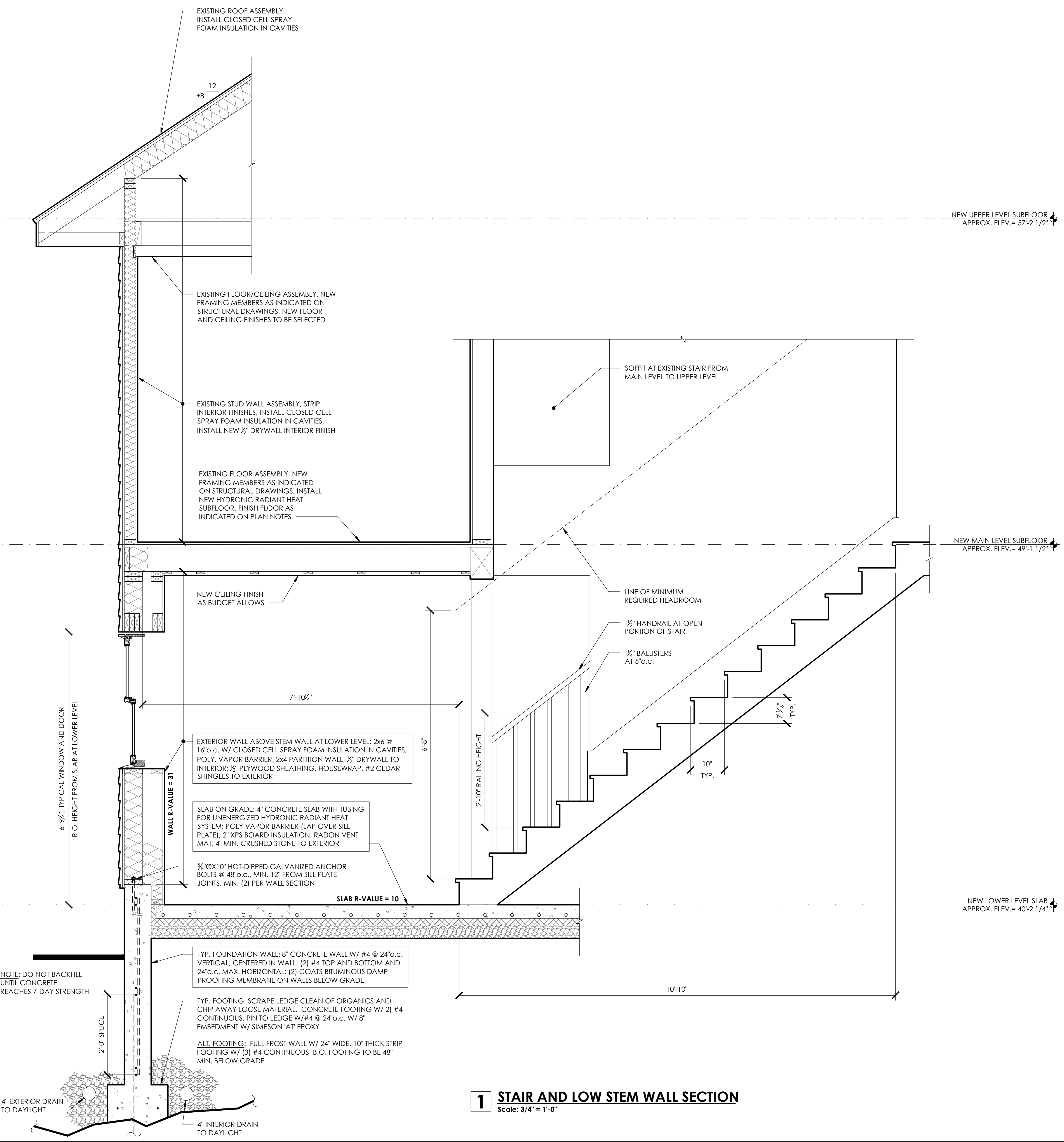
**3 STUD WALL SECTION**  
 Scale: 3/4" = 1'-0"



**4 STUD WALL SECTION AT SOUTH WALL**  
 Scale: 3/4" = 1'-0"



**2 WALL SECTION AT STEM WALL**  
 Scale: 3/4" = 1'-0"



**1 STAIR AND LOW STEM WALL SECTION**  
 Scale: 3/4" = 1'-0"