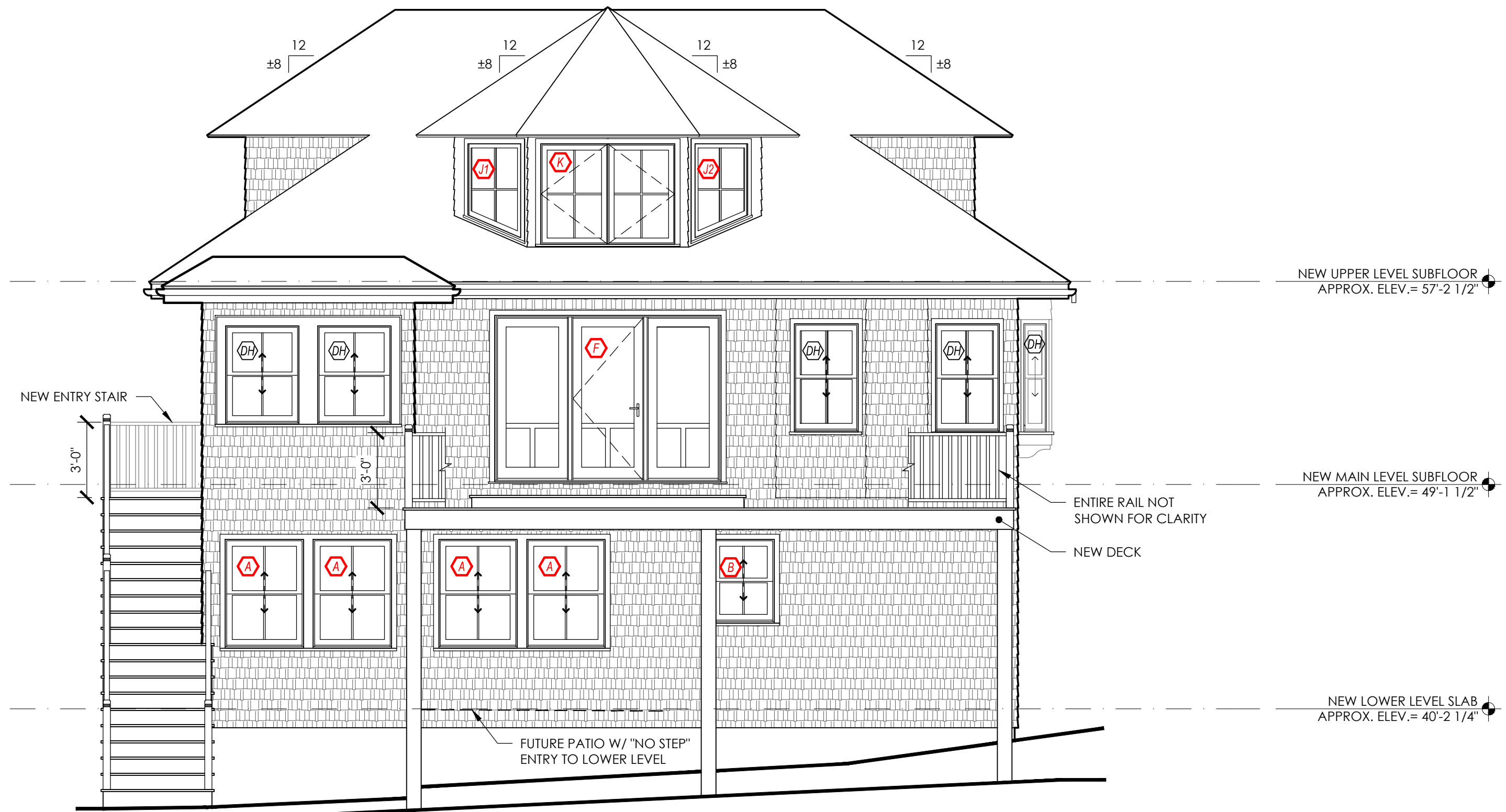
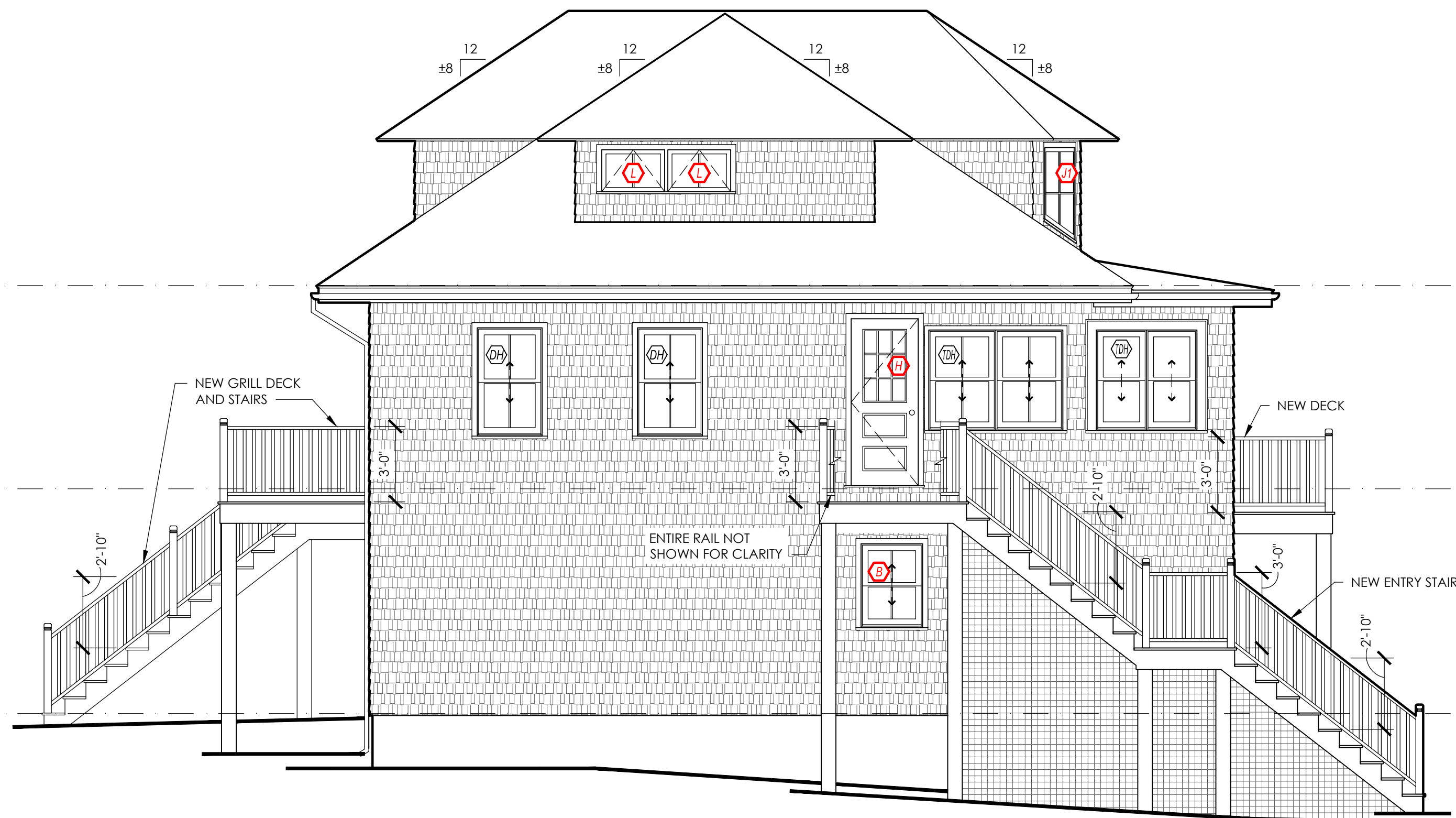


2 NORTH ELEVATION
Scale: 1/4" = 1'-0"

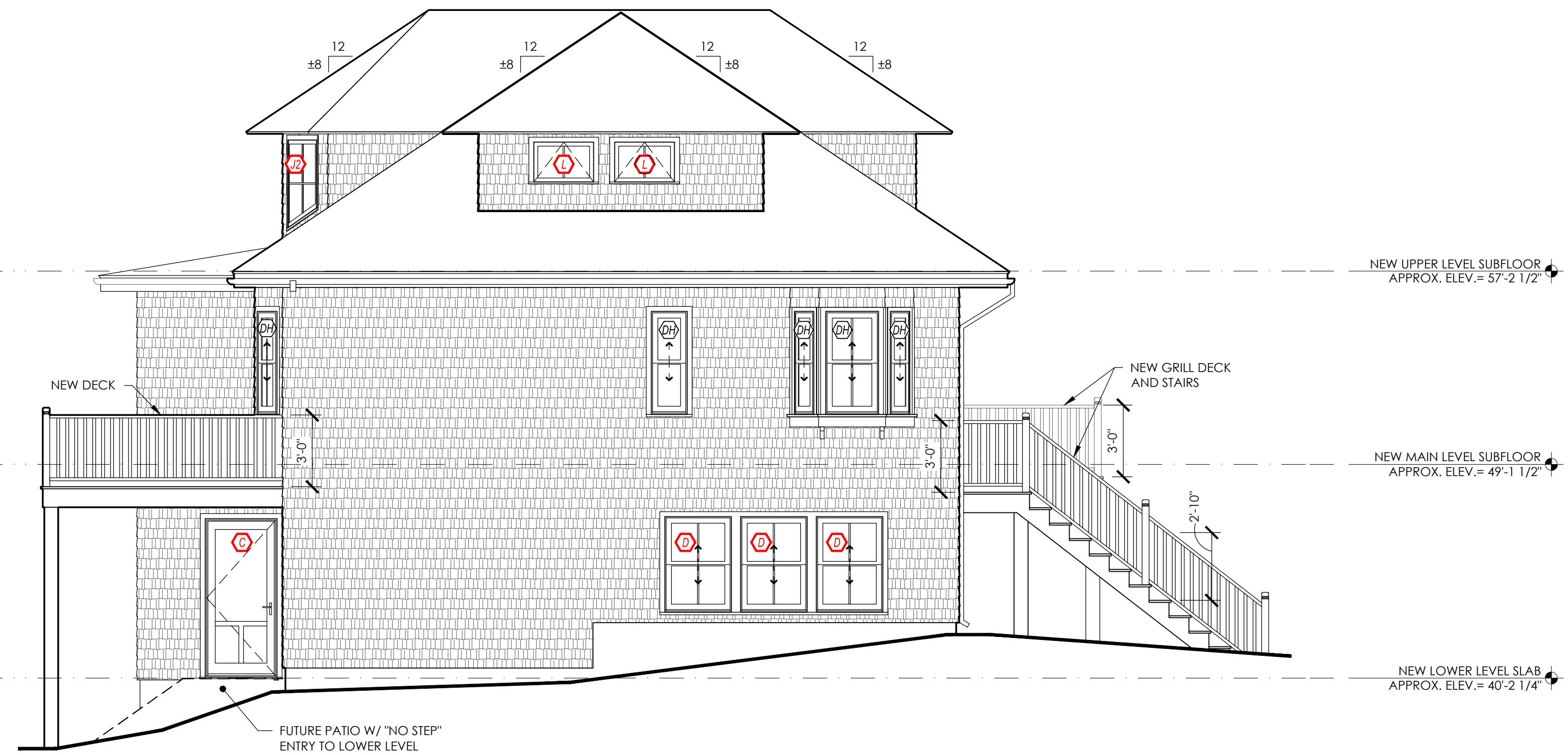


1 SOUTH ELEVATION
Scale: 1/4" = 1'-0"

ELEVATION GENERAL SCOPE NOTES:
 1. DEMOLISH EXISTING CHIMNEY, FULL HEIGHT OF HOUSE.
 2. PATCH AND REPAIR EXISTING CLADDING WHEREVER PRACTICABLE.
 3. EXTERIOR DECK AND STAIR WALKING SURFACES TO BE IPE (VERIFY PER BUDGET).
 4. EXTERIOR RAIL SYSTEMS TO BE CEDAR 4x4 POSTS WITH CEDAR RAILS AND CEDAR 1 1/2" BALUSTERS.



4 WEST ELEVATION
Scale: 1/4" = 1'-0"



3 EAST ELEVATION
Scale: 1/4" = 1'-0"