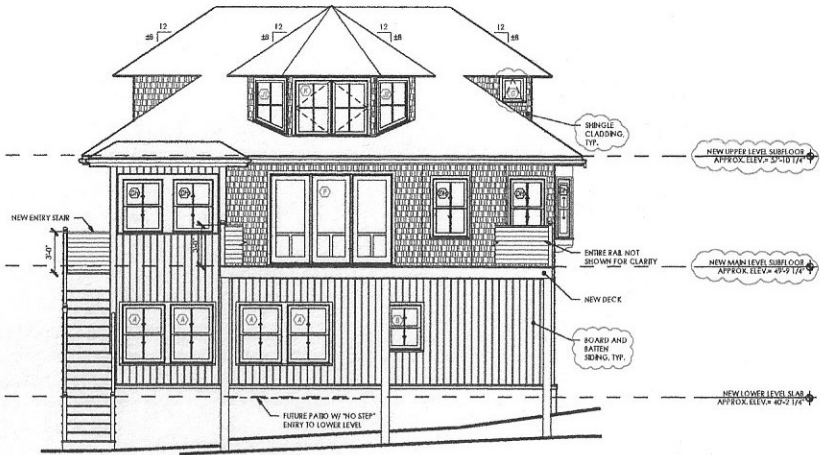
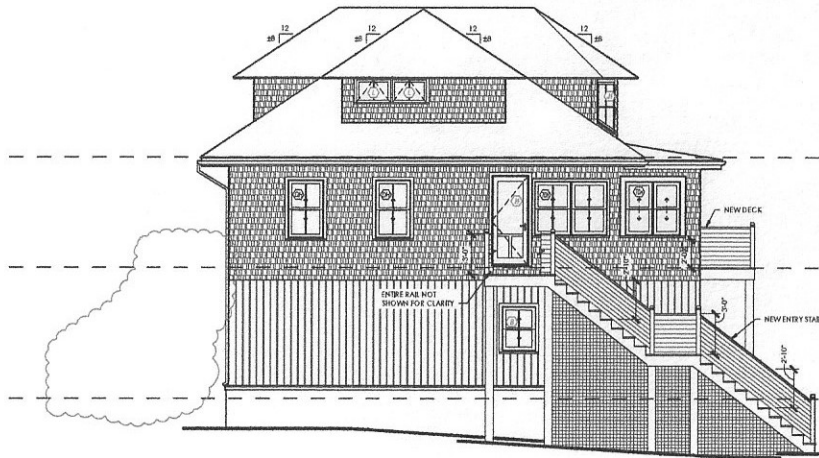


2 NORTH ELEVATION
Scale: 1/4" = 1'-0"

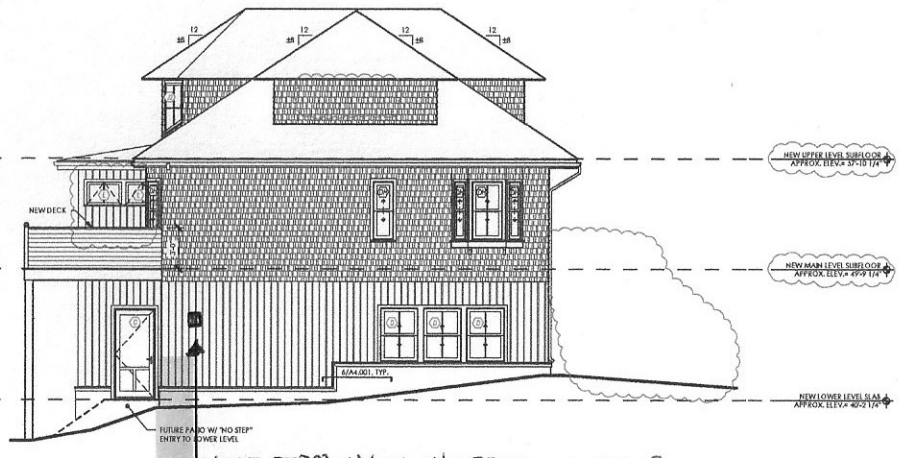


1 SOUTH ELEVATION
Scale: 1/4" = 1'-0"

ELEVATION GENERAL SCOPE NOTES:
 1. DEMOLISH EXISTING CHIMNEY, FULL HEIGHT OF HOUSE.
 2. DEMOLISH EXISTING SINGLE CLADDING, NEW CLADDING AS SHOWN.
 3. LOWER LEVEL WALLS AND UPPER LEVEL DOORMEN TO BE CLAD BOARD AND BATTEN SIDING.
 4. EXTERIOR DECK AND STAIR WALKING SURFACES TO BE IPE HEBBY PER BUDGET.
 5. EXTERIOR RAB SYSTEMS TO BE CEDAR 4x4 POSTS AND CABLE RABS.



4 WEST ELEVATION
Scale: 1/4" = 1'-0"



3 EAST ELEVATION
Scale: 1/4" = 1'-0"

