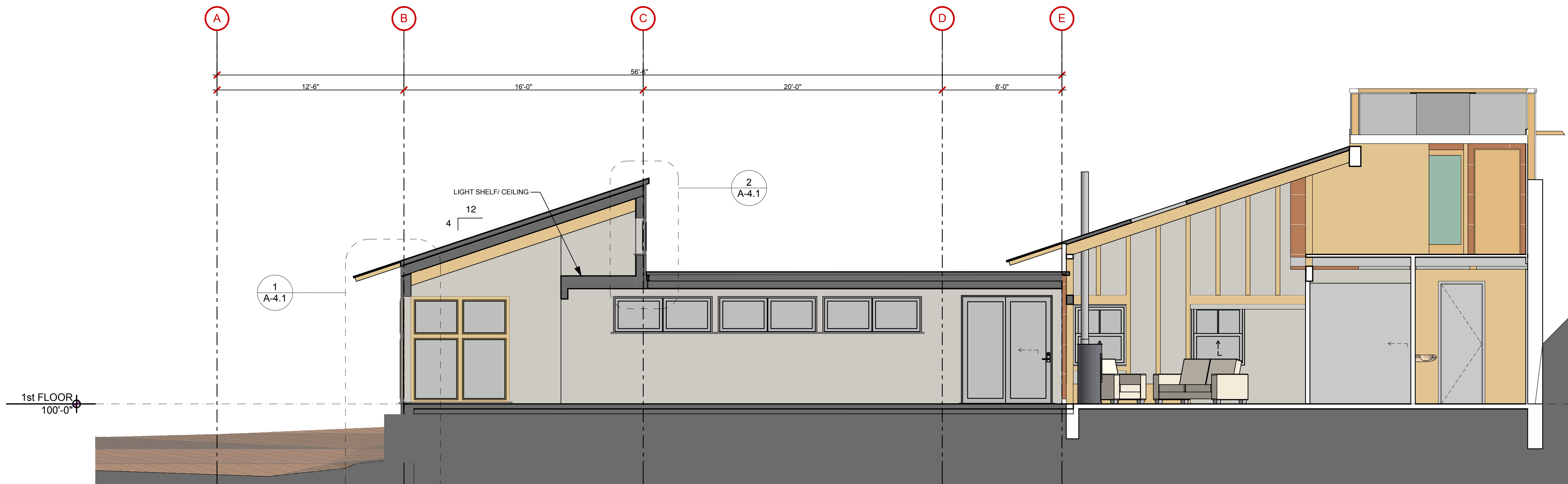
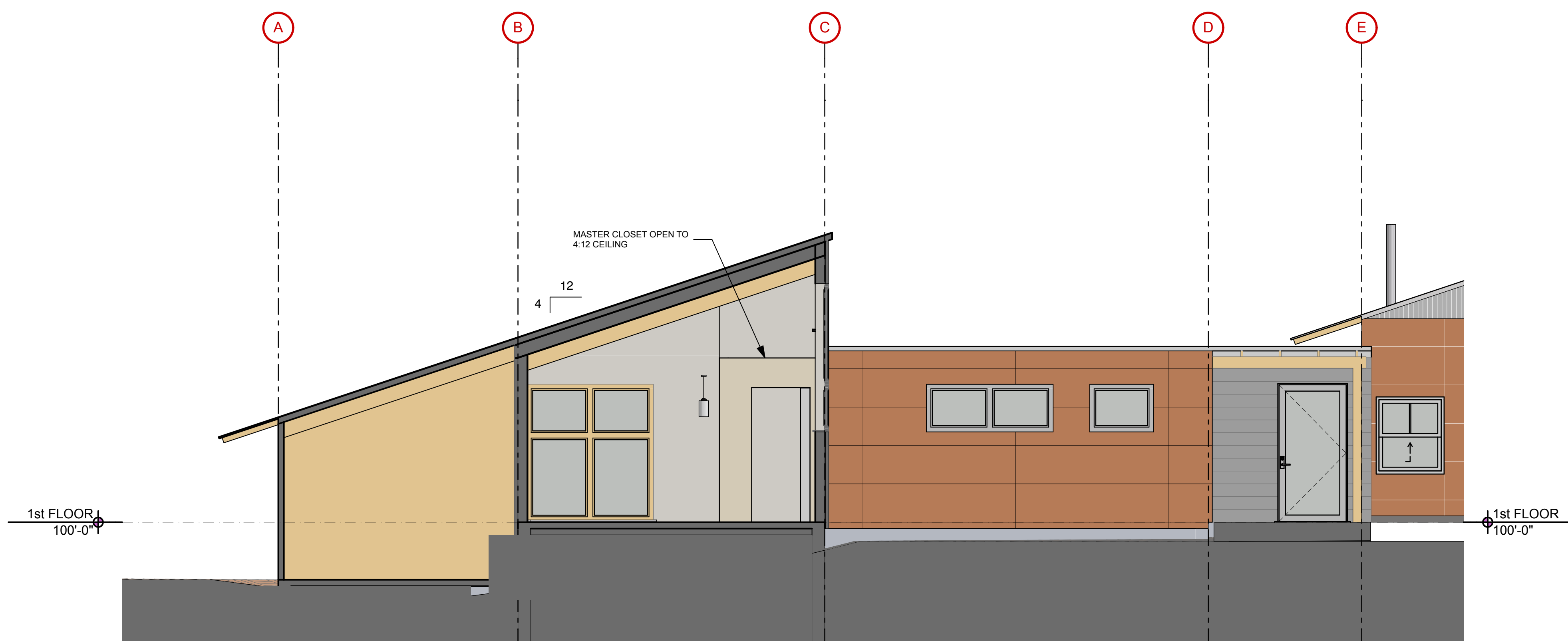


ASSEMBLY NOTES

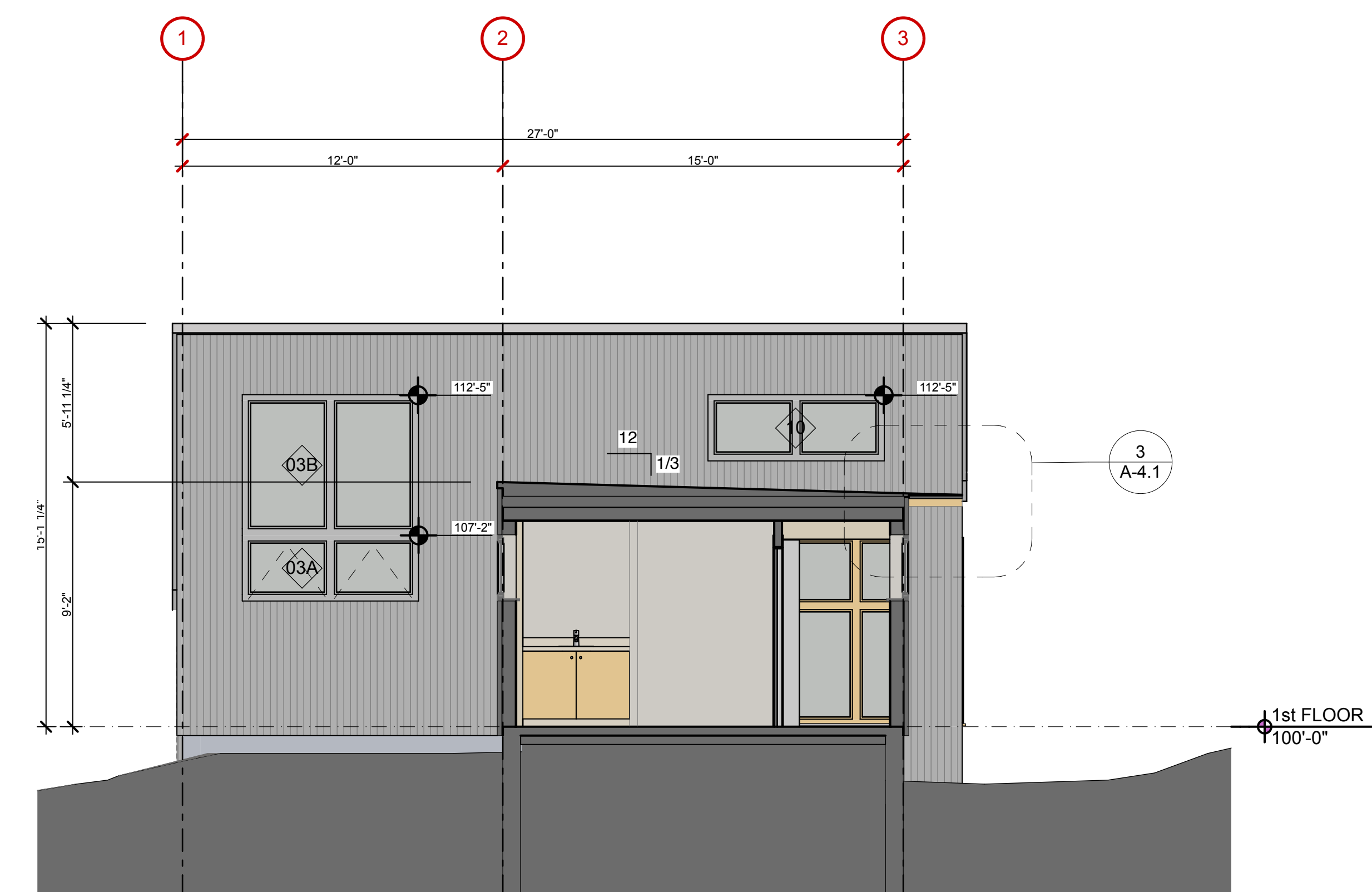
- (A) **PITCHED ROOFS: ~R-50.4**
Standing Seam Metal Roof, On 5/8" Sheathing, On 1x Cross Strapping, On 1x Strapping Run With Slope, On Grace Ice & Water Shield, On 5/8" Plywood Sheathing (Air Barrier, Taped and Sealed), On TJI's w/ Sistered On 2x4 Cedar Rafter Tails w/ D.P. Cellulose Insulation, On Wood Ceiling w/ Exposed False Rafters (species/spacing TBD), Sealed (Stained? TBD)
- (B) **PITCHED ROOF (@ EAVES):**
Standing Seam Metal Roof, On 5/8" Sheathing, On 1.5" x 2 1/8" Cedar Cross Strapping, On 2x4 Cedar Rafter Tails to Continue 12" Back.
- (C) **LOW-SLOPE ROOF: ~R-51**
EPDM Membrane Roof, On Roofing Underlayment, On Grace Ice & Water Shield HT, On Tapered EPS Rigid Insulation, On 3 1/2" EPS Insulation w/ 2x4 Cedar Rafter Tails Between, On "Zip System Roof Sheathing" w/ Taped Seams (Air Barrier)(See Struct.), On 5.5" Versalam w/ D.P. Cellulose Insulation, On GWB Ceiling.
- (D) **EXTERIOR WALL TYPE 1: ~R-32**
Exterior Siding Type 1: Galvanized Corrugated Metal-Vertical Orientation, 7/8" Profile - Match Existing; On 1x3 K.D. Vertical Strapping Rainscreen, On Weather Resistant Barrier (WRB) (incl. Cora-Vent Or Black Vinyl Bug Screen @ Top and Bottom of Wall incl. above win. heads, and below win. sills), On 2.0" R-13 Foil-Faced Poly-Iso Rigid Insulation, On Zip System Wall Sheathing w/ Taped Seams (Air Barrier), On 2x6 Stud Wall (See Struct.) w/ Full-Depth D.P. Cellulose (R-19), on GWB.
- (E) **EXTERIOR WALL TYPE 2: ~R-32**
Exterior Siding Type 2: 2x4" Nominal 3/16" Cor-Ten Panels (Match Existing incl. A325 Type 3 (CorTen) Bolts w/ 7/8" Head and Type 3 Washers) (See Elevations for Extents), On 1x3 K.D. Vertical Strapping Rainscreen (incl. Cora-Vent Or Black Vinyl Bug Screen @ Top and Bottom of Wall incl. above win. heads, and below win. sills), On Weather Resistant Barrier (WRB), On 2.0" R-13 Foil-Faced Poly-Iso Rigid Insulation, On Zip System Wall Sheathing w/ Taped Seams (Air Barrier), On 2x6 Stud Wall (See Struct.) w/ Full-Depth D.P. Cellulose (R-19), on GWB.
- (F) **CONC. FOUND. WALL: ~R-8**
Free Draining Backfill, On Galvanized Sheet Metal, On 2" Rigid EPS Insulation, On Fluid-Applied Damp-proofing, On Reinforced Concrete Wall (See Struct.)
- (G) **INTERIOR SLAB ON GRADE: ~R-17**
Sealed, Polished, Fiber-Mesh-Reinforced 4" Concrete Slab (See Struct.), On 15 Mil. min. Poly Vapor Barrier Taped and Sealed, On 4" Rigid EPS Insulation, On 6" Crushed Gravel Fill (No Fines)



1 LONG SECTION
NOT TO SCALE



2 MASTER STORAGE SECTION
NOT TO SCALE



3 BATHROOM SECTION
NOT TO SCALE